

SINGOLARE — FERRETTI CUSTOM LINE



Builder: FERRETTI CUSTOM LINE

Year Built: 2018

Model: Motor Yacht

Price: PRICE ON APPLICATION

Location: Greece

LOA: 121' 7" (37.04mm)

Beam: 26.24

Max Draft: 7' 6" (2.27mm)

Cruise Speed: 12 Knots Kts. (14 MPH)

Max Speed: 15.5 Knots Kts. (18 MPH)

Our experienced yacht broker, Andrey Shestakov, will help you choose and buy a yacht that best suits your needs **SINGOLARE — FERRETTI CUSTOM LINE** from **our catalogue**. Presently, at **Shestakov Yacht Sales Inc.**, we have a wide variety of yachts available on **our sale's list**. We also work in close contact with all the big **yacht manufacturers** from all over the world.

If you would like to buy a yacht **SINGOLARE — FERRETTI CUSTOM LINE** or would like help answering any questions concerning purchasing, selling or chartering a yacht, please call **+1(954)274-4435**

TABLE OF CONTENTS

TABLE OF CONTENTS	2
SPECIFICATIONS	4
Basic Information	4
Dimensions	4
Speed, Capacities and Weight	4
Accommodations	4
Hull and Deck Information	5
Engine Information	5
PHOTOS	6
2	6
4	6
5	6
6	6
7	6
8	7
9	7
10	7
11	7
12	7
13	7
14	8
15	8
16	8
17	8
18	8
19	8
20	9
21	9

24	9
26	9
27	9
28	9
29	10
30	10
31	10
32	10
Capture	10
Capture0	10
Capture1	11
Capture2	11
Capture5	11
Capture4	11
CONTACTS	12
Contact details	12
Telephones	12
Office hours	12
Address	12

SPECIFICATIONS

Basic Information

Category: Motor Yacht

Sub Category: Semi-Displacement

Model Year: 2018

Year Built: 2018

Country: Greece

Dimensions

LOA: 121' 7" (37.04mm)

LWL: 100' 8" (30.66mm)

Beam: 26.24

Max Draft: 7' 6" (2.27mm)

Speed, Capacities and Weight

Cruise Speed: 12 Knots Kts. (14 MPH) **Cruise Speed Range:** 2300

Max Speed: 15.5 Knots Kts. (18 MPH) **Max Speed Range:** 1200 Kts.

Gross Tonnage: 289 Pounds

Water Capacity: 3200 Gallons

Fuel Capacity: 7898.74 Gal Gallons

Accommodations

Total Cabins: 5

Total Berths: 8

Sleeps: 11

Total Heads: 6

Crew Cabin: 7

Crew Berths: 7

Crew Heads: 4

Hull and Deck Information

Hull Material: GRP

Deck Material: Teak

Hull Configuration: Semi-Displacement **Hull Color:** white

Exterior Designer: Zuccon
International Project

Interior Designer: Paola Galeazzi

Engine Information

Engines: 2

Manufacturer: MAN

Engine Type: Inboard

Fuel Type: Diesel

PHOTOS

2



4



5



6



7



8



9



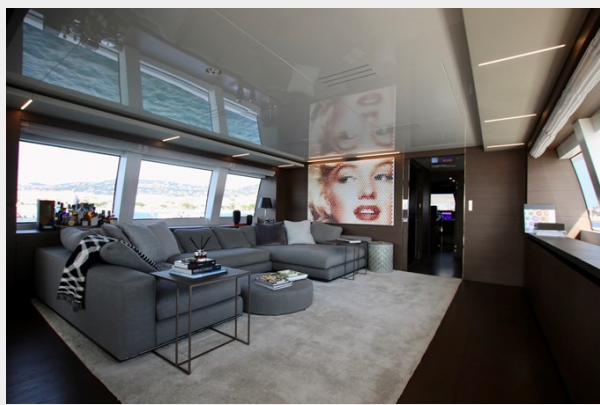
10



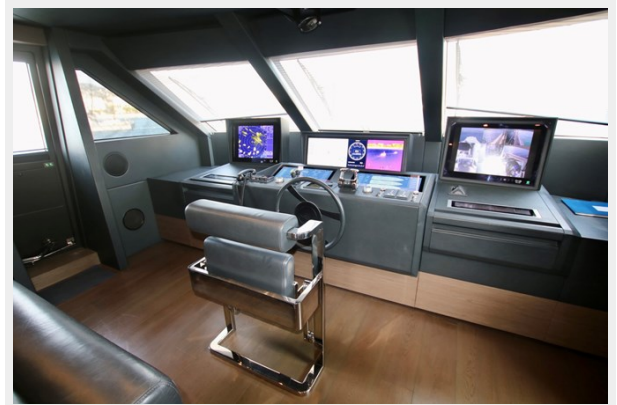
11



12



13



14



15



16



17



18



19



20



21



24



26



27



28



29



30



31



32



Capture



Capture0



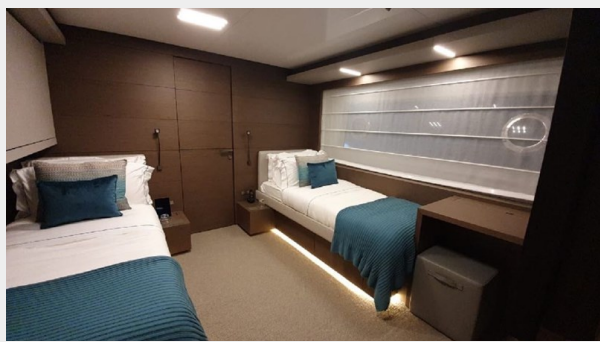
Capture1



Capture2



Capture4



Capture5



CONTACTS

Andrey Shestakov, leading yacht broker of the sales department of Shestakov Yacht Sales Inc. Shestakov Yacht Sales Inc., the official representative of the Miami/Fort Lauderdale FL headquarters.

Contact details

Email: **andrey@shestakovyachtsales.com**

Web: shestakovyachtsales.com/en/

Telephones

USA: **+1(954)274-4435**

Office hours

Monday – Saturday: **9:00 - 21:00** EDT

Sunday: **closed**

Address



Harbour Towne Marina, 850 NE 3rd St, STE 213, Dania, FL 33004