

ISABELL — GRAND BANKS



Builder: GRAND BANKS

Year Built: 1991

Model: Trawler Yacht

Price: PRICE ON APPLICATION

Location: United States

LOA: 36' (10.97mm)

Beam: 12.66

Max Draft: 4' (1.22mm)

Cruise Speed: 8 Knots Kts. (9 MPH)

Max Speed: 11 Knots Kts. (13 MPH)

Our experienced yacht broker, Andrey Shestakov, will help you choose and buy a yacht that best suits your needs **Isabell — GRAND BANKS** from our catalogue. Presently, at Shestakov Yacht Sales Inc., we have a wide variety of yachts available on our sale's list. We also work in close contact with all the big yacht manufacturers from all over the world.

If you would like to buy a yacht **Isabell — GRAND BANKS** or would like help answering any questions concerning purchasing, selling or chartering a yacht, please call **+1(954)274-4435**

TABLE OF CONTENTS

TABLE OF CONTENTS	2
SPECIFICATIONS	7
Overview	7
Basic Information	7
Dimensions	7
Speed, Capacities and Weight	7
Accommodations	8
Hull and Deck Information	8
Engine Information	8
PHOTOS	9
1_2790708_	9
0_2790708_	9
3_2790708_	9
2_2790708_	9
4_2790708_	10
5_2790708_	10
6_2790708_	10
7_2790708_	10
9_2790708_	11
8_2790708_	11
11_2790708_	11
10_2790708_	11
12_2790708_	12
13_2790708_	12
14_2790708_	12
15_2790708_	12
16_2790708_	13
17_2790708_	13

18_2790708_	13
19_2790708_	13
21_2790708_	14
20_2790708_	14
22_2790708_	14
23_2790708_	14
24_2790708_	15
25_2790708_	15
26_2790708_	15
27_2790708_	15
28_2790708_	16
29_2790708_	16
30_2790708_	16
31_2790708_	16
33_2790708_	17
32_2790708_	17
34_2790708_	17
35_2790708_	17
37_2790708_	18
36_2790708_	18
38_2790708_	18
39_2790708_	18
40_2790708_	19
41_2790708_	19
42_2790708_	19
43_2790708_	19
45_2790708_	20
44_2790708_	20
46_2790708_	20

47_2790708_	20
48_2790708_	21
49_2790708_	21
51_2790708_	21
50_2790708_	21
52_2790708_	22
53_2790708_	22
54_2790708_	22
55_2790708_	22
56_2790708_	23
57_2790708_	23
58_2790708_	23
59_2790708_	23
60_2790708_	24
61_2790708_	24
62_2790708_	24
63_2790708_	24
65_2790708_	24
64_2790708_	24
66_2790708_	25
67_2790708_	25
68_2790708_	25
69_2790708_	25
71_2790708_	26
70_2790708_	26
72_2790708_	26
73_2790708_	26
74_2790708_	27
75_2790708_	27

76_2790708_	27
77_2790708_	27
78_2790708_	28
79_2790708_	28
80_2790708_	28
81_2790708_	28
82_2790708_	29
83_2790708_	29
84_2790708_	29
85_2790708_	29
86_2790708_	30
87_2790708_	30
88_2790708_	30
89_2790708_	30
90_2790708_	31
91_2790708_	31
92_2790708_	31
93_2790708_	31
94_2790708_	32
95_2790708_	32
96_2790708_	32
97_2790708_	32
98_2790708_	33
99_2790708_	33
100_2790708_	33
101_2790708_	33
102_2790708_	34
103_2790708_	34
104_2790708_	34

105_2790708_	34
106_2790708_	35
107_2790708_	35
109_2790708_	35
108_2790708_	35
110_2790708_	36
111_2790708_	36
112_2790708_	36
113_2790708_	36
114_2790708_	37
115_2790708_	37
117_2790708_	37
116_2790708_	37
118_2790708_	38
119_2790708_	38
120_2790708_	38
121_2790708_	38
122_2790708_	39
123_2790708_	39
CONTACTS	40
Contact details	40
Telephones	40
Office hours	40
Address	40

SPECIFICATIONS

Overview

Fresh out of the yard with new bottom paint and pristine clean from stem to stern, Isabell is a boat for someone who wants to enjoy boating without the headaches of initial repairs. She gleams from a history of diligent owners, including the current one, offering classic styling without the wear and tear. Isabell's decks are fiberglass and fuel tanks are aluminum. Her AGM batteries are only a few months old, and her 5kw generator only has about 1470 hours on it. Her interior and exterior teak are in showroom condition, and she comes fully equipped with fenders, lines, full canvas covers, and a 2010 dinghy with newer outboard. Loop compatible with a bridge clearance of as little as just over 13 feet with her mast down, her current owners have enjoyed her from Canada to the Keys over the last 7 years but life is now taking them back to land. Whether you're doing The Great Loop or cruising to the Bahamas, she's ready for you and your dreams of adventure!

Basic Information

Category: Trawler Yacht

Model Year: 1991

Year Built: 1991

Country: United States

Dimensions

LOA: 36' (10.97mm)

LWL: 35' 2" (10.72mm)

Beam: 12.66

Max Draft: 4' (1.22mm)

Speed, Capacities and Weight

Cruise Speed: 8 Knots Kts. (9 MPH)

Max Speed: 11 Knots Kts. (13 MPH)

Water Capacity: 153 Gallons

Holding Tank: 40 Gal Gallons

Fuel Capacity: 400 Gal Gallons

Accommodations

Total Cabins: 2

Sleeps: 5

Total Heads: 2

Hull and Deck Information

Hull Material: Fiberglass

Engine Information

Engines: 1

Manufacturer: Lehman

PHOTOS

0_2790708_



1_2790708_



2_2790708_



3_2790708_



4_2790708_



5_2790708_



6_2790708_



7_2790708_



8_2790708_



9_2790708_



10_2790708_



11_2790708_



12_2790708_



13_2790708_



14_2790708_



15_2790708_



16_2790708_



17_2790708_



18_2790708_



19_2790708_



20_2790708_



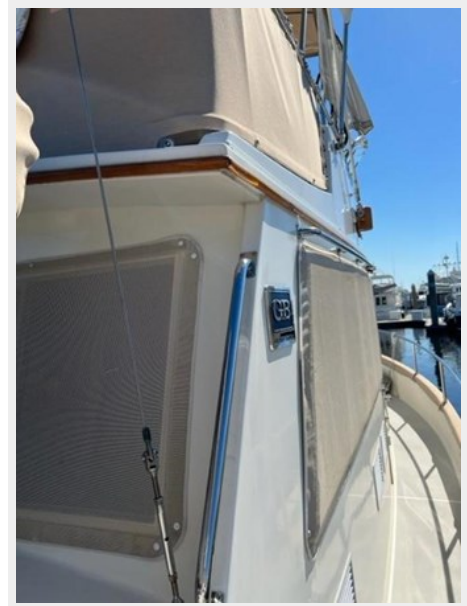
21_2790708_



22_2790708_



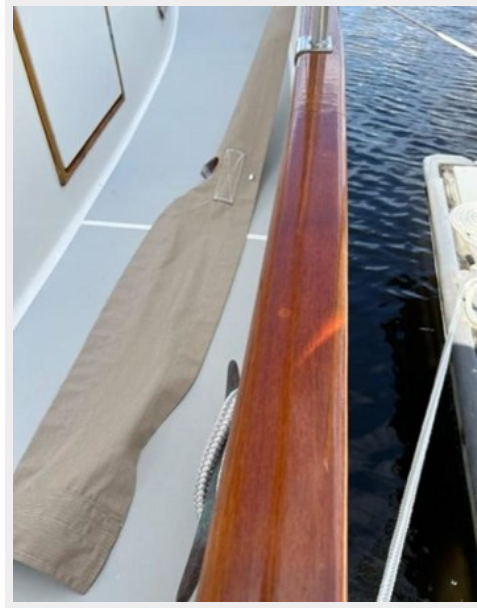
23_2790708_



24_2790708_



25_2790708_



26_2790708_



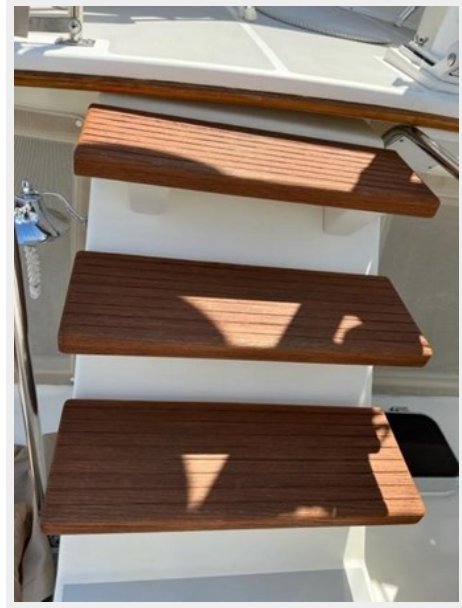
27_2790708_



28_2790708_



29_2790708_



30_2790708_



31_2790708_



32_2790708_



33_2790708_



34_2790708_



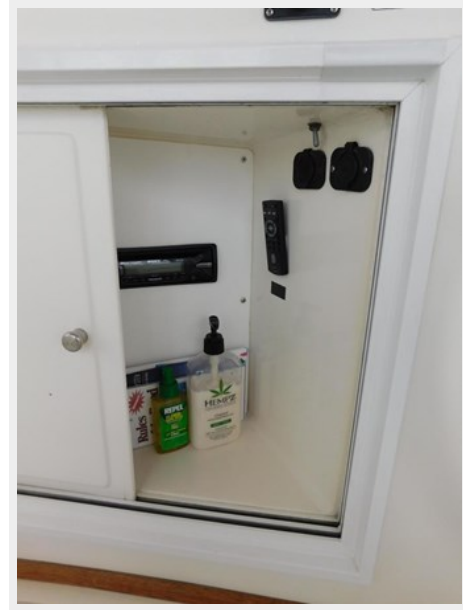
35_2790708_



36_2790708_



37_2790708_



38_2790708_



39_2790708_



40_2790708_



41_2790708_



42_2790708_



43_2790708_



44_2790708_



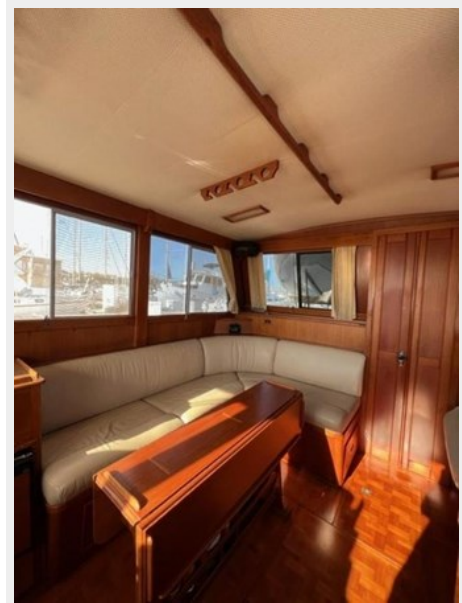
45_2790708_



46_2790708_



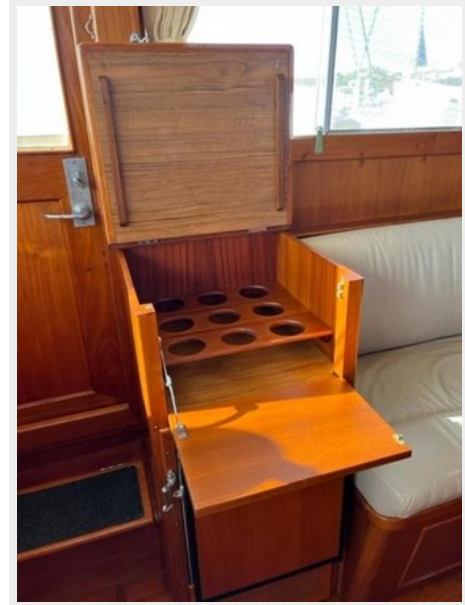
47_2790708_



48_2790708_



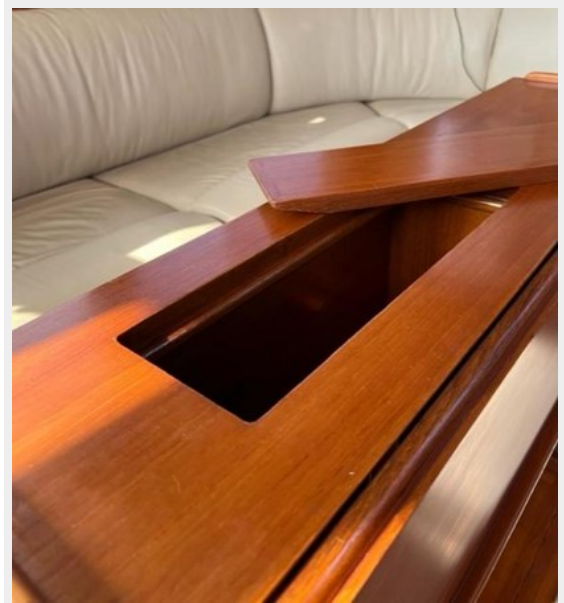
49_2790708_



50_2790708_



51_2790708_



52_2790708_



53_2790708_



54_2790708_



55_2790708_



56_2790708_



57_2790708_



58_2790708_



59_2790708_



60_2790708_



61_2790708_



62_2790708_



63_2790708_



64_2790708_



65_2790708_



66_2790708_



67_2790708_



68_2790708_



69_2790708_



70_2790708_



71_2790708_



72_2790708_



73_2790708_



74_2790708_



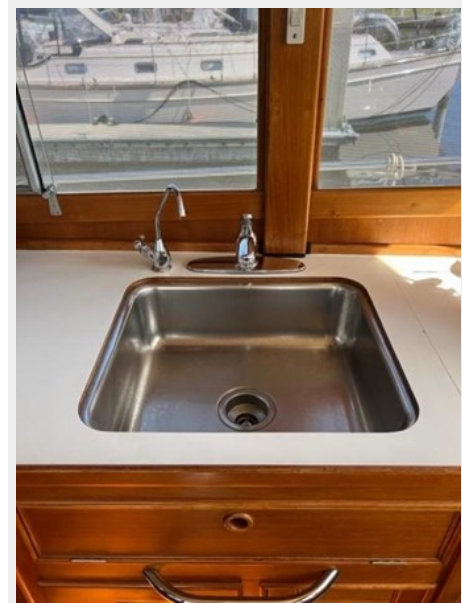
75_2790708_



76_2790708_



77_2790708_



78_2790708_



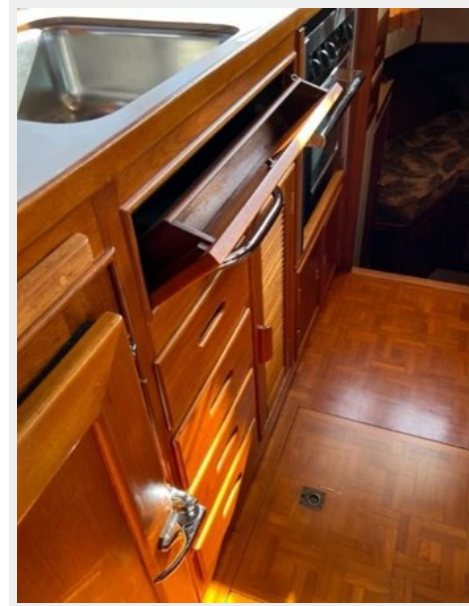
79_2790708_



80_2790708_



81_2790708_



82_2790708_



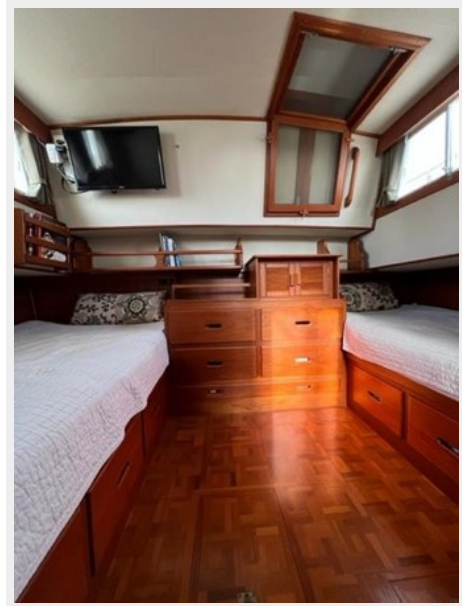
83_2790708_



84_2790708_



85_2790708_



86_2790708_



87_2790708_



88_2790708_



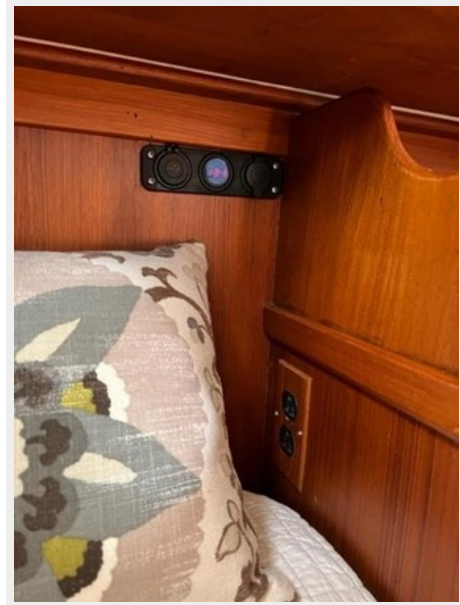
89_2790708_



90_2790708_



91_2790708_



92_2790708_



93_2790708_



94_2790708_



95_2790708_



96_2790708_



97_2790708_



98_2790708_



99_2790708_



100_2790708_



101_2790708_



102_2790708_



103_2790708_



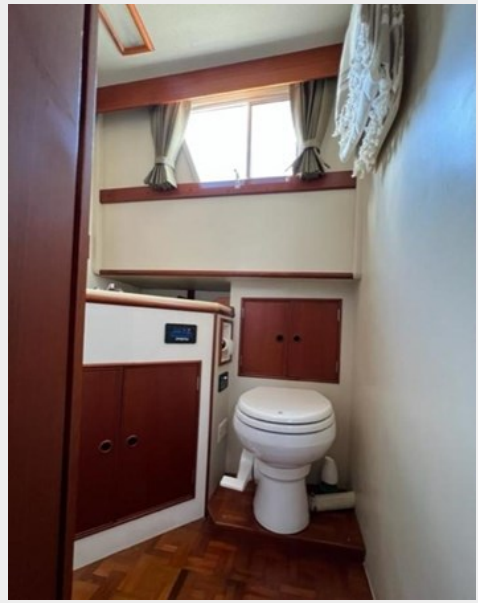
104_2790708_



105_2790708_



106_2790708_



107_2790708_



109_2790708_



108_2790708_



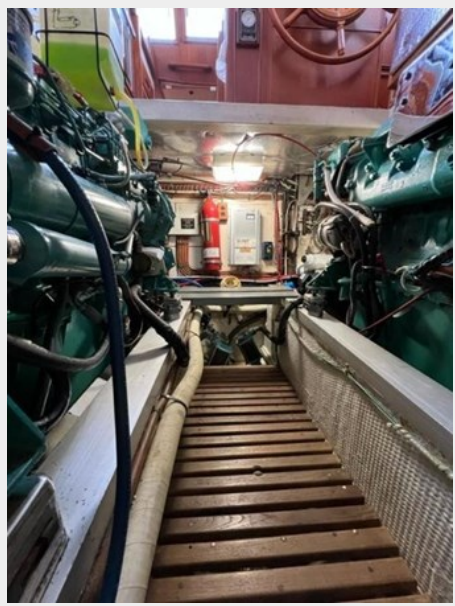
110_2790708_



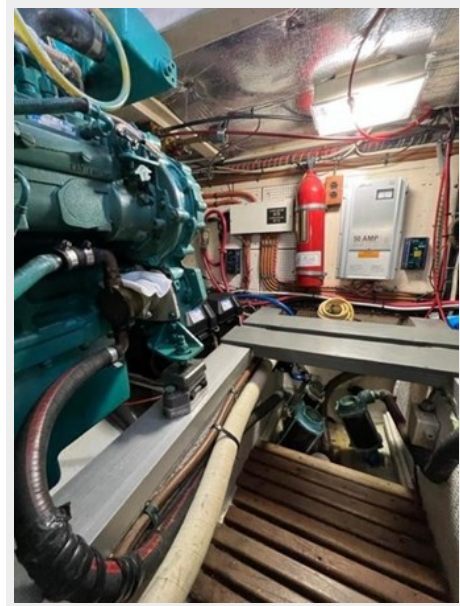
111_2790708_



112_2790708_



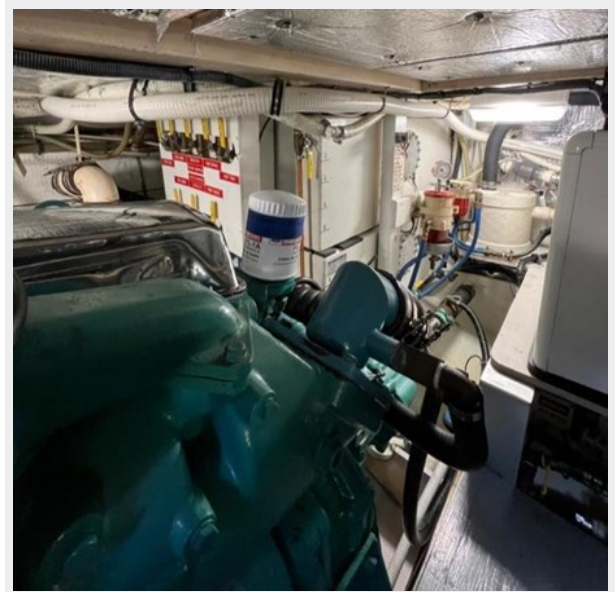
113_2790708_



114_2790708_



115_2790708_



116_2790708_



117_2790708_



118_2790708_



119_2790708_



120_2790708_



121_2790708_



122_2790708_



123_2790708_



CONTACTS

Andrey Shestakov, leading yacht broker of the sales department of Shestakov Yacht Sales Inc. Shestakov Yacht Sales Inc., the official representative of the Miami/Fort Lauderdale FL headquarters.

Contact details

Email: **andrey@shestakovyachtsales.com**

Web: shestakovyachtsales.com/en/

Telephones

USA: +1(954)274-4435

Office hours

Monday – Saturday: **9:00 - 21:00** EDT

Sunday: **closed**

Address



Harbour Towne Marina, 850 NE 3rd St,
STE 213, Dania, FL 33004