

CANDELARIA — AZIMUT YACHTS



Builder: [AZIMUT YACHTS](#)

LOA: 70' (21.34mm)

Year Built: 2019

Model: Motor Yacht

Price: PRICE ON APPLICATION

Our experienced yacht broker, Andrey Shestakov, will help you choose and buy a yacht that best suits your needs **CANDELARIA — AZIMUT YACHTS** from **our catalogue**. Presently, at **Shestakov Yacht Sales Inc.**, we have a wide variety of yachts available on **our sale's list**. We also work in close contact with all the big **yacht manufacturers** from all over the world.

If you would like to buy a yacht **CANDELARIA — AZIMUT YACHTS** or would like help answering any questions concerning purchasing, selling or chartering a yacht, please call **+1(954)274-4435**

TABLE OF CONTENTS

TABLE OF CONTENTS	2
SPECIFICATIONS	4
Overview	4
Basic Information	8
Dimensions	9
Accommodations	9
Hull and Deck Information	9
Engine Information	9
PHOTOS	10
DJI_0066-2	10
DJI_0068-2	10
DJI_0077-2	10
DJI_0070-2	10
DJI_0080	10
DSC_2866	10
DSC_2875	11
DSC_2905	11
DSC_2906	11
DSC_2860	11
DSC_2861	11
DSC_2862	11
DSC_2865	12
DSC_2738	12
DSC_2743	12
DSC_2748	12
DSC_2750	12
DSC_2754	12
DSC_2766	13

DSC_2836	13
DSC_2763	13
DSC_2770	13
DSC_2773	13
DSC_2775	13
DSC_2787	14
DSC_2788	14
DSC_2791	14
DSC_2795	14
DSC_2800	14
DSC_2807	14
DSC_2801	15
DSC_2917	15
CONTACTS	16
Contact details	16
Telephones	16
Office hours	16
Address	16

SPECIFICATIONS

Overview

Salon

- Hideaway TV
- Wine Cooler
- Electric, Adjustable Tables
- L-Shaped Sofa
- Lighting Luxury Package
- Wooden Floor
- A/V Package with App control.
- Apple TV & SAT TV systems

Helm

- Electric Hard-top above the Interior Helm Station
- Volvo Penta IPS-drive with joystick-steering
- Bow Thruster (multiple 3 stations operation)
- Electric Searchlight
- Side Access Doors to the Cockpit
- Raymarine Chips
- Raymarine Platinum Navigation Package, plus FLIR
- Raymarine Fishfinder
- Raymarine AIS
- Co-pilot Seat
- Electric Blackout Awning for Hard-top

Galley

- Miele Appliances (Microwave/Oven/Stove)
- Fridge and Freezer
- Dishwasher
- Lighting System
- Washer and dryer (two separate units)

Master Stateroom

- Queen Berth
- Decor Custom Upgrade Full Set of Linens
- Mirror
- Safe
- En-Suite Head with Separate Shower
- Vanity Table

- Toilet with Bidet Faucet
- Full-Size Closet
- SAT TV System

VIP Stateroom

- Queen Berth
- SAT TV System
- Decor Custom Upgrade Full Set of Linens
- En-Suite Head with Separate Shower

Port Guest Stateroom

- Twin Berths
- Decor Custom Upgrade Full Set of Linens
- Access to Guest Head with Separate Shower

Starboard Guest Stateroom

- Over / Under Twin Berths
- Decor Custom Upgrade Full Set of Linens
- Access to Guest Head with Separate Shower

Flybridge

- Additional Seakeeper Control Station on the Flybridge Helm
- Co-pilot Seat on Flybridge Helm
- Drawer Refrigerator
- Bimini Top
- Sofa
- Upgraded Cushions
- JL Audio Marine speakers

Bow

- Table
- Hydraulic Bimini
- Sofa
- Sunpad
- Ultra Marine Anchor with Chain & Auto Wash System
- JL Audio Marine Speakers

Cockpit

- Cockpit Docking Station

- Electric Mooring Winches
- Table with Carbon-Finished Top
- Dining Area with Wet Bar with Fridge and BBQ
- Upgraded External Cushions in Fabric
- Ice-maker
- Audio Marine Speakers
- Lounging Area

Stern

- Swim Platform with Teak
- Cover Curtain for Garage Door
- Hauling-Launching System for Tender
- Full Set of Jet Ski Rollers

Hull & Decks

- Teak on Entire 3 decks and Swiveling Swim Platform (sealed)
- Dimmer Lights
- Underwater Lights
- Telescopic Gangway
- Miscellaneous fenders, covers, etc.

Crew Cabin

- Bunk Twin Berths

Full Set of Linens

- Crew Head

Electrical & Mechanical Systems

- Tropical A/C system
- Generator
- Glendenning cables
- Fuel Transfer System
- Carbon dioxide detectors
- Full cleaning Materials Package
- Full Safety Equipment
- Miscellaneous fenders, covers, etc.
- Central vacuum system

Tender

- Tender Williams 345 Sportjet with 90hp Engine
- Automatic Winch System for Tender

2018 Volvo Penta D13 IPS 1050 (Engine 1)**Engine Type:****Inboard****Fuel Type:****Diesel****Hours:****940****Power:****800 hp****Drive Type:****Pod Drive****2018 Volvo Penta D13 IPS 1050 (Engine 2)****Engine Type:****Inboard****Fuel Type:****Diesel****Hours:****940****Power:****800 hp****Drive Type:****Pod Drive****2018 Volvo Penta D13 IPS 1050 (Engine 3)****Engine Type:****Inboard**

Fuel Type:**Diesel****Hours:****940****Power:****800 hp****Drive Type:****Pod Drive****Disclaimer**

The Company offers the details of this vessel in good faith but cannot guarantee or warrant the accuracy of this information nor warrant the condition of the vessel. A buyer should instruct his agents, or his surveyors, to investigate such details as the buyer desires validated. This vessel is offered subject to prior sale, price change, or withdrawal without notice.

Mechanical Disclaimer Engine and generator hours are as of the date of the original listing and are a representation of what the listing broker is told by the owner and/or actual reading of the engine hour meters. The broker cannot guarantee the true hours. It is the responsibility of the purchaser and/or his agent to verify engine hours, warranties implied or otherwise and major overhauls as well as all other representations noted on the listing.

Basic Information

Category: Motor Yacht**Model Year:** 2019**Year Built:** 2019

Dimensions

LOA: 70' (21.34mm)

Accommodations

Total Cabins: 3

Hull and Deck Information

Hull Material: Fiberglass

Engine Information

Engines: 3

Manufacturer: Volvo Penta

PHOTOS

DJI_0066-2



DJI_0068-2



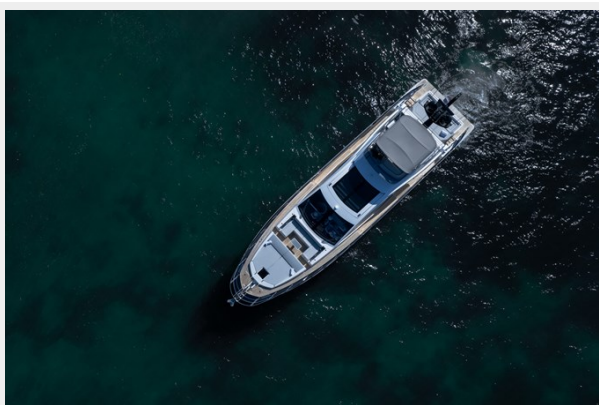
DJI_0077-2



DJI_0070-2



DJI_0080



DSC_2866



DSC_2875



DSC_2905



DSC_2906



DSC_2860



DSC_2861



DSC_2862



DSC_2865



DSC_2738



DSC_2743



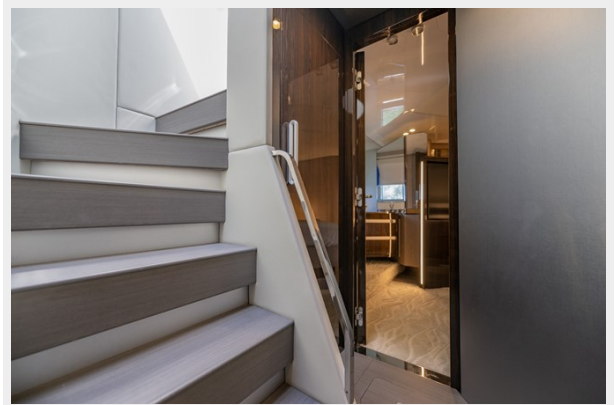
DSC_2748



DSC_2750



DSC_2754



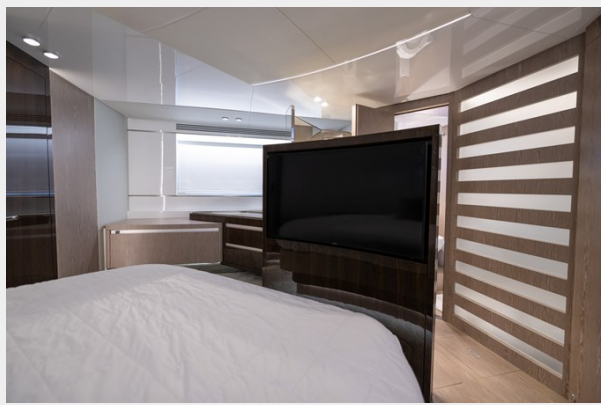
DSC_2766



DSC_2836



DSC_2763



DSC_2770



DSC_2773



DSC_2775



DSC_2787



DSC_2788



DSC_2791



DSC_2795



DSC_2800



DSC_2807



DSC_2801



DSC_2917



CONTACTS

Andrey Shestakov, leading yacht broker of the sales department of Shestakov Yacht Sales Inc. Shestakov Yacht Sales Inc., the official representative of the Miami/Fort Lauderdale FL headquarters.

Contact details

Email: **andrey@shestakovyachtsales.com**

Web: shestakovyachtsales.com/en/

Telephones

USA: **+1(954)274-4435**

Office hours

Monday – Saturday: **9:00 - 21:00** EDT

Sunday: **closed**

Address



Harbour Towne Marina, 850 NE 3rd St, STE 213, Dania, FL 33004