

BEATS WORKIN' V — SEA RAY



Builder: SEA RAY

Year Built: 2003

Model: Cruising Yacht

Price: PRICE ON APPLICATION

LOA: 38' (11.58mm)

Beam: 13

Max Draft: 3' 4" (1.02mm)

Our experienced yacht broker, Andrey Shestakov, will help you choose and buy a yacht that best suits your needs **BEATS WORKIN' V — SEA RAY** from **our catalogue**. Presently, at **Shestakov Yacht Sales Inc.**, we have a wide variety of yachts available on **our sale's list**. We also work in close contact with all the big **yacht manufacturers** from all over the world.

If you would like to buy a yacht **BEATS WORKIN' V — SEA RAY** or would like help answering any questions concerning purchasing, selling or chartering a yacht, please call **+1(954)274-4435**

TABLE OF CONTENTS

TABLE OF CONTENTS	2
SPECIFICATIONS	5
Basic Information	5
Dimensions	5
Speed, Capacities and Weight	5
Accommodations	5
Hull and Deck Information	5
Engine Information	6
PHOTOS	7
Stbd profile	7
Port bow profile	7
Port quarter profile	7
Stbd quarter profile	7
Stern profile	7
Cockpit	7
Salon	8
Galley	8
Master stateroom	8
Aerial view	8
Cockpit view 2	8
Cockpit seating area	8
Cockpit TV	9
Helm station	9
Helm station view 2	9
Helm chairs	9
Salon / mid cabin	9
Port profile 2	9
Mid cabin	10

Galley view 2	10
Galley view 3	10
Wine refrigerator	10
Cooktop	10
Master stateroom view 2	10
Head	11
TV in the master stateroom	11
Shower	11
Vanity sink	11
Stbd profile 2	12
Engines	12
Engine 1	12
Engine 2	12
ProNautic 1260P charger	12
Main DC breaker panel	12
Port profile 3	13
Helm electronics	13
Helm electronics 2	13
Stbd profile 3	13
Garmin	13
Bow thruster control/Fusion radio	13
ACR/trim tabs control	14
Port profile 4	14
Garmin VHF	14
JL Audio speaker	14
Port profile 5	14
Stbd bow profile (in slip)	14
Port bow profile (in slip)	15
Stbd quarter profile (in slip)	15

Stern profile (in slip)	15
Swim platform (in slip)	15
Port bow profile 2	15
Anchor	15
CONTACTS	16
Contact details	16
Telephones	16
Office hours	16
Address	16

SPECIFICATIONS

Basic Information

Category: Cruising Yacht

Sub Category: Cabin Cruiser

Model Year: 2003

Year Built: 2003

Dimensions

LOA: 38' (11.58mm)

Beam: 13

Max Draft: 3' 4" (1.02mm)

Speed, Capacities and Weight

Water Capacity: 70 Gallons

Holding Tank: 42 Gal Gallons

Fuel Capacity: 275 Gal Gallons

Accommodations

Total Cabins: 1

Total Berths: 3

Sleeps: 5

Total Heads: 1

Hull and Deck Information

Hull Material: Fiberglass

Hull Configuration: Deep Vee

Hull Color: White

Engine Information

Engines: 2

Manufacturer: Mercury Mercruiser

Engine Type: Inboard

Fuel Type: Gas

PHOTOS

Stbd profile



Port bow profile



Port quarter profile



Stbd quarter profile



Stern profile



Cockpit



Salon



Galley



Master stateroom



Aerial view



Cockpit view 2



Cockpit seating area



Cockpit TV



Helm station



Helm station view 2



Helm chairs



Port profile 2



Salon / mid cabin



Mid cabin



Galley view 2



Galley view 3



Wine refrigerator



Cooktop



Master stateroom view 2



TV in the master stateroom



Head



Shower



Vanity sink



Stbd profile 2



Engines



Engine 1



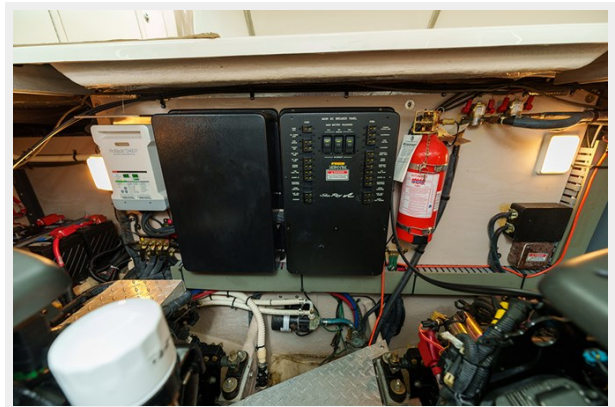
Engine 2



ProNautic 1260P charger



Main DC breaker panel



Port profile 3



Helm electronics



Helm electronics 2



Stbd profile 3



Garmin



Bow thruster control/Fusion radio



ACR/trim tabs control



Port profile 4



Garmin VHF



JL Audio speaker



Port profile 5



Stbd bow profile (in slip)



Port bow profile (in slip)



Stbd quarter profile (in slip)



Stern profile (in slip)



Swim platform (in slip)



Anchor



Port bow profile 2



CONTACTS

Andrey Shestakov, leading yacht broker of the sales department of Shestakov Yacht Sales Inc. Shestakov Yacht Sales Inc., the official representative of the Miami/Fort Lauderdale FL headquarters.

Contact details

Email: **andrey@shestakovyachtsales.com**

Web: shestakovyachtsales.com/en/

Telephones

USA: **+1(954)274-4435**

Office hours

Monday – Saturday: **9:00 - 21:00** EDT

Sunday: **closed**

Address



Harbour Towne Marina, 850 NE 3rd St, STE 213, Dania, FL 33004