

## MISSY B II — HARGRAVE



**Builder:** HARGRAVE

**Year Built:** 2005

**Model:** Semi-Displacement

**Price:** \$4,925,000 AUD

**Location:** Australia

**LOA:** 115' 2" (35.1mm)

**Beam:** 23.91

**Max Draft:** 7' 7" (2.31mm)

**Cruise Speed:** 10 Knots Kts. (12 MPH)

**Max Speed:** 16 Knots Kts. (18 MPH)

Our experienced yacht broker, Andrey Shestakov, will help you choose and buy a yacht that best suits your needs **Missy B II — HARGRAVE** from our catalogue. Presently, at Shestakov Yacht Sales Inc., we have a wide variety of yachts available on our sale's list. We also work in close contact with all the big yacht manufacturers from all over the world.

If you would like to buy a yacht **Missy B II — HARGRAVE** or would like help answering any questions concerning purchasing, selling or chartering a yacht, please call **+1(954)274-4435**

# TABLE OF CONTENTS

|                              |   |
|------------------------------|---|
| TABLE OF CONTENTS            | 2 |
| SPECIFICATIONS               | 5 |
| Overview                     | 5 |
| Basic Information            | 5 |
| Dimensions                   | 5 |
| Speed, Capacities and Weight | 5 |
| Accommodations               | 5 |
| Hull and Deck Information    | 6 |
| Engine Information           | 6 |
| PHOTOS                       | 7 |
| 2                            | 7 |
| 5                            | 7 |
| Missy B Salon 1              | 7 |
| Missy B Salon 2              | 7 |
| Missy B Stair Dining         | 7 |
| Missy B Dining               | 7 |
| Missy B Galley 2             | 8 |
| Missy B Galley 1             | 8 |
| Missy B Helm 2               | 8 |
| Missy B Helm 1               | 8 |
| Missy B Forward 1            | 8 |
| Missy B Forward 2            | 8 |
| Missy B Forward 3            | 8 |
| Missy B Forward 4            | 8 |
| Missy B Midship Master 1     | 9 |
| Missy B Midship Master 2     | 9 |
| Missy B Midship Master 3     | 9 |
| Missy B Midship Master 4     | 9 |

|                        |           |
|------------------------|-----------|
| Missy B Corridor       | 9         |
| Missy B Stateroom 3    | 9         |
| Missy B Stateroom 4    | 9         |
| Missy B Stateroom 1    | 9         |
| Missy B Starteroom 2   | 10        |
| Missy B Office 2       | 10        |
| Missy B Office 1       | 10        |
| Missy B Office Ensuite | 10        |
| Missy B Skylounge 1    | 10        |
| Missy B Skylounge 2    | 10        |
| Missy B Crew 4         | 10        |
| Missy B Crew 2         | 10        |
| Missy B Crew 1         | 11        |
| Missy B Crew 3         | 11        |
| Missy B Engine 2       | 11        |
| Missy B Engine 1       | 11        |
| 3                      | 11        |
| 4                      | 11        |
| 6                      | 11        |
| Missy B Upper Deck 2   | 11        |
| Missy B Uppr Deck      | 12        |
| Sun Deck 1             | 12        |
| Sun Deck 2             | 12        |
| 8                      | 12        |
| 7                      | 12        |
| <b>CONTACTS</b>        | <b>13</b> |
| Contact details        | 13        |
| Telephones             | 13        |
| Office hours           | 13        |

---

Address

13

---

# SPECIFICATIONS

---

## Overview

---

2004 115' HARGRAVE YACHT MISSY B II

This impressive tri-deck vessel built by Hargrave Yachts exhibits pure luxury, elegance and prime performance a true superyacht not to be overlooked. She underwent an extensive million dollar plus refit in 2010 which saw the addition of a new fly bridge with sun pads, seating and dining tables, a new exterior paint from top to bottom and new interior carpet throughout the vessel. Most recently she has undergone further improvement works including sundeck redesign, a spa and bar.

## Basic Information

---

**Category:** Semi-Displacement

**Sub Category:** Semi-Displacement

**Model Year:** 2005

**Year Built:** 2005

**Country:** Australia

## Dimensions

---

**LOA:** 115' 2" (35.1mm)

**Beam:** 23.91

**Max Draft:** 7' 7" (2.31mm)

## Speed, Capacities and Weight

---

**Cruise Speed:** 10 Knots Kts. (12 MPH)

**Max Speed:** 16 Knots Kts. (18 MPH)

**Gross Tonnage:** 268 Pounds

**Water Capacity:** 3785 Gallons

**Fuel Capacity:** 4999.98 Gal Gallons

## Accommodations

---

**Total Cabins:** 5

---

## Hull and Deck Information

---

**Hull Material:** GRP

**Deck Material:** Teak

**Hull Configuration:** Semi-Displacement

**Interior Designer:** Yacht Interiors by Shelley

---

## Engine Information

---

**Engines:** 2

**Manufacturer:** Caterpillar

**Engine Type:** Inboard

**Fuel Type:** Diesel

# PHOTOS

2



5



**Missy B Salon 1**



**Missy B Salon 2**



**Missy B Stair Dining**



**Missy B Dining**



**Missy B Galley 2**



**Missy B Galley 1**



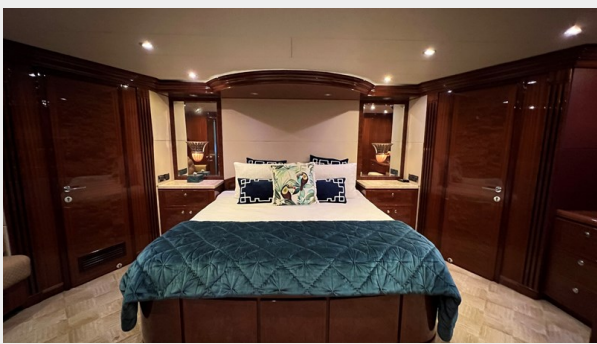
**Missy B Helm 2**



**Missy B Helm 1**



**Missy B Forward 1**



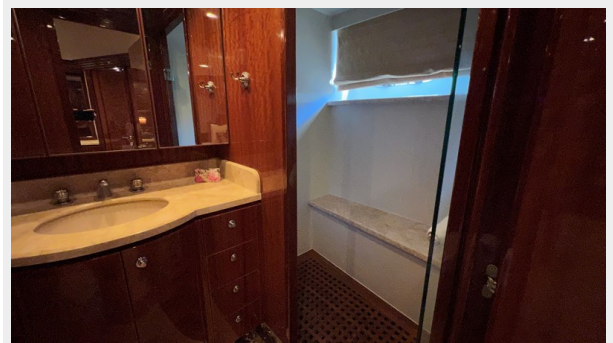
**Missy B Forward 2**



**Missy B Forward 3**



**Missy B Forward 4**





**Missy B Midship Master 1**



**Missy B Midship Master 2**



**Missy B Midship Master 3**



**Missy B Midship Master 4**



**Missy B Corridor**



**Missy B Stateroom 3**



**Missy B Stateroom 4**



**Missy B Stateroom 1**



**Missy B Starteroom 2**



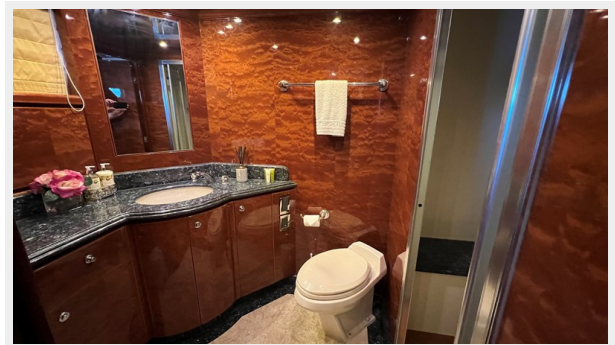
**Missy B Office 2**



**Missy B Office 1**



**Missy B Office Ensuite**



**Missy B Skylounge 1**



**Missy B Skylounge 2**



**Missy B Crew 4**



**Missy B Crew 2**



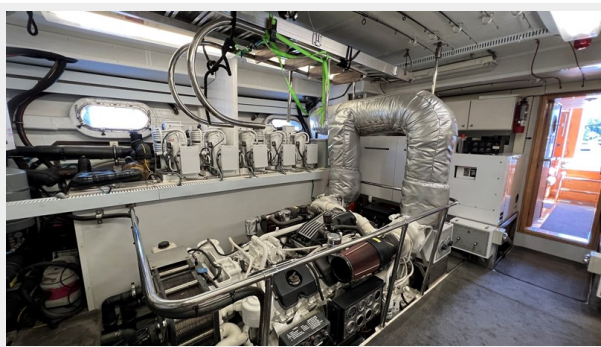
**Missy B Crew 1**



**Missy B Crew 3**



**Missy B Engine 2**



**Missy B Engine 1**



**3**



**4**



**6**



**Missy B Upper Deck 2**



Missy B Uppr Deck



Sun Deck 1



Sun Deck 2



8



7



# CONTACTS

---

Andrey Shestakov, leading yacht broker of the sales department of Shestakov Yacht Sales Inc. Shestakov Yacht Sales Inc., the official representative of the Miami/Fort Lauderdale FL headquarters.

## Contact details

---

Email: [andrey@shestakovyachtsales.com](mailto:andrey@shestakovyachtsales.com)

Web: [shestakovyachtsales.com/en/](http://shestakovyachtsales.com/en/)

## Telephones

---

USA: +1(954)274-4435

## Office hours

---

Monday – Saturday: **9:00 - 21:00** EDT

Sunday: **closed**

## Address

---



Harbour Towne Marina, 850 NE 3rd St,  
STE 213, Dania, FL 33004