

## NO RESERVE — BERTRAM



**Builder:** BERTRAM

**Year Built:** 2018

**Model:** Sport Fisherman

**Price:** PRICE ON APPLICATION

**Location:** United States

**LOA:** 35' (10.67mm)

**Beam:** 12.41

**Max Draft:** 2' 6" (0.76mm)

**Cruise Speed:** 27 Knots Kts. (31 MPH)

**Max Speed:** 36 Knots Kts. (41 MPH)

Our experienced yacht broker, Andrey Shestakov, will help you choose and buy a yacht that best suits your needs **NO RESERVE — BERTRAM** from our catalogue. Presently, at Shestakov Yacht Sales Inc., we have a wide variety of yachts available on our sale's list. We also work in close contact with all the big yacht manufacturers from all over the world.

If you would like to buy a yacht **NO RESERVE — BERTRAM** or would like help answering any questions concerning purchasing, selling or chartering a yacht, please call **+1(954)274-4435**

# TABLE OF CONTENTS

TABLE OF CONTENTS	2
SPECIFICATIONS	5
Basic Information	5
Dimensions	5
Speed, Capacities and Weight	5
Accommodations	5
Hull and Deck Information	5
Engine Information	5
PHOTOS	6
35_bertram_no_reserve_profiles_2	6
35_bertram_no_reserve_profiles_3	6
35_bertram_no_reserve_profiles_4	6
35_bertram_no_reserve_profiles_5	6
35_bertram_no_reserve_profiles_6	7
35_bertram_no_reserve_profiles_7	7
35_bertram_no_reserve_profiles_8	7
35_bertram_no_reserve_profiles_9	7
35_bertram_no_reserve_profiles_10	7
35_bertram_no_reserve_profiles_11	7
35_bertram_no_reserve_profiles_13	8
35_bertram_no_reserve_profiles_12	8
35_bertram_no_reserve_profiles_14	8
35_bertram_no_reserve_profiles_15	8
35_bertram_no_reserve_profiles_16	8
35_bertram_no_reserve_profiles_17	8
35_bertram_no_reserve_flybridge_1	9
35_bertram_no_reserve_flybridge_2	9
35_bertram_no_reserve_flybridge_3	9

---

35_bertram_no_reserve_flybridge_4	9
35_bertram_no_reserve_flybridge_5	9
35_bertram_no_reserve_flybridge_6	9
35_bertram_no_reserve_flybridge_8	10
35_bertram_no_reserve_flybridge_7	10
35_bertram_no_reserve_flybridge_9	10
35_bertram_no_reserve_flybridge_10	10
35_bertram_no_reserve_flybridge_11	11
35_bertram_no_reserve_cockpit_1	11
35_bertram_no_reserve_cockpit_2	11
35_bertram_no_reserve_cockpit_3	11
35_bertram_no_reserve_cockpit_5	12
35_bertram_no_reserve_cockpit_4	12
35_bertram_no_reserve_cockpit_6	12
35_bertram_no_reserve_cockpit_7	12
35_bertram_no_reserve_cockpit_8	12
35_bertram_no_reserve_cockpit_9	12
35_bertram_no_reserve_cockpit_11	13
35_bertram_no_reserve_cockpit_10	13
35_bertram_no_reserve_salon_2	13
35_bertram_no_reserve_salon_1	13
35_bertram_no_reserve_salon_3	14
35_bertram_no_reserve_salon_4	14
35_bertram_no_reserve_salon_5	14
35_bertram_no_reserve_salon_6	14
35_bertram_no_reserve_salon_7	14
35_bertram_no_reserve_salon_8	14
35_bertram_no_reserve_salon_9	15
35_bertram_no_reserve_salon_10	15

---

---

35_bertram_no_reserve_galley_1	15
35_bertram_no_reserve_salon_11	15
35_bertram_no_reserve_galley_2	15
35_bertram_no_reserve_galley_3	15
35_bertram_no_reserve_stateroom_1	16
35_bertram_no_reserve_galley_4	16
35_bertram_no_reserve_stateroom_2	16
35_bertram_no_reserve_stateroom_3	16
35_bertram_no_reserve_head_1	17
35_bertram_no_reserve_stateroom_4	17
35_bertram_no_reserve_head_2	17
35_bertram_no_reserve_engines_1	17
35_bertram_no_reserve_engines_2	18
35_bertram_no_reserve_engines_3	18
35_bertram_no_reserve_engines_5	18
35_bertram_no_reserve_engines_4	18
35_bertram_no_reserve_engines_6	19
<b>CONTACTS</b>	<b>20</b>
Contact details	20
Telephones	20
Office hours	20
Address	20

---

# SPECIFICATIONS

---

## Basic Information

---

**Category:** Sport Fisherman

**Model Year:** 2018

**Year Built:** 2018

**Country:** United States

## Dimensions

---

**LOA:** 35' (10.67mm)

**LWL:** 31' 5" (9.58mm)

**Beam:** 12.41

**Max Draft:** 2' 6" (0.76mm)

## Speed, Capacities and Weight

---

**Cruise Speed:** 27 Knots Kts. (31 MPH)

**Max Speed:** 36 Knots Kts. (41 MPH)

**Water Capacity:** 50 Gallons

**Holding Tank:** 30 Gal Gallons

**Fuel Capacity:** 300 Gal Gallons

## Accommodations

---

**Total Cabins:** 1

**Total Heads:** 1

## Hull and Deck Information

---

**Hull Material:** Fiberglass

## Engine Information

---

**Engines:** 2

**Manufacturer:** CAT

**Engine Type:** Inboard

**Fuel Type:** Diesel



# PHOTOS

35\_bertram\_no\_reserve\_profiles\_2



35\_bertram\_no\_reserve\_profiles\_3



35\_bertram\_no\_reserve\_profiles\_4



35\_bertram\_no\_reserve\_profiles\_5





35\_bertram\_no\_reserve\_profiles\_6



35\_bertram\_no\_reserve\_profiles\_7



35\_bertram\_no\_reserve\_profiles\_8



35\_bertram\_no\_reserve\_profiles\_9



35\_bertram\_no\_reserve\_profiles\_10



35\_bertram\_no\_reserve\_profiles\_11





35\_bertram\_no\_reserve\_profiles\_12



35\_bertram\_no\_reserve\_profiles\_13



35\_bertram\_no\_reserve\_profiles\_14



35\_bertram\_no\_reserve\_profiles\_15



35\_bertram\_no\_reserve\_profiles\_16



35\_bertram\_no\_reserve\_profiles\_17





35\_bertram\_no\_reserve\_flybridge\_1



35\_bertram\_no\_reserve\_flybridge\_2



35\_bertram\_no\_reserve\_flybridge\_3



35\_bertram\_no\_reserve\_flybridge\_4



35\_bertram\_no\_reserve\_flybridge\_5



35\_bertram\_no\_reserve\_flybridge\_6



35\_bertram\_no\_reserve\_flybridge\_8



35\_bertram\_no\_reserve\_flybridge\_7



35\_bertram\_no\_reserve\_flybridge\_9



35\_bertram\_no\_reserve\_flybridge\_10





35\_bertram\_no\_reserve\_flybridge\_11



35\_bertram\_no\_reserve\_cockpit\_1



35\_bertram\_no\_reserve\_cockpit\_2



35\_bertram\_no\_reserve\_cockpit\_3





35\_bertram\_no\_reserve\_cockpit\_4



35\_bertram\_no\_reserve\_cockpit\_5



35\_bertram\_no\_reserve\_cockpit\_6



35\_bertram\_no\_reserve\_cockpit\_7



35\_bertram\_no\_reserve\_cockpit\_8



35\_bertram\_no\_reserve\_cockpit\_9



35\_bertram\_no\_reserve\_cockpit\_10



35\_bertram\_no\_reserve\_cockpit\_11



35\_bertram\_no\_reserve\_salon\_1

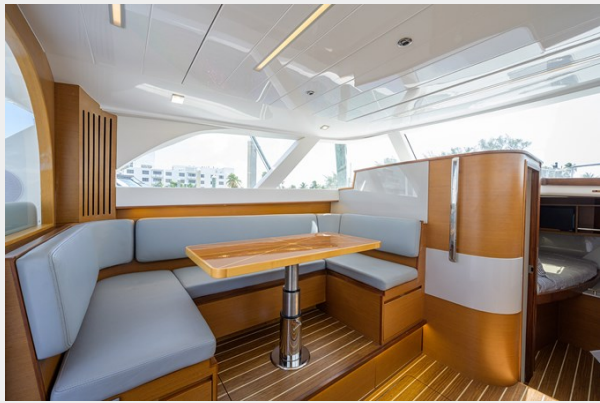


35\_bertram\_no\_reserve\_salon\_2





35\_bertram\_no\_reserve\_salon\_3



35\_bertram\_no\_reserve\_salon\_4



35\_bertram\_no\_reserve\_salon\_5



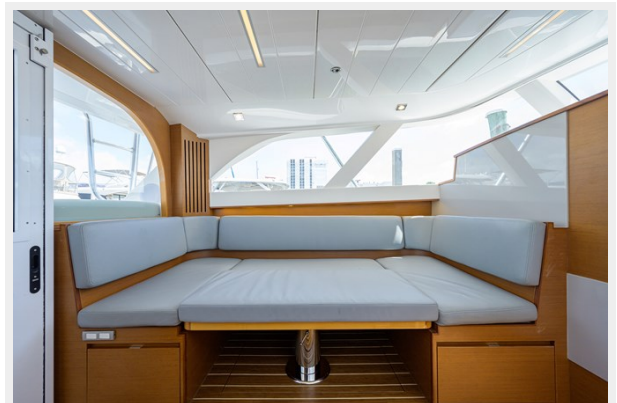
35\_bertram\_no\_reserve\_salon\_6



35\_bertram\_no\_reserve\_salon\_7



35\_bertram\_no\_reserve\_salon\_8





35\_bertram\_no\_reserve\_salon\_9



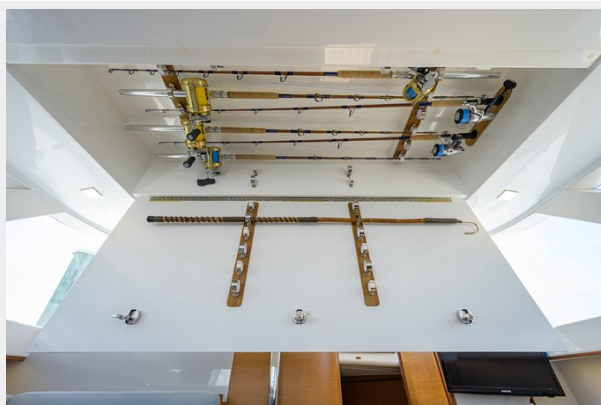
35\_bertram\_no\_reserve\_salon\_10



35\_bertram\_no\_reserve\_galley\_1



35\_bertram\_no\_reserve\_salon\_11



35\_bertram\_no\_reserve\_galley\_2



35\_bertram\_no\_reserve\_galley\_3



35\_bertram\_no\_reserve\_stateroom\_1



35\_bertram\_no\_reserve\_galley\_4



35\_bertram\_no\_reserve\_stateroom\_2



35\_bertram\_no\_reserve\_stateroom\_3



35\_bertram\_no\_reserve\_head\_1



35\_bertram\_no\_reserve\_stateroom\_4



35\_bertram\_no\_reserve\_head\_2

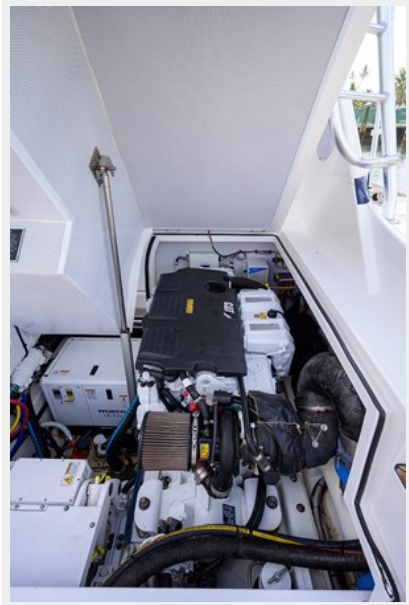


35\_bertram\_no\_reserve\_engines\_1

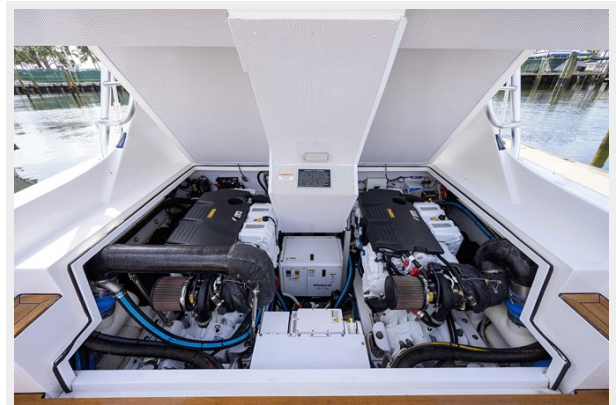




35\_bertram\_no\_reserve\_engines\_2



35\_bertram\_no\_reserve\_engines\_3



35\_bertram\_no\_reserve\_engines\_5



35\_bertram\_no\_reserve\_engines\_4



### 35\_bertram\_no\_reserve\_engines\_6





# CONTACTS

---

Andrey Shestakov, leading yacht broker of the sales department of Shestakov Yacht Sales Inc. Shestakov Yacht Sales Inc., the official representative of the Miami/Fort Lauderdale FL headquarters.

## Contact details

---

Email: [andrey@shestakovyachtsales.com](mailto:andrey@shestakovyachtsales.com)

Web: [shestakovyachtsales.com/en/](http://shestakovyachtsales.com/en/)

## Telephones

---

USA: +1(954)274-4435

## Office hours

---

Monday – Saturday: **9:00 - 21:00** EDT

Sunday: **closed**

## Address

---



Harbour Towne Marina, 850 NE 3rd St,  
STE 213, Dania, FL 33004