

YOU TOP — AZIMUT YACHTS



Builder: AZIMUT YACHTS

Year Built: 2006

Model: Motor Yacht

Price: PRICE ON APPLICATION

Location: Italy

LOA: 65' 7" (19.98mm)

Beam: 17.06

Max Draft: 5' (1.5mm)

Cruise Speed: 31 Knots Kts. (36 MPH)

Max Speed: 37 Knots Kts. (43 MPH)

Our experienced yacht broker, Andrey Shestakov, will help you choose and buy a yacht that best suits your needs **YOU TOP — AZIMUT YACHTS** from our catalogue. Presently, at **Shestakov Yacht Sales Inc.**, we have a wide variety of yachts available on our sale's list. We also work in close contact with all the big **yacht manufacturers** from all over the world.

If you would like to buy a yacht **YOU TOP — AZIMUT YACHTS** or would like help answering any questions concerning purchasing, selling or chartering a yacht, please call **+1(954)274-4435**

TABLE OF CONTENTS

TABLE OF CONTENTS	2
SPECIFICATIONS	5
Overview	5
Basic Information	5
Dimensions	5
Speed, Capacities and Weight	6
Accommodations	6
Hull and Deck Information	6
Engine Information	6
PHOTOS	7
20220517_121728 (FILEminimizer)	7
20220517_121735 (FILEminimizer)	7
20220517_121746 (FILEminimizer)	7
20220517_121900 (FILEminimizer)	7
20220517_122450 (FILEminimizer)	7
20220517_121538 (FILEminimizer)	7
20220517_121839 (FILEminimizer)	8
20220517_121848 (FILEminimizer)	8
20220517_121555 (FILEminimizer)	8
20220517_122422 (FILEminimizer)	8
20220517_122242 (FILEminimizer)	8
20220517_122304 (FILEminimizer)	8
20220517_122204 (FILEminimizer)	9
20220517_122224 (FILEminimizer)	9
20220517_122341 (FILEminimizer)	9
20220517_120849 (FILEminimizer)	9
20220517_120913 (FILEminimizer)	9
20220517_120321 (FILEminimizer)	9

20220517_120348 (FILEminimizer)	10
20220517_120427 (FILEminimizer)	10
20220517_120605 (FILEminimizer)	10
20220517_120244 (FILEminimizer)	10
20220517_120515 (FILEminimizer)	10
20220517_120544 (FILEminimizer)	10
20220517_120227 (FILEminimizer)	11
20220517_120204 (FILEminimizer)	11
20220517_115121 (FILEminimizer)	11
20220517_115146 (FILEminimizer)	11
20220517_115154 (FILEminimizer)	11
20220517_115243 (FILEminimizer)	11
20220517_115234 (FILEminimizer)	12
20220517_115313 (FILEminimizer)	12
20220517_115323 (FILEminimizer)	12
20220517_115405 (FILEminimizer)	12
20220517_115822 (FILEminimizer)	12
20220517_115835 (FILEminimizer)	12
20220517_115920 (FILEminimizer)	13
20220517_115844 (FILEminimizer)	13
20220517_115940 (FILEminimizer)	13
20220517_115956 (FILEminimizer)	13
20220517_120041 (FILEminimizer)	14
20220517_120049 (FILEminimizer)	14
20220517_121125 (FILEminimizer)	14
20220517_121143 (FILEminimizer)	14
20220517_121146 (FILEminimizer)	14
20220517_121049 (FILEminimizer)	14
20220517_121114 (FILEminimizer)	15

20220517_121158 (FILEminimizer)	15
20220517_122553 (FILEminimizer)	15
CONTACTS	16
Contact details	16
Telephones	16
Office hours	16
Address	16

SPECIFICATIONS

Overview

Year of build 2006, model 2007, hull #73 great general condition and with crew on board for the whole year - Vat paid.

General refitting during 2018/2019:

Grey hull sides repainting and full polishing – new inside & outside tapestry – teak treatment and new white inlay – new Pirelli Jet Tender – electronic equipment replaced with new Raymarine, new Flir and cables – new batteries and windlass – extraordinary Man service (heat exchangers, turbo and injectors) – exhaust rebuilt in inox & fiberglass – new generator control unit - propellers balancing & bushes replacement – new A/C pumps and control digital displays – OpacMare hydraulic system overhauling with additional second pump – twin Gianneschi fresh water pumps – new cockpit refrigerator and dashboard panel.

August 2020:

new leather pilot & copilot seat, hull stripping, full polishing, full engines and generator service.

In 2021/2022:

crew cabin refitting, engine room cleaning and repainting, all interior woods treatment and polishing.

Basic Information

Category: Motor Yacht

Sub Category: Motor Yacht

Model Year: 2007

Year Built: 2006

Refit Type: FULLY REFITTED

Country: Italy

Dimensions

LOA: 65' 7" (19.98mm)

Beam: 17.06

Max Draft: 5' (1.5mm)

Speed, Capacities and Weight

Cruise Speed: 31 Knots Kts. (36 MPH) **Max Speed:** 37 Knots Kts. (43 MPH)

Water Capacity: 950 Gallons

Holding Tank: 47.55 Gal Gallons

Fuel Capacity: 845.35 Gal Gallons

Fuel Consumption: 79.25 Gal Gallons

Accommodations

Total Cabins: 3

Total Berths: 6

Sleeps: 6

Total Heads: 3

Crew Cabin: 1

Crew Berths: 1

Crew Heads: 1

Hull and Deck Information

Hull Material: Fiberglass

Deck Material: Teak

Hull Configuration: Deep Vee

Hull Color: METALLIC GREY

Engine Information

Engines: 2

Manufacturer: MAN

Engine Type: Inboard

Fuel Type: Diesel

PHOTOS

20220517_121728 (FILEminimizer)



20220517_121735 (FILEminimizer)



20220517_121746 (FILEminimizer)



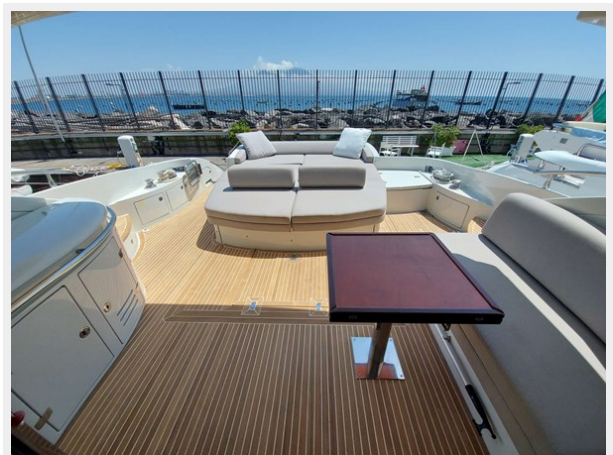
20220517_121900 (FILEminimizer)



20220517_122450 (FILEminimizer)



20220517_121538 (FILEminimizer)



20220517_121839 (FILEminimizer)



20220517_121848 (FILEminimizer)



20220517_121555 (FILEminimizer)



20220517_122422 (FILEminimizer)



20220517_122242 (FILEminimizer)



20220517_122304 (FILEminimizer)



20220517_122204 (FILEminimizer)



20220517_122224 (FILEminimizer)



20220517_122341 (FILEminimizer)



20220517_120849 (FILEminimizer)



20220517_120913 (FILEminimizer)



20220517_120321 (FILEminimizer)



20220517_120348 (FILEminimizer)



20220517_120427 (FILEminimizer)



20220517_120605 (FILEminimizer)



20220517_120244 (FILEminimizer)



20220517_120515 (FILEminimizer)



20220517_120544 (FILEminimizer)



20220517_120227 (FILEminimizer)



20220517_120204 (FILEminimizer)



20220517_115121 (FILEminimizer)



20220517_115146 (FILEminimizer)



20220517_115154 (FILEminimizer)



20220517_115243 (FILEminimizer)



20220517_115234 (FILEminimizer)



20220517_115313 (FILEminimizer)



20220517_115323 (FILEminimizer)



20220517_115405 (FILEminimizer)



20220517_115822 (FILEminimizer)



20220517_115835 (FILEminimizer)



20220517_115920 (FILEminimizer)

20220517_115844 (FILEminimizer)



20220517_115940 (FILEminimizer)

20220517_115956 (FILEminimizer)



20220517_120041 (FILEminimizer)



20220517_120049 (FILEminimizer)



20220517_121125 (FILEminimizer)



20220517_121143 (FILEminimizer)



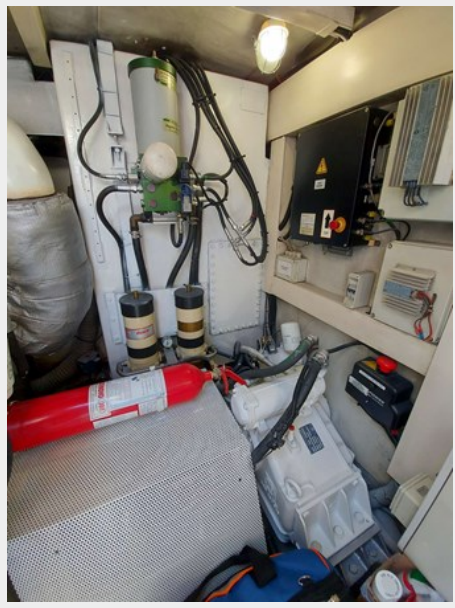
20220517_121146 (FILEminimizer)



20220517_121049 (FILEminimizer)



20220517_121114 (FILEminimizer)



20220517_121158 (FILEminimizer)



20220517_122553 (FILEminimizer)



CONTACTS

Andrey Shestakov, leading yacht broker of the sales department of Shestakov Yacht Sales Inc. Shestakov Yacht Sales Inc., the official representative of the Miami/Fort Lauderdale FL headquarters.

Contact details

Email: **andrey@shestakovyachtsales.com**

Web: shestakovyachtsales.com/en/

Telephones

USA: **+1(954)274-4435**

Office hours

Monday – Saturday: **9:00 - 21:00** EDT

Sunday: **closed**

Address



Harbour Towne Marina, 850 NE 3rd St, STE 213, Dania, FL 33004