

PURA VIDA — FORMULA



Builder: FORMULA

Year Built: 2008

Model: Cruising Yacht

Price: PRICE ON APPLICATION

Location: United States

LOA: 40' 1" (12.22mm)

Beam: 12.66

Min Draft: 2' 11" (0.89mm)

Max Draft: 2' 11" (0.89mm)

Our experienced yacht broker, Andrey Shestakov, will help you choose and buy a yacht that best suits your needs **PURA VIDA — FORMULA** from our catalogue. Presently, at Shestakov Yacht Sales Inc., we have a wide variety of yachts available on our sale's list. We also work in close contact with all the big yacht manufacturers from all over the world.

If you would like to buy a yacht **PURA VIDA — FORMULA** or would like help answering any questions concerning purchasing, selling or chartering a yacht, please call **+1(954)274-4435**

TABLE OF CONTENTS

TABLE OF CONTENTS	2
SPECIFICATIONS	4
Overview	4
Basic Information	4
Dimensions	4
Speed, Capacities and Weight	4
Accommodations	4
Hull and Deck Information	5
Engine Information	5
PHOTOS	6
C	6
B	6
D	6
E	6
F	7
G	7
H	7
I	7
K	8
J	8
N	8
L	8
O	8
O1	8
o2	9
P	9
R	9
Q	9

S	9
T	9
T1	10
U	10
V	10
W	10
X	10
Y	10
Y1	11
Y2	11
CONTACTS	12
Contact details	12
Telephones	12
Office hours	12
Address	12

SPECIFICATIONS

Overview

2008 40' Formula PC -- Professionally Maintained Vessel by Authorized Formula Service Company & Volvo Penta Tech -- Only 870 Hours on Twin Volvo IPS 500 Diesels

Loaded with Upgrades: Raymarine AXIOM Electronics, Hydraulic Swim Platform, Updated Joystick Control, New Aft Enclosure + Much More!!

"PURA VIDA" is a Turn-Key Formula & is Ready for her Next Adventure -- Call Listing Broker for a Showing Today

Basic Information

Category: Cruising Yacht

Sub Category: Express

Model Year: 2008

Year Built: 2008

Country: United States

Dimensions

LOA: 40' 1" (12.22mm)

Beam: 12.66

Min Draft: 2' 11" (0.89mm)

Max Draft: 2' 11" (0.89mm)

Speed, Capacities and Weight

Water Capacity: 55 Gallons

Holding Tank: 57 Gal Gallons

Fuel Capacity: 250 Gal Gallons

Accommodations

Total Cabins: 2

Total Heads: 1

Hull and Deck Information

Hull Material: Fiberglass

Hull Color: BLUE

Engine Information

Engines: 2

Manufacturer: Volvo

Engine Type: Inboard

Fuel Type: Diesel

PHOTOS

B



C



D



E



F



G



H



I



J



K



L



N



O



O1



o2



P



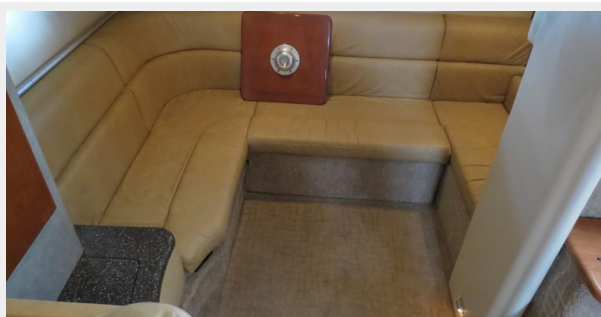
Q



R



S



T



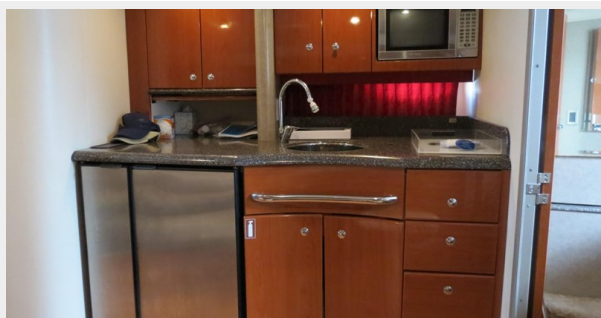
T1



U



V



W



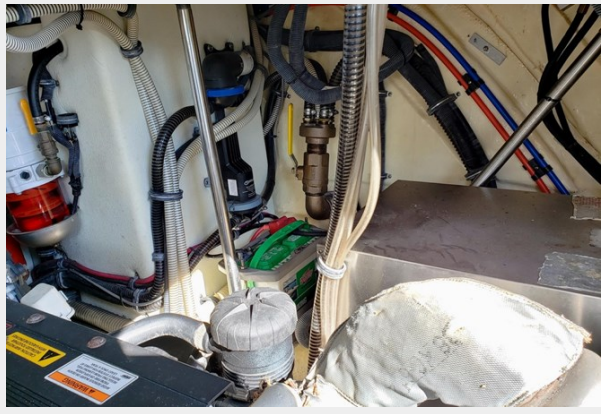
X



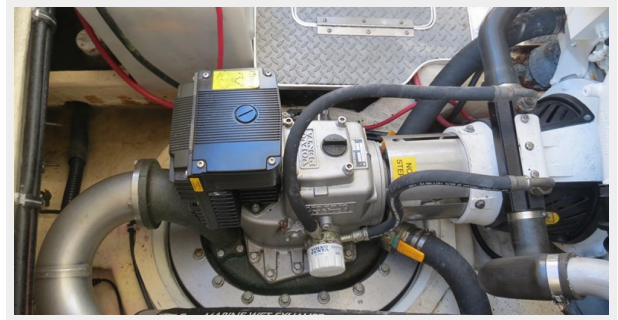
Y



Y1



Y2



CONTACTS

Andrey Shestakov, leading yacht broker of the sales department of Shestakov Yacht Sales Inc. Shestakov Yacht Sales Inc., the official representative of the Miami/Fort Lauderdale FL headquarters.

Contact details

Email: andrey@shestakovyachtsales.com

Web: shestakovyachtsales.com/en/

Telephones

USA: +1(954)274-4435

Office hours

Monday – Saturday: **9:00 - 21:00** EDT

Sunday: **closed**

Address



Harbour Towne Marina, 850 NE 3rd St,
STE 213, Dania, FL 33004