

## FINE-A-LEE — HUNTER



**Builder:** HUNTER

**LOA:** 46' (14.02m)

**Year Built:** 2004

**Model:** Sloop

**Price:** PRICE ON APPLICATION

Our experienced yacht broker, Andrey Shestakov, will help you choose and buy a yacht that best suits your needs **FINE-A-LEE — HUNTER** from our catalogue. Presently, at Shestakov Yacht Sales Inc., we have a wide variety of yachts available on our sale's list. We also work in close contact with all the big yacht manufacturers from all over the world.

If you would like to buy a yacht **FINE-A-LEE — HUNTER** or would like help answering any questions concerning purchasing, selling or chartering a yacht, please call **+1(954)274-4435**

---

# TABLE OF CONTENTS

---

TABLE OF CONTENTS	2
SPECIFICATIONS	4
Overview	4
Basic Information	4
Dimensions	4
Accommodations	5
Hull and Deck Information	5
Engine Information	5
PHOTOS	6
8428706_0_020820221626_2	6
8428706_0_020820221626_1	6
8428706_0_020820221626_3	6
8428706_0_020820221626_5	6
8428706_0_020820221627_9	7
8428706_0_020820221627_10	7
8428706_0_020820221627_15	7
8428706_0_020820221627_16	7
8428706_0_020820221627_18	8
8428706_0_020820221627_17	8
8428706_0_020820221627_21	8
8428706_0_020820221627_20	8
8428706_0_020820221627_24	9
8428706_0_020820221628_33	9
8428706_0_020820221628_39	9
CONTACTS	10
Contact details	10
Telephones	10
Office hours	10

---

Address

10

---

# SPECIFICATIONS

---

## Overview

---

FINE-A-LEE stands out from all other Hunters. With only 2 owners, FINE-A-LEE has been provided unparalleled care since new. FINE-A-LEE was the Annapolis Boat Show display model from 2004 thru 2006. FINE-A-LEE is the best of the older 460 line and the upgraded features of later models. Her air-conditioned interior has secure handrails on both sides of the companionway as well as sculptured steps to prevent slipping while heeling. The galley comes with a spacious top & front load refrigerator and generous freezer. The owners' stateroom has double doors that allow better air circulation and a "Classy" entry. FINE-A-LEE upgrades include but not limited to - Electric freshwater flush toilets in both heads, Ocean Air hatch shades and screens, updated helm and cockpit table, folding helm that stores overhead in the cockpit when docked, and an engine and generator compartment blower that helps to exhaust the heat from the aft cabins of the boat. FINE-A-LEE was used seasonally in the Chesapeake Bay until two years ago when purchased by the current owner. She was stored on land and under full cover each winter and recommissioned professionally each spring when returned to her dock. Some of what makes FINE-A-LEE a sailboat for you to consider - New Grey Sunbrella Marine Canvas: \*Dodger, \*Hatch Covers, \*Felt Lined Isinglass Covers, \*Port Light Covers, \*Helm Covers, \*Cockpit Table Cover, \*Outboard Cover, \*Grill Cover & \*Deck Water & Fuel Can Covers. NEW: \*All Isinglass, \*Sunbrella Cockpit Cushions, \*Interior Curtains, \*Interior Cushions & Upholstery, \*Smart HD TV, \*Bluetooth Bose Stereo, \*Handheld VHF Radio, \*Transom Seals, \*Hypalon Tubing & Cover for the Walker Bay Dinghy, \*(2) AGM House Batteries, \*(1) Start Battery, \*66 lb. Polished Stainless Steel Bruce Style Anchor, \*200 ft of Additional Chain & Anchor Swivel. FINE-A-LEE comes with everything listed, plus a long list of spare parts, fuel and water cans, life jackets, dinghy & outboard, EPIRB, original Hunter dish set and bedding, summer deck shades, grill, additional anchors, and several other items left on board for the new owners!

## Basic Information

---

**Category:** Sloop

**Model Year:** 2004

**Year Built:** 2004

## Dimensions

---

**LOA:** 46' (14.02mm)

---

## Accommodations

---

**Total Cabins:** 2

---

## Hull and Deck Information

---

**Hull Material:** Fiberglass

---

## Engine Information

---

**Engines:** 1

**Manufacturer:** Yanmar

# PHOTOS

8428706\_0\_020820221626\_1



8428706\_0\_020820221626\_2



8428706\_0\_020820221626\_3



8428706\_0\_020820221626\_5





8428706\_0\_020820221627\_9



8428706\_0\_020820221627\_10



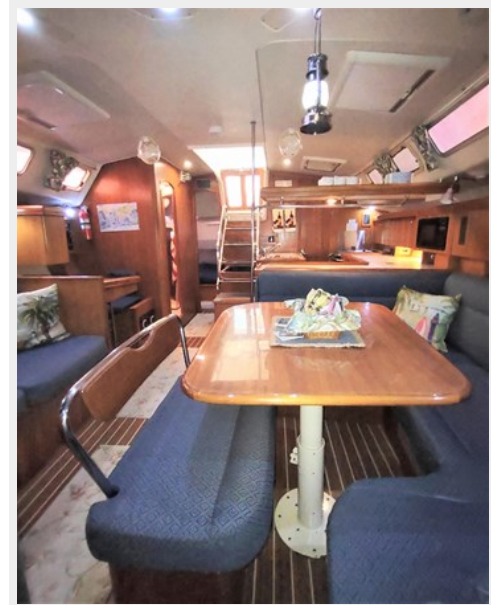
8428706\_0\_020820221627\_15



8428706\_0\_020820221627\_16



8428706\_0\_020820221627\_18



8428706\_0\_020820221627\_17



8428706\_0\_020820221627\_21



8428706\_0\_020820221627\_20





8428706\_0\_020820221627\_24



8428706\_0\_020820221628\_33



8428706\_0\_020820221628\_39



# CONTACTS

---

Andrey Shestakov, leading yacht broker of the sales department of Shestakov Yacht Sales Inc. Shestakov Yacht Sales Inc., the official representative of the Miami/Fort Lauderdale FL headquarters.

## Contact details

---

Email: [andrey@shestakovyachtsales.com](mailto:andrey@shestakovyachtsales.com)

Web: [shestakovyachtsales.com/en/](http://shestakovyachtsales.com/en/)

## Telephones

---

USA: +1(954)274-4435

## Office hours

---

Monday – Saturday: **9:00 - 21:00** EDT

Sunday: **closed**

## Address

---



Harbour Towne Marina, 850 NE 3rd St,  
STE 213, Dania, FL 33004