

PRINCESS F70 — PRINCESS YACHTS



Builder: PRINCESS YACHTS

Year Built: 2020

Model: Motor Yacht

Price: PRICE ON APPLICATION

Location: United Arab Emirates

LOA: 69' 9" (21.25mm)

Beam: 17.65

Max Draft: 5' 3" (1.58mm)

Max Speed: 36 Knots Kts. (41 MPH)

Our experienced yacht broker, Andrey Shestakov, will help you choose and buy a yacht that best suits your needs **Princess F70 — PRINCESS YACHTS** from our catalogue. Presently, at Shestakov Yacht Sales Inc., we have a wide variety of yachts available on our sale's list. We also work in close contact with all the big yacht manufacturers from all over the world.

If you would like to buy a yacht **Princess F70 — PRINCESS YACHTS** or would like help answering any questions concerning purchasing, selling or chartering a yacht, please call **+1(954)274-4435**

TABLE OF CONTENTS

TABLE OF CONTENTS	2
SPECIFICATIONS	3
Overview	3
Basic Information	3
Dimensions	3
Speed, Capacities and Weight	3
Accommodations	4
Hull and Deck Information	4
Engine Information	4
PHOTOS	5
CONTACTS	9
Contact details	9
Telephones	9
Office hours	9
Address	9

SPECIFICATIONS

Overview

Princess F70 Flybridge with full of options including hard-top, Seakeeper stabilizers, bow and stern thruster.

Her generous, 26.58m² flybridge accommodates a large U-shaped dining area, served by a fully equipped wetbar, aft sunpad and forward seating area adjacent to the helm. The social layout of her main deck features an aft galley arrangement which opens fully to the cockpit and a walkthrough foredeck area with additional sunbathing and seating areas.

Out at sea, her performance feels light and responsive all the way up to speeds in excess of 36 knots. The full beam master suite has a private access stairway, whilst the forward stateroom boasts a large double bed. Two further guest cabins and crew cabin feature 2 single beds.

Basic Information

Category: Motor Yacht

Model Year: 2020

Year Built: 2020

Country: United Arab Emirates

Dimensions

LOA: 69' 9" (21.25m)

Beam: 17.65

Max Draft: 5' 3" (1.58m)

Speed, Capacities and Weight

Max Speed: 36 Knots Kts. (41 MPH)

Water Capacity: 909 Gallons

Fuel Capacity: 1083.11 Gal Gallons

Accommodations

Total Cabins: 4

Sleeps: 8

Crew Cabin: 2

Crew Berths: 1

Hull and Deck Information

Hull Material: GRP

Deck Material: Teak

Hull Color: White

Engine Information

Engines: 2

Manufacturer: MAN

Engine Type: Inboard

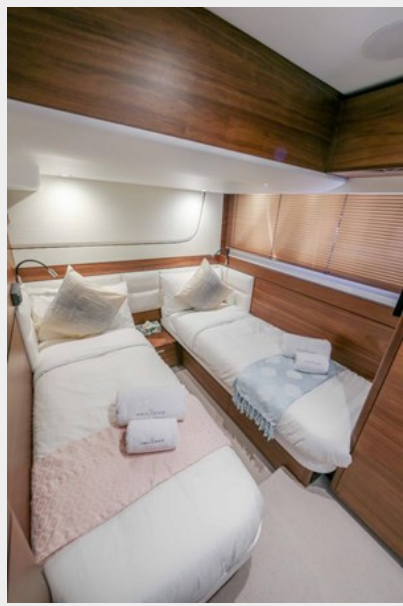
Fuel Type: Diesel

PHOTOS









CONTACTS

Andrey Shestakov, leading yacht broker of the sales department of Shestakov Yacht Sales Inc. Shestakov Yacht Sales Inc., the official representative of the Miami/Fort Lauderdale FL headquarters.

Contact details

Email: andrey@shestakovyachtsales.com

Web: shestakovyachtsales.com/en/

Telephones

USA: +1(954)274-4435

Office hours

Monday – Saturday: **9:00 - 21:00** EDT

Sunday: **closed**

Address



Harbour Towne Marina, 850 NE 3rd St,
STE 213, Dania, FL 33004