

## FULL CERTIFICATE — SEA RAY



**Builder:** SEA RAY

**Year Built:** 2002

**Model:** cruiser

**Price:** PRICE ON APPLICATION

**Location:** United States

**LOA:** 31' 4" (9.55mm)

**Beam:** 10.5

**Max Draft:** 2' 10" (0.86mm)

**Cruise Speed:** 21 Knots Kts. (24 MPH)

**Max Speed:** 35 Knots Kts. (40 MPH)

Our experienced yacht broker, Andrey Shestakov, will help you choose and buy a yacht that best suits your needs **Full Certificate — SEA RAY** from our catalogue. Presently, at Shestakov Yacht Sales Inc., we have a wide variety of yachts available on our sale's list. We also work in close contact with all the big yacht manufacturers from all over the world.

If you would like to buy a yacht **Full Certificate — SEA RAY** or would like help answering any questions concerning purchasing, selling or chartering a yacht, please call **+1(954)274-4435**

---

# TABLE OF CONTENTS

---

TABLE OF CONTENTS	2
SPECIFICATIONS	4
Overview	4
Basic Information	4
Dimensions	4
Speed, Capacities and Weight	4
Accommodations	4
Hull and Deck Information	5
Engine Information	5
PHOTOS	6
2	6
3	6
4	6
5	6
6	6
7	6
8	7
9	7
10	7
11	7
12	7
13	7
14	8
15	8
16	8
17	8
18	8
19	8

---

20	9
21	9
22	9
23	9
24	9
25	9
<b>CONTACTS</b>	<b>10</b>
Contact details	10
Telephones	10
Office hours	10
Address	10

---

# SPECIFICATIONS

---

## Overview

---

This **Sea Ray 290 Amberjack** provides the comforts of home while being a great boat for fishing. It has an open layout and spacious seating with ample storage as well as the wide gunwales and generous freeboard desired for sport fishing, complete with live well.

## Basic Information

---

**Category:** cruiser

**Sub Category:** Express

**Model Year:** 2002

**Year Built:** 2002

**Country:** United States

## Dimensions

---

**LOA:** 31' 4" (9.55mm)

**LWL:** 29' (8.84mm)

**Beam:** 10.5

**Max Draft:** 2' 10" (0.86mm)

## Speed, Capacities and Weight

---

**Cruise Speed:** 21 Knots Kts. (24 MPH)

**Max Speed:** 35 Knots Kts. (40 MPH)

**Water Capacity:** 30 Gallons

**Holding Tank:** 28 Gal Gallons

**Fuel Capacity:** 250 Gal Gallons

## Accommodations

---

**Total Cabins:** 2

**Total Heads:** 1

---

## Hull and Deck Information

---

**Hull Material:** Fiberglass

---

## Engine Information

---

**Engines:** 3

**Manufacturer:** Mercruiser

**Engine Type:** I/O

**Fuel Type:** Gas/Petrol

# PHOTOS

2



3



4



5



6



7



8



9



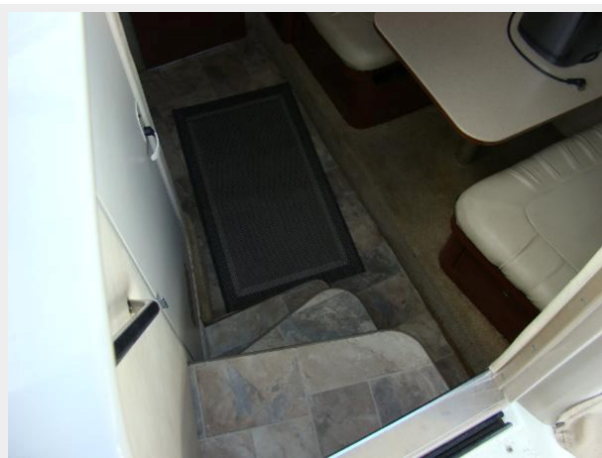
10



11



12



13



14



15



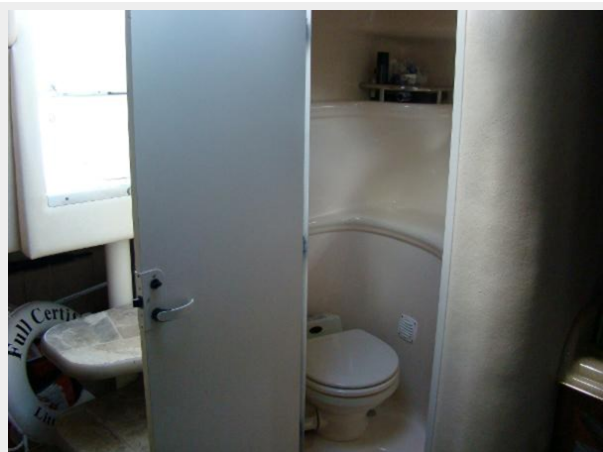
16



17



18



19





20



21



22



23



24



25



# CONTACTS

---

Andrey Shestakov, leading yacht broker of the sales department of Shestakov Yacht Sales Inc. Shestakov Yacht Sales Inc., the official representative of the Miami/Fort Lauderdale FL headquarters.

## Contact details

---

Email: [andrey@shestakovyachtsales.com](mailto:andrey@shestakovyachtsales.com)

Web: [shestakovyachtsales.com/en/](http://shestakovyachtsales.com/en/)

## Telephones

---

USA: +1(954)274-4435

## Office hours

---

Monday – Saturday: **9:00 - 21:00** EDT

Sunday: **closed**

## Address

---



Harbour Towne Marina, 850 NE 3rd St,  
STE 213, Dania, FL 33004