

KARENA — BERTRAM / DIASHIP



Builder: BERTRAM / DIASHIP

Year Built: 2004

Model: Sport Fisherman

Price: PRICE ON APPLICATION

Location: United States

LOA: 55' (16.76mm)

Beam: 17.41

Max Draft: 5' (1.52mm)

Cruise Speed: 30 Knots Kts. (35 MPH)

Max Speed: 40 Knots Kts. (46 MPH)

Our experienced yacht broker, Andrey Shestakov, will help you choose and buy a yacht that best suits your needs **Karena — BERTRAM / DIASHIP** from our catalogue. Presently, at Shestakov Yacht Sales Inc., we have a wide variety of yachts available on our sale's list. We also work in close contact with all the big yacht manufacturers from all over the world.

If you would like to buy a yacht **Karena — BERTRAM / DIASHIP** or would like help answering any questions concerning purchasing, selling or chartering a yacht, please call **+1(954)274-4435**

TABLE OF CONTENTS

TABLE OF CONTENTS	2
SPECIFICATIONS	3
Overview	3
Basic Information	3
Dimensions	4
Speed, Capacities and Weight	4
Accommodations	4
Hull and Deck Information	4
Engine Information	4
PHOTOS	5
CONTACTS	9
Contact details	9
Telephones	9
Office hours	9
Address	9

SPECIFICATIONS

Overview

Recently purchased ,owners plans have changed. This 3 stateroom 2 head layout has been captain maintained meticulously. Serena comes with the upgraded 1300hp engine package (1850hrs) which gives her a top speed of 40 knots and easy 30 knot cruise.

Here upgraded features include:

- Rare 1300 HP engine package.
- 17.5 KW Onan generator new 2018
- New Veem props 2020
- Water maker
- Ice chipper
- Custom Garmin 8617 electronics package with 3KW high CHIRP transducer.
- Bow Thruster
- Hydraulic davit 1200lbs
- Cockpit table w/snap out rocket launcher
- Custom pipe welders cockpit sunshade
- Custom JL audio system. (\$40k)
- Complete interior refit 2018, all fabrics, upholstery and carpet.
- Mans service Nov 2021.
- Led lighting throughout

Boats needs nothing, a true 9 for her year.

Basic Information

Category: Sport Fisherman

Model Year: 2004

Year Built: 2004

Country: United States

Dimensions

LOA: 55' (16.76mm)

Beam: 17.41

Max Draft: 5' (1.52mm)

Speed, Capacities and Weight

Cruise Speed: 30 Knots Kts. (35 MPH)

Max Speed: 40 Knots Kts. (46 MPH)

Water Capacity: 185 Gallons

Fuel Capacity: 1040 Gal Gallons

Accommodations

Total Cabins: 3

Total Heads: 2

Hull and Deck Information

Hull Material: Fiberglass

Engine Information

Engines: 2

Manufacturer: MAN

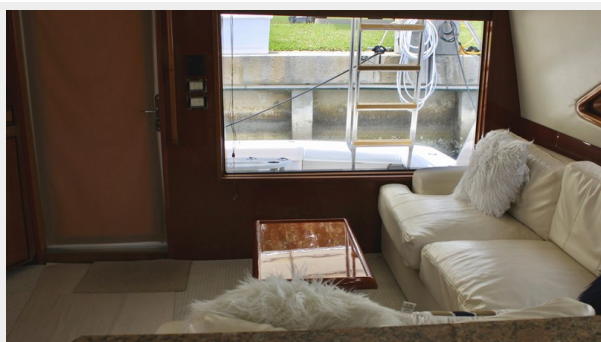
Engine Type: Inboard

Fuel Type: Diesel

PHOTOS









CONTACTS

Andrey Shestakov, leading yacht broker of the sales department of Shestakov Yacht Sales Inc. Shestakov Yacht Sales Inc., the official representative of the Miami/Fort Lauderdale FL headquarters.

Contact details

Email: andrey@shestakovyachtsales.com

Web: shestakovyachtsales.com/en/

Telephones

USA: +1(954)274-4435

Office hours

Monday – Saturday: **9:00 - 21:00** EDT

Sunday: **closed**

Address



Harbour Towne Marina, 850 NE 3rd St,
STE 213, Dania, FL 33004