

## KNOTTY NURSE — SEA RAY



**Builder:** SEA RAY

**Year Built:** 2002

**Model:** cruiser

**Price:** PRICE ON APPLICATION

**Location:** United States

**LOA:** 31' 1" (9.47m)

**Beam:** 9.41

**Min Draft:** 1' 10" (0.56m)

**Max Draft:** 3' 3" (0.99m)

**Cruise Speed:** 24 Knots Kts. (28 MPH)

**Max Speed:** 40 Knots Kts. (46 MPH)

Our experienced yacht broker, Andrey Shestakov, will help you choose and buy a yacht that best suits your needs **Knotty Nurse — SEA RAY** from our catalogue. Presently, at Shestakov Yacht Sales Inc., we have a wide variety of yachts available on our sale's list. We also work in close contact with all the big yacht manufacturers from all over the world.

If you would like to buy a yacht **Knotty Nurse — SEA RAY** or would like help answering any questions concerning purchasing, selling or chartering a yacht, please call **+1(954)274-4435**

# TABLE OF CONTENTS

TABLE OF CONTENTS	2
SPECIFICATIONS	4
Overview	4
Basic Information	4
Dimensions	4
Speed, Capacities and Weight	4
Accommodations	5
Hull and Deck Information	5
Engine Information	5
PHOTOS	6
2	6
3	6
4	6
5	6
6	6
7	6
8	7
9	7
10	7
11	7
12	7
13	7
14	8
15	8
16	8
17	8
18	8
19	8

20	9
21	9
22	9
23	9
24	9
25	9
26	10
27	10
28	10
29	10
30	10
31	10
32	11
33	11
34	11
35	11
DSC04124	11
DSC04125	11
DSC04126	12
DSC04127	12
DSC04128	12
CONTACTS	13
Contact details	13
Telephones	13
Office hours	13
Address	13

---

# SPECIFICATIONS

---

## Overview

---

The sleek, contemporary lines of the 280 Sundancer make it a standout in any marina, but this express cruiser is not meant to sit at the dock. A dynamic deep V-hull provides a smooth ride in any conditions, while the stylish interior promises comfortable overnight stays. With twin 5.0 Mercury MerCruiser Gasoline Engines (with sterndrives), the 280 Sundancer will cruise at 24–26 knots @3500 RPM (and about 40 knots top-speed @ 4400-4800. Also included is a triple axle trailer. This boat has been a fresh water boat it's whole life. call for a showing today

## Basic Information

---

**Category:** cruiser

**Sub Category:** Express

**Model Year:** 2002

**Year Built:** 2002

**Country:** United States

## Dimensions

---

**LOA:** 31' 1" (9.47mm)

**Beam:** 9.41

**Min Draft:** 1' 10" (0.56mm)

**Max Draft:** 3' 3" (0.99mm)

## Speed, Capacities and Weight

---

**Cruise Speed:** 24 Knots Kts. (28 MPH)

**Max Speed:** 40 Knots Kts. (46 MPH)

**Water Capacity:** 28 Gallons

**Holding Tank:** 28 Gal Gallons

**Fuel Capacity:** 100 Gal Gallons

---

## Accommodations

---

**Total Cabins:** 1

**Total Heads:** 1

---

## Hull and Deck Information

---

**Hull Material:** Fiberglass

---

## Engine Information

---

**Engines:** 2

**Manufacturer:** Mercruiser

**Engine Type:** I/O

**Fuel Type:** Gas/Petrol

# PHOTOS

2



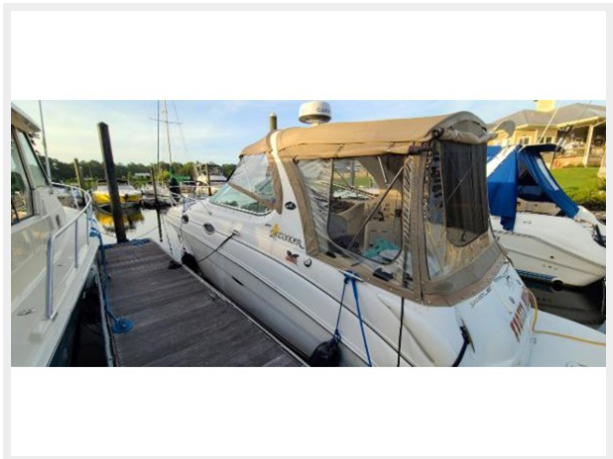
3



4



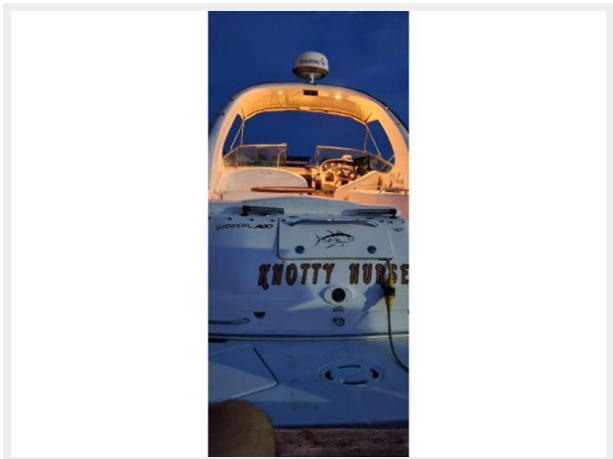
5



6



7





8



9



10



11



12



13





14



15



16



17



18



19





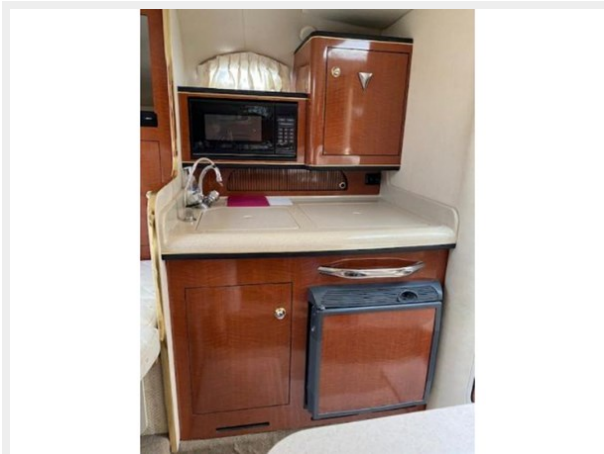
20



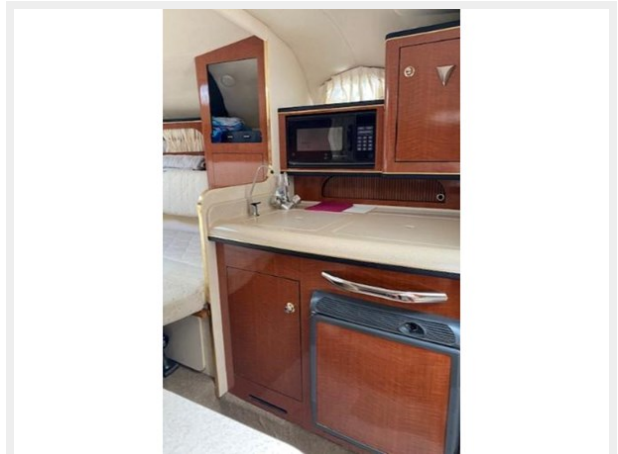
21



22



23



24



25



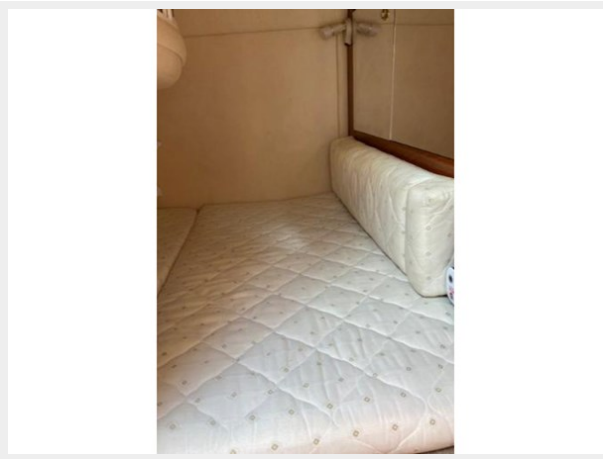
26



27



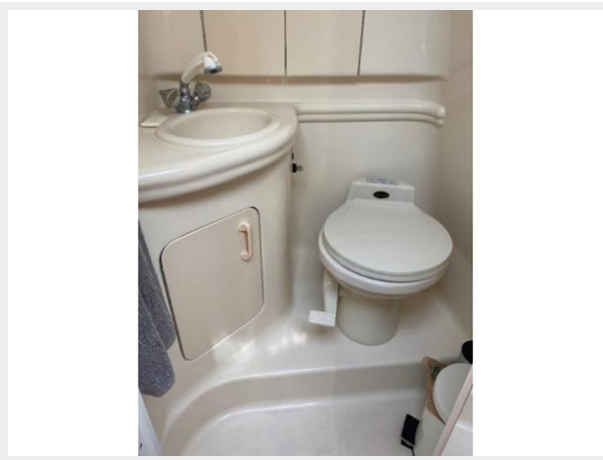
28



29



30



31



32



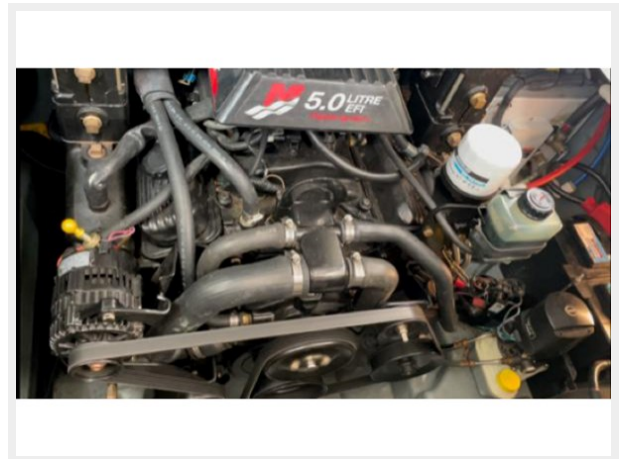
33



34



35



DSC04124



DSC04125





**DSC04126**



**DSC04127**



**DSC04128**





---

# CONTACTS

---

Andrey Shestakov, leading yacht broker of the sales department of Shestakov Yacht Sales Inc. Shestakov Yacht Sales Inc., the official representative of the Miami/Fort Lauderdale FL headquarters.

---

## Contact details

---

Email: [andrey@shestakovyachtsales.com](mailto:andrey@shestakovyachtsales.com)

Web: [shestakovyachtsales.com/en/](http://shestakovyachtsales.com/en/)

---

## Telephones

---

USA: +1(954)274-4435

---

## Office hours

---

Monday – Saturday: **9:00 - 21:00** EDT

Sunday: **closed**

---

## Address

---



Harbour Towne Marina, 850 NE 3rd St,  
STE 213, Dania, FL 33004