

# 1980 GIBSON 12 X 42 EXECUTIVE NLST — GIBSON



**Builder:** GIBSON

**Year Built:** 1980

**Model:** houseboat

**Price:** PRICE ON APPLICATION

**Location:** United States

**LOA:** 42' (12.8mm)

**Beam:** 12

**Max Draft:** 3' (0.91mm)

Our experienced yacht broker, Andrey Shestakov, will help you choose and buy a yacht that best suits your needs 1980 Gibson 12 x 42 Executive NLST — GIBSON from our catalogue. Presently, at Shestakov Yacht Sales Inc., we have a wide variety of yachts available on our sale's list. We also work in close contact with all the big yacht manufacturers from all over the world.

If you would like to buy a yacht 1980 Gibson 12 x 42 Executive NLST — GIBSON or would like help answering any questions concerning purchasing, selling or chartering a yacht, please call +1(954)274-4435

# TABLE OF CONTENTS

TABLE OF CONTENTS	2
SPECIFICATIONS	5
Basic Information	5
Dimensions	5
Speed, Capacities and Weight	5
Accommodations	5
Hull and Deck Information	5
Engine Information	6
PHOTOS	7
IMG_5419	7
IMG_5420	7
IMG_5425	7
IMG_5426	7
IMG_5472	7
IMG_5474	7
IMG_5476	8
IMG_5478	8
IMG_5480	8
IMG_5481	8
IMG_5483	8
IMG_5485	8
IMG_5486	9
IMG_5490	9
IMG_5491	9
IMG_5492	9
IMG_5493	9
IMG_5495	9
IMG_5497	10

---

IMG_5499	10
IMG_5500	10
IMG_5502	10
IMG_5504	10
IMG_5505	10
IMG_5506	11
IMG_5509	11
IMG_5511	11
IMG_5512	11
IMG_5515	11
IMG_5514	11
IMG_5516	12
IMG_5517	12
IMG_5518	12
IMG_5519	12
IMG_5520	13
IMG_5521	13
IMG_5522	13
IMG_5523	13
IMG_5524	13
IMG_5525	13
IMG_5526	14
IMG_5527	14
IMG_5528	14
IMG_5529	14
IMG_5530	14
IMG_5532	14
IMG_5574	15
IMG_5573	15

---

---

IMG_5576	15
IMG_5577	15
IMG_5578	15
IMG_5579	15
IMG_5582	16
IMG_5583	16
IMG_5584	16
IMG_5587	16
IMG_5588	16
IMG_5589	16
IMG_5603	17
IMG_5604	17
CONTACTS	18
Contact details	18
Telephones	18
Office hours	18
Address	18

---

# SPECIFICATIONS

---

## Basic Information

---

**Category:** houseboat

**Sub Category:** Houseboat

**Model Year:** 1980

**Year Built:** 1980

**Country:** United States

## Dimensions

---

**LOA:** 42' (12.8mm)

**Beam:** 12

**Max Draft:** 3' (0.91mm)

## Speed, Capacities and Weight

---

**Water Capacity:** 100 Gallons

**Holding Tank:** 35 Gal Gallons

**Fuel Capacity:** 150 Gal Gallons

## Accommodations

---

**Total Cabins:** 2

**Total Berths:** 3

**Sleeps:** 6

**Total Heads:** 1

## Hull and Deck Information

---

**Hull Material:** Fiberglass

**Deck Material:** Fiberglass

**Hull Configuration:** Planing

---

## Engine Information

---

**Engines:** 2

**Manufacturer:** Crusader

**Engine Type:** Inboard

**Fuel Type:** Gas/Petrol

# PHOTOS

IMG\_5419



IMG\_5420



IMG\_5425



IMG\_5426



IMG\_5472



IMG\_5474



IMG\_5476



IMG\_5478



IMG\_5480



IMG\_5481



IMG\_5483

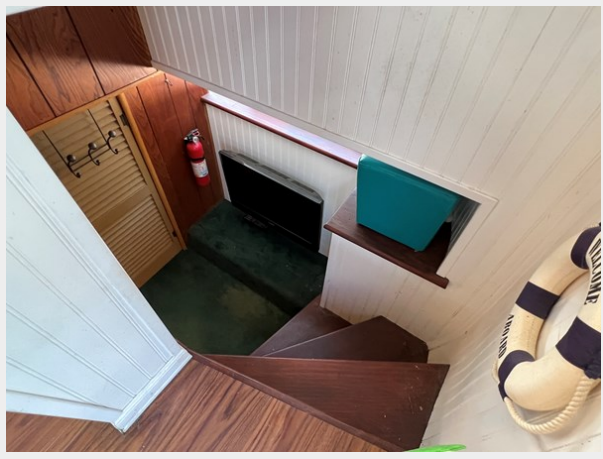


IMG\_5485





IMG\_5486



IMG\_5490



IMG\_5491



IMG\_5492



IMG\_5493



IMG\_5495



IMG\_5497



IMG\_5499



IMG\_5500



IMG\_5502



IMG\_5504



IMG\_5505



IMG\_5506



IMG\_5509



IMG\_5511



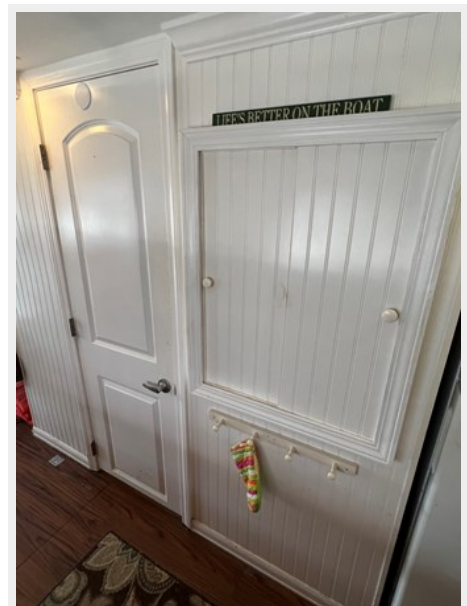
IMG\_5512



IMG\_5514



IMG\_5515



IMG\_5516



IMG\_5517



IMG\_5518



IMG\_5519



IMG\_5520



IMG\_5521



IMG\_5522



IMG\_5523



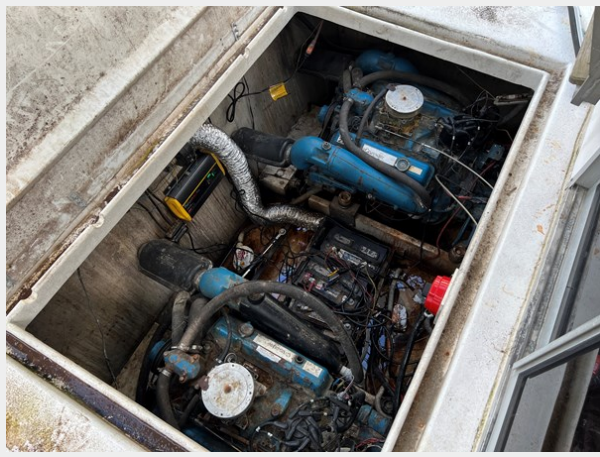
IMG\_5524



IMG\_5525



IMG\_5526



IMG\_5527



IMG\_5528



IMG\_5529



IMG\_5530



IMG\_5532



IMG\_5573



IMG\_5574



IMG\_5576



IMG\_5577



IMG\_5578



IMG\_5579



IMG\_5582



IMG\_5583



IMG\_5584



IMG\_5587



IMG\_5588



IMG\_5589





IMG\_5603



IMG\_5604



# CONTACTS

---

Andrey Shestakov, leading yacht broker of the sales department of Shestakov Yacht Sales Inc. Shestakov Yacht Sales Inc., the official representative of the Miami/Fort Lauderdale FL headquarters.

## Contact details

---

Email: [andrey@shestakovyachtsales.com](mailto:andrey@shestakovyachtsales.com)

Web: [shestakovyachtsales.com/en/](http://shestakovyachtsales.com/en/)

## Telephones

---

USA: +1(954)274-4435

## Office hours

---

Monday – Saturday: **9:00 - 21:00** EDT

Sunday: **closed**

## Address

---



Harbour Towne Marina, 850 NE 3rd St,  
STE 213, Dania, FL 33004