

## NELBLU — TA SHING YACHTS



**Builder:** TA SHING YACHTS

**Year Built:** 1981

**Model:** Cruising Sailboat

**Price:** PRICE ON APPLICATION

**LOA:** 43' 8" (13.31mm)

**Beam:** 12.33

**Max Draft:** 6' 3" (1.9mm)

**Cruise Speed:** 6 Knots Kts. (7 MPH)

Our experienced yacht broker, Andrey Shestakov, will help you choose and buy a yacht that best suits your needs **NELBLU — TA SHING YACHTS** from our catalogue. Presently, at Shestakov Yacht Sales Inc., we have a wide variety of yachts available on our sale's list. We also work in close contact with all the big yacht manufacturers from all over the world.

If you would like to buy a yacht **NELBLU — TA SHING YACHTS** or would like help answering any questions concerning purchasing, selling or chartering a yacht, please call **+1(954)274-4435**

# TABLE OF CONTENTS

TABLE OF CONTENTS	2
SPECIFICATIONS	4
Overview	4
Basic Information	5
Dimensions	5
Speed, Capacities and Weight	5
Accommodations	5
Hull and Deck Information	6
Engine Information	6
PHOTOS	7
PS view	7
PS full view at night	7
SB view	7
SB sailing (sistership)	7
Foredeck	8
Foredeck & Rig	8
Bimini & Solar panel	8
Foredeck PS	8
Deck with Cabin entrance	8
Cockpit facing aft (2)	8
Cockpit from above	9
Cockpit facing forward	9
Lounge & Galley PS	9
Lounge facing Aft (2)	9
Galley (2)	10
IMG_4236	10
Nav station & Steps	10
Nav station close up	10

---

Electrical cabinet	11
Engine below floor	11
Main Cabin PS	11
Main Cabin SB	11
Forward Cabin	12
PS Forward Cabin	12
Head	12
Showerstall	12
Rig	13
Mast & boom	13
Refurb bow	13
Refurb bow painted	13
Rudder & propellor	13
Refurb deck	13
Before relaunch	14
Refurb hull & underwater ship done	14
SB full view	14
Sailing PS (sistership)	14
<b>CONTACTS</b>	<b>15</b>
Contact details	15
Telephones	15
Office hours	15
Address	15

# SPECIFICATIONS

## Overview

Description NELBLU - Mason 43 – 1981, Registered in Langkawi, MMSI/AISSale due to international relocation  
Price 60,000USD Blue Water BeautyMain, Staysail, Genoa, and spare sails  
Full Keel, 2M Draft, 6 knots on Genoa Alone @ 14Knots wind

Works done 2021-2022:Hull Fully Refurbished, Painted, Anti Fouling, including all new through-hulls  
Teak Decks Removed – new deck epoxy non slip deck  
New Rocna Anchor  
Engine Refurbished  
Standing Rigging check by Surveyor – very good condition  
Helm – New Simrad GO integrated with Navionics, AIS, Engine Readings, Fuel Readings, and CZONE Electrics  
Helm – new Course Master from Autopilot  
New Solar Panel  
New Master Volt 25 Charge master MPPT  
New Actisense EMU-1  
New CZONE Electric Management System and New Wiring  
New Lithium House Bank  
New Starter Batteries  
New Senders Fuel Level Sensors, Tanks Cleaned  
New Beds and Cushions – Sunbrella  
New Bilge Pump

Galley Equipment  
Standard Fit Out  
Double Sink  
Gas Stove and Oven  
Refridgerator - needs new plates and compressor  
Includes 12V Standalone Fridge/Freezer Unit  
Mechanical Equipment  
Original Perkins 4-108 Diesel 50hp  
Original Perkins Manual Included  
Serviced November 2021

Additional Equipment  
2022 Improvements:  
Complete Rewire through CZONE  
New CZONE Touch 5 Kit see....  
New Mastervolt Charge Master 12/35-3  
New Lithium House Bank - 4x 3.2V = 100Ah  
Battery Fortune Lithium  
New Mastervolt SCM-25 MPPT 25  
New DALY SMART BMS - use BMS app to monitor Battery health  
Cost US\$17,700.  
New Bosch Alternator  
Navigation Systems  
Simrad GO7 with Navionics Card - installed April 2022  
Coursemaster - Installed April 2022  
AIS - mandatory in Singapore  
ICOM handheld, and ICOM VHF at Pilot Desk  
Simrad Autopilot - not functioning, needs new motor  
Radar - installed on mast but needs head unit if desired  
Radar Reflector  
All Nav lights functional and managed through Simrad/CZone units at Helm or Below Deck  
New ROCNA 25KG Anchor - best anchor on market, read reviews  
Accommodations  
Stern Salon - Sleeps 3  
Main Cabin - sleeps 3  
Fore Cabin - sleeps 1  
All new mattresses and covers (none for v berth)  
The salon features a U-shaped settee to port with a table that will lower to add a large additional berth when necessary. A straight settee is to starboard with an extra crew berth outboard. Lockers are behind both settees.  
The aft suite has a double berth to port and a single berth to starboard. There are storage lockers with louvered doors outboard of both berths. Another large storage locker is in between the berths.  
The galley is to port of the companionway steps and the nav station is to starboard of the companionway steps.  
The head is to port and forward of the salon. It has a stand-up separate shower with a seat, a vanity with marble top and lockers. The forward suite has a pullman type berth with seat, drawers, hanging locker and access to chain locker.

Deck and Hull Equipment  
Usual Fittings on deck  
Genoa  
Staysail  
Mainsail  
3 more sails below deck  
Cutter Style  
Several Rolls of rope types to spare  
Many spares - oil filters, tools, plumbing,

spare bilge pump  
New salt water pump on foredeck to clean anchor & chain  
All Nav lights functional  
BBQ and Gas Bottle

---

## Basic Information

---

**Category:** Cruising Sailboat

**Model Year:** 1981

**Year Built:** 1981

**Refit Type:** Full Mechanical, Electrical & Navigational. Plus Hull & Deck treatment

---

## Dimensions

---

**LOA:** 43' 8" (13.31mm)

**LWL:** 31' 3" (9.52mm)

**Beam:** 12.33

**Max Draft:** 6' 3" (1.9mm)

---

## Speed, Capacities and Weight

---

**Cruise Speed:** 6 Knots Kts. (7 MPH)

**Cruise Speed Range:** 500

**Gross Tonnage:** 16.35 Pounds

**Water Capacity:** 160 Gallons

**Holding Tank:** 20 Gal Gallons

**Fuel Capacity:** 132 Gal Gallons

---

## Accommodations

---

**Total Cabins:** 2

**Total Berths:** 5

**Sleeps:** 7

**Total Heads:** 1

---

## Hull and Deck Information

---

**Hull Material:** Fiberglass

**Deck Material:** Fiberglass

**Hull Configuration:** Long Keel

**Hull Color:** White

**Hull Designer:** Al Mason

**Exterior Designer:** Al Mason

**Interior Designer:** Al Mason

---

## Engine Information

---

**Engines:** 1

**Manufacturer:** Perkins Diesel

**Engine Type:** Inboard

**Fuel Type:** Diesel

# PHOTOS

**PS view**



**PS full view at night**



**SB view**



**SB sailing (sistership)**



**Foredeck**



**Foredeck & Rig**



**Bimini & Solar panel**



**Foredeck PS**



**Deck with Cabin entrance**



**Cockpit facing aft (2)**





**Cockpit from above**



**Cockpit facing forward**



**Lounge & Galley PS**

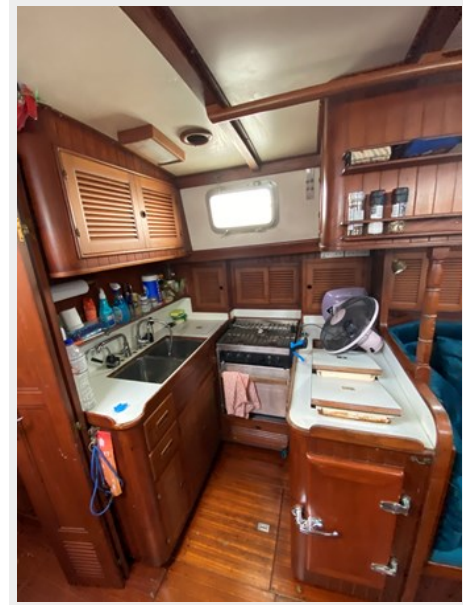


**Lounge facing Aft (2)**



### Galley (2)

IMG\_4236



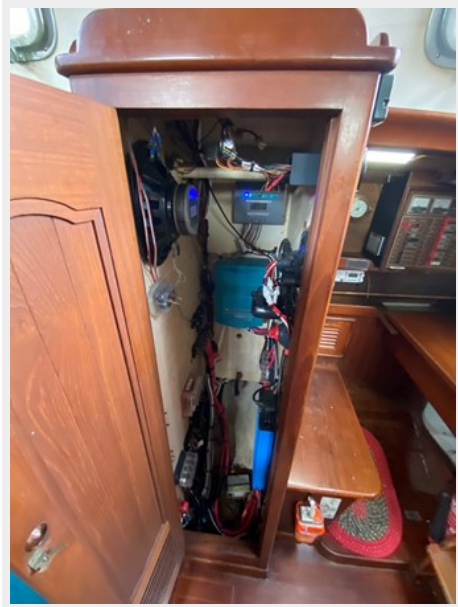
### Nav station & Steps



### Nav station close up



**Electrical cabinet**



**Engine below floor**



**Main Cabin PS**



**Main Cabin SB**



**Forward Cabin**



**PS Forward Cabin**



**Head**



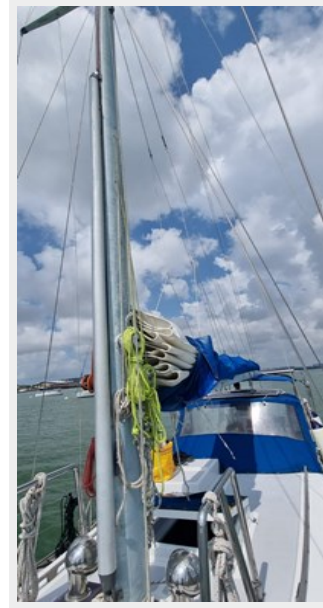
**Showerstall**



**Rig**



**Mast & boom**



**Refurb bow**



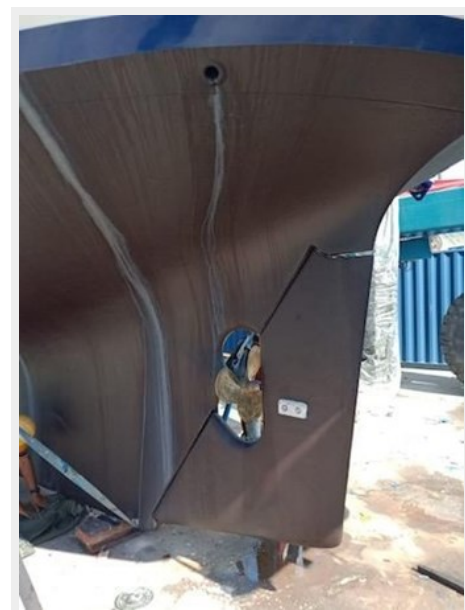
**Refurb bow painted**



**Refurb deck**



**Rudder & propellor**



**Refurb hull & underwater ship done**



**Before relaunch**



**SB full view**



**Sailing PS (sistership)**



# CONTACTS

---

Andrey Shestakov, leading yacht broker of the sales department of Shestakov Yacht Sales Inc. Shestakov Yacht Sales Inc., the official representative of the Miami/Fort Lauderdale FL headquarters.

## Contact details

---

Email: [andrey@shestakovyachtsales.com](mailto:andrey@shestakovyachtsales.com)

Web: [shestakovyachtsales.com/en/](http://shestakovyachtsales.com/en/)

## Telephones

---

USA: +1(954)274-4435

## Office hours

---

Monday – Saturday: **9:00 - 21:00** EDT

Sunday: **closed**

## Address

---



Harbour Towne Marina, 850 NE 3rd St,  
STE 213, Dania, FL 33004