

SHALL WE DANCE — BENETEAU



Builder: BENETEAU

Year Built: 2019

Model: Trawler Yacht

Price: PRICE ON APPLICATION

Location: United States

LOA: 30' (9.14mm)

Beam: 11.58

Max Draft: 3' 5" (1.04mm)

Cruise Speed: 26 Knots Kts. (30 MPH)

Our experienced yacht broker, Andrey Shestakov, will help you choose and buy a yacht that best suits your needs **Shall We Dance — BENETEAU** from our catalogue. Presently, at Shestakov Yacht Sales Inc., we have a wide variety of yachts available on our sale's list. We also work in close contact with all the big yacht manufacturers from all over the world.

If you would like to buy a yacht **Shall We Dance — BENETEAU** or would like help answering any questions concerning purchasing, selling or chartering a yacht, please call **+1(954)274-4435**

TABLE OF CONTENTS

TABLE OF CONTENTS	2
SPECIFICATIONS	5
Overview	5
Basic Information	5
Dimensions	5
Speed, Capacities and Weight	5
Accommodations	5
Hull and Deck Information	5
Engine Information	6
PHOTOS	7
IMG_7841	7
IMG_7846	7
IMG_7848	7
IMG_7849	7
IMG_7850	7
IMG_7842	7
IMG_7847	8
IMG_7852	8
IMG_7853	8
IMG_7851	8
IMG_7829	8
IMG_7802	8
IMG_7830	9
IMG_7799	9
IMG_7837	9
IMG_7798	9
IMG_7831	9
IMG_7827	9

IMG_7828	10
IMG_7801	10
IMG_7803	10
IMG_7800	10
IMG_7836	11
IMG_7805	11
IMG_7832	11
IMG_7833	11
IMG_7808	12
IMG_7834	12
IMG_7835	12
IMG_7809	12
IMG_7810	13
IMG_7811	13
IMG_7812	13
IMG_7813	13
IMG_7814	14
IMG_7815	14
IMG_7816	14
IMG_7817	14
IMG_7818	15
IMG_7819	15
IMG_7820	15
IMG_7821	15
IMG_7823	16
IMG_7839	16
IMG_7825	16
IMG_7826	16
IMG_7838	17

IMG_7840	17
IMG_7824	17
IMG_7822	17
underway	18
CONTACTS	19
Contact details	19
Telephones	19
Office hours	19
Address	19

SPECIFICATIONS

Overview

Basic Information

Category: Trawler Yacht

Model Year: 2019

Year Built: 2019

Country: United States

Dimensions

LOA: 30' (9.14mm)

Beam: 11.58

Max Draft: 3' 5" (1.04mm)

Speed, Capacities and Weight

Cruise Speed: 26 Knots Kts. (30 MPH)

Water Capacity: 80 Gallons

Fuel Capacity: 185 Gal Gallons

Accommodations

Total Cabins: 1

Sleeps: 2

Total Heads: 1

Hull and Deck Information

Hull Material: Fiberglass

Hull Configuration: Semi-Displacement

Hull Color: Grey

Engine Information

Engines: 1

Manufacturer: Volvo Penta

Engine Type: Inboard

Fuel Type: Diesel

PHOTOS

IMG_7841



IMG_7846



IMG_7848



IMG_7849



IMG_7850



IMG_7842



IMG_7847



IMG_7852



IMG_7853



IMG_7851



IMG_7829



IMG_7802



IMG_7830



IMG_7799



IMG_7837



IMG_7798



IMG_7831



IMG_7827



IMG_7828



IMG_7801



IMG_7803



IMG_7800



IMG_7836



IMG_7805



IMG_7832



IMG_7833



IMG_7834



IMG_7808



IMG_7835



IMG_7809



IMG_7810



IMG_7811



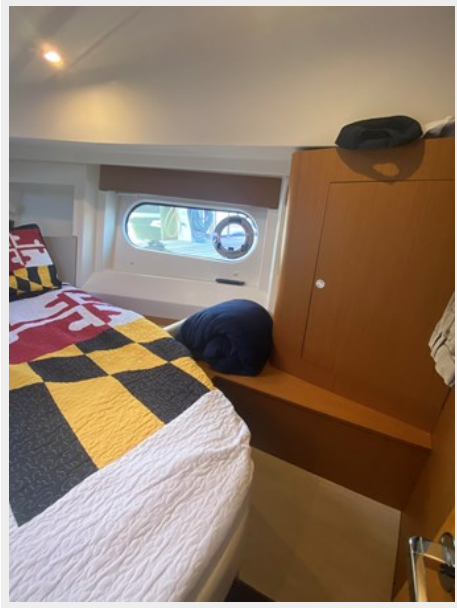
IMG_7812



IMG_7813



IMG_7814



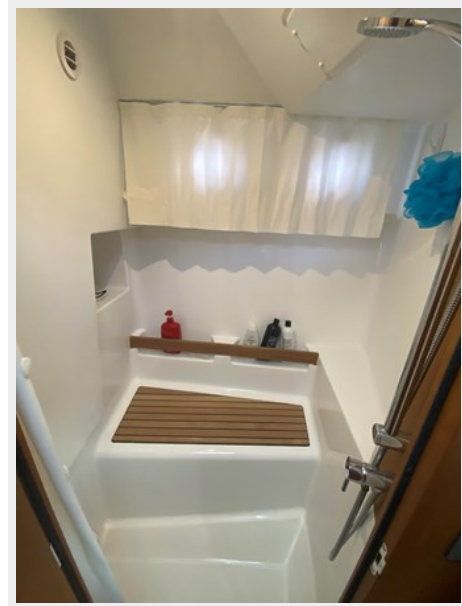
IMG_7815



IMG_7816



IMG_7817



IMG_7818



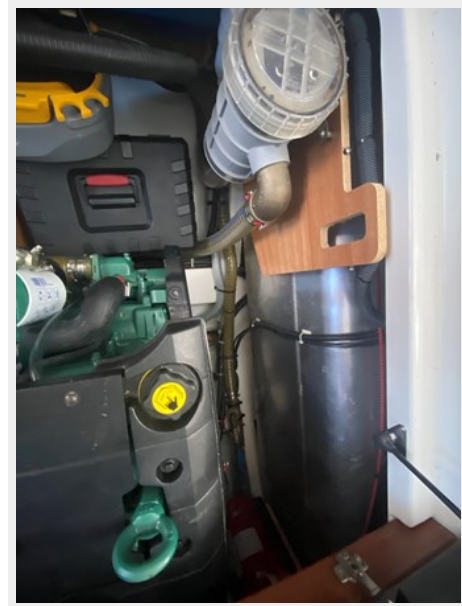
IMG_7819



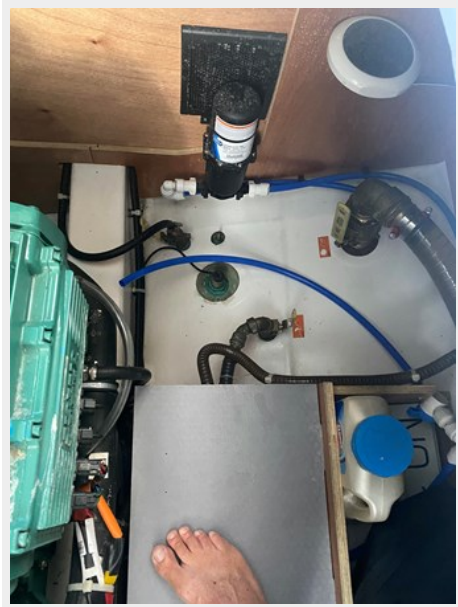
IMG_7820



IMG_7821



IMG_7823



IMG_7839



IMG_7825



IMG_7826



IMG_7838



IMG_7840



IMG_7824



IMG_7822



underway



CONTACTS

Andrey Shestakov, leading yacht broker of the sales department of Shestakov Yacht Sales Inc. Shestakov Yacht Sales Inc., the official representative of the Miami/Fort Lauderdale FL headquarters.

Contact details

Email: andrey@shestakovyachtsales.com

Web: shestakovyachtsales.com/en/

Telephones

USA: +1(954)274-4435

Office hours

Monday – Saturday: **9:00 - 21:00** EDT

Sunday: **closed**

Address



Harbour Towne Marina, 850 NE 3rd St,
STE 213, Dania, FL 33004