

SKY — PERSHING



Builder: PERSHING

Year Built: 2006

Model: Motor Yacht

Price: PRICE ON APPLICATION

Location: United States

LOA: 62' (18.9mm)

Beam: 16.41

Cruise Speed: 30.41 Knots Kts. (35 MPH)

Max Speed: 38.23 Knots Kts. (44 MPH)

Our experienced yacht broker, Andrey Shestakov, will help you choose and buy a yacht that best suits your needs **Sky — PERSHING** from our catalogue. Presently, at Shestakov Yacht Sales Inc., we have a wide variety of yachts available on our sale's list. We also work in close contact with all the big yacht manufacturers from all over the world.

If you would like to buy a yacht **Sky — PERSHING** or would like help answering any questions concerning purchasing, selling or chartering a yacht, please call **+1(954)274-4435**

TABLE OF CONTENTS

TABLE OF CONTENTS	2
SPECIFICATIONS	5
Overview	5
Basic Information	5
Dimensions	5
Speed, Capacities and Weight	6
Accommodations	6
Hull and Deck Information	6
Engine Information	6
PHOTOS	7
DJI_0690	7
DJI_0689	7
DJI_0691	7
DJI_0693	7
DJI_0694	7
DJI_0695	7
DJI_0696	8
DJI_0697	8
DJI_0698	8
DJI_0699	8
DJI_0700	8
DJI_0701	8
DJI_0702	9
DJI_0703	9
DJI_0705	9
DJI_0706	9
DJI_0707	9
DJI_0709	9

DJI_0710	10
DJI_0711	10
DJI_0712	10
DLP00805	10
DLP00811	10
DLP00814	10
DLP00826	11
DLP00829	11
DLP00835	11
DLP00844	11
DLP00859	11
DLP00865	11
DLP00871	12
DLP00877	12
DLP00880	12
DLP00889	12
DLP00898	12
DLP00904	12
DLP00907	13
DLP00910	13
DLP00913	13
DLP00924	13
DLP00927	13
DLP00930	13
DLP00936	14
DLP00939	14
DLP00945	14
DLP00951	14
DLP00954	14

DLP00955	14
DLP00961	15
DLP00964	15
DLP00970	15
DLP00973	15
DLP00994	15
DLP01003	15
DLP01006	16
DLP01015	16
DLP01032	16
DLP01035	16
CONTACTS	17
Contact details	17
Telephones	17
Office hours	17
Address	17

SPECIFICATIONS

Overview

Exceptionally well maintained 62 Pershing with under 400 hrs on REBUILT 1550 MAN's

The Pershing 62 is where Luxury meets Performance. Her rebuilt 1550HP V-12 MAN engines coupled to Arnesson Surface drives will not disappoint even the most discerning buyer. The Current owner has spent a extensive amount of money in maintenance and upgrades. This his 3 stateroom 3 head layout can comfortably accommodate 6 guests plus additional crew in the stern. A fully furnished galley equipped to provide all the comforts of home. REBUILT v-12 1550 hp ENGINES WITH JUST OVER 300 HRS - This Pershing is LIKE NEW. Pershing has created a vessel with uncompromised beauty and style. Her unique color combination will set you apart from other Pershing owners. Unrivaled attention to detail and extremely well designed living solutions provides the utmost in safety, entertainment and relaxation. Without the loss of comfort and privacy, this 3 stateroom 3 head layout can comfortably accommodate 6 guests plus additional crew in the stern. A fully furnished galley equipped to provide all the comforts of home. Incredible performance with speeds up to 46 appx knots powered by very efficient 1550hp MAN'S! If you are in the market for a Stylish and One of a kind Pershing 62, Don't Let This Slip By! She is easy to see 7 days a week.

Schedule your appointment today.

LOW HOURS ON REBUILT 1550 HP MAN'S!! ARNESSON SURAFCE DRIVES RECENTLY SERVICED

FULLY SERVICED ENGINES UPGRADED GARMIN ELECTRONICS BOTTOM JOB COMPLETED IN 2020 BOW AND STERN THRUSTERS!!

STERN GARAGE FOR TENDER

Owner is looking to move up Interesting trades may be considered!

Basic Information

Category: Motor Yacht

Model Year: 2006

Year Built: 2006

Country: United States

Dimensions

LOA: 62' (18.9mm)

Beam: 16.41

Speed, Capacities and Weight

Cruise Speed: 30.41 Knots Kts. (35 MPH) **Max Speed:** 38.23 Knots Kts. (44 MPH)

Water Capacity: 238 Gallons

Fuel Capacity: 925 Gal Gallons

Accommodations

Total Cabins: 3

Total Heads: 3

Hull and Deck Information

Hull Material: Fiberglass

Engine Information

Engines: 2

Manufacturer: MAN

Engine Type: Inboard

Fuel Type: Diesel

PHOTOS

DJI_0689



DJI_0690



DJI_0691



DJI_0693



DJI_0694



DJI_0695



DJI_0696



DJI_0697



DJI_0698



DJI_0699



DJI_0700



DJI_0701



DJI_0702



DJI_0703



DJI_0705



DJI_0706



DJI_0707



DJI_0709



DJI_0710



DJI_0711



DJI_0712



DLP00805



DLP00811



DLP00814



DLP00826



DLP00829



DLP00835



DLP00844



DLP00859



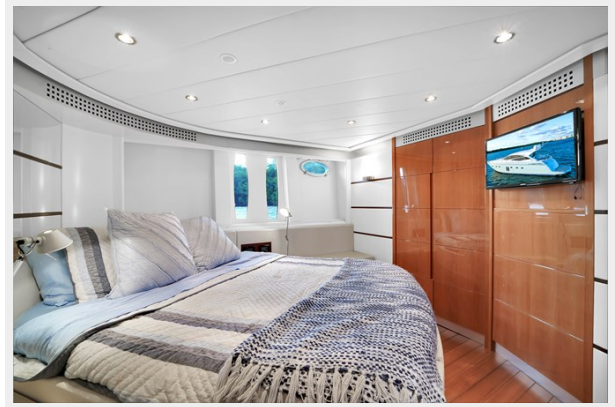
DLP00865



DLP00871



DLP00877



DLP00880



DLP00889



DLP00898



DLP00904



DLP00907



DLP00910



DLP00913



DLP00924



DLP00927



DLP00930



DLP00936



DLP00939



DLP00945



DLP00951



DLP00954



DLP00955



DLP00961



DLP00964



DLP00970



DLP00973



DLP00994



DLP01003



DLP01006



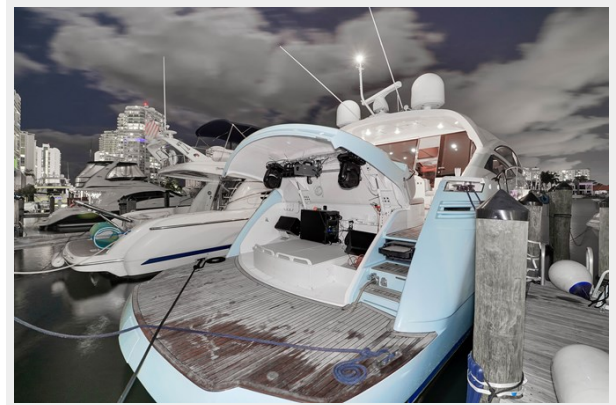
DLP01015



DLP01032



DLP01035



CONTACTS

Andrey Shestakov, leading yacht broker of the sales department of Shestakov Yacht Sales Inc. Shestakov Yacht Sales Inc., the official representative of the Miami/Fort Lauderdale FL headquarters.

Contact details

Email: andrey@shestakovyachtsales.com

Web: shestakovyachtsales.com/en/

Telephones

USA: +1(954)274-4435

Office hours

Monday – Saturday: **9:00 - 21:00** EDT

Sunday: **closed**

Address



Harbour Towne Marina, 850 NE 3rd St,
STE 213, Dania, FL 33004