

NILLY — HATTERAS



Builder: HATTERAS

Year Built: 1989

Model: Sport Fisherman

Price: PRICE ON APPLICATION

LOA: 55' (16.76mm)

Beam: 17.5

Max Draft: 4' 10" (1.47mm)

Cruise Speed: 24 Knots Kts. (28 MPH)

Our experienced yacht broker, Andrey Shestakov, will help you choose and buy a yacht that best suits your needs **Nilly — HATTERAS** from **our catalogue**. Presently, at **Shestakov Yacht Sales Inc.**, we have a wide variety of yachts available on **our sale's list**. We also work in close contact with all the big **yacht manufacturers** from all over the world.

If you would like to buy a yacht **Nilly — HATTERAS** or would like help answering any questions concerning purchasing, selling or chartering a yacht, please call **+1(954)274-4435**

TABLE OF CONTENTS

TABLE OF CONTENTS	2
SPECIFICATIONS	4
Overview	4
Basic Information	4
Dimensions	4
Speed, Capacities and Weight	4
Accommodations	4
Hull and Deck Information	5
Engine Information	5
PHOTOS	6
8333993_20220526101900341_1_XLARGE	6
8333993_20220526101902304_1_XLARGE	6
8333993_20220526101904302_1_XLARGE	6
8333993_20220526101906323_1_XLARGE	6
8333993_20220526101908262_1_XLARGE	6
8333993_20220526101909312_1_XLARGE	6
8333993_20220526101910318_1_XLARGE	6
8333993_20220526102031191_1_XLARGE	6
8333993_20220526102033177_1_XLARGE	7
8333993_20220526102035174_1_XLARGE	7
8333993_20220526102038178_1_XLARGE	7
8333993_20220526102039202_1_XLARGE	7
8333993_20220526102040212_1_XLARGE	7
8333993_20220804123426068_1_XLARGE	7
8333993_20220804123427091_1_XLARGE	7
CONTACTS	8
Contact details	8
Telephones	8

Office hours 8

Address 8

SPECIFICATIONS

Overview

1989 55' Hatteras

- 3 state room floor plan
- 3 heads
- Galley up
- 158 sq/ft of cockpit
- Full Tower
- Davit Crane
- ac /heat
- Generator
-

Basic Information

Category: Sport Fisherman

Model Year: 1989

Year Built: 1989

Dimensions

LOA: 55' (16.76mm)

Beam: 17.5

Max Draft: 4' 10" (1.47mm)

Speed, Capacities and Weight

Cruise Speed: 24 Knots Kts. (28 MPH)

Accommodations

Total Cabins: 3

Total Heads: 3

Hull and Deck Information

Hull Material: Fiberglass

Engine Information

Engines: 2

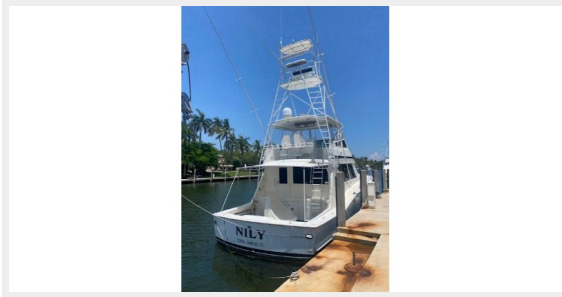
Manufacturer: Detroit Diesel

Engine Type: Inboard

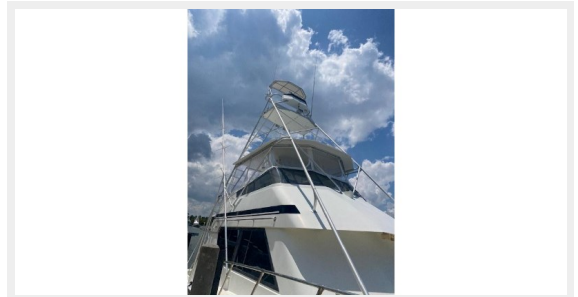
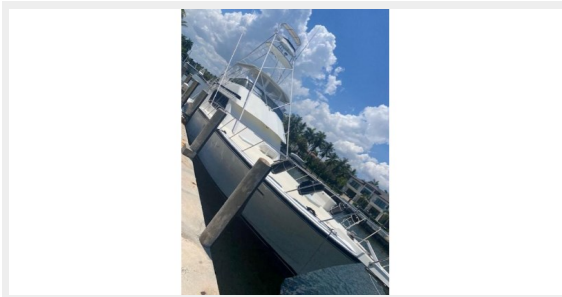
Fuel Type: Diesel

PHOTOS

8333993_20220526101900341_1_XLARGE 8333993_20220526101902304_1_XLARGE



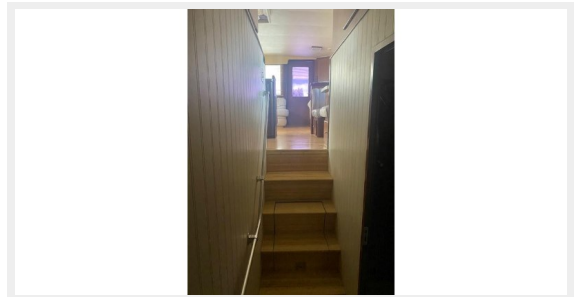
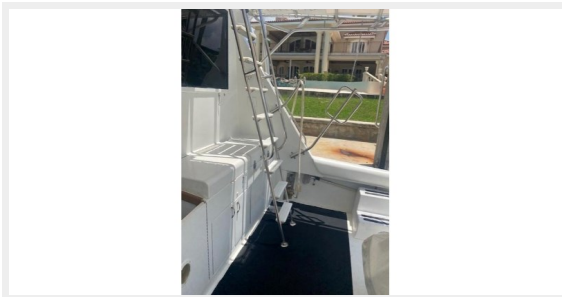
8333993_20220526101904302_1_XLARGE 8333993_20220526101906323_1_XLARGE



8333993_20220526101908262_1_XLARGE 8333993_20220526101909312_1_XLARGE



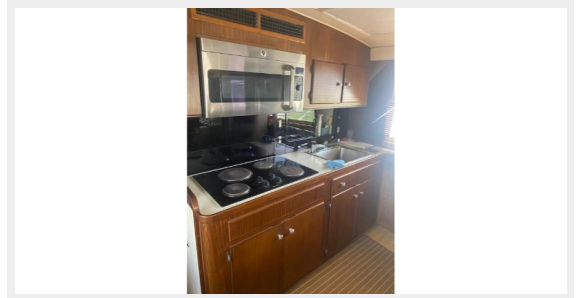
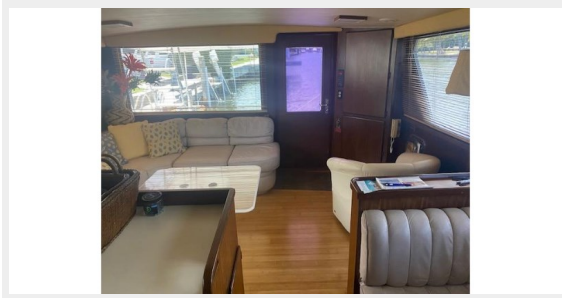
8333993_20220526101910318_1_XLARGE 8333993_20220526102031191_1_XLARGE



8333993_20220526102033177_1_XLARGE 8333993_20220526102035174_1_XLARGE



8333993_20220526102038178_1_XLARGE 8333993_20220526102039202_1_XLARGE



8333993_20220526102040212_1_XLARGE 8333993_20220804123426068_1_XLARGE



8333993_20220804123427091_1_XLARGE



CONTACTS

Andrey Shestakov, leading yacht broker of the sales department of Shestakov Yacht Sales Inc. Shestakov Yacht Sales Inc., the official representative of the Miami/Fort Lauderdale FL headquarters.

Contact details

Email: **andrey@shestakovyachtsales.com**

Web: shestakovyachtsales.com/en/

Telephones

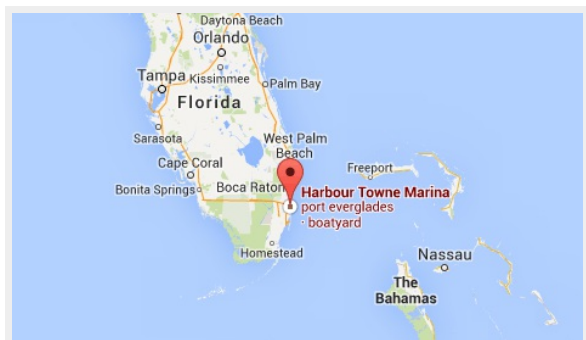
USA: **+1(954)274-4435**

Office hours

Monday – Saturday: **9:00 - 21:00** EDT

Sunday: **closed**

Address



Harbour Towne Marina, 850 NE 3rd St, STE 213, Dania, FL 33004