

AZIMUT GRANDE 26 METRI — AZIMUT YACHTS



Builder: [AZIMUT YACHTS](#)

Year Built: 2024

Model: Motor Yacht

Price: [PRICE ON APPLICATION](#)

Location: Italy

LOA: 85' 8" (26.09mm)

Beam: 20.5

Min Draft: 5' 3" (1.6mm)

Max Draft: 8' 3" (2.5mm)

Cruise Speed: 28 Knots Kts. (32 MPH)

Max Speed: 32 Knots Kts. (37 MPH)

Our experienced yacht broker, Andrey Shestakov, will help you choose and buy a yacht that best suits your needs **Azimut Grande 26 Metri — AZIMUT YACHTS** from our catalogue. Presently, at **Shestakov Yacht Sales Inc.**, we have a wide variety of yachts available on our sale's list. We also work in close contact with all the big yacht manufacturers from all over the world.

If you would like to buy a yacht **Azimut Grande 26 Metri — AZIMUT YACHTS** or would like help answering any questions concerning purchasing, selling or chartering a yacht, please call **+1(954)274-4435**

TABLE OF CONTENTS

TABLE OF CONTENTS	2
SPECIFICATIONS	4
Overview	4
Basic Information	5
Dimensions	5
Speed, Capacities and Weight	5
Accommodations	5
Hull and Deck Information	6
Engine Information	6
PHOTOS	7
26m External	7
26m External	7
26m. External	7
26m Flybridge	7
26m Cockpit	7
26m Flybridge	7
26m Cockpit	8
Grande 26M_Salon	8
26m Salon	8
26m Salon	8
26m Helm Station	8
26m Salon	8
26mGalley	9
26m Master Cabin	9
26m Master Cabin	9
26m Master Head	9
26m Lower Deck Hall	9
26m Guest Cabin	9

Grande 26M_Studio	10
Grande 26M_VIP	10
Grande 26M_Fly	10
Grande 26M_Master	10
Grande 26M D2D	10
Grande 26M_Main	10
CONTACTS	11
Contact details	11
Telephones	11
Office hours	11
Address	11

SPECIFICATIONS

Overview

Presenting the 2024 26.09m AZIMUT YACHTS Motor Yacht, a contemporary wonder that seamlessly blends opulence, ease, and fashion. This refined marine craft offers a perfect blend of cutting-edge engineering, impeccable design aesthetics, and exemplary artisanship that truly represents the globally recognized yacht builder – Azimut Yachts. The motor yacht stands tall and grand at 26.09 meters, designed to not only impress but also provide functional and practical solutions. Its facade, a spectacular display of elegance and grace, was intricately created to ensure the yacht is a unique and eye-catching sight in any waters it ventures into. Constructed with a slim, streamline structure made from top-notch, long-lasting materials, the yacht promises a steady and serene voyage, even amidst harsh waves. It boasts a sizeable fly bridge providing additional functional space, ideal for sea-lovers who enjoy the union of sea and sky vistas. Aboard this outstanding vessel, the interior encapsulates a sense of luxury at every corner. The areas are illuminated by natural light, thanks to a design layout that accommodates big windows without compromising the structure's strength. It is adorned with quality textiles, finely polished woodwork, top-of-the-line fixtures, and stylish yet functional furniture, enhancing the ambience of finesse and sophistication. It contains four generously-sized cabins that exhibit a fusion of modern and traditional design styles, creating an urban-luxe atmosphere. These spaces provide cozy and comfortable accommodations for up to eight plus one guests, featuring a master suite, a VIP suite, and two dual cabins. Each cabin is equipped with ensuite facilities and cutting-edge entertainment systems making each guest's space an exquisite mixture of comfort and entertainment. The yacht's living room is a structural work-of-art, boasting an open design with high-quality furnishings, a superior entertainment set-up and a spacious lounge area ensuring maximum rest and relaxation for all onboard. The large deck space supports numerous outdoor activities and includes an alfresco dining area at the stern, sun loungers ideal for sunbathing, and a jacuzzi for enjoyment while cruising the open seas. The aft deck, a focal point for social gatherings, incorporates seats and a dining table, perfect for alfresco dining or unwinding with a book in hand. For the culinary inclined, the yacht's galley is equipped with the latest appliances, facilitating the preparation of gourmet cuisines at sea. The expansive countertop and ample storage, combined with state-of-the-art equipment, provide the functionality and space of a professional galley. The 2024 26.09m Azimut yacht is technologically in line with the most advanced yachts, featuring marine navigation systems, innovative safety gear, and a state-of-the-art engine monitoring system. Fueled by dependable diesel engines, this super-yacht offers an optimal blend of speed and cruising efficiency, ensuring expedite and seamless travel from one destination to another. For aquatic sports lovers, the yacht is furnished with an array of water toys and sports gear. A hydraulic swimming platform functions as the perfect springboard for all water sports. After a day of adventure, the abundantly appointed beach club is the prime relaxation spot for enjoying a sunset cocktail or two. In summary, the 2024 26.09m AZIMUT YACHTS Motor Yacht is more than just a magnificent vessel; it's a maritime mansion exuding splendor and luxury at every corner. Its representation of Azimut's long-standing tradition of marrying high-tech features with the warmth of opulent interiors sets this yacht apart. Every minute spent on this ship,

from the tranquility of early morning views to the thrill of speeding along the coast at dusk, becomes a lasting memory. It truly embodies a form of travel that transcends the conventional; it exemplifies refinement and luxury.

Basic Information

Category: Motor Yacht	Model Year: 2024
Year Built: 2024	Country: Italy

Dimensions

LOA: 85' 8" (26.09mm)	Beam: 20.5
Min Draft: 5' 3" (1.6mm)	Max Draft: 8' 3" (2.5mm)

Speed, Capacities and Weight

Cruise Speed: 28 Knots Kts. (32 MPH)	Cruise Speed Range: 325
Max Speed: 32 Knots Kts. (37 MPH)	Max Speed Range: 260 Kts.
Gross Tonnage: 80 Pounds	Water Capacity: 1100 Gallons
Holding Tank: 132.09 Gal Gallons	Fuel Capacity: 2324.71 Gal Gallons

Accommodations

Total Cabins: 4	Total Berths: 8
Sleeps: 8	Total Heads: 4
Crew Cabin: 2	Crew Berths: 2
Crew Heads: 1	

Hull and Deck Information

Hull Material: Fiberglass

Deck Material: Teak

Hull Configuration: Planing

Hull Designer: Stefano Righini

Exterior Designer: Alberto Mancini

Interior Designer: Achille Salvagni

Engine Information

Engines: 1

Manufacturer: Volvo Penta

Fuel Type: Diesel

PHOTOS

26m External



26m External



26m. External



26m Flybridge



26m Flybridge



26m Cockpit



26m Cockpit



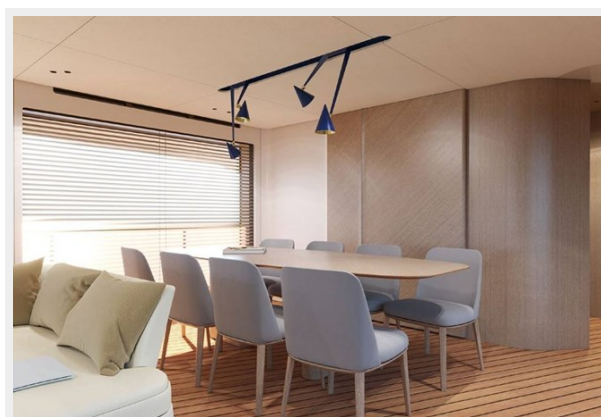
Grande 26M_Salon



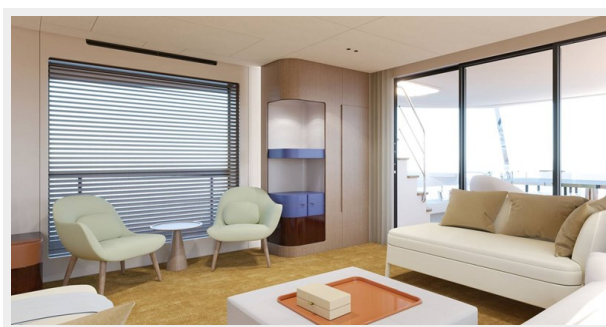
26m Salon



26m Salon



26m Salon



26m Helm Station



26mGalley



26m Master Cabin



26m Master Cabin



26m Master Head



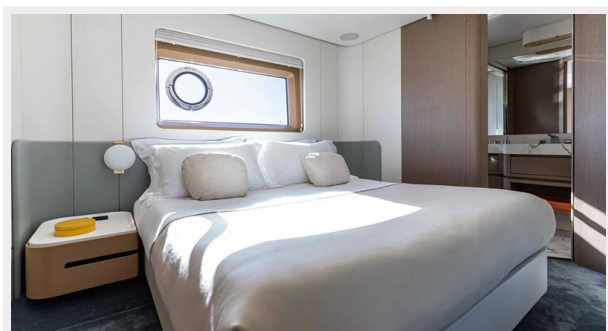
26m Guest Cabin



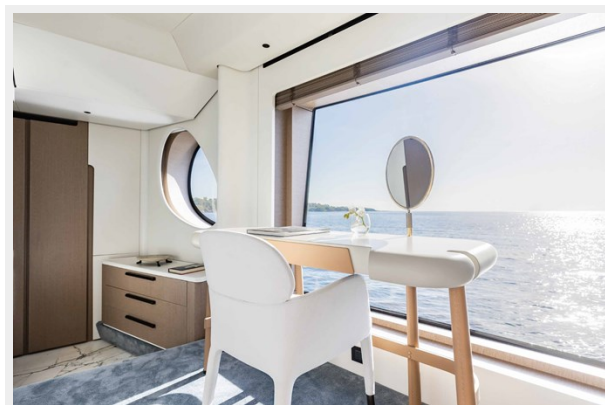
26m Lower Deck Hall



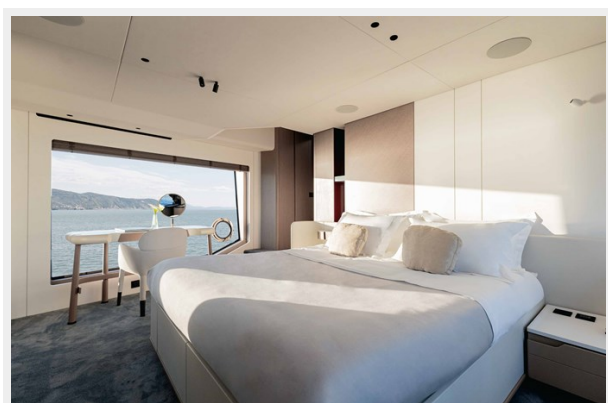
Grande 26M_VIP



Grande 26M_Studio



Grande 26M_Master



Grande 26M_Fly



Grande 26M D2D



Grande 26M_Main



CONTACTS

Andrey Shestakov, leading yacht broker of the sales department of Shestakov Yacht Sales Inc. Shestakov Yacht Sales Inc., the official representative of the Miami/Fort Lauderdale FL headquarters.

Contact details

Email: **andrey@shestakovyachtsales.com**

Web: shestakovyachtsales.com/en/

Telephones

USA: **+1(954)274-4435**

Office hours

Monday – Saturday: **9:00 - 21:00 EDT**

Sunday: **closed**

Address



Harbour Towne Marina, 850 NE 3rd St,
STE 213, Dania, FL 33004