

## **BELLE MEADE — AMERICAN TUG**



**Builder:** AMERICAN TUG

**Year Built:** 2003

**Model:** Trawler Yacht

**Price:** **PRICE ON APPLICATION**

**LOA:** 34' (10.36mm)

**Beam:** 13.25

**Max Draft:** 3' 6" (1.07mm)

Our experienced yacht broker, Andrey Shestakov, will help you choose and buy a yacht that best suits your needs **Belle Meade — AMERICAN TUG** from **our catalogue**. Presently, at **Shestakov Yacht Sales Inc.**, we have a wide variety of yachts available on **our sale's list**. We also work in close contact with all the big **yacht manufacturers** from all over the world.

If you would like to buy a yacht **Belle Meade — AMERICAN TUG** or would like help answering any questions concerning purchasing, selling or chartering a yacht, please call **+1(954)274-4435**

# TABLE OF CONTENTS

|                              |   |
|------------------------------|---|
| TABLE OF CONTENTS            | 2 |
| SPECIFICATIONS               | 5 |
| Overview                     | 5 |
| Basic Information            | 5 |
| Dimensions                   | 5 |
| Speed, Capacities and Weight | 5 |
| Accommodations               | 6 |
| Hull and Deck Information    | 6 |
| Engine Information           | 6 |
| PHOTOS                       | 7 |
| 1_2792082_                   | 7 |
| 0_2792082_                   | 7 |
| 3_2792082_                   | 7 |
| 2_2792082_                   | 7 |
| 5_2792082_                   | 7 |
| 4_2792082_                   | 7 |
| 6_2792082_                   | 8 |
| 7_2792082_                   | 8 |
| 9_2792082_                   | 8 |
| 8_2792082_                   | 8 |
| 10_2792082_                  | 8 |
| 11_2792082_                  | 8 |
| 12_2792082_                  | 9 |
| 13_2792082_                  | 9 |
| 14_2792082_                  | 9 |
| 15_2792082_                  | 9 |
| 16_2792082_                  | 9 |
| 17_2792082_                  | 9 |

---

|             |    |
|-------------|----|
| 18_2792082_ | 10 |
| 19_2792082_ | 10 |
| 20_2792082_ | 10 |
| 21_2792082_ | 10 |
| 22_2792082_ | 11 |
| 23_2792082_ | 11 |
| 25_2792082_ | 11 |
| 24_2792082_ | 11 |
| 27_2792082_ | 11 |
| 26_2792082_ | 11 |
| 29_2792082_ | 12 |
| 28_2792082_ | 12 |
| 30_2792082_ | 12 |
| 31_2792082_ | 12 |
| 33_2792082_ | 12 |
| 32_2792082_ | 12 |
| 34_2792082_ | 13 |
| 35_2792082_ | 13 |
| 36_2792082_ | 13 |
| 37_2792082_ | 13 |
| 39_2792082_ | 13 |
| 38_2792082_ | 13 |
| 40_2792082_ | 14 |
| 41_2792082_ | 14 |
| 43_2792082_ | 14 |
| 42_2792082_ | 14 |
| 45_2792082_ | 15 |
| 44_2792082_ | 15 |
| 46_2792082_ | 15 |

---

---

|                 |    |
|-----------------|----|
| 47_2792082_     | 15 |
| 48_2792082_     | 15 |
| 49_2792082_     | 15 |
| 50_2792082_     | 16 |
| 51_2792082_     | 16 |
| 52_2792082_     | 16 |
| 53_2792082_     | 16 |
| 54_2792082_     | 17 |
| 55_2792082_     | 17 |
| 57_2792082_     | 17 |
| 56_2792082_     | 17 |
| 59_2792082_     | 17 |
| 58_2792082_     | 17 |
| 60_2792082_     | 18 |
| CONTACTS        | 19 |
| Contact details | 19 |
| Telephones      | 19 |
| Office hours    | 19 |
| Address         | 19 |

---

# SPECIFICATIONS

---

## Overview

---

**Belle Mead** is a 34 American Tug (Hull #45) built in LaConner, Washington by the Tomco Marine Group. This comfortable trawler debuted in 2001 to critical acclaim. She is described by the Powerboat Guide as a sought-after coastal cruiser loaded with practical features. The previous owners of Belle Meade spent a few years cruising the Bahamas during the winter months. She is very well maintained, and is truly turn-key. She has a full efficient single-engine and cruises comfortably at 7.5 knots @ 1500 RPM, while burning 2.5 GPH, with a cruising range of approximately 1000 nautical miles. Belle Meade comes packed with features and amenities like Side Power 6hp Bow Thruster, Onan 5kw Generator, two 30 amp shore power circuits, 2000 watt inverter, 26000 BTU HVAC system, and 2018 RIB tender on electric davits.

If the Great Loop, cruising the ICW, Great Lakes, or the Bahama Islands is in your future boating plans, this is the vessel for you. Please see the full descriptions below for all the details including walkthrough video and 360 photos.

## Basic Information

---

**Category:** Trawler Yacht

**Model Year:** 2003

**Year Built:** 2003

## Dimensions

---

**LOA:** 34' (10.36mm)

**LWL:** 32' 9" (9.98mm)

**Beam:** 13.25

**Max Draft:** 3' 6" (1.07mm)

## Speed, Capacities and Weight

---

**Water Capacity:** 150 Gallons

**Holding Tank:** 45 Gal Gallons

**Fuel Capacity:** 400 Gal Gallons

---

## Accommodations

---

**Total Cabins:** 2

**Total Heads:** 1

---

## Hull and Deck Information

---

**Hull Material:** Fiberglass

---

## Engine Information

---

**Engines:** 1

**Manufacturer:** Cummins

**Engine Type:** Inboard

**Fuel Type:** Diesel

# PHOTOS

0\_2792082\_



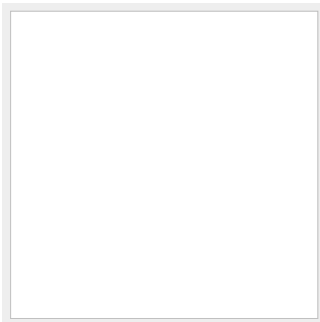
1\_2792082\_



3\_2792082\_



2\_2792082\_



4\_2792082\_



5\_2792082\_



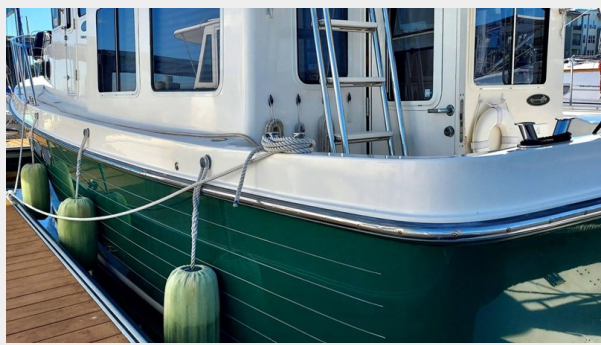
6\_2792082\_



7\_2792082\_



8\_2792082\_



9\_2792082\_



10\_2792082\_



11\_2792082\_

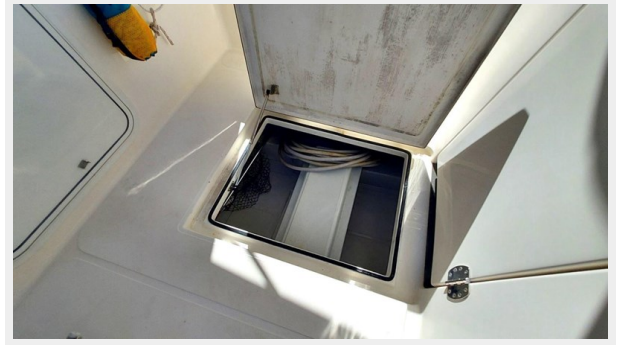




12\_2792082\_



13\_2792082\_



14\_2792082\_



15\_2792082\_



16\_2792082\_



17\_2792082\_



18\_2792082\_



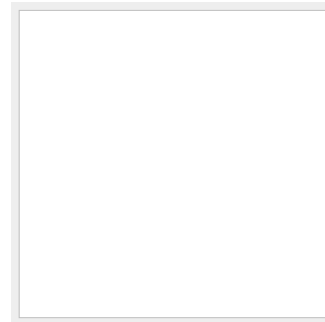
19\_2792082\_



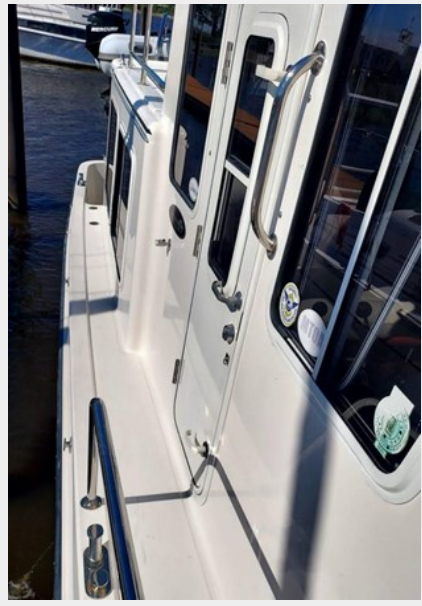
20\_2792082\_



21\_2792082\_



22\_2792082\_



23\_2792082\_



24\_2792082\_



25\_2792082\_



26\_2792082\_



27\_2792082\_



28\_2792082\_



29\_2792082\_



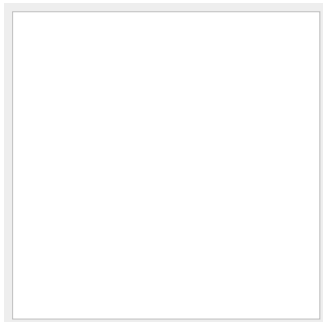
30\_2792082\_



31\_2792082\_



32\_2792082\_



33\_2792082\_



34\_2792082\_



35\_2792082\_



36\_2792082\_



37\_2792082\_



38\_2792082\_



39\_2792082\_



40\_2792082\_



41\_2792082\_



43\_2792082\_



42\_2792082\_



44\_2792082\_



45\_2792082\_



46\_2792082\_



47\_2792082\_



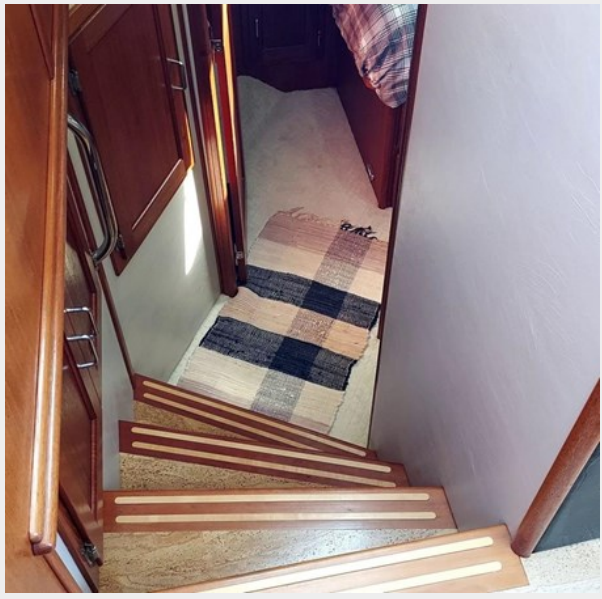
48\_2792082\_



49\_2792082\_



50\_2792082\_



51\_2792082\_



52\_2792082\_



53\_2792082\_





54\_2792082\_



55\_2792082\_



56\_2792082\_



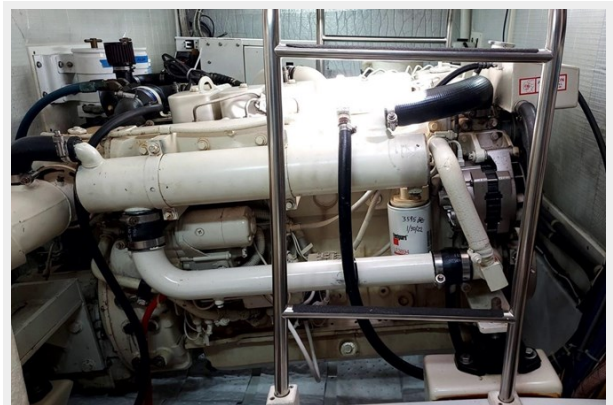
57\_2792082\_



58\_2792082\_



59\_2792082\_



60\_2792082\_



# CONTACTS

---

Andrey Shestakov, leading yacht broker of the sales department of Shestakov Yacht Sales Inc. Shestakov Yacht Sales Inc., the official representative of the Miami/Fort Lauderdale FL headquarters.

## Contact details

---

Email: **andrey@shestakovyachtsales.com**

Web: [shestakovyachtsales.com/en/](https://shestakovyachtsales.com/en/)

## Telephones

---

USA: **+1(954)274-4435**

## Office hours

---

Monday – Saturday: **9:00 - 21:00** EDT

Sunday: **closed**

## Address

---



Harbour Towne Marina, 850 NE 3rd St, STE 213, Dania, FL 33004