

## WESTWARD DRIFT — BENETEAU



**Builder:** BENETEAU

**LOA:** 44' (13.41mm)

**Year Built:** 2019

**Model:** trawler

**Price:** PRICE ON APPLICATION

**Location:** United States

Our experienced yacht broker, Andrey Shestakov, will help you choose and buy a yacht that best suits your needs **Westward Drift — BENETEAU** from our catalogue. Presently, at Shestakov Yacht Sales Inc., we have a wide variety of yachts available on our sale's list. We also work in close contact with all the big yacht manufacturers from all over the world.

If you would like to buy a yacht **Westward Drift — BENETEAU** or would like help answering any questions concerning purchasing, selling or chartering a yacht, please call **+1(954)274-4435**

# TABLE OF CONTENTS

---

TABLE OF CONTENTS	2
SPECIFICATIONS	4
Overview	4
Basic Information	5
Dimensions	5
Accommodations	5
Hull and Deck Information	5
Engine Information	5
PHOTOS	6
2019 ST 44 - 1	6
2019 ST 44 - 4	6
2019 ST 44 - 5	6
2019 ST 44 - 6	6
2019 ST 44 - 7	6
2019 ST 44 - 8	6
2019 ST 44 - 11	7
2019 ST 44 - 13	7
2019 ST 44 - 15	8
2019 ST 44 - 16	8
2019 ST 44 - 17	8
2019 ST 44 - 18	8
2019 ST 44 - 19	8
2019 ST 44 - 22	9
2019 ST 44 - 23	9
2019 ST 44 - 24	9
2019 ST 44 - 26	9
2019 ST 44 - 27	9
2019 ST 44 - 28	9

---

2019 ST 44 - 29	10
2019 ST 44 - 30	10
2019 ST 44 - 31	10
2019 ST 44 - 32	10
2019 ST 44 - 33	10
2019 ST 44 - 34	10
2019 ST 44 - 35	11
2019 ST 44 - 36	11
2019 ST 44 - 37	11
2019 ST 44 - 38	11
2019 ST 44 - 39	11
2019 ST 44 - 40	11
2019 ST 44 - 41	12
2019 ST 44 - 42	12
2019 ST 44 - 43	12
2019 ST 44 - 44	12
2019 ST 44 - 45	12
<b>CONTACTS</b>	<b>13</b>
Contact details	13
Telephones	13
Office hours	13
Address	13

---

# SPECIFICATIONS

---

## Overview

---

"**Westward Drift**" is a great example. Her owners, who bought her new, have added lots of improvements and followed all the servicing guidelines, often going above and beyond. Besides the fact that she's a 2019 with the latest electronics and low use (only 415 hours on the engines, and 188 on the generator), the owners have added a full flybridge enclosure, an Olsson Davit off the stern with a very nice AB tender, custom mattresses and Infinity mats for the cockpit and starboard sidedeck. She has lots of newer boating gear and is turnkey and ready to cruise (The owners just came back from a final cruise into Canada).

The **Beneteau Swift Trawler 44** is one of the most popular fast trawlers ever designed (over 300 were made); capable of fast cruising at 18 knots, she is powered by twin 300 HP Volvo Pentas, with bow and stern thrusters for ease of docking. She features 2 cabins and 2 heads, and the salon can easily be converted into sleeping for 2 more guests.

**Lastly, this boat is in an LLC that can be purchased.**

**Features Include (See "Other Details" for full specs):**

- **Extended Warranty through Brunswick - about 2 years remaining. Covers most of the equipment!**
- **Engines - 2 x 300 HP Volvo Penta diesel engines with straight shafts.** Easily cruises at 18-20 knots (Top speed 25 knots), for around 340 NM of range, or slow it down to 8-9 knots for "slow cruise" speed, giving you about 2NM/Gal, or well over 600 NM of range. (**Regular service records since new. Last service just completed August 2022**).
- **Bow and stern thrusters**
- **Air Conditioning and Heating**
- **Recent full wax job, just cleaned interior and exterior.**
- **Bimini and full enclosure - Added 2021**
- **Olssen electric davit system on swim platform, with AB 9VL Dinghy w/keelguard, and Suzuki 9.9hp outboard with electric start and tilt - Added 2021**
- **Yacht Sentinel Remote monitoring system**
- **Stern anchor with 150 feet of chain**
- **HMC Custom Mattress for Owner's cabin, Custom sheets, HMC custom topper in VIP cabin**

**Available to see at Elliott Bay Marina in Seattle, WA.**

---

## Basic Information

---

**Category:** trawler

**Model Year:** 2019

**Year Built:** 2019

**Country:** United States

---

## Dimensions

---

**LOA:** 44' (13.41mm)

---

## Accommodations

---

**Total Cabins:** 2

---

## Hull and Deck Information

---

**Hull Material:** Fiberglass

---

## Engine Information

---

**Engines:** 2

**Manufacturer:** Volvo Penta

**Engine Type:** Inboard

**Fuel Type:** Diesel

# PHOTOS

2019 ST 44 - 1



2019 ST 44 - 4



2019 ST 44 - 5



2019 ST 44 - 6



2019 ST 44 - 7



2019 ST 44 - 8





2019 ST 44 - 11



2019 ST 44 - 13



2019 ST 44 - 15



2019 ST 44 - 16



2019 ST 44 - 17



2019 ST 44 - 18



2019 ST 44 - 19





2019 ST 44 - 22



2019 ST 44 - 23



2019 ST 44 - 24



2019 ST 44 - 26



2019 ST 44 - 27



2019 ST 44 - 28



2019 ST 44 - 29



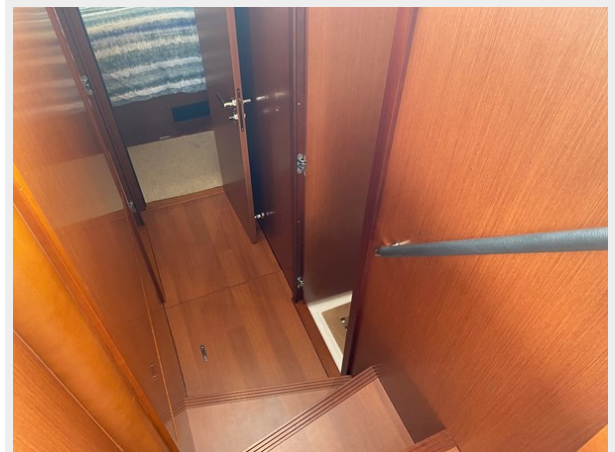
2019 ST 44 - 30



2019 ST 44 - 31



2019 ST 44 - 32



2019 ST 44 - 33



2019 ST 44 - 34



2019 ST 44 - 35



2019 ST 44 - 36



2019 ST 44 - 37



2019 ST 44 - 38



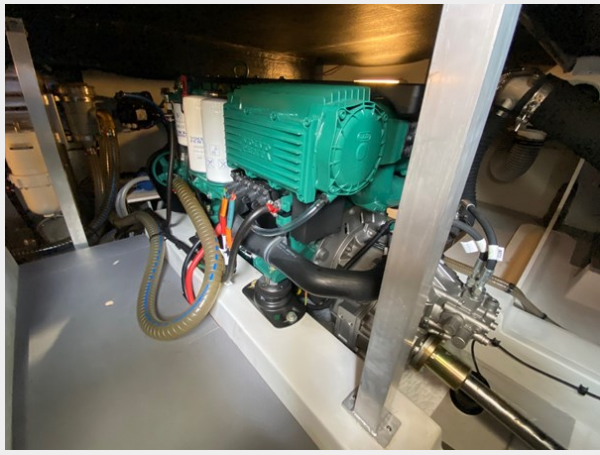
2019 ST 44 - 39



2019 ST 44 - 40



2019 ST 44 - 41



2019 ST 44 - 42



2019 ST 44 - 43



2019 ST 44 - 44



2019 ST 44 - 45



# CONTACTS

---

Andrey Shestakov, leading yacht broker of the sales department of Shestakov Yacht Sales Inc. Shestakov Yacht Sales Inc., the official representative of the Miami/Fort Lauderdale FL headquarters.

## Contact details

---

Email: [andrey@shestakovyachtsales.com](mailto:andrey@shestakovyachtsales.com)

Web: [shestakovyachtsales.com/en/](http://shestakovyachtsales.com/en/)

## Telephones

---

USA: +1(954)274-4435

## Office hours

---

Monday – Saturday: **9:00 - 21:00** EDT

Sunday: **closed**

## Address

---



Harbour Towne Marina, 850 NE 3rd St,  
STE 213, Dania, FL 33004