

SEA YA — TOLLYCRAFT



Builder: TOLLYCRAFT

Year Built: 1990

Model: Motor Yacht

Price: PRICE ON APPLICATION

Location: United States

LOA: 44' 2" (13.46mm)

Beam: 14.66

Max Draft: 3' 6" (1.07mm)

Our experienced yacht broker, Andrey Shestakov, will help you choose and buy a yacht that best suits your needs **Sea Ya — TOLLYCRAFT** from our catalogue. Presently, at Shestakov Yacht Sales Inc., we have a wide variety of yachts available on our sale's list. We also work in close contact with all the big yacht manufacturers from all over the world.

If you would like to buy a yacht **Sea Ya — TOLLYCRAFT** or would like help answering any questions concerning purchasing, selling or chartering a yacht, please call **+1(954)274-4435**

TABLE OF CONTENTS

TABLE OF CONTENTS	2
SPECIFICATIONS	5
Overview	5
Basic Information	5
Dimensions	5
Speed, Capacities and Weight	5
Accommodations	5
Hull and Deck Information	6
Engine Information	6
PHOTOS	7
2	7
3	7
4	7
5	7
6	7
7	7
8	8
9	8
10	8
11	8
12	8
13	8
14	9
15	9
16	9
17	9
18	9
19	9

20	10
21	10
22	10
23	10
24	10
25	10
26	11
27	11
28	11
29	11
30	11
31	11
32	12
33	12
34	12
35	12
36	12
37	12
38	13
39	13
40	13
41	13
42	13
43	13
44	14
45	14
46	14
47	14
48	14

CONTACTS	15
-----	-----
Contact details	15
-----	-----
Telephones	15
-----	-----
Office hours	15
-----	-----
Address	15
-----	-----

SPECIFICATIONS

Overview

Here is a great opportunity to pick up a very clean and well maintained Diesel powered Aft Cabin Cockpit Motoryacht without breaking the bank. She features lots of interior and exterior living space and is a good candidate for a Live-aboard, Great Looper or a Coastal/Bahama Cruiser. She is powered by the dependable and bulletproof Detroit Diesels and includes a new 9 Kw Kohler Generator in sound box. Call today and start packing your duffle bag for some quality time on the water!

Basic Information

Category: Motor Yacht

Sub Category: Aft Cabin

Model Year: 1990

Year Built: 1990

Country: United States

Dimensions

LOA: 44' 2" (13.46mm)

Beam: 14.66

Max Draft: 3' 6" (1.07mm)

Speed, Capacities and Weight

Water Capacity: 70 Gallons

Holding Tank: 25 Gal Gallons

Fuel Capacity: 750 Gal Gallons

Accommodations

Total Cabins: 2

Total Heads: 2

Hull and Deck Information

Hull Material: Fiberglass

Engine Information

Engines: 2

Manufacturer: Detroit Diesel

Engine Type: Inboard

Fuel Type: Diesel

PHOTOS

2



3



4



5



6



7



8



9



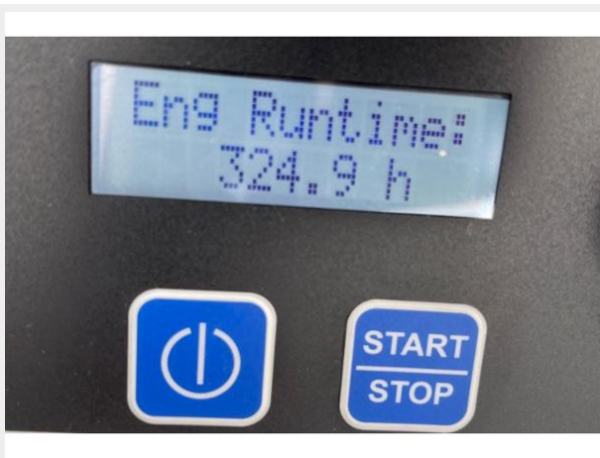
10



11



12



13



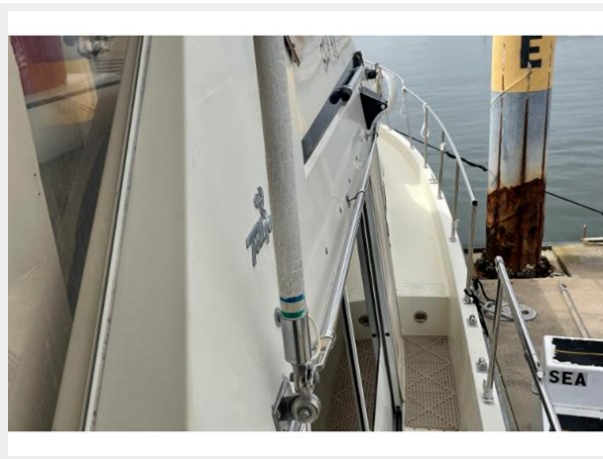
14



15



16



17



18



19



20



21



22



23



24



25



26



27



28



29



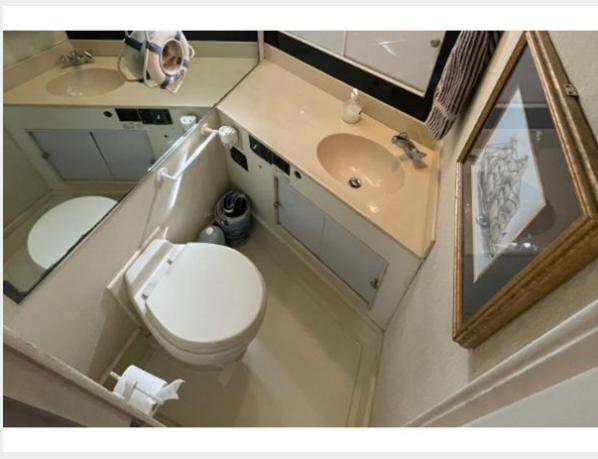
30



31



32



33



34



35



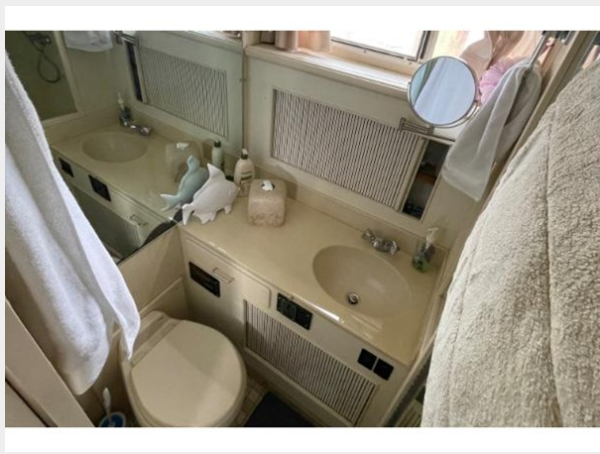
36



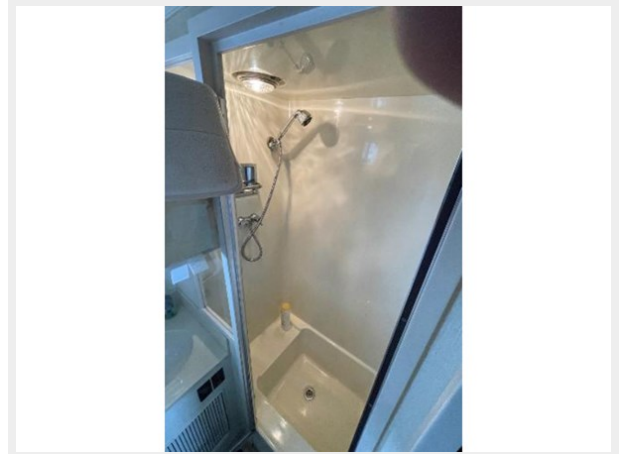
37



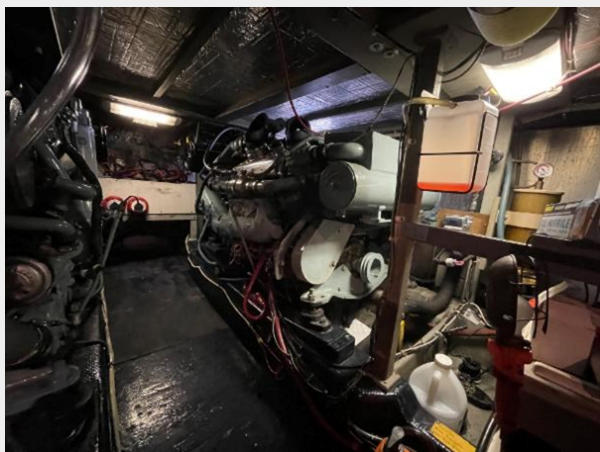
38



39



40



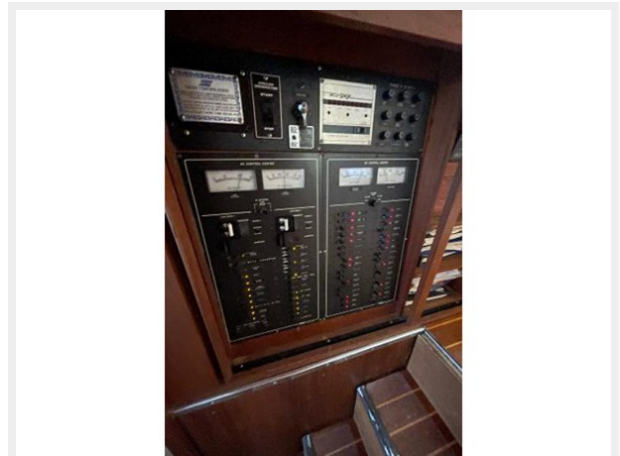
41



42



43



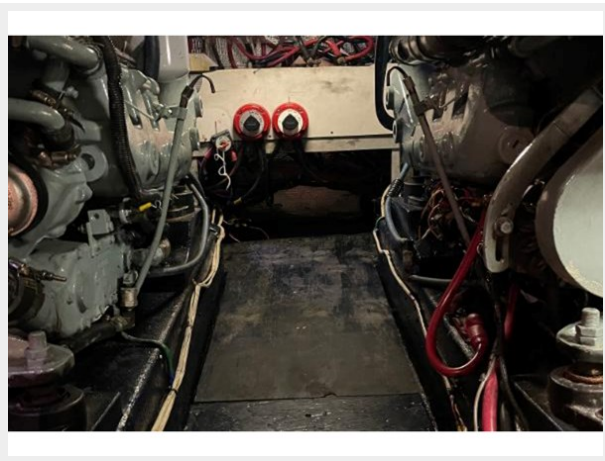
44



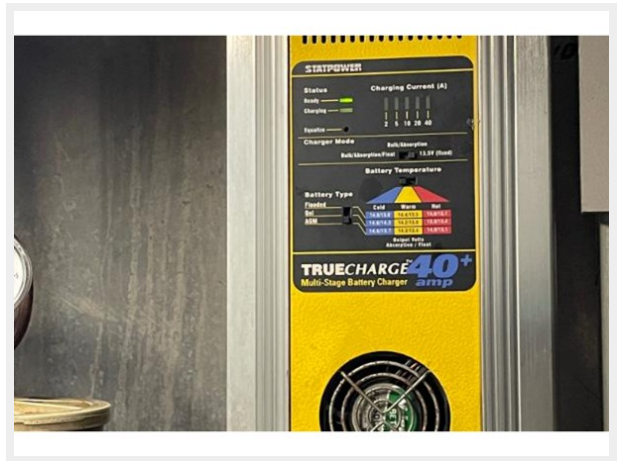
45



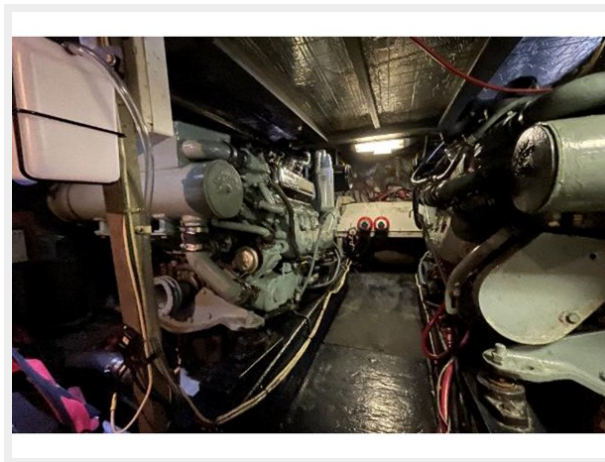
46



47



48



CONTACTS

Andrey Shestakov, leading yacht broker of the sales department of Shestakov Yacht Sales Inc. Shestakov Yacht Sales Inc., the official representative of the Miami/Fort Lauderdale FL headquarters.

Contact details

Email: andrey@shestakovyachtsales.com

Web: shestakovyachtsales.com/en/

Telephones

USA: +1(954)274-4435

Office hours

Monday – Saturday: **9:00 - 21:00** EDT

Sunday: **closed**

Address



Harbour Towne Marina, 850 NE 3rd St,
STE 213, Dania, FL 33004