

## SUSAN E II — PACIFIC SEACRAFT



**Builder:** PACIFIC SEACRAFT

**Year Built:** 1993

**Model:** Cutter

**Price:** PRICE ON APPLICATION

**LOA:** 44' 1" (13.44mm)

**Beam:** 12.5

**Min Draft:** 5' 6" (1.68mm)

**Max Draft:** 5' 7" (1.7mm)

Our experienced yacht broker, Andrey Shestakov, will help you choose and buy a yacht that best suits your needs **Susan E II — PACIFIC SEACRAFT** from our catalogue. Presently, at Shestakov Yacht Sales Inc., we have a wide variety of yachts available on our sale's list. We also work in close contact with all the big yacht manufacturers from all over the world.

If you would like to buy a yacht **Susan E II — PACIFIC SEACRAFT** or would like help answering any questions concerning purchasing, selling or chartering a yacht, please call **+1(954)274-4435**

# TABLE OF CONTENTS

TABLE OF CONTENTS	2
SPECIFICATIONS	5
Overview	5
Basic Information	5
Dimensions	5
Speed, Capacities and Weight	5
Accommodations	6
Hull and Deck Information	6
Engine Information	6
PHOTOS	7
full mast profile	7
Profile	7
overhead profile	7
overhead profile	7
stern	8
Stern	8
profile	8
port quarter	8
winches	8
Entrance/winches	8
winches	9
mainsail	9
mainsail cradle	9
mainsail cradle	9
self furling headsail	10
Helm	10
seating	10
"overwater seating" on custom stainless steel pulpit	10

forward cabin	11
2010 Walker Bay RIB with 15hp Yamaha	11
forward head	11
forward cabin	11
dinnette	12
salon starboard side	12
Salon	12
Galley looking forward	12
Galley looking to starboard	13
Nav table	13
Cook top	13
Full Galley	13
Nav Table/Galley	14
Looking forward from Nav table	14
Galley/Sal	14
Galley	14
Galley looking aft	14
Galley	14
Galley looking aft	15
Nav station	15
Aft cabin/day head	15
Aft Cabin	15
Aft Cabin	16
Aft Cabin	16
Aft Cabin from head	16
Aft head	16
Aft head shower	17
CONTACTS	18
Contact details	18

---

Telephones	18
Office hours	18
Address	18

---

# SPECIFICATIONS

---

## Overview

---

The Pacific Seacraft Crealock 44 is a timeless traditional design built for serious “Blue Water” cruising. The “SUSAN E II” is a rare one-owner yacht that has had loving maintenance and offers many luxury options like the Scheel keel with 5’3” draft, 62’ mast height for intercostal, generator and 3 zone air conditioning, holding plate refrigeration, and freezer, water maker, custom stern davit with seating, all self-tailing winches, sail handling lead to the cockpit, furling headsails and fully battened main sail.

She offers a generous layout with an aft cabin private head and separate stall shower, a large galley, and a forward stateroom with a private head and shower. The interior joinery is hand-rubbed Burmese teak and bronze hardware abounds.

The classic exterior offers beautiful varnished teak and stainless port lights with plenty of quality deck hardware. Truly a yacht to feel proud to own and enjoy on any ocean or island. Easy to inspect in Fort Lauderdale.

## Basic Information

---

**Category:** Cutter

**Model Year:** 1993

**Year Built:** 1993

## Dimensions

---

**LOA:** 44' 1" (13.44mm)

**LWL:** 37' 10" (11.53mm)

**Beam:** 12.5

**Min Draft:** 5' 6" (1.68mm)

**Max Draft:** 5' 7" (1.7mm)

## Speed, Capacities and Weight

---

**Gross Tonnage:** 17 Pounds

**Water Capacity:** 104 Gallons

**Holding Tank:** 38 Gal Gallons

**Fuel Capacity:** 76 Gal Gallons

---

## Accommodations

---

**Total Cabins:** 2

**Total Berths:** 4

**Sleeps:** 4

**Total Heads:** 2

---

## Hull and Deck Information

---

**Hull Material:** Fiberglass

**Deck Material:** Fiberglass

**Hull Configuration:** Monohull

**Hull Color:** Navy blue

**Hull Designer:** William Crealock

**Exterior Designer:** William Crealock

**Interior Designer:** William Crealock

---

## Engine Information

---

**Engines:** 1

**Manufacturer:** Yanmar

**Engine Type:** Inboard

**Fuel Type:** Diesel

# PHOTOS

**Profile**



**full mast profile**



**overhead profile**



**overhead profile**





**stern**



**Stern**



**port quarter**



**profile**



**winches**



**Entrance/winches**





**winches**



**mainsail**



**mainsail cradle**



**mainsail cradle**



**self furling headsail**



**Helm**



**"overwater seating" on custom stainless steel pulpit**



**seating**





**2010 Walker Bay RIB with 15hp Yamaha**



**forward cabin**



**forward cabin**



**forward head**



**dinette**



**salon starboard side**



**Salon**



**Galley looking forward**





**Galley looking to starboard**



**Nav table**



**Cook top**



**Full Galley**





**Nav Table/Galley**



**Looking forward from Nav table**



**Galley/Sal**



**Galley**



**Galley looking aft**



**Galley**



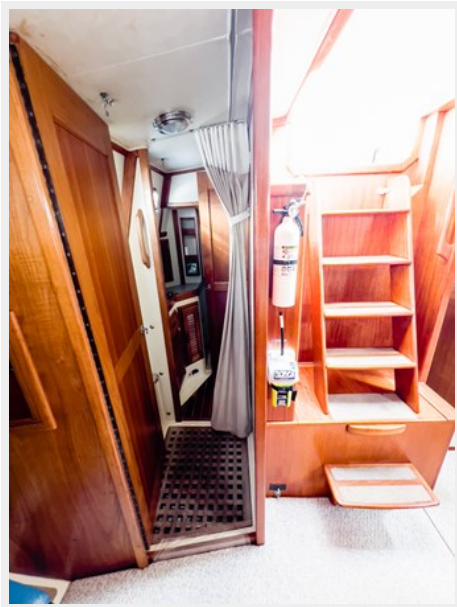
**Galley looking aft**



**Nav station**



**Aft cabin/day head**



**Aft Cabin**

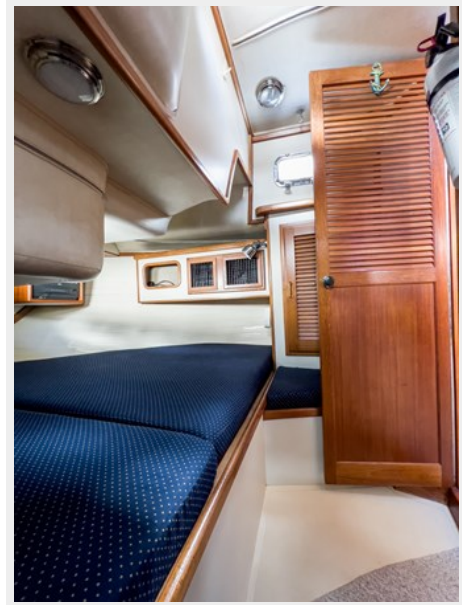




**Aft Cabin**



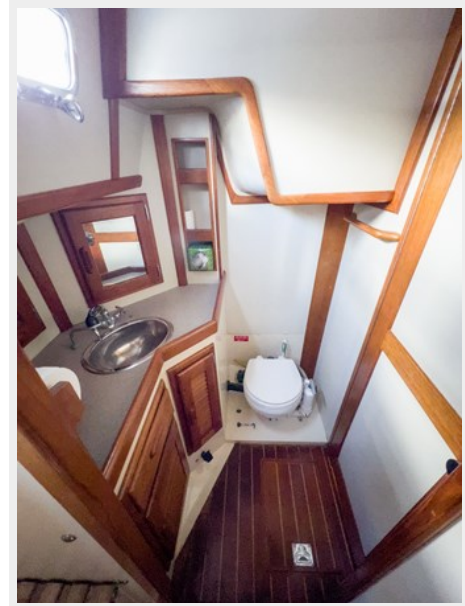
**Aft Cabin**



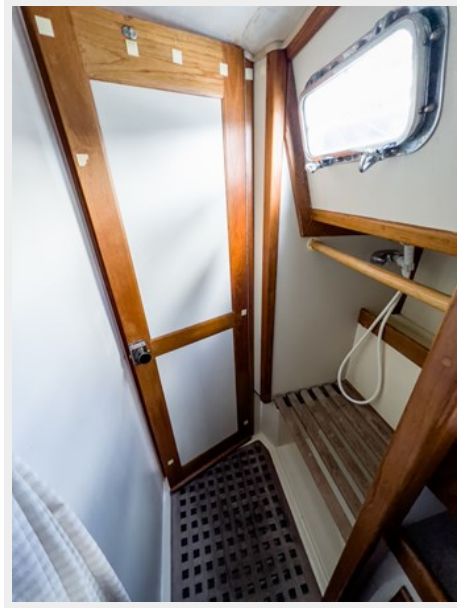
**Aft Cabin from head**



**Aft head**



### Aft head shower



# CONTACTS

---

Andrey Shestakov, leading yacht broker of the sales department of Shestakov Yacht Sales Inc. Shestakov Yacht Sales Inc., the official representative of the Miami/Fort Lauderdale FL headquarters.

## Contact details

---

Email: [andrey@shestakovyachtsales.com](mailto:andrey@shestakovyachtsales.com)

Web: [shestakovyachtsales.com/en/](http://shestakovyachtsales.com/en/)

## Telephones

---

USA: +1(954)274-4435

## Office hours

---

Monday – Saturday: **9:00 - 21:00** EDT

Sunday: **closed**

## Address

---



Harbour Towne Marina, 850 NE 3rd St,  
STE 213, Dania, FL 33004