

## A LAZEE DAY — BOSTON WHALER



**Builder:** BOSTON WHALER

**Year Built:** 2017

**Model:** center\_console

**Price:** PRICE ON APPLICATION

**Location:** United States

**LOA:** 42' (12.8mm)

**Beam:** 13

**Min Draft:** 2' 4" (0.71mm)

**Max Draft:** 2' 6" (0.76mm)

**Cruise Speed:** 32 Knots Kts. (37 MPH)

**Max Speed:** 45 Knots Kts. (52 MPH)

Our experienced yacht broker, Andrey Shestakov, will help you choose and buy a yacht that best suits your needs **A LAZEE DAY — BOSTON WHALER** from our catalogue. Presently, at Shestakov Yacht Sales Inc., we have a wide variety of yachts available on our sale's list. We also work in close contact with all the big yacht manufacturers from all over the world.

If you would like to buy a yacht **A LAZEE DAY — BOSTON WHALER** or would like help answering any questions concerning purchasing, selling or chartering a yacht, please call **+1(954)274-4435**

# TABLE OF CONTENTS

---

TABLE OF CONTENTS	2
SPECIFICATIONS	5
Basic Information	5
Dimensions	5
Speed, Capacities and Weight	5
Accommodations	5
Hull and Deck Information	5
Engine Information	6
PHOTOS	7
Bow Area	7
Windlass Detail	7
Folding Backrests	7
Below Deck Storage	7
Bow Lounge	7
Storage Below Bow Lounge	7
Backrest for Bow Lounge	8
Spacious Side Decks	8
Trolling Seats	8
Helm	8
Helm	8
Helm Overhead	8
Seakeeper Controls	9
MFD as Plotter	9
MFD as Fishfinder	9
MFD as CZone Control	9
Push to Start	9
Joystick with Skyhook	9
Helm Seats	10

Leaning Function	10
Helm Step	10
Engine Hours	10
Hardtop Equipment	10
Second Row Seating	10
Second Row Seating AC	11
Summer Kitchen	11
Grill, Sink, etc.	11
SS Fridge	11
Retractable Awning	11
Cabin Looking Forward	11
Table Up Position	12
Cabin Looking Aft	12
Galley	12
Overhead Dead Light	12
Microwave	12
Head	12
Electrical Panel	13
Portside Door	13
Transom Area	13
Livewell	13
Aft Seat Up	13
Aft Seat	13
Hot and Cold Shower	14
Aft Transom Door	14
Fwd Covers	14
Fwd Table and Seat Covers	14
Mechanical Area	14
12kw Generator	14

---

Seakeeper Gyro	15
Stbd Side of Mechanical Area	15
Portside of Mechanical Area	15
Transom	15
Stern Shot	15
Alternate Profile	15
CONTACTS	16
Contact details	16
Telephones	16
Office hours	16
Address	16

---

# SPECIFICATIONS

---

## Basic Information

---

**Category:** center\_console

**Sub Category:** Center Console

**Model Year:** 2018

**Year Built:** 2017

**Country:** United States

## Dimensions

---

**LOA:** 42' (12.8mm)

**Beam:** 13

**Min Draft:** 2' 4" (0.71mm)

**Max Draft:** 2' 6" (0.76mm)

## Speed, Capacities and Weight

---

**Cruise Speed:** 32 Knots Kts. (37 MPH)

**Cruise Speed Range:** 330

**Max Speed:** 45 Knots Kts. (52 MPH)

**Water Capacity:** 60 Gallons

**Holding Tank:** 20 Gal Gallons

**Fuel Capacity:** 600 Gal Gallons

## Accommodations

---

**Total Cabins:** 1

**Total Heads:** 1

## Hull and Deck Information

---

**Hull Material:** Fiberglass

**Hull Configuration:** Deep Vee

**Hull Designer:** Boston Whaler

---

## Engine Information

---

**Engines:** 4

**Manufacturer:** Mercury

**Engine Type:** Outboard

**Fuel Type:** Gas/Petrol

# PHOTOS

**Bow Area**



**Windlass Detail**



**Folding Backrests**



**Below Deck Storage**



**Bow Lounge**



**Storage Below Bow Lounge**



**Backrest for Bow Lounge**



**Spacious Side Decks**



**Trolling Seats**



**Helm**



**Helm**



**Helm Overhead**





### Seakeeper Controls



### MFD as Plotter



### MFD as Fishfinder



### MFD as CZone Control



### Push to Start



### Joystick with Skyhook



### Helm Seats



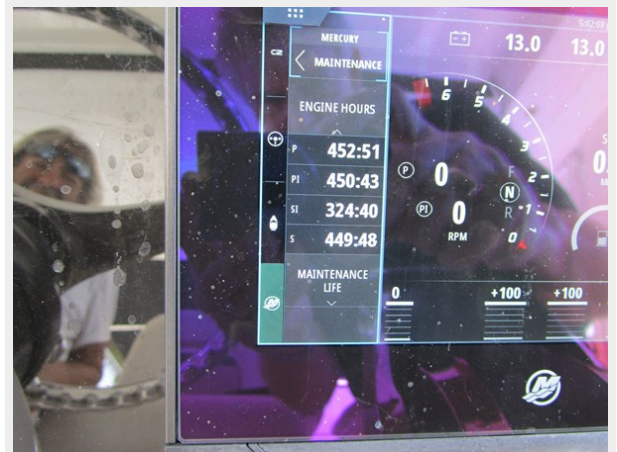
### Leaning Function



### Helm Step



### Engine Hours



### Hardtop Equipment



### Second Row Seating



**Second Row Seating AC**



**Summer Kitchen**



**Grill, Sink, etc.**



**SS Fridge**



**Retractable Awning**



**Cabin Looking Forward**



**Table Up Position**



**Cabin Looking Aft**



**Galley**



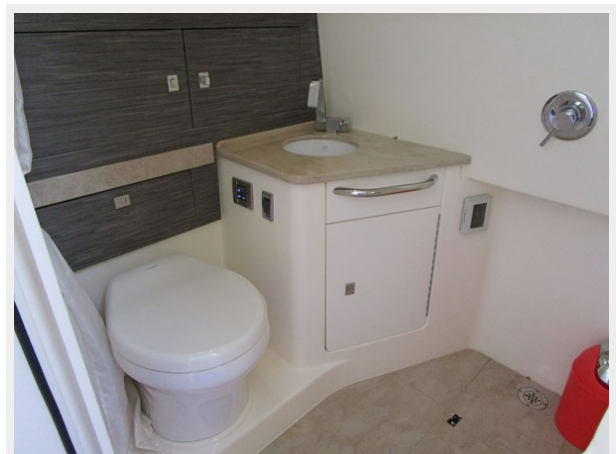
**Overhead Dead Light**



**Microwave**



**Head**



**Electrical Panel**



**Portside Door**



**Transom Area**



**Livewell**



**Aft Seat Up**



**Aft Seat**



**Hot and Cold Shower**



**Aft Transom Door**



**Fwd Covers**



**Fwd Table and Seat Covers**



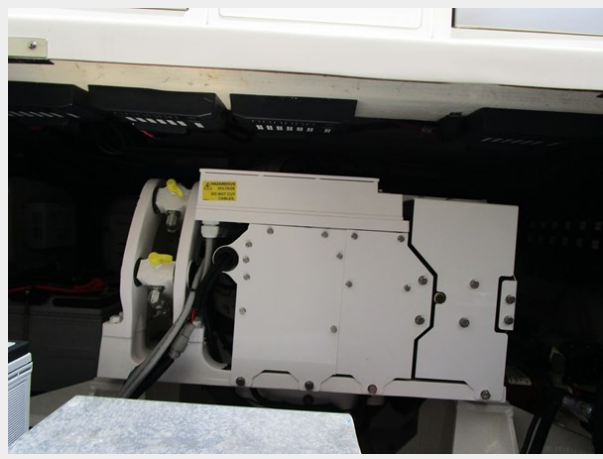
**Mechanical Area**



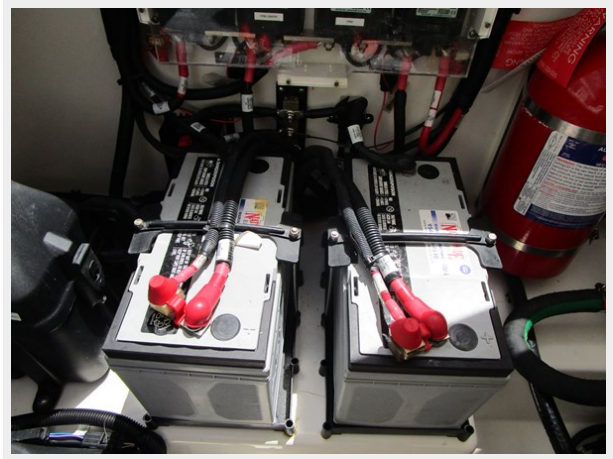
**12kw Generator**



**Seakeeper Gyro**



**Stbd Side of Mechanical Area**



**Portside of Mechanical Area**



**Transom**



**Stern Shot**



**Alternate Profile**



---

# CONTACTS

---

Andrey Shestakov, leading yacht broker of the sales department of Shestakov Yacht Sales Inc. Shestakov Yacht Sales Inc., the official representative of the Miami/Fort Lauderdale FL headquarters.

---

## Contact details

---

Email: **andrey@shestakovyachtsales.com**

Web: [shestakovyachtsales.com/en/](http://shestakovyachtsales.com/en/)

---

## Telephones

---

USA: +1(954)274-4435

---

## Office hours

---

Monday – Saturday: **9:00 - 21:00** EDT

Sunday: **closed**

---

## Address

---



Harbour Towne Marina, 850 NE 3rd St,  
STE 213, Dania, FL 33004