

DIAMOND GIRL — NOVA MARINE



Builder: NOVA MARINE

Year Built: 1990

Model: Trawler Yacht

Price: PRICE ON APPLICATION

Location: United States

LOA: 36' (10.97mm)

Beam: 12.58

Max Draft: 3' 6" (1.07mm)

Our experienced yacht broker, Andrey Shestakov, will help you choose and buy a yacht that best suits your needs **Diamond Girl — NOVA MARINE** from our catalogue. Presently, at **Shestakov Yacht Sales Inc.**, we have a wide variety of yachts available on our sale's list. We also work in close contact with all the big **yacht manufacturers** from all over the world.

If you would like to buy a yacht **Diamond Girl — NOVA MARINE** or would like help answering any questions concerning purchasing, selling or chartering a yacht, please call **+1(954)274-4435**

TABLE OF CONTENTS

TABLE OF CONTENTS	2
SPECIFICATIONS	5
Overview	5
Basic Information	5
Dimensions	5
Speed, Capacities and Weight	5
Accommodations	5
Hull and Deck Information	6
Engine Information	6
PHOTOS	7
2	7
3	7
4	7
5	7
6	7
7	7
8	8
9	8
10	8
11	8
12	8
13	8
14	9
15	9
16	9
17	9
18	9
19	9

20	10
21	10
22	10
23	10
24	10
25	10
26	11
27	11
28	11
29	11
30	11
31	11
32	12
33	12
34	12
35	12
36	12
37	12
38	13
39	13
40	13
41	13
42	13
43	13
44	14
45	14
46	14
47	14
48	14

49	14
CONTACTS	15
Contact details	15
Telephones	15
Office hours	15
Address	15

SPECIFICATIONS

Overview

Diamond Girl is a One Owner Customized Built Nova, she was built with many upgrades!

She offers 2 state rooms, a sundeck, flybridge, and a lower helm with full controls and gauges.

She is powered with reliable Twin Cummings Diesels ,and a 8KW Northern Lights Generator!

She will make a great cruiser, live aboard, or great loop boat boat!

Basic Information

Category: Trawler Yacht

Model Year: 1990

Year Built: 1990

Country: United States

Dimensions

LOA: 36' (10.97mm)

Beam: 12.58

Max Draft: 3' 6" (1.07mm)

Speed, Capacities and Weight

Water Capacity: 150 Gallons

Holding Tank: 40 Gal Gallons

Fuel Capacity: 300 Gal Gallons

Accommodations

Total Cabins: 3

Total Heads: 2

Hull and Deck Information

Hull Material: Fiberglass

Engine Information

Engines: 2

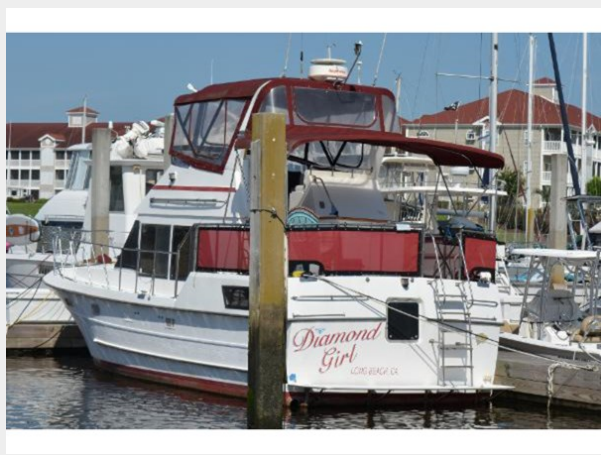
Manufacturer: Cummings

Engine Type: Inboard

Fuel Type: Diesel

PHOTOS

2



3



4



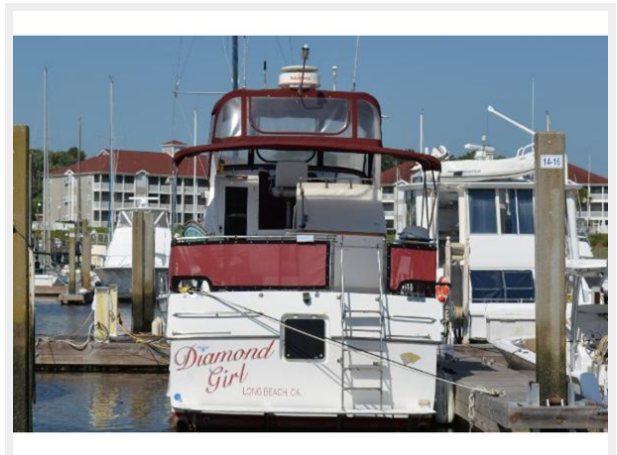
5



6



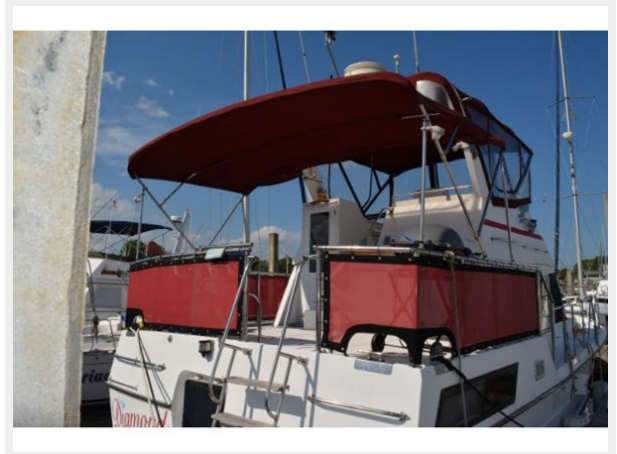
7



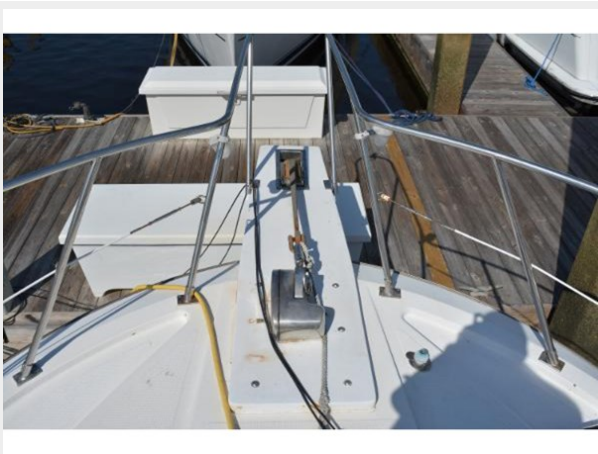
8



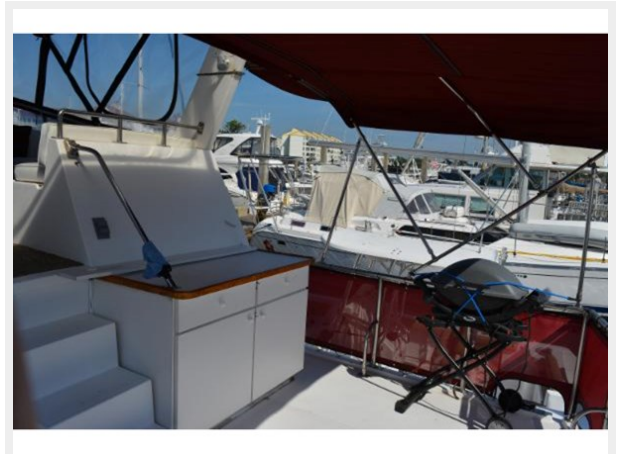
9



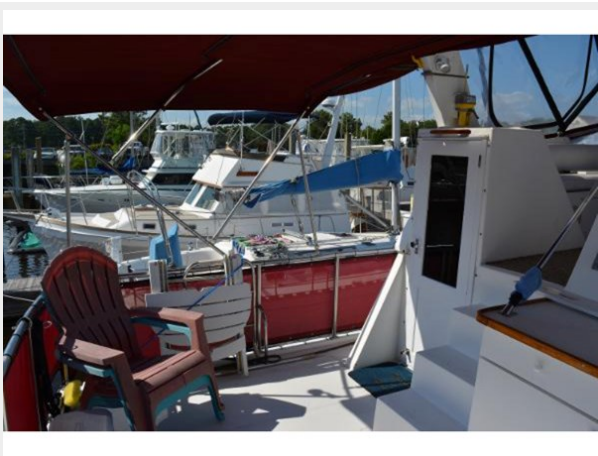
10



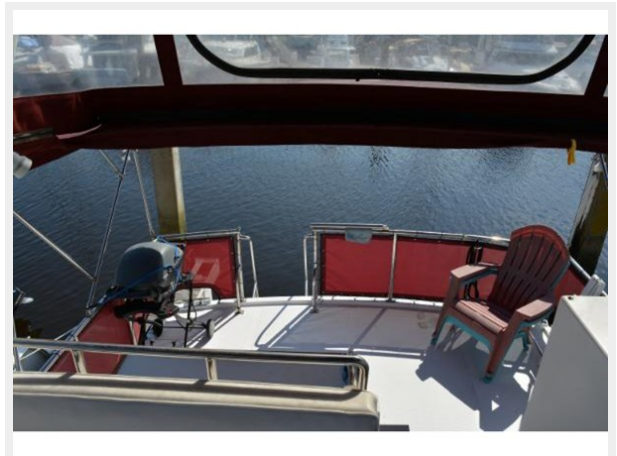
11



12



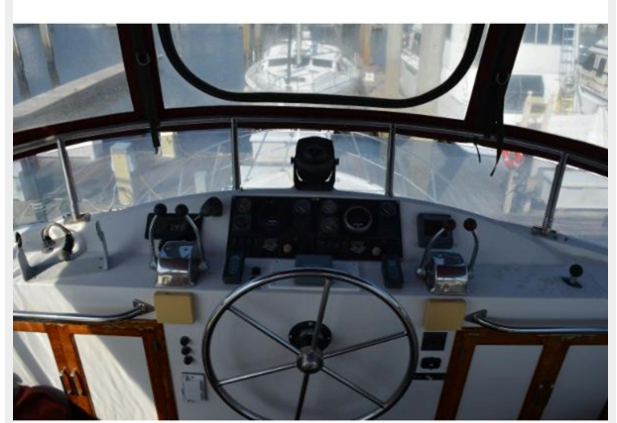
13



14



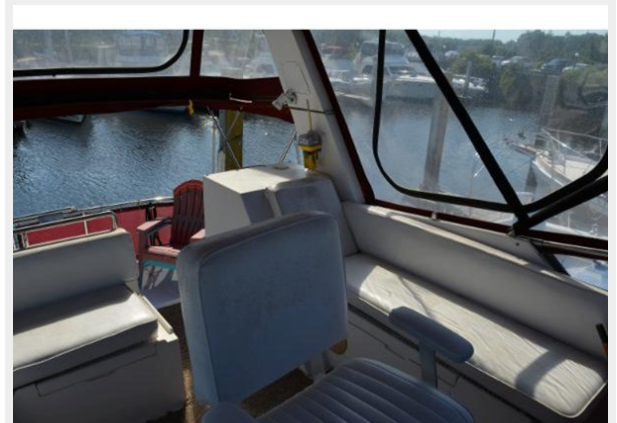
15



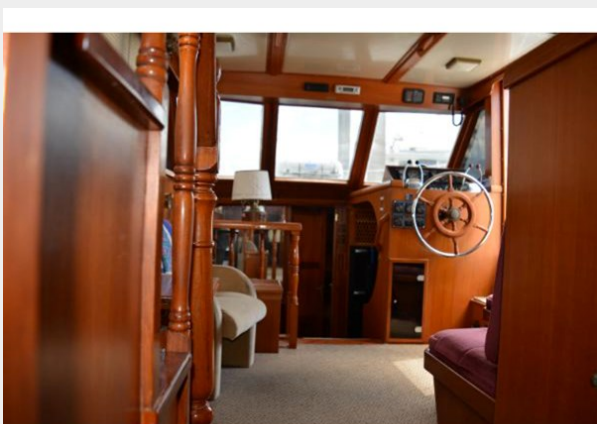
16



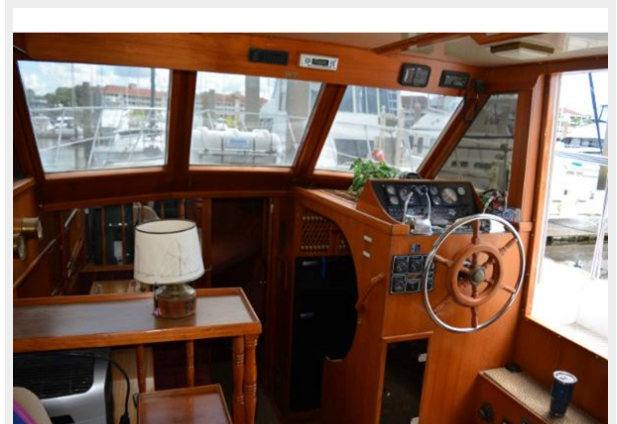
17



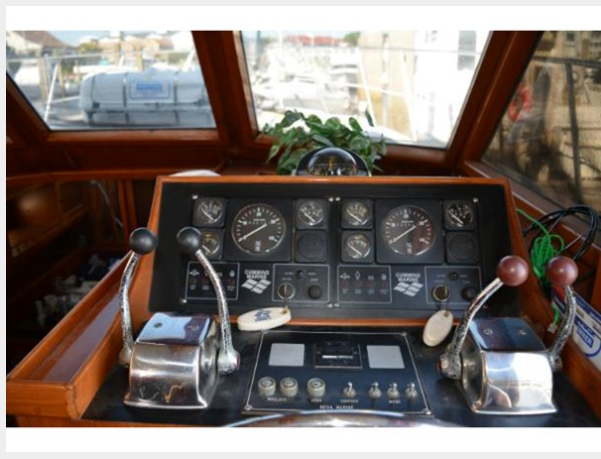
18



19



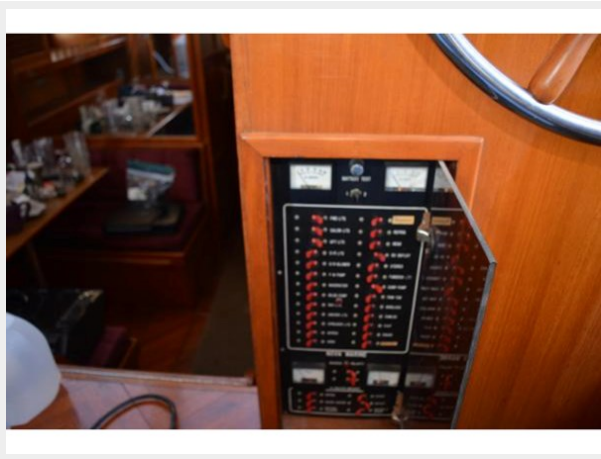
20



21



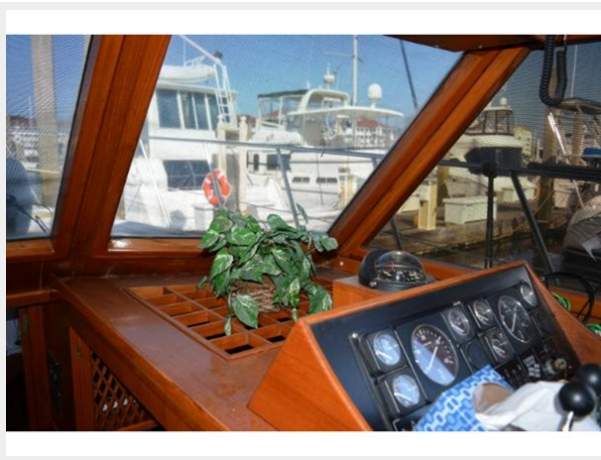
22



23



24



25



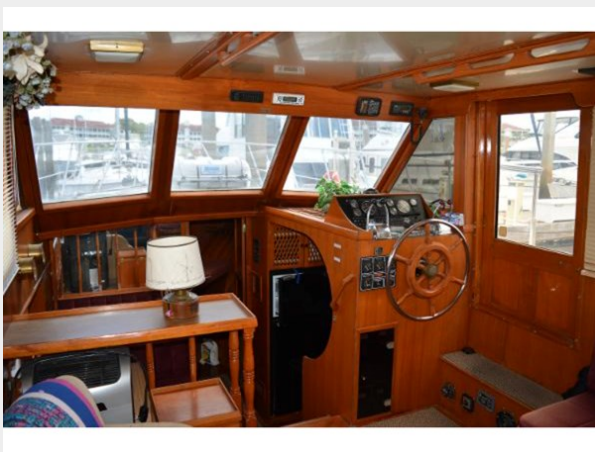
26



27



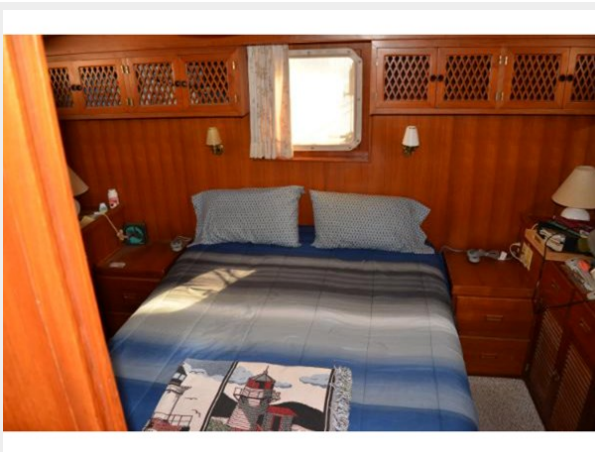
28



29



30



31



32



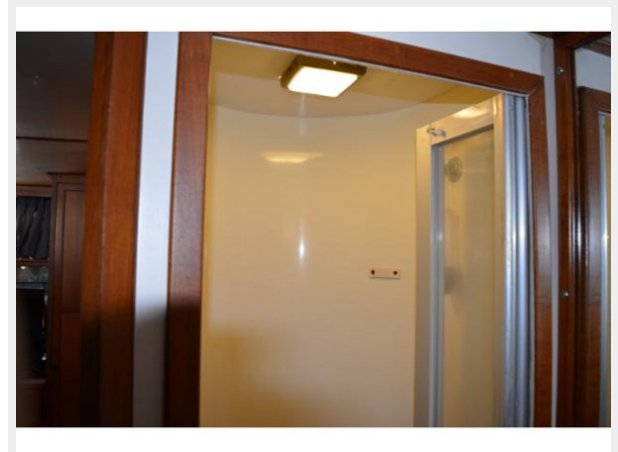
33



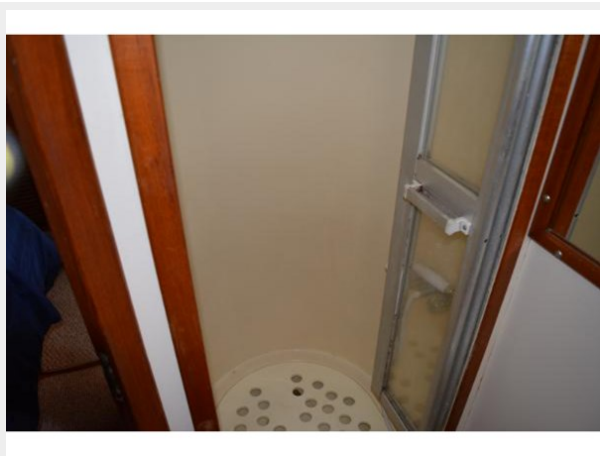
34



35



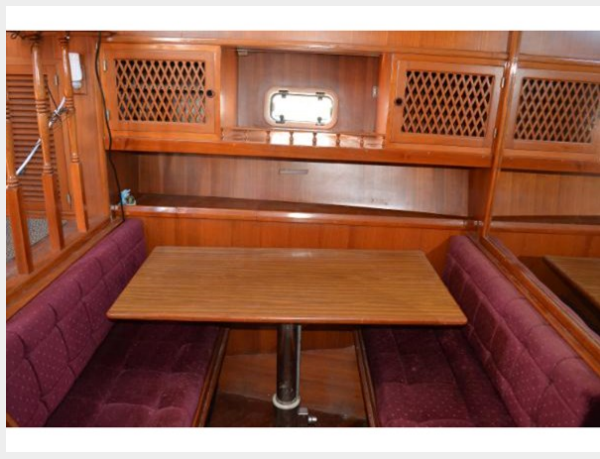
36



37



38



39



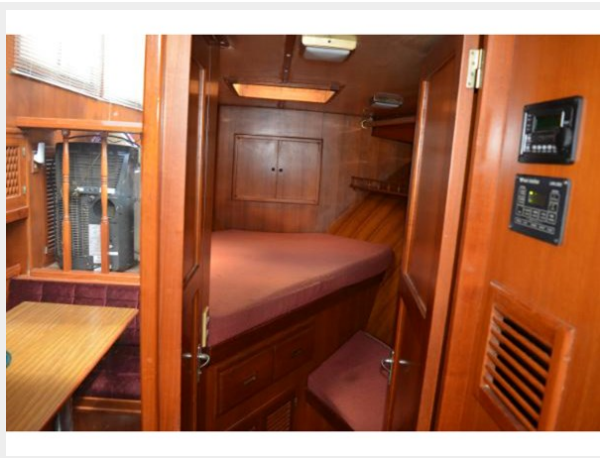
40



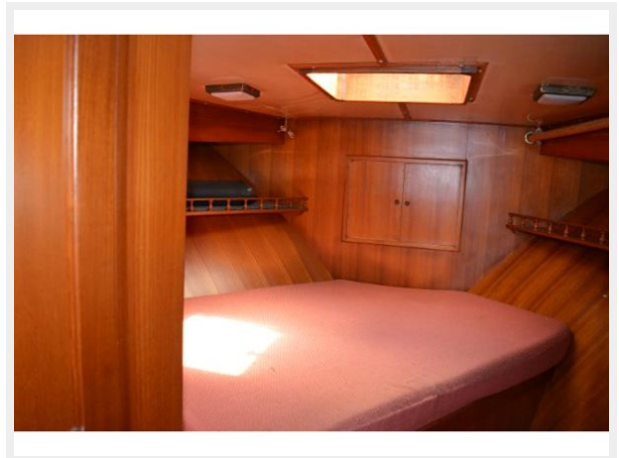
41



42



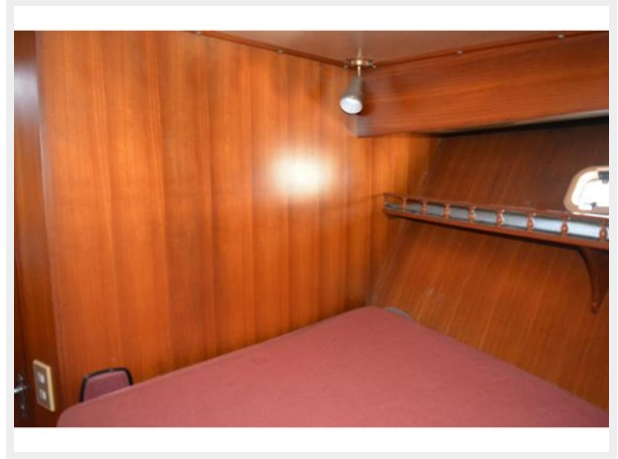
43



44



45



46



47



48



49



CONTACTS

Andrey Shestakov, leading yacht broker of the sales department of Shestakov Yacht Sales Inc. Shestakov Yacht Sales Inc., the official representative of the Miami/Fort Lauderdale FL headquarters.

Contact details

Email: **andrey@shestakovyachtsales.com**

Web: shestakovyachtsales.com/en/

Telephones

USA: **+1(954)274-4435**

Office hours

Monday – Saturday: **9:00 - 21:00** EDT

Sunday: **closed**

Address



Harbour Towne Marina, 850 NE 3rd St, STE 213, Dania, FL 33004