

SEA TIGER — VIKING



Builder: VIKING

Year Built: 1996

Model: Motor Yacht

Price: PRICE ON APPLICATION

Location: United States

LOA: 60' (18.29mm)

Beam: 17.41

Max Draft: 4' 10" (1.47mm)

Our experienced yacht broker, Andrey Shestakov, will help you choose and buy a yacht that best suits your needs **Sea Tiger — VIKING** from **our catalogue**. Presently, at **Shestakov Yacht Sales Inc.**, we have a wide variety of yachts available on **our sale's list**. We also work in close contact with all the big **yacht manufacturers** from all over the world.

If you would like to buy a yacht **Sea Tiger — VIKING** or would like help answering any questions concerning purchasing, selling or chartering a yacht, please call **+1(954)274-4435**

TABLE OF CONTENTS

TABLE OF CONTENTS	2
SPECIFICATIONS	7
Overview	7
Basic Information	7
Dimensions	7
Speed, Capacities and Weight	7
Accommodations	7
Hull and Deck Information	7
Engine Information	8
PHOTOS	9
8414524_20220805071914762_1_XLARGE	9
8414524_20220805071934516_1_XLARGE	9
8414524_20220805071941853_1_XLARGE	9
8414524_20220805072025028_1_XLARGE	9
8414524_20220805072054434_1_XLARGE	9
8414524_20220805072039539_1_XLARGE	9
8414524_20220805072031823_1_XLARGE	10
8414524_20220805072000647_1_XLARGE	10
8414524_20220805072101597_1_XLARGE	10
8414524_20220805071955690_1_XLARGE	10
8414524_20220812100725865_1_XLARGE	10
8414524_20220812100718954_1_XLARGE	10
8414524_20220812100715813_1_XLARGE	11
8414524_20220812100712337_1_XLARGE	11
8414524_20220812100722150_1_XLARGE	11
8414524_20220812100729617_1_XLARGE	11
8414524_20220812100754371_1_XLARGE	11
8414524_20220812100742028_1_XLARGE	11

8414524_20220812100745994_1_XLARGE	12
8414524_20220812100733945_1_XLARGE	12
8414524_20220812100806627_1_XLARGE	12
8414524_20220812100810214_1_XLARGE	12
8414524_20220812100832263_1_XLARGE	12
8414524_20220812100828566_1_XLARGE	12
8414524_20220812100825221_1_XLARGE	13
8414524_20220812100814131_1_XLARGE	13
8414524_20220812100836526_1_XLARGE	13
8414524_20220812100818104_1_XLARGE	13
8414524_20220812100821231_1_XLARGE	13
8414524_20220812100841311_1_XLARGE	13
8414524_20220812100737829_1_XLARGE	14
8414524_20220812100758740_1_XLARGE	14
8414524_20220812100845408_1_XLARGE	14
8414524_20220812100900645_1_XLARGE	14
8414524_20220812100852515_1_XLARGE	14
8414524_20220812100849598_1_XLARGE	14
8414524_20220812100856525_1_XLARGE	15
8414524_20220812100907845_1_XLARGE	15
8414524_20220812100903780_1_XLARGE	15
8414524_20220812100911664_1_XLARGE	15
8414524_20220812100924907_1_XLARGE	15
8414524_20220812100919020_1_XLARGE	15
8414524_20220812101110170_1_XLARGE	16
8414524_20220812100956380_1_XLARGE	16
8414524_20220812101004939_1_XLARGE	16
8414524_20220812101012841_1_XLARGE	16
8414524_20220812101025787_1_XLARGE	16

8414524_20220812101117427_1_XLARGE	16
8414524_20220812101037940_1_XLARGE	17
8414524_20220812101103603_1_XLARGE	17
8414524_20220812101044501_1_XLARGE	17
8414524_20220812101031680_1_XLARGE	17
8414524_20220812101056971_1_XLARGE	17
8414524_20220812101123593_1_XLARGE	17
8414524_20220812101137466_1_XLARGE	18
8414524_20220812101130084_1_XLARGE	18
8414524_20220812101205942_1_XLARGE	18
8414524_20220812101200036_1_XLARGE	18
8414524_20220812101219353_1_XLARGE	19
8414524_20220812101213183_1_XLARGE	19
8414524_20220812101143723_1_XLARGE	19
8414524_20220812101153511_1_XLARGE	19
8414524_20220812101225303_1_XLARGE	19
8414524_20220812101232105_1_XLARGE	19
8414524_20220812101238682_1_XLARGE	20
8414524_20220812101252650_1_XLARGE	20
8414524_20220812101259190_1_XLARGE	20
8414524_20220812101245804_1_XLARGE	20
8414524_20220812101305950_1_XLARGE	20
8414524_20220812132520294_1_XLARGE	20
8414524_20220812100937124_1_XLARGE	21
8414524_20220812101317522_1_XLARGE	21
8414524_20220812101322953_1_XLARGE	21
8414524_20220812101328680_1_XLARGE	21
8414524_20220812101340987_1_XLARGE	21
8414524_20220812101419074_1_XLARGE	21

8414524_20220812101347058_1_XLARGE	22
8414524_20220812101353089_1_XLARGE	22
8414524_20220812101406874_1_XLARGE	22
8414524_20220812101412822_1_XLARGE	22
8414524_20220812101424859_1_XLARGE	22
8414524_20220812101400671_1_XLARGE	22
8414524_20220812101430961_1_XLARGE	23
8414524_20220812101434954_1_XLARGE	23
8414524_20220812101515235_1_XLARGE	23
8414524_20220812101450982_1_XLARGE	23
8414524_20220812101511269_1_XLARGE	23
8414524_20220812101442964_1_XLARGE	23
8414524_20220812101455012_1_XLARGE	24
8414524_20220812101503131_1_XLARGE	24
8414524_20220812101459057_1_XLARGE	24
8414524_20220812101446926_1_XLARGE	24
8414524_20220812101507104_1_XLARGE	24
8414524_20220812101519163_1_XLARGE	24
8414524_20220812101542290_1_XLARGE	25
8414524_20220812101552972_1_XLARGE	25
8414524_20220812101559061_1_XLARGE	25
8414524_20220812101546387_1_XLARGE	25
8414524_20220812101523232_1_XLARGE	25
8414524_20220812101531417_1_XLARGE	25
8414524_20220812101538211_1_XLARGE	26
8414524_20220812101527240_1_XLARGE	26
8414524_20220805071921076_1_XLARGE	26
CONTACTS	27
Contact details	27

Telephones	27
Office hours	27
Address	27

SPECIFICATIONS

Overview

Sea Tiger is a beautiful 1996 60' Viking Sport Cruiser CPMY, All New Garmin Electronics Including Chart Plotters, Radar, Autopilot and More. All New Custom Pilothouse Windows, Man Engines Fully Serviced Including All Coolers, Aftercoolers, Manifolds in 2022, 20Kw Onan Generator Full Service Including New Heat Exchanger, This Boat Truly Is Turn Key and Ready To Cruise,

Basic Information

Category: Motor Yacht

Sub Category: Cockpit

Model Year: 1996

Year Built: 1996

Country: United States

Dimensions

LOA: 60' (18.29mm)

Beam: 17.41

Max Draft: 4' 10" (1.47mm)

Speed, Capacities and Weight

Water Capacity: 200 Gallons

Holding Tank: 75 Gal Gallons

Fuel Capacity: 1300 Gal Gallons

Accommodations

Total Cabins: 3

Hull and Deck Information

Hull Material: Fiberglass

Engine Information

Engines: 2

Manufacturer: MAN

Engine Type: Inboard

Fuel Type: Diesel

PHOTOS

8414524_20220805071914762_1_XLARGE 8414524_20220805071934516_1_XLARGE



8414524_20220805071941853_1_XLARGE 8414524_20220805072025028_1_XLARGE



8414524_20220805072054434_1_XLARGE 8414524_20220805072039539_1_XLARGE



8414524_20220805072031823_1_XLARGE 8414524_20220805072000647_1_XLARGE



8414524_20220805072101597_1_XLARGE 8414524_20220805071955690_1_XLARGE



8414524_20220812100725865_1_XLARGE 8414524_20220812100718954_1_XLARGE



8414524_20220812100715813_1_XLARGE 8414524_20220812100712337_1_XLARGE



8414524_20220812100722150_1_XLARGE 8414524_20220812100729617_1_XLARGE



8414524_20220812100754371_1_XLARGE 8414524_20220812100742028_1_XLARGE



8414524_20220812100745994_1_XLARGE 8414524_20220812100733945_1_XLARGE



8414524_20220812100806627_1_XLARGE 8414524_20220812100810214_1_XLARGE



8414524_20220812100832263_1_XLARGE 8414524_20220812100828566_1_XLARGE



8414524_20220812100825221_1_XLARGE 8414524_20220812100814131_1_XLARGE



8414524_20220812100836526_1_XLARGE 8414524_20220812100818104_1_XLARGE



8414524_20220812100821231_1_XLARGE 8414524_20220812100841311_1_XLARGE



8414524_20220812100737829_1_XLARGE 8414524_20220812100758740_1_XLARGE



8414524_20220812100845408_1_XLARGE 8414524_20220812100900645_1_XLARGE



8414524_20220812100852515_1_XLARGE 8414524_20220812100849598_1_XLARGE



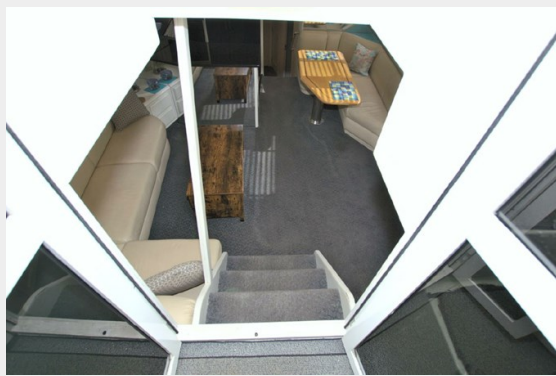
8414524_20220812100856525_1_XLARGE 8414524_20220812100907845_1_XLARGE



8414524_20220812100903780_1_XLARGE 8414524_20220812100911664_1_XLARGE



8414524_20220812100924907_1_XLARGE 8414524_20220812100919020_1_XLARGE



8414524_20220812101110170_1_XLARGE 8414524_20220812100956380_1_XLARGE



8414524_20220812101004939_1_XLARGE 8414524_20220812101012841_1_XLARGE



8414524_20220812101025787_1_XLARGE 8414524_20220812101117427_1_XLARGE



8414524_20220812101037940_1_XLARGE 8414524_20220812101103603_1_XLARGE



8414524_20220812101044501_1_XLARGE 8414524_20220812101031680_1_XLARGE



8414524_20220812101056971_1_XLARGE 8414524_20220812101123593_1_XLARGE



8414524_20220812101137466_1_XLARGE



8414524_20220812101130084_1_XLARGE



8414524_20220812101205942_1_XLARGE 8414524_20220812101200036_1_XLARGE



8414524_20220812101219353_1_XLARGE

8414524_20220812101213183_1_XLARGE



8414524_20220812101143723_1_XLARGE

8414524_20220812101153511_1_XLARGE



8414524_20220812101225303_1_XLARGE 8414524_20220812101232105_1_XLARGE



8414524_20220812101238682_1_XLARGE 8414524_20220812101252650_1_XLARGE



8414524_20220812101259190_1_XLARGE 8414524_20220812101245804_1_XLARGE



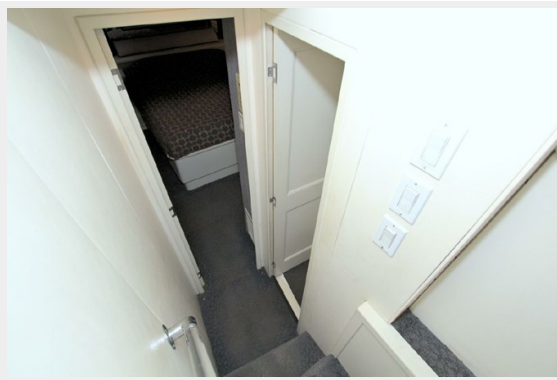
8414524_20220812101305950_1_XLARGE 8414524_20220812132520294_1_XLARGE



8414524_20220812100937124_1_XLARGE 8414524_20220812101317522_1_XLARGE



8414524_20220812101322953_1_XLARGE 8414524_20220812101328680_1_XLARGE



8414524_20220812101340987_1_XLARGE 8414524_20220812101419074_1_XLARGE



8414524_20220812101347058_1_XLARGE 8414524_20220812101353089_1_XLARGE



8414524_20220812101406874_1_XLARGE 8414524_20220812101412822_1_XLARGE



8414524_20220812101424859_1_XLARGE

8414524_20220812101400671_1_XLARGE



8414524_20220812101430961_1_XLARGE



8414524_20220812101434954_1_XLARGE



8414524_20220812101515235_1_XLARGE 8414524_20220812101450982_1_XLARGE



8414524_20220812101511269_1_XLARGE 8414524_20220812101442964_1_XLARGE



8414524_20220812101455012_1_XLARGE 8414524_20220812101503131_1_XLARGE



8414524_20220812101459057_1_XLARGE 8414524_20220812101446926_1_XLARGE



8414524_20220812101507104_1_XLARGE 8414524_20220812101519163_1_XLARGE



8414524_20220812101542290_1_XLARGE 8414524_20220812101552972_1_XLARGE



8414524_20220812101559061_1_XLARGE 8414524_20220812101546387_1_XLARGE



8414524_20220812101523232_1_XLARGE 8414524_20220812101531417_1_XLARGE



8414524_20220812101538211_1_XLARGE 8414524_20220812101527240_1_XLARGE



8414524_20220805071921076_1_XLARGE



CONTACTS

Andrey Shestakov, leading yacht broker of the sales department of Shestakov Yacht Sales Inc. Shestakov Yacht Sales Inc., the official representative of the Miami/Fort Lauderdale FL headquarters.

Contact details

Email: **andrey@shestakovyachtsales.com**

Web: shestakovyachtsales.com/en/

Telephones

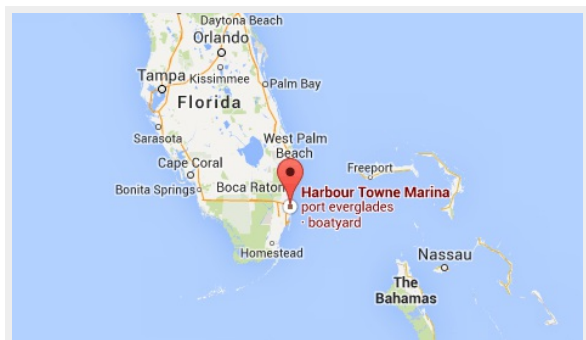
USA: **+1(954)274-4435**

Office hours

Monday – Saturday: **9:00 - 21:00** EDT

Sunday: **closed**

Address



Harbour Towne Marina, 850 NE 3rd St, STE 213, Dania, FL 33004