

## ENTERPRISE — CRUISERS YACHTS



**Builder:** CRUISERS YACHTS

**Year Built:** 2014

**Model:** Cruising Yacht

**Price:** PRICE ON APPLICATION

**Location:** United States

**LOA:** 48' (14.63mm)

**Beam:** 14.5

**Max Draft:** 3' 6" (1.07mm)

Our experienced yacht broker, Andrey Shestakov, will help you choose and buy a yacht that best suits your needs **Enterprise — CRUISERS YACHTS** from our catalogue. Presently, at **Shestakov Yacht Sales Inc.**, we have a wide variety of yachts available on our sale's list. We also work in close contact with all the big **yacht manufacturers** from all over the world.

If you would like to buy a yacht **Enterprise — CRUISERS YACHTS** or would like help answering any questions concerning purchasing, selling or chartering a yacht, please call **+1(954)274-4435**

# TABLE OF CONTENTS

---

TABLE OF CONTENTS	2
SPECIFICATIONS	5
Overview	5
Basic Information	5
Dimensions	5
Speed, Capacities and Weight	5
Accommodations	6
Hull and Deck Information	6
Engine Information	6
PHOTOS	7
8439856_20220809132806809_1_XLARGE	7
8439856_20220809132800766_1_XLARGE	7
8439856_20220809132754840_1_XLARGE	7
8439856_20220809132814585_1_XLARGE	7
8439856_20220809132841243_1_XLARGE	7
8439856_20220809132901225_1_XLARGE	7
8439856_20220809132850370_1_XLARGE	8
8439856_20220809132830720_1_XLARGE	8
8439856_20220809132911238_1_XLARGE	8
8439856_20220809132920796_1_XLARGE	8
8439856_20220809132931130_1_XLARGE	8
8439856_20220809132948819_1_XLARGE	8
8439856_20220809133006977_1_XLARGE	9
8439856_20220809133028018_1_XLARGE	9
8439856_20220809133015407_1_XLARGE	9
8439856_20220809133021750_1_XLARGE	9
8439856_20220809133041381_1_XLARGE	9
8439856_20220809133048669_1_XLARGE	9

8439856_20220809133055536_1_XLARGE	10
8439856_20220809133035115_1_XLARGE	10
8439856_20220809133104866_1_XLARGE	10
8439856_20220809133114129_1_XLARGE	10
8439856_20220809133122152_1_XLARGE	10
8439856_20220809133118056_1_XLARGE	10
8439856_20220809133126404_1_XLARGE	11
8439856_20220809133130139_1_XLARGE	11
8439856_20220809133133992_1_XLARGE	11
8439856_20220809133142705_1_XLARGE	11
8439856_20220809133138435_1_XLARGE	11
8439856_20220809133202516_1_XLARGE	11
8439856_20220809133206398_1_XLARGE	12
8439856_20220809133236765_1_XLARGE	12
8439856_20220809133216359_1_XLARGE	12
8439856_20220809133211438_1_XLARGE	12
8439856_20220809133220546_1_XLARGE	12
8439856_20220809133232645_1_XLARGE	12
8439856_20220809133228173_1_XLARGE	13
8439856_20220809133224563_1_XLARGE	13
8439856_20220809133146399_1_XLARGE	13
8439856_20220809133154167_1_XLARGE	13
8439856_20220809133150052_1_XLARGE	13
8439856_20220809133158158_1_XLARGE	13
8439856_20220809133240744_1_XLARGE	14
8439856_20220809133244921_1_XLARGE	14
8439856_20220809133252588_1_XLARGE	14
8439856_20220809133256708_1_XLARGE	14
8439856_20220809133248606_1_XLARGE	14

---

8439856_20220809133309011_1_XLARGE	14
8439856_20220809133300946_1_XLARGE	15
8439856_20220809133304821_1_XLARGE	15
8439856_20220809133314814_1_XLARGE	15
8439856_20220809133321027_1_XLARGE	15
8439856_20220809133423042_1_XLARGE	15
8439856_20220809133345944_1_XLARGE	15
8439856_20220809133443226_1_XLARGE	16
8439856_20220809133429978_1_XLARGE	16
8439856_20220809133338662_1_XLARGE	16
8439856_20220809133331240_1_XLARGE	16
8439856_20220809133400984_1_XLARGE	16
8439856_20220809133416415_1_XLARGE	16
8439856_20220809133407738_1_XLARGE	17
8439856_20220809133450335_1_XLARGE	17
CONTACTS	18
Contact details	18
Telephones	18
Office hours	18
Address	18

---

---

# SPECIFICATIONS

---

## Overview

---

Enterprise is a one owner, low hour, Cruisers 48 Cantius that has been well cared for including having current Volvo services. Twin D6 IPS 600 pod drive diesels with 400 hrs.

The Innovative "Double Salon" layout stands out in the Industry for forging the way maximum accommodations can be built around the pod drive configuration. The Cantius set the trend in modern boat design. Notable is the height in both Salons and even the engine room. The galley down, second salon, is open to the helm giving a cathedral effect and allowing more light to the interior than you will find on any other Express Cruiser. A 6' sliding glass roof, open windows and triple sliding glass doors have a 360 degree view and continue the emphasis on light and space and bring the outside in.

Offering incredible options for entertaining in and out she also has a Two stateroom layout with 2 heads with the owners cabin taking up the full beam of the boat.

An extended shade, outside grille and hydraulic swim platform for a tender, complete the outside entertainment.

Enterprise is easily handled with her joystick controls and ready to take her new owner anywhere in style.

## Basic Information

---

**Category:** Cruising Yacht

**Sub Category:** Coupe

**Model Year:** 2014

**Year Built:** 2014

**Country:** United States

## Dimensions

---

**LOA:** 48' (14.63mm)

**Beam:** 14.5

**Max Draft:** 3' 6" (1.07mm)

## Speed, Capacities and Weight

---

**Water Capacity:** 80 Gallons

**Holding Tank:** 50 Gal Gallons

**Fuel Capacity:** 350 Gal Gallons

---

## Accommodations

---

**Total Cabins:** 2

---

## Hull and Deck Information

---

**Hull Material:** Fiberglass

---

## Engine Information

---

**Engines:** 2

**Manufacturer:** Volvo

**Engine Type:** Inboard

**Fuel Type:** Diesel

# PHOTOS

8439856\_20220809132806809\_1\_XLARGE 8439856\_20220809132800766\_1\_XLARGE



8439856\_20220809132754840\_1\_XLARGE 8439856\_20220809132814585\_1\_XLARGE



8439856\_20220809132841243\_1\_XLARGE 8439856\_20220809132901225\_1\_XLARGE





8439856\_20220809132850370\_1\_XLARGE 8439856\_20220809132830720\_1\_XLARGE



8439856\_20220809132911238\_1\_XLARGE 8439856\_20220809132920796\_1\_XLARGE



8439856\_20220809132931130\_1\_XLARGE 8439856\_20220809132948819\_1\_XLARGE





8439856\_20220809133006977\_1\_XLARGE 8439856\_20220809133028018\_1\_XLARGE



8439856\_20220809133015407\_1\_XLARGE 8439856\_20220809133021750\_1\_XLARGE



8439856\_20220809133041381\_1\_XLARGE 8439856\_20220809133048669\_1\_XLARGE



8439856\_20220809133055536\_1\_XLARGE 8439856\_20220809133035115\_1\_XLARGE



8439856\_20220809133104866\_1\_XLARGE 8439856\_20220809133114129\_1\_XLARGE



8439856\_20220809133122152\_1\_XLARGE 8439856\_20220809133118056\_1\_XLARGE





8439856\_20220809133126404\_1\_XLARGE 8439856\_20220809133130139\_1\_XLARGE



8439856\_20220809133133992\_1\_XLARGE 8439856\_20220809133142705\_1\_XLARGE



8439856\_20220809133138435\_1\_XLARGE 8439856\_20220809133202516\_1\_XLARGE



8439856\_20220809133206398\_1\_XLARGE



8439856\_20220809133236765\_1\_XLARGE



8439856\_20220809133216359\_1\_XLARGE 8439856\_20220809133211438\_1\_XLARGE



8439856\_20220809133220546\_1\_XLARGE 8439856\_20220809133232645\_1\_XLARGE





8439856\_20220809133228173\_1\_XLARGE

8439856\_20220809133224563\_1\_XLARGE



8439856\_20220809133146399\_1\_XLARGE 8439856\_20220809133154167\_1\_XLARGE



8439856\_20220809133150052\_1\_XLARGE 8439856\_20220809133158158\_1\_XLARGE



8439856\_20220809133240744\_1\_XLARGE 8439856\_20220809133244921\_1\_XLARGE



8439856\_20220809133252588\_1\_XLARGE 8439856\_20220809133256708\_1\_XLARGE



8439856\_20220809133248606\_1\_XLARGE



8439856\_20220809133309011\_1\_XLARGE





8439856\_20220809133300946\_1\_XLARGE 8439856\_20220809133304821\_1\_XLARGE



8439856\_20220809133314814\_1\_XLARGE 8439856\_20220809133321027\_1\_XLARGE



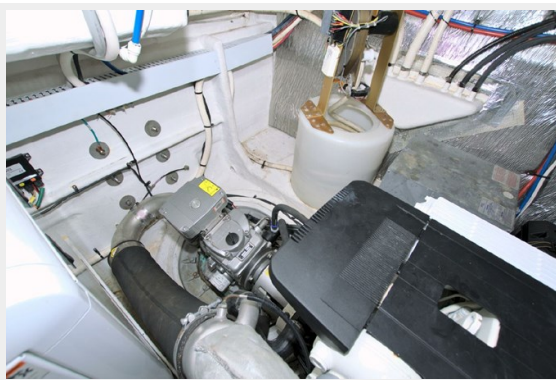
8439856\_20220809133423042\_1\_XLARGE 8439856\_20220809133345944\_1\_XLARGE



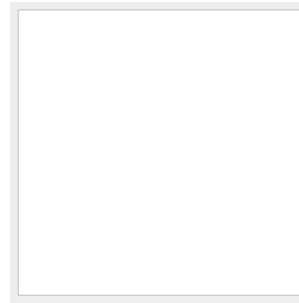
8439856\_20220809133443226\_1\_XLARGE 8439856\_20220809133429978\_1\_XLARGE



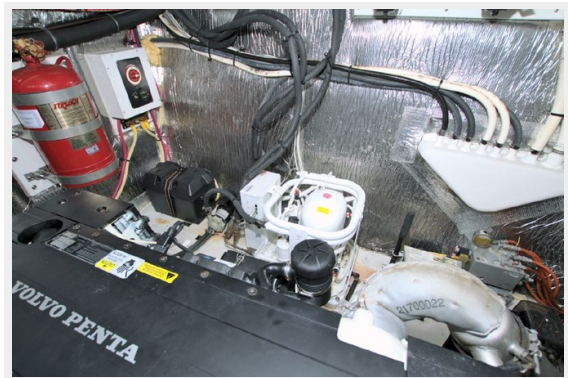
8439856\_20220809133338662\_1\_XLARGE



8439856\_20220809133331240\_1\_XLARGE



8439856\_20220809133400984\_1\_XLARGE 8439856\_20220809133416415\_1\_XLARGE





8439856\_20220809133407738\_1\_XLARGE 8439856\_20220809133450335\_1\_XLARGE



# CONTACTS

---

Andrey Shestakov, leading yacht broker of the sales department of Shestakov Yacht Sales Inc. Shestakov Yacht Sales Inc., the official representative of the Miami/Fort Lauderdale FL headquarters.

## Contact details

---

Email: **andrey@shestakovyachtsales.com**

Web: [shestakovyachtsales.com/en/](http://shestakovyachtsales.com/en/)

## Telephones

---

USA: **+1(954)274-4435**

## Office hours

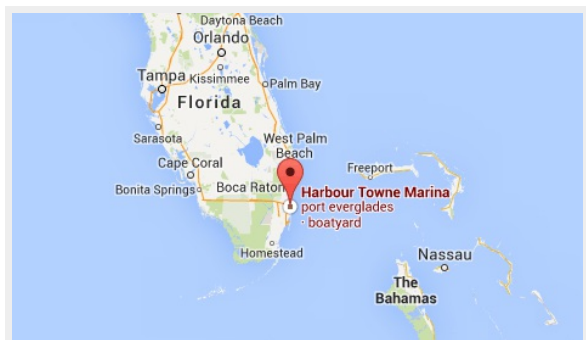
---

Monday – Saturday: **9:00 - 21:00** EDT

Sunday: **closed**

## Address

---



Harbour Towne Marina, 850 NE 3rd St, STE 213, Dania, FL 33004