

BERGER KING — MERIDIAN



Builder: MERIDIAN

Year Built: 2007

Model: Motor Yacht

Price: PRICE ON APPLICATION

Location: United States

LOA: 45' (13.72mm)

Beam: 14.33

Max Draft: 3' 10" (1.17mm)

Our experienced yacht broker, Andrey Shestakov, will help you choose and buy a yacht that best suits your needs **BERGER KING — MERIDIAN** from our catalogue. Presently, at **Shestakov Yacht Sales Inc.**, we have a wide variety of yachts available on our sale's list. We also work in close contact with all the big **yacht manufacturers** from all over the world.

If you would like to buy a yacht **BERGER KING — MERIDIAN** or would like help answering any questions concerning purchasing, selling or chartering a yacht, please call **+1(954)274-4435**

TABLE OF CONTENTS

TABLE OF CONTENTS	2
SPECIFICATIONS	6
Overview	6
Basic Information	6
Dimensions	6
Speed, Capacities and Weight	6
Accommodations	6
Hull and Deck Information	7
Engine Information	7
PHOTOS	8
125682_0_070320091920_4	8
8429191_20220805071313917_1_XLARGE	8
8429191_20220805071329509_1_XLARGE	8
8429191_20220805071358846_1_XLARGE	8
8429191_20220805071337063_1_XLARGE	8
8429191_20220805071343363_1_XLARGE	8
8429191_20220805071420731_1_XLARGE	9
8429191_20220805071426676_1_XLARGE	9
8429191_20220805071407481_1_XLARGE	9
8429191_20220805071414104_1_XLARGE	9
8429191_20220809102151286_1_XLARGE	9
8429191_20220809102155293_1_XLARGE	9
8429191_20220809102159295_1_XLARGE	10
8429191_20220809102211681_1_XLARGE	10
8429191_20220809102219749_1_XLARGE	10
8429191_20220809102224053_1_XLARGE	10
8429191_20220809102229160_1_XLARGE	10
8429191_20220809102234336_1_XLARGE	10

8429191_20220809102239150_1_XLARGE	11
8429191_20220809102243093_1_XLARGE	11
8429191_20220809102247226_1_XLARGE	11
8429191_20220809102252330_1_XLARGE	11
8429191_20220809102301345_1_XLARGE	11
8429191_20220809102305728_1_XLARGE	11
8429191_20220809102310416_1_XLARGE	12
8429191_20220809102318907_1_XLARGE	12
8429191_20220809102328979_1_XLARGE	12
8429191_20220809102333464_1_XLARGE	12
8429191_20220809102207836_1_XLARGE	12
8429191_20220809102203786_1_XLARGE	12
8429191_20220809102215713_1_XLARGE	13
8429191_20220809102422536_1_XLARGE	13
8429191_20220809102349626_1_XLARGE	13
8429191_20220809102417886_1_XLARGE	13
8429191_20220809102338474_1_XLARGE	13
8429191_20220809102343449_1_XLARGE	13
8429191_20220809102359562_1_XLARGE	14
8429191_20220809102443409_1_XLARGE	14
8429191_20220809102427976_1_XLARGE	14
8429191_20220809102434672_1_XLARGE	14
8429191_20220809102439334_1_XLARGE	14
8429191_20220809102456601_1_XLARGE	14
8429191_20220809102452087_1_XLARGE	15
8429191_20220809102448312_1_XLARGE	15
8429191_20220809102500493_1_XLARGE	15
8429191_20220809102521773_1_XLARGE	15
8429191_20220809102517074_1_XLARGE	15

8429191_20220809102505554_1_XLARGE	15
8429191_20220809102512397_1_XLARGE	16
8429191_20220809102404754_1_XLARGE	16
8429191_20220809102526907_1_XLARGE	16
8429191_20220809102536958_1_XLARGE	16
8429191_20220809102531974_1_XLARGE	16
8429191_20220809102541957_1_XLARGE	16
8429191_20220809102601811_1_XLARGE	17
8429191_20220809102546462_1_XLARGE	17
8429191_20220809102606695_1_XLARGE	17
8429191_20220809102556463_1_XLARGE	17
8429191_20220809102412025_1_XLARGE	17
8429191_20220809102622518_1_XLARGE	17
8429191_20220809102612248_1_XLARGE	18
8429191_20220809102617244_1_XLARGE	18
8429191_20220809102627596_1_XLARGE	18
8429191_20220809102632772_1_XLARGE	18
8429191_20220809102638139_1_XLARGE	18
8429191_20220809102714709_1_XLARGE	18
8429191_20220809102654390_1_XLARGE	19
8429191_20220809102720220_1_XLARGE	19
8429191_20220809102643667_1_XLARGE	19
8429191_20220809102649445_1_XLARGE	19
8429191_20220809102710085_1_XLARGE	19
8429191_20220809102147473_1_XLARGE	19
8429191_20220809102725059_1_XLARGE	20
8429191_20220809102730303_1_XLARGE	20
CONTACTS	21
Contact details	21

Telephones	21
Office hours	21
Address	21

SPECIFICATIONS

Overview

A beautiful example of the Quality of Meridian Yachts. Powered By Twin 380hp Cummins QSB5.9 Diesels, she is able to cruise efficiently, then get up and go when the weather turns. Complete Northstar Electronics Package with Networked Features: GPS, Chart, Radar, Auto Pilot, Depth, Fishfinder. Also, equipped with Docking On Command (Bow and Stern Thrusters) to make Docking this vessel a breeze. Spacious interior with 6'7" headroom throughout, Full Galley and Two Staterooms with Ensuite Heads.

You will not find a more user friendly vessel than the 459 Meridian

Basic Information

Category: Motor Yacht

Sub Category: Cockpit

Model Year: 2007

Year Built: 2007

Country: United States

Dimensions

LOA: 45' (13.72mm)

Beam: 14.33

Max Draft: 3' 10" (1.17mm)

Speed, Capacities and Weight

Water Capacity: 90 Gallons

Holding Tank: 55 Gal Gallons

Fuel Capacity: 330 Gal Gallons

Accommodations

Total Cabins: 2

Hull and Deck Information

Hull Material: Fiberglass

Engine Information

Engines: 2

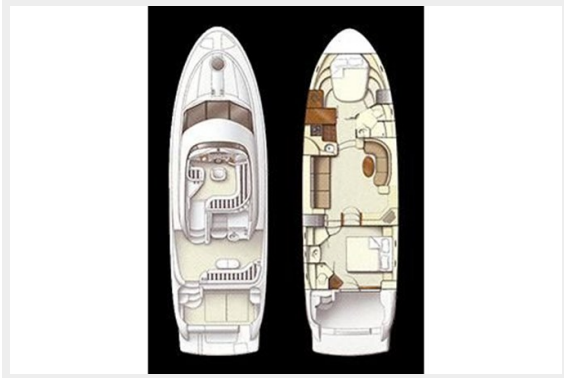
Manufacturer: Cummins

Engine Type: Inboard

Fuel Type: Diesel

PHOTOS

125682_0_070320091920_4



8429191_20220805071313917_1_XLARGE



8429191_20220805071329509_1_XLARGE 8429191_20220805071358846_1_XLARGE



8429191_20220805071337063_1_XLARGE 8429191_20220805071343363_1_XLARGE



8429191_20220805071420731_1_XLARGE 8429191_20220805071426676_1_XLARGE



8429191_20220805071407481_1_XLARGE 8429191_20220805071414104_1_XLARGE



8429191_20220809102151286_1_XLARGE 8429191_20220809102155293_1_XLARGE



8429191_20220809102159295_1_XLARGE 8429191_20220809102211681_1_XLARGE



8429191_20220809102219749_1_XLARGE 8429191_20220809102224053_1_XLARGE



8429191_20220809102229160_1_XLARGE 8429191_20220809102234336_1_XLARGE



8429191_20220809102239150_1_XLARGE 8429191_20220809102243093_1_XLARGE



8429191_20220809102247226_1_XLARGE 8429191_20220809102252330_1_XLARGE



8429191_20220809102301345_1_XLARGE 8429191_20220809102305728_1_XLARGE



8429191_20220809102310416_1_XLARGE 8429191_20220809102318907_1_XLARGE



8429191_20220809102328979_1_XLARGE 8429191_20220809102333464_1_XLARGE



8429191_20220809102207836_1_XLARGE 8429191_20220809102203786_1_XLARGE



8429191_20220809102215713_1_XLARGE



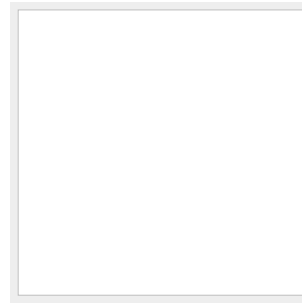
8429191_20220809102422536_1_XLARGE



8429191_20220809102349626_1_XLARGE



8429191_20220809102417886_1_XLARGE



8429191_20220809102338474_1_XLARGE 8429191_20220809102343449_1_XLARGE



8429191_20220809102359562_1_XLARGE 8429191_20220809102443409_1_XLARGE



8429191_20220809102427976_1_XLARGE 8429191_20220809102434672_1_XLARGE



8429191_20220809102439334_1_XLARGE 8429191_20220809102456601_1_XLARGE



8429191_20220809102452087_1_XLARGE 8429191_20220809102448312_1_XLARGE



8429191_20220809102500493_1_XLARGE



8429191_20220809102521773_1_XLARGE



8429191_20220809102517074_1_XLARGE 8429191_20220809102505554_1_XLARGE



8429191_20220809102512397_1_XLARGE 8429191_20220809102404754_1_XLARGE



8429191_20220809102526907_1_XLARGE 8429191_20220809102536958_1_XLARGE



8429191_20220809102531974_1_XLARGE 8429191_20220809102541957_1_XLARGE



8429191_20220809102601811_1_XLARGE

8429191_20220809102546462_1_XLARGE



8429191_20220809102606695_1_XLARGE

8429191_20220809102556463_1_XLARGE



8429191_20220809102412025_1_XLARGE 8429191_20220809102622518_1_XLARGE



8429191_20220809102612248_1_XLARGE 8429191_20220809102617244_1_XLARGE



8429191_20220809102627596_1_XLARGE 8429191_20220809102632772_1_XLARGE

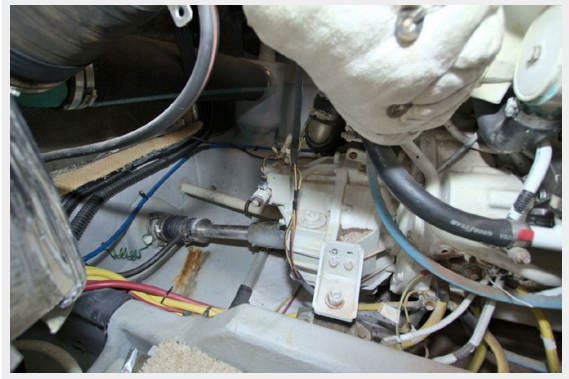
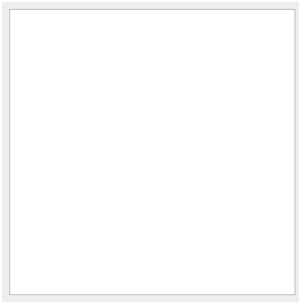


8429191_20220809102638139_1_XLARGE 8429191_20220809102714709_1_XLARGE



8429191_20220809102654390_1_XLARGE

8429191_20220809102720220_1_XLARGE



8429191_20220809102643667_1_XLARGE 8429191_20220809102649445_1_XLARGE



8429191_20220809102710085_1_XLARGE 8429191_20220809102147473_1_XLARGE



8429191_20220809102725059_1_XLARGE 8429191_20220809102730303_1_XLARGE



CONTACTS

Andrey Shestakov, leading yacht broker of the sales department of Shestakov Yacht Sales Inc. Shestakov Yacht Sales Inc., the official representative of the Miami/Fort Lauderdale FL headquarters.

Contact details

Email: **andrey@shestakovyachtsales.com**

Web: shestakovyachtsales.com/en/

Telephones

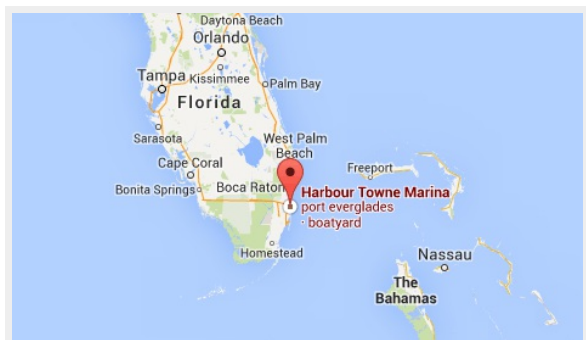
USA: **+1(954)274-4435**

Office hours

Monday – Saturday: **9:00 - 21:00** EDT

Sunday: **closed**

Address



Harbour Towne Marina, 850 NE 3rd St, STE 213, Dania, FL 33004