

GOLDEN GIRL — EGG HARBOR



Builder: EGG HARBOR

Year Built: 1984

Model: Convertible

Price: PRICE ON APPLICATION

Location: United States

LOA: 38' (11.58mm)

Beam: 13.25

Max Draft: 2' 9" (0.84mm)

Cruise Speed: 21 Knots Kts. (24 MPH)

Max Speed: 28 Knots Kts. (32 MPH)

Our experienced yacht broker, Andrey Shestakov, will help you choose and buy a yacht that best suits your needs **Golden Girl — EGG HARBOR** from our catalogue. Presently, at Shestakov Yacht Sales Inc., we have a wide variety of yachts available on our sale's list. We also work in close contact with all the big yacht manufacturers from all over the world.

If you would like to buy a yacht **Golden Girl — EGG HARBOR** or would like help answering any questions concerning purchasing, selling or chartering a yacht, please call **+1(954)274-4435**

TABLE OF CONTENTS

TABLE OF CONTENTS	2
SPECIFICATIONS	4
Overview	4
Basic Information	4
Dimensions	4
Speed, Capacities and Weight	4
Accommodations	5
Hull and Deck Information	5
Engine Information	5
PHOTOS	6
DSC04087	6
DSC04088	6
DSC04089	6
DSC04090	6
DSC04091	6
DSC04092	6
DSC04093	7
DSC04094	7
DSC04095	7
DSC04096	7
DSC04097	7
DSC04098	7
DSC04099	8
DSC04100	8
DSC04101	8
DSC04102	8
DSC04103	8
DSC04104	8

DSC04105	9
DSC04106	9
DSC04107	9
DSC04108	9
DSC04109	9
DSC04110	9
DSC04111	10
DSC04112	10
DSC04113	10
DSC04114	10
DSC04115	10
DSC04116	10
DSC04117	11
DSC04118	11
DSC04119	11
DSC04120	11
DSC04121	11
DSC04122	11
DSC04123	12
CONTACTS	13
Contact details	13
Telephones	13
Office hours	13
Address	13

SPECIFICATIONS

Overview

A very popular model for Egg Harbor this boat has some very nice upgrades such as fresh canvas to cover the beautifully finished Teak that accents this classic cruiser. Both engines have been rebuilt with the Port having only 145 hrs SMOH and the Starboard having 376 hrs there's plenty of maintenance free hours left to enjoy. The Starboard transmission has also been replaced along with a new electric Windless, onboard Battery Charger, a Spare set of Props and a fresh bottom job makes this a standout classic that has been restored to almost Bristol condition.

Basic Information

Category: Convertible

Sub Category: Convertible

Model Year: 1984

Year Built: 1984

Country: United States

Dimensions

LOA: 38' (11.58mm)

LWL: 34' (10.36mm)

LOD: 36' (10.97mm)

Beam: 13.25

Max Draft: 2' 9" (0.84mm)

Speed, Capacities and Weight

Cruise Speed: 21 Knots Kts. (24 MPH)

Max Speed: 28 Knots Kts. (32 MPH)

Water Capacity: 73 Gallons

Holding Tank: 35 Gal Gallons

Fuel Capacity: 320 Gal Gallons

Accommodations

Total Cabins: 2

Total Heads: 1

Hull and Deck Information

Hull Material: Fiberglass

Engine Information

Engines: 2

Manufacturer: Crusader

Engine Type: Inboard

Fuel Type: Gas/Petrol

PHOTOS

DSC04087



DSC04088



DSC04089



DSC04090



DSC04091



DSC04092



DSC04093



DSC04094



DSC04095



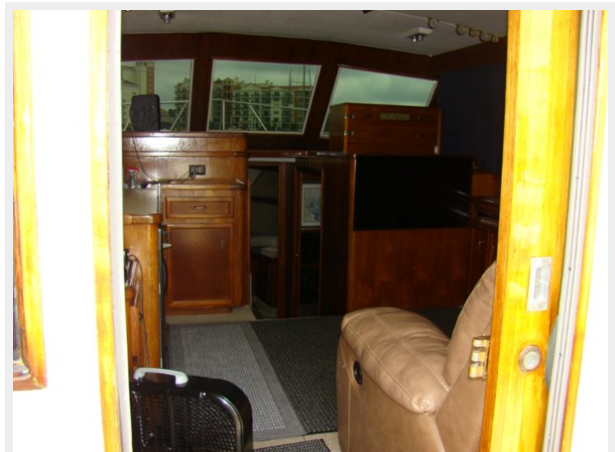
DSC04096



DSC04097



DSC04098



DSC04099



DSC04100



DSC04101



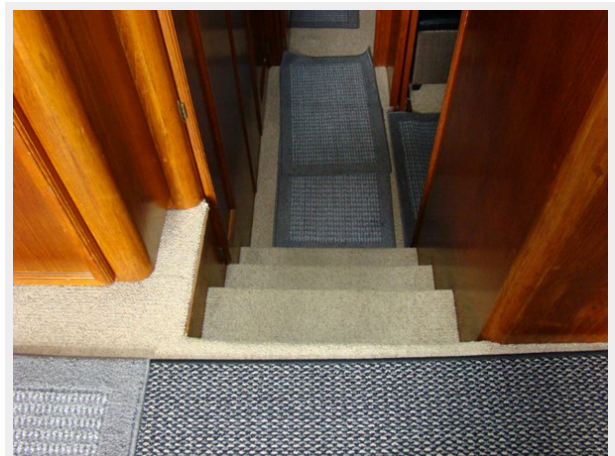
DSC04102



DSC04103



DSC04104



DSC04105



DSC04106



DSC04107



DSC04108



DSC04109



DSC04110



DSC04111



DSC04112



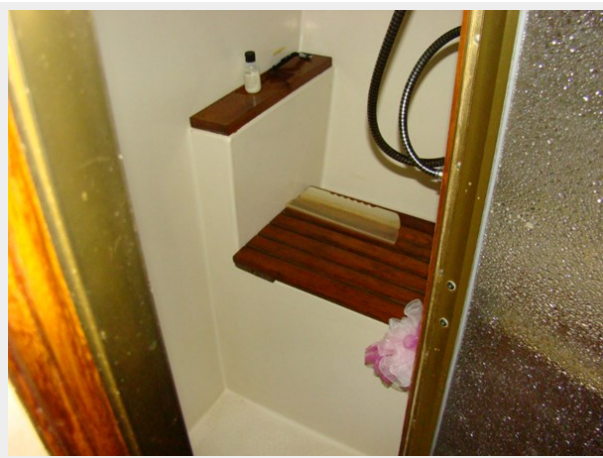
DSC04113



DSC04114



DSC04115



DSC04116



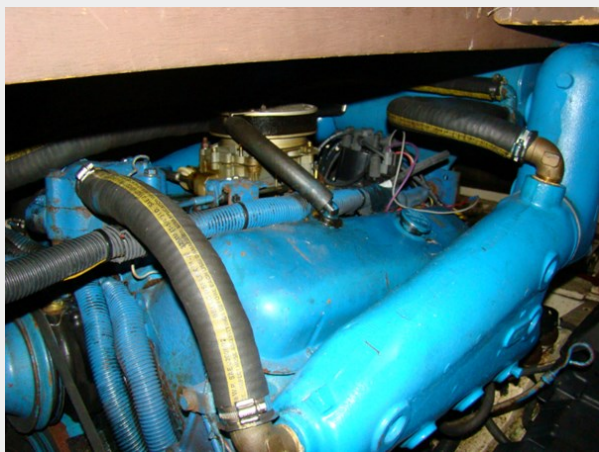
DSC04117



DSC04118



DSC04119



DSC04120



DSC04121



DSC04122



DSC04123



CONTACTS

Andrey Shestakov, leading yacht broker of the sales department of Shestakov Yacht Sales Inc. Shestakov Yacht Sales Inc., the official representative of the Miami/Fort Lauderdale FL headquarters.

Contact details

Email: andrey@shestakovyachtsales.com

Web: shestakovyachtsales.com/en/

Telephones

USA: +1(954)274-4435

Office hours

Monday – Saturday: **9:00 - 21:00** EDT

Sunday: **closed**

Address



Harbour Towne Marina, 850 NE 3rd St,
STE 213, Dania, FL 33004