

## 28' REGAL 1994 — REGAL



**Builder:** REGAL

**Year Built:** 1994

**Model:** Boats

**Price:** PRICE ON APPLICATION

**Location:** United States

**LOA:** 28' (8.53mm)

**Beam:** 9.16

**Max Draft:** 3' 6" (1.07mm)

Our experienced yacht broker, Andrey Shestakov, will help you choose and buy a yacht that best suits your needs **28' Regal 1994 — REGAL** from our catalogue. Presently, at Shestakov Yacht Sales Inc., we have a wide variety of yachts available on our sale's list. We also work in close contact with all the big yacht manufacturers from all over the world.

If you would like to buy a yacht **28' Regal 1994 — REGAL** or would like help answering any questions concerning purchasing, selling or chartering a yacht, please call **+1(954)274-4435**

# TABLE OF CONTENTS

TABLE OF CONTENTS	2
SPECIFICATIONS	4
Overview	4
Basic Information	4
Dimensions	4
Accommodations	4
Hull and Deck Information	4
Engine Information	5
PHOTOS	6
8031218_20210913143048459_1_XLARGE	6
8031218_20210913143052786_1_XLARGE	6
8031218_20210913143057202_1_XLARGE	6
8031218_20210913143059358_1_XLARGE	6
8031218_20210913143108201_1_XLARGE	7
8031218_20210913143105172_1_XLARGE	7
8031218_20210913143110143_1_XLARGE	7
8031218_20210913143112302_1_XLARGE	7
8031218_20210913143115111_1_XLARGE	8
8031218_20210913143116123_1_XLARGE	8
8031218_20210913143123579_1_XLARGE	8
8031218_20210913143121282_1_XLARGE	8
8031218_20210913143125383_1_XLARGE	8
8031218_20210913143128078_1_XLARGE	8
CONTACTS	9
Contact details	9
Telephones	9
Office hours	9
Address	9



---

# SPECIFICATIONS

---

## Overview

---

This REGAL is a popular family cruiser with a surprisingly spacious interior. She has a large integrated swim platform and a wide 9 foot beam. The mid cabin is arranged with a semicircular dinette, a stand up head with vanity, and a queen size aft berth.

This spacious express cruiser is powered with a 330 HP Volvo Penta

**Trailer Included!**

## Basic Information

---

**Category:** Boats

**Model Year:** 1994

**Year Built:** 1994

**Country:** United States

## Dimensions

---

**LOA:** 28' (8.53mm)

**Beam:** 9.16

**Max Draft:** 3' 6" (1.07mm)

## Accommodations

---

**Total Cabins:** 1

**Total Heads:** 1

## Hull and Deck Information

---

**Hull Material:** Fiberglass

---

## Engine Information

---

**Engines:** 1

**Manufacturer:** Mercruiser

**Engine Type:** Inboard

**Fuel Type:** Gas

# PHOTOS

8031218\_20210913143048459\_1\_XLARGE



8031218\_20210913143052786\_1\_XLARGE



8031218\_20210913143057202\_1\_XLARGE



8031218\_20210913143059358\_1\_XLARGE



8031218\_20210913143108201\_1\_XLARGE

8031218\_20210913143105172\_1\_XLARGE



8031218\_20210913143110143\_1\_XLARGE



8031218\_20210913143112302\_1\_XLARGE



8031218\_20210913143115111\_1\_XLARGE

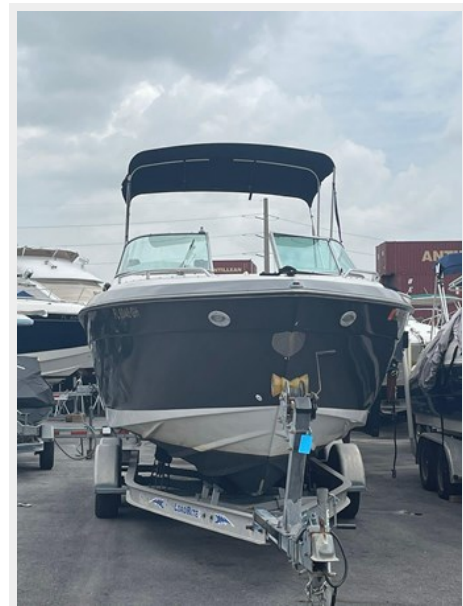


8031218\_20210913143116123\_1\_XLARGE

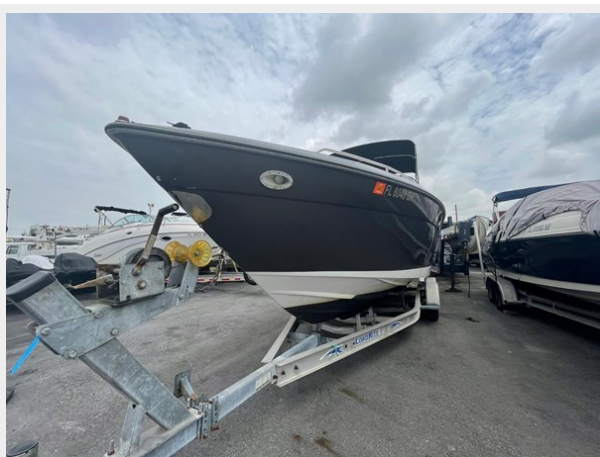


8031218\_20210913143123579\_1\_XLARGE

8031218\_20210913143121282\_1\_XLARGE



8031218\_20210913143125383\_1\_XLARGE



8031218\_20210913143128078\_1\_XLARGE





# CONTACTS

---

Andrey Shestakov, leading yacht broker of the sales department of Shestakov Yacht Sales Inc. Shestakov Yacht Sales Inc., the official representative of the Miami/Fort Lauderdale FL headquarters.

## Contact details

---

Email: [andrey@shestakovyachtsales.com](mailto:andrey@shestakovyachtsales.com)

Web: [shestakovyachtsales.com/en/](http://shestakovyachtsales.com/en/)

## Telephones

---

USA: +1(954)274-4435

## Office hours

---

Monday – Saturday: **9:00 - 21:00** EDT

Sunday: **closed**

## Address

---



Harbour Towne Marina, 850 NE 3rd St,  
STE 213, Dania, FL 33004