

## JOHN W. — CUSTOM



**Судостроитель:** CUSTOM

**Год постройки:** 2000

**Модель:** Траулер

**Цена:** ЦЕНА ЯХТЫ ПО ЗАПРОСУ

**Местонахождение:** United States

**Длина общая:** 47' (14.33mm)

**Ширина:** 16

**Мин. осадка:** 4' 6" (1.37mm)

Купить John W. — CUSTOM а также выбрать подходящую вам яхту из нашего каталога яхт вам поможет опытный яхтенный брокер Андрей Шестаков. На сегодняшний день компания Shestakov Yacht Sales Inc. имеет большое количество яхт в собственном списке продаж, а также тесно сотрудничает со всеми крупными яхтенными производителями по всему миру.

Для того чтобы купить яхту John W. — CUSTOM а также проконсультироваться по любому вопросу связанному с покупкой, продажей, чартером яхт позвоните по телефону **+7(918)465-66-44**.

# ОГЛАВЛЕНИЕ

---

ОГЛАВЛЕНИЕ	2
ХАРАКТЕРИСТИКИ	5
Обзор	5
Основная информация	5
Размеры	5
Скорость, вместимость и масса	5
Размещение	5
Корпус и палуба	5
Информация о двигателе	5
ФОТОГРАФИИ	6
2_2789309_bray_passagemaker_bow	6
1_2789309_bray_passagemaker_starboard_bow	6
4_2789309_bray_passagemaker_bulbous_bow_and_stabilizing_keel	6
3_2789309_bray_passagemaker_port	6
6_2789309_bray_passagemaker_port_bow	6
5_2789309_bray_passagemaker_depiction_of_propeller_with_tunnel_enclosure_as_well_as_bulbous_bow	6
8_2789309_bray_passagemaker_starboard	6
7_2789309_bray_passagemaker_starboard	6
10_2789309_bray_passagemaker_port_looking_aft	7
9_2789309_bray_passagemaker_bow	7
11_2789309_bray_passagemaker_starboard_stern_quarter	7
12_2789309_bray_passagemaker_stern	7
13_2789309_bray_passagemaker_stern	7
14_2789309_bray_passagemaker_upper_helm	7
15_2789309_bray_passagemaker_tender_cradle	7
16_2789309_bray_passagemaker_davit	7
17_2789309_bray_passagemaker_cockpit	8
18_2789309_bray_passagemaker_cockpit_looking_starboard	8
19_2789309_bray_passagemaker_cockpit_sink	8
20_2789309_bray_passagemaker_access_to_upper_bridge	8
21_2789309_bray_passagemaker_facing_pilothouse	8

22_2789309_bray_passagemaker_looking_starboard_aft	8
23_2789309_bray_passagemaker_looking_port_aft	8
24_2789309_bray_passagemaker_portuguese_bridge	8
25_2789309_bray_passagemaker_hydraulic_windlass	8
26_2789309_bray_passagemaker_dry_exhaust_stack_and_radar	8
27_2789309_bray_passagemaker_salon_seating_area	9
28_2789309_bray_passagemaker_folding_coffee_table_retracted	9
30_2789309_bray_passagemaker_entertainment_cabinet	9
29_2789309_bray_passagemaker_folding_coffee_table_extended	9
32_2789309_bray_passagemaker_shelving_unit	9
31_2789309_bray_passagemaker_looking_forward	9
33_2789309_bray_passagemaker_clock_and_barometer	9
34_2789309_bray_passagemaker_dining_area	9
35_2789309_bray_passagemaker_galley	10
36_2789309_bray_passagemaker_stovetop	10
37_2789309_bray_passagemaker_double_stainless_steel_sink	10
38_2789309_bray_passagemaker_microwave_and_convection_oven	10
39_2789309_bray_passagemaker_refrigerator	10
40_2789309_bray_passagemaker_galley_storage	10
41_2789309_bray_passagemaker_master_stateroom	10
42_2789309_bray_passagemaker_master_stateroom_with_storage	10
44_2789309_bray_passagemaker_guest_stateroom	11
43_2789309_bray_passagemaker_queen_centerline_berth	11
46_2789309_bray_passagemaker_guest_stateroom_closet_shelving_unit_and_desk	11
45_2789309_bray_passagemaker_guest_stateroom_storage	11
47_2789309_bray_passagemaker_cedar_lined_hanging_closet	11
48_2789309_bray_passagemaker_third_stateroom	11
50_2789309_bray_passagemaker_guest_head	11
49_2789309_bray_passagemaker_washerdryer	11
52_2789309_bray_passagemaker_guest_head_walk_in_shower	12
51_2789309_bray_passagemaker_guest_head_wash_basin	12
53_2789309_bray_passagemaker_pilothouse_captains_chair	12
54_2789309_bray_passagemaker_pilothouse_starboard_view	12

56_2789309_bray_passagemaker_depth_sounder	12
55_2789309_bray_passagemaker_pilothouse_helm	12
58_2789309_bray_passagemaker_electrical_panel	12
57_2789309_bray_passagemaker_web_based_camera_system	12
60_2789309_bray_passagemaker_autopilot_and_gps	13
59_2789309_bray_passagemaker_instrument_cluster	13
61_2789309_bray_passagemaker_compass_and_rudder_angle_indicator	13
62_2789309_bray_passagemaker_computer	13
63_2789309_bray_passagemaker_pilothouse_drawers_and_storage	13
64_2789309_bray_pilothouse_convertible_berth	13
65_2789309_bray_pilothouse_computer_monitors	13
66_2789309_bray_passagemaker_main_engine_side_view	13
67_2789309_bray_passagemaker_main_engine_top_view	14
68_2789309_bray_passagemaker_hydraulic_auxiliary_power	14
70_2789309_bray_passagemaker_ac_electrical_panel	14
69_2789309_bray_passagemaker_bilge_pump_system	14
71_2789309_bray_passagemaker_dc_electrical_panel	14
73_2789309_bray_passagemaker_generator	14
74_2789309_bray_passagemaker_engine_room_work_area	14
75_2789309_bray_passagemaker_lithionics_house_battery	14
76_2789309_bray_passagemaker_starting_batteries	15
77_2789309_bray_passagemaker_battery_charger	15
78_2789309_bray_passagemaker_port_day_tank	15
79_2789309_bray_passagemaker_starboard_day_tank	15
81_2789309_bray_passagemaker_tender_and_trailer_bow_view	15
80_2789309_bray_passagemaker_tender_and_trailer_stern_view	15
<b>КОНТАКТЫ</b>	<b>16</b>
Контактная информация	16
Телефоны	16
Время работы	16
Адрес	16

## ХАРАКТЕРИСТИКИ

### Обзор

Few vessels now available for sale can compare with the Bray Yacht Design Passagemaker Karvi 47. when it comes to design features, leading edge technology and the quality and integrity of construction. Designed by award-winning naval architect Patrick Bray, the John W. features a full displacement hull, with widely flared bow sections, a spray knocker to reduce spray on deck, as well as an ellipsoid bulbous bow to reduce drag and enhance the seakeeping qualities of the vessel.. The hull features pitch and roll-dampening fixed twin keels . Tunnel enclosures around a large diameter highly skewed propeller allow for the use of a very slow rpm for increased propeller efficiency and reduced noise. This also enables the vessel to drive into head winds and big seas without a change of speed. Together these features greatly increase cruising speed without increasing fuel consumption. The John W. can maintain a speed of 8 knots with a 3500 mile range.

Hull and deck are designed and built to American Bureau of Shipping Rules for Unrestricted Offshore Motoryachts as per the recommendations of the American Boat and Yachting Council. The cored fiberglass hull is standard, designed to spread shock loads. Solid layups are specified where required. Watertight bulkheads are designed and engineered to maximize safety.

The engine room has full standing headroom and easy access without compromising accommodations. It is "clean" from a complexity of valves, wiring, and switches, utilizing carefully planned panels as well as automatic and manual fire fighting systems. The dry-stack exhaust reduces back pressure and noise, increasing engine efficiency, while removing exhaust emissions from the cockpit and boat deck. Engine cooling is simplified using keel coolers, which extend engine life by eliminating salt water. The ship uses a sea-chest with all salt water entering into an accessible column, eliminating multiple hull openings. Heavy plexiglass is mounted on the top for viewing into the chest and can be removed while the vessel is afloat.

### Основная информация

Тип судна: Траулер

Модельный год: 2000

Год постройки: 2000

Страна: United States

### Размеры

Длина общая: 47' (14.33mm)

Длина по ватерлинии: 40' 10" (12.45mm) Ширина: 16

Мин. осадка: 4' 6" (1.37mm)

### Скорость, вместимость и масса

Вместимость воды: 300 Gallons

Вместимость сточного бака: 150 Gal  
Gallons

Объем топливного бака: 1500 Gal  
Gallons

### Размещение

Всего кают: 3

Всего ком. состава: 2

### Корпус и палуба

Материал корпуса: Fiberglass

### Информация о двигателе

Двигатели: 2

Производитель: Caterpillar

Тип двигателя: Inboard

Тип топлива: Diesel

## ФОТОГРАФИИ

1\_2789309\_bray\_passagemaker\_starboard\_bow



2\_2789309\_bray\_passagemaker\_bow



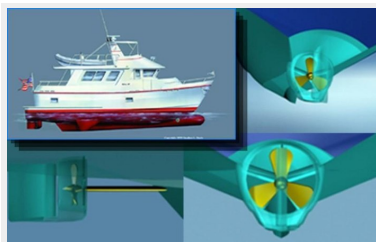
3\_2789309\_bray\_passagemaker\_port



4\_2789309\_bray\_passagemaker\_bulbous\_bow\_and\_stabilizing\_keel



5\_2789309\_bray\_passagemaker\_depiction\_of\_propeller\_with\_tunnel\_enclosure\_as\_well\_as\_bulbous\_bow 6\_2789309\_bray\_passagemaker\_port



7\_2789309\_bray\_passagemaker\_starboard



8\_2789309\_bray\_passagemaker\_starboard



9\_2789309\_bray\_passagemaker\_bow



10\_2789309\_bray\_passagemaker\_port\_looking\_aft



11\_2789309\_bray\_passagemaker\_starboard\_stern\_quarter



12\_2789309\_bray\_passagemaker\_stern



13\_2789309\_bray\_passagemaker\_stern



14\_2789309\_bray\_passagemaker\_upper\_helm



15\_2789309\_bray\_passagemaker\_tender\_cradle



16\_2789309\_bray\_passagemaker\_davit



17\_2789309\_bray\_passagemaker\_cockpit



18\_2789309\_bray\_passagemaker\_cockpit\_looking\_starboard



19\_2789309\_bray\_passagemaker\_cockpit\_sink



20\_2789309\_bray\_passagemaker\_access\_to\_upper\_bridge



21\_2789309\_bray\_passagemaker\_facing\_pilothouse



22\_2789309\_bray\_passagemaker\_looking\_starboard\_aft



23\_2789309\_bray\_passagemaker\_looking\_port\_aft



24\_2789309\_bray\_passagemaker\_portuguese\_bridge



25\_2789309\_bray\_passagemker\_hydraulic\_windlass



26\_2789309\_bray\_passagemaker\_dry\_exhaust\_stack\_and\_radar

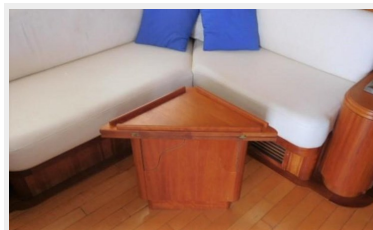




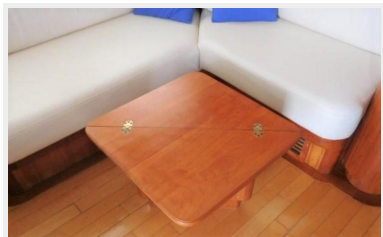
27\_2789309\_bray\_passagemaker\_salon\_seating\_area



28\_2789309\_bray\_passagemaker\_folding\_coffee\_table\_retracted



29\_2789309\_bray\_passagemaker\_folding\_coffee\_table\_extended



30\_2789309\_bray\_passagemaker\_entertainment\_cabinet



31\_2789309\_bray\_passagemaker\_looking\_forward



32\_2789309\_bray\_passagemaker\_shelving\_unit



33\_2789309\_bray\_passagemaker\_clock\_and\_barometer



34\_2789309\_bray\_passagemaker\_dining\_area



35\_2789309\_bray\_passagemaker\_galley



36\_2789309\_bray\_passagemaker\_stovetop



37\_2789309\_bray\_passagemaker\_double\_stainless\_steel\_sink



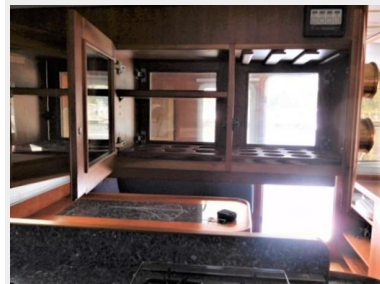
38\_2789309\_bray\_passagemaker\_microwave\_and\_convection\_oven



39\_2789309\_bray\_passagemaker\_refrigerator



40\_2789309\_bray\_passagemaker\_galley\_storage



41\_2789309\_bray\_passagemaker\_master\_stateroom



42\_2789309\_bray\_passagemaker\_master\_stateroom\_with\_storage



43\_2789309\_bray\_passagemaker\_queen\_centerline\_berth



44\_2789309\_bray\_passagemaker\_guest\_stateroom



45\_2789309\_bray\_passagemaker\_guest\_stateroom\_storage



46\_2789309\_bray\_passagemaker\_guest\_stateroom\_closet\_shelving\_unit\_and\_desk



47\_2789309\_bray\_passagemaker\_cedar\_lined\_hanging\_closet



48\_2789309\_bray\_passagemaker\_third\_stateroom



49\_2789309\_bray\_passagemaker\_washerdryer



50\_2789309\_bray\_passagemaker\_guest\_head



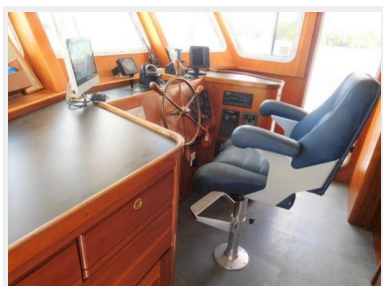
51\_2789309\_bray\_passagemaker\_guest\_head\_wash\_basin



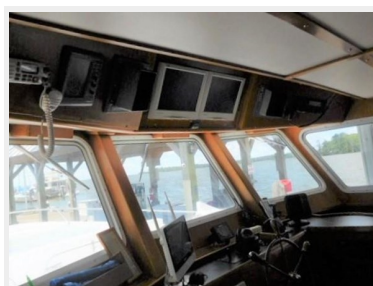
52\_2789309\_bray\_passagemaker\_guest\_head\_walk\_in\_shower



53\_2789309\_bray\_passagemaker\_pilothouse\_captains\_chair



54\_2789309\_bray\_passagemaker\_pilothouse\_starboard\_view



55\_2789309\_bray\_passagemaker\_pilothouse\_helm



56\_2789309\_bray\_passagemaker\_depth\_sounder



57\_2789309\_bray\_passagemaker\_web\_based\_camera\_system



58\_2789309\_bray\_passagemaker\_electrical\_panel



59\_2789309\_bray\_passagemaker\_instrument\_cluster



60\_2789309\_bray\_passagemaker\_autopilot\_and\_gps



61\_2789309\_bray\_passagemaker\_compass\_and\_rudder\_angle\_indicator



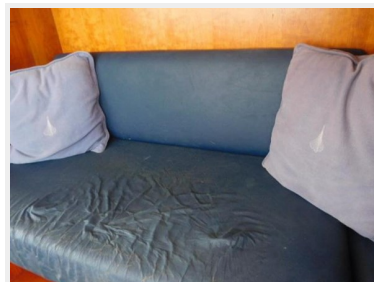
62\_2789309\_bray\_passagemaker\_computer



63\_2789309\_bray\_passagemaker\_pilothouse\_drawers\_and\_storage



64\_2789309\_bray\_pilothouse\_convertible\_berth



65\_2789309\_bray\_pilothouse\_computer\_monitors



66\_2789309\_bray\_passagemaker\_main\_engine\_side\_view



67\_2789309\_bray\_passagemaker\_main\_engine\_top\_view



68\_2789309\_bray\_passagemaker\_hydraulic\_auxiliary\_power



69\_2789309\_bray\_passagemaker\_bilge\_pump\_system



70\_2789309\_bray\_passagemaker\_ac\_electrical\_panel



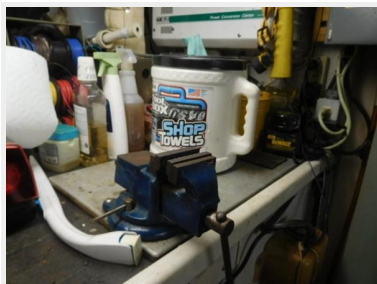
71\_2789309\_bray\_passagemaker\_dc\_electrical\_panel



73\_2789309\_bray\_passagemaker\_generator



74\_2789309\_bray\_passagemaker\_engine\_room\_work\_area



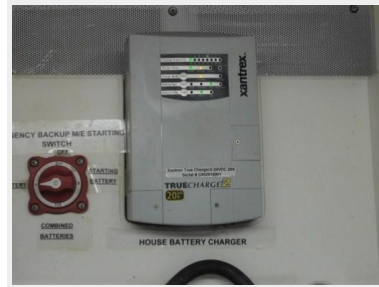
75\_2789309\_bray\_passagemaker\_lithionics\_house\_battery



76\_2789309\_bray\_passagemaker\_starting\_batteries



77\_2789309\_bray\_passagemaker\_battery\_charger



78\_2789309\_bray\_passagemaker\_port\_day\_tank



79\_2789309\_bray\_passagemaker\_starboard\_day\_tank



80\_2789309\_bray\_passagemaker\_tender\_and\_trailer\_stern\_view



81\_2789309\_bray\_passagemaker\_tender\_and\_trailer\_bow\_view



## КОНТАКТЫ

---

Андрей Шестаков (Andrey Shestakov) – ведущий яхтенный брокер отдела продаж яхт и судов компании Shestakov Yacht Sales Inc. Официальный представитель Shestakov Yacht Sales Inc. для русскоговорящих клиентов в центральном офисе компании в Майами/Форт Лодердейл/Флорида/США.

### Контактная информация

---

Email:  
[andrey@shestakovyachtsales.com](mailto:andrey@shestakovyachtsales.com)

Web: [shestakovyachtsales.com](http://shestakovyachtsales.com)

### Телефоны

---

Краснодарский край: **+7(918)465-66-44**

США, Майами, Флорида: **+1(954)274-4435**

### Время работы

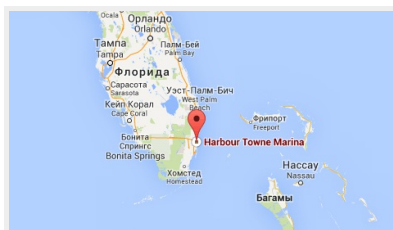
---

Понедельник – Суббота: **9:00 - 21:00**  
EDT

Воскресенье: **Закрито**

### Адрес

---



Harbour Towne Marina, 850 NE 3rd St,  
STE 213, Dania, FL 33004