

2009 YAMAHA WAVERUNNER FZR — YAMAHA



Builder: YAMAHA

Year Built: 2008

Model: Personal Watercraft

Price: PRICE ON APPLICATION

Location: United States

LOA: 11' 1" (3.38mm)

Beam: 4

Max Speed: 58.22 Knots Kts. (67 MPH)

Our experienced yacht broker, Andrey Shestakov, will help you choose and buy a yacht that best suits your needs 2009 Yamaha Waverunner FZR — YAMAHA from our catalogue. Presently, at Shestakov Yacht Sales Inc., we have a wide variety of yachts available on our sale's list. We also work in close contact with all the big yacht manufacturers from all over the world.

If you would like to buy a yacht 2009 Yamaha Waverunner FZR — YAMAHA or would like help answering any questions concerning purchasing, selling or chartering a yacht, please call +1(954)274-4435

TABLE OF CONTENTS

TABLE OF CONTENTS	2
SPECIFICATIONS	4
Overview	4
Basic Information	4
Dimensions	4
Speed, Capacities and Weight	4
Hull and Deck Information	4
Engine Information	4
PHOTOS	5
IMG_6466	5
IMG_6467	5
IMG_6468	5
IMG_6469	5
IMG_6473	5
IMG_6474	5
IMG_6475	6
IMG_6476	6
IMG_6477	6
IMG_6478	6
IMG_6487	6
IMG_6489	6
IMG_6500	7
IMG_6501	7
IMG_6502	7
IMG_6503	7
IMG_6505	7
IMG_6507	7
IMG_6508	8

IMG_6509	8
IMG_6510	8
IMG_6511	8
IMG_6512	8
IMG_6514	8
IMG_6515	9
IMG_6516	9
IMG_6524	9
IMG_6521	9
IMG_6527	9
IMG_6528	9
IMG_6529	10
IMG_6550	10
IMG_6552	10
CONTACTS	11
Contact details	11
Telephones	11
Office hours	11
Address	11

SPECIFICATIONS

Overview

This 2009 Yamaha Waverunner FZR Personal Water Craft For Sale on Norris Lake Tennessee is equipped with a Yamaha Supercharged 1812CC In-Line 4-Cylinder 4-Stroke Fuel Injected High Output 210HP Jet Drive Engine and features Yamaha's NanoXcel Hull, Steering Assist System with a 3-Position Telescoping Handle Bar, Quick Shift Trim System (QSTS), Reverse, Rear View Mirrors, Security Key w/arming Mode, a Mooring Cover, plus a Hydro-Port 2 PWC Port on Norris Lake is available as an additional purchase

Basic Information

Category: Personal Watercraft

Sub Category: Personal Watercraft

Model Year: 2009

Year Built: 2008

Country: United States

Dimensions

LOA: 11' 1" (3.38mm)

Beam: 4

Speed, Capacities and Weight

Max Speed: 58.22 Knots Kts. (67 MPH)

Fuel Capacity: 18.5 Gal Gallons

Hull and Deck Information

Hull Material: Fiberglass

Hull Configuration: Modified V-Hull

Engine Information

Engines: 1

Manufacturer: Yamaha

Engine Type: Inboard

Fuel Type: Gas/Petrol

PHOTOS

IMG_6466



IMG_6467



IMG_6468



IMG_6469



IMG_6473



IMG_6474



IMG_6475



IMG_6476



IMG_6477



IMG_6478



IMG_6487



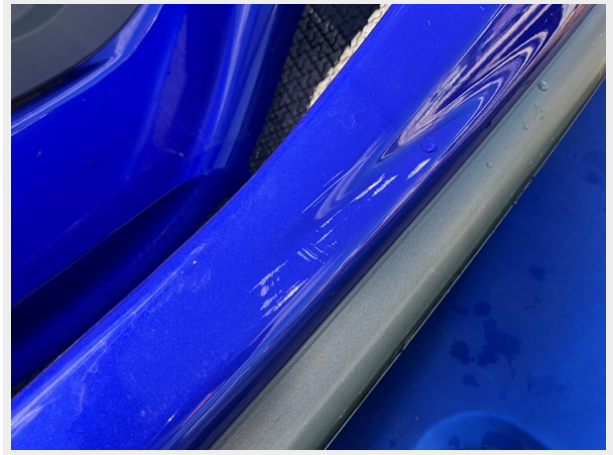
IMG_6489



IMG_6500



IMG_6501



IMG_6502



IMG_6503



IMG_6505



IMG_6507



IMG_6508



IMG_6509



IMG_6510



IMG_6511



IMG_6512



IMG_6514



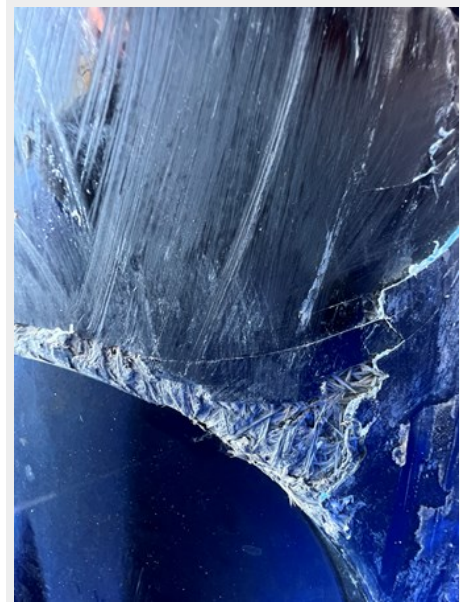
IMG_6515



IMG_6516



IMG_6524



IMG_6521



IMG_6527



IMG_6528



IMG_6529



IMG_6550



IMG_6552



CONTACTS

Andrey Shestakov, leading yacht broker of the sales department of Shestakov Yacht Sales Inc. Shestakov Yacht Sales Inc., the official representative of the Miami/Fort Lauderdale FL headquarters.

Contact details

Email: andrey@shestakovyachtsales.com

Web: shestakovyachtsales.com/en/

Telephones

USA: +1(954)274-4435

Office hours

Monday – Saturday: **9:00 - 21:00** EDT

Sunday: **closed**

Address



Harbour Towne Marina, 850 NE 3rd St,
STE 213, Dania, FL 33004