

JUST BEARLY III — TOLLYCRAFT



Builder: TOLLYCRAFT

Year Built: 1992

Model: Motor Yacht

Price: \$549,000 USD

Location: United States

LOA: 57' (17.37m)

Beam: 17.25

Max Draft: 3' 6" (1.07m)

Cruise Speed: 18 Knots Kts. (21 MPH)

Our experienced yacht broker, Andrey Shestakov, will help you choose and buy a yacht that best suits your needs **JUST BEARLY III — TOLLYCRAFT** from our catalogue. Presently, at Shestakov Yacht Sales Inc., we have a wide variety of yachts available on our sale's list. We also work in close contact with all the big yacht manufacturers from all over the world.

If you would like to buy a yacht **JUST BEARLY III — TOLLYCRAFT** or would like help answering any questions concerning purchasing, selling or chartering a yacht, please call **+1(954)274-4435**

TABLE OF CONTENTS

TABLE OF CONTENTS	2
SPECIFICATIONS	3
Overview	3
Basic Information	3
Dimensions	4
Speed, Capacities and Weight	4
Accommodations	4
Hull and Deck Information	4
Engine Information	4
PHOTOS	5
55	14
56	14
57	14
58	14
59	14
60	14
61	15
CONTACTS	16
Contact details	16
Telephones	16
Office hours	16
Address	16

SPECIFICATIONS

Overview

Just Bearly III is an exceptional example of the well regarded 57 Tollycraft Widebody Motoryacht. Northwest USA, designed and built, the Tollycraft 57 features a huge cockpit, Full Beam Salon and Master stateroom with lots of extra storage everywhere, Easy Sidewalk style, built in steps to the bow and command bridge, large Gourmet galley and Pilothouse Sette seating and Three nice size staterooms and two full heads. Approximate Cruise 18kts.

This vessel has received an incredible amount of upgrades, love, consistant annual maintenance and improvements since her current owner purchased her in 2001. Possible West Coast Florida Slip availability to purchase or lease. **Don't let this opportunity pass you by...**

SOME OF "JB III"s, MANY HIGHLIGHTS INCLUDE...

- **Brand New Yacht to the market, same owner since 2001**
- **Twin MTU Power With Low Hours**
- **Two ONAN Generators In Sound Shields, 8 & 20KW**
- **Tender and Hydraulic Transome Tender Lift**
- **Painted White Hull, very Clean Engine Room**
- **Yacht Controller, for easy remote Docking Station**
- **Bow and Stern Thrusters**
- **Updated interior**
- **Cockpit Sunshade**
- **Satellite TV System**
- **3 Stations Of Mathers, Electronic Engine Controls**
- **Vacuflush Heads**
- **New seperate Washer & Dryer**
- **Open Air Command bridge with Stidd Captains Chairs**
- **12' AB Inflatable With Center Console , Yamaha 40HP, Tender Lift**

Basic Information

Category: Motor Yacht

Model Year: 1992

Year Built: 1992

Country: United States

Dimensions

LOA: 57' (17.37mm)

Beam: 17.25

Max Draft: 3' 6" (1.07mm)

Speed, Capacities and Weight

Cruise Speed: 18 Knots Kts. (21 MPH)

Water Capacity: 280 Gallons

Holding Tank: 100 Gal Gallons

Fuel Capacity: 1200 Gal Gallons

Accommodations

Total Cabins: 3

Total Heads: 2

Hull and Deck Information

Hull Material: Fiberglass

Engine Information

Engines: 2

Manufacturer: MTU

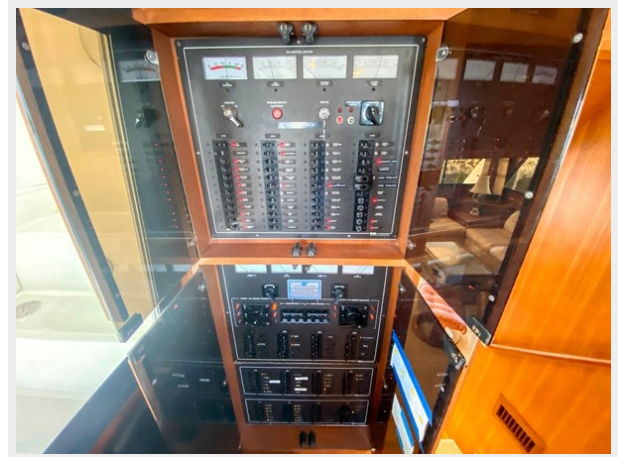
Engine Type: Inboard

Fuel Type: Diesel

PHOTOS











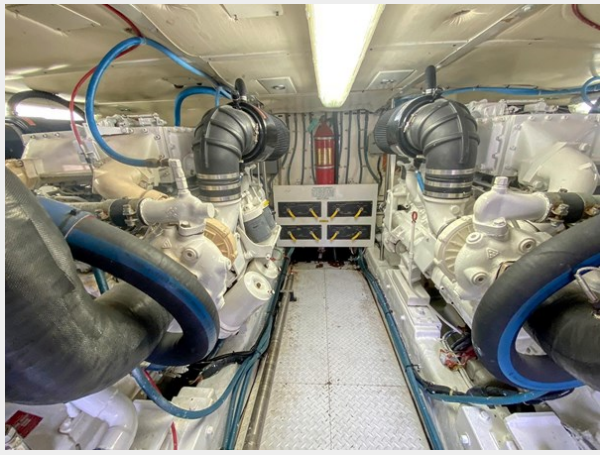








55



56



57



58



59



60



61



CONTACTS

Andrey Shestakov, leading yacht broker of the sales department of Shestakov Yacht Sales Inc. Shestakov Yacht Sales Inc., the official representative of the Miami/Fort Lauderdale FL headquarters.

Contact details

Email: andrey@shestakovyachtsales.com

Web: shestakovyachtsales.com/en/

Telephones

USA: +1(954)274-4435

Office hours

Monday – Saturday: **9:00 - 21:00** EDT

Sunday: **closed**

Address



Harbour Towne Marina, 850 NE 3rd St,
STE 213, Dania, FL 33004