

PARADISE — CRUISERS YACHTS



Builder: CRUISERS YACHTS

Year Built: 2002

Model: Motor Yacht

Price: PRICE ON APPLICATION

LOA: 44' (13.41mm)

Beam: 15.5

Min Draft: 3' 6" (1.07mm)

Max Draft: 3' 6" (1.07mm)

Cruise Speed: 18 Knots Kts. (21 MPH)

Max Speed: 26 Knots Kts. (30 MPH)

Our experienced yacht broker, Andrey Shestakov, will help you choose and buy a yacht that best suits your needs **Paradise — CRUISERS YACHTS** from our catalogue. Presently, at **Shestakov Yacht Sales Inc.**, we have a wide variety of yachts available on our sale's list. We also work in close contact with all the big **yacht manufacturers** from all over the world.

If you would like to buy a yacht **Paradise — CRUISERS YACHTS** or would like help answering any questions concerning purchasing, selling or chartering a yacht, please call **+1(954)274-4435**

TABLE OF CONTENTS

TABLE OF CONTENTS	2
SPECIFICATIONS	5
Overview	5
Basic Information	5
Dimensions	5
Speed, Capacities and Weight	5
Accommodations	5
Hull and Deck Information	5
Engine Information	5
PHOTOS	6
0_2791992_44_cruisers_starboard_profile	6
1_2791992_44_cruisers_starbaord_aft_profile	6
3_2791992_44_cruisers_aft_profile	6
2_2791992_44_cruisers_port_aft_profile	6
4_2791992_44_cruisers_anchor_windlass1	6
5_2791992_44_cruisers_anchor_windlass2	6
6_2791992_44_cruisers_foredeck	6
7_2791992_44_cruisers_foredeck_aft	6
8_2791992_44_cruisers_port_side_deck1	7
9_2791992_44_cruisers_port_side_deck2	7
10_2791992_44_cruisers_starboard_side_deck1	7
11_2791992_44_cruisers_starbaord_side_deck2	7
12_2791992_44_cruisers_helm1	7
13_2791992_44_cruisers_helm2	7
14_2791992_44_cruisers_helm_port_seating	7
15_2791992_44_cruisers_sundeck_forward	7
16_2791992_44_cruisers_sundeck_aft	8
17_2791992_44_cruisers_sundeck_port	8

18_2791992_44_cruisers_sundeck_starboard	8
19_2791992_44_cruisers_sundeck_wetbar	8
20_2791992_44_cruisers_sundeck_swimplatform_stairs	8
21_2791992_44_cruisers_tender	8
22_2791992_44_cruisers_tender_covered	8
23_2791992_44_cruisers_tender_outboard	8
24_2791992_44_cruisers_salon_forward	8
25_2791992_44_cruisers_salon_aft	8
26_2791992_44_cruisers_salon_port	9
27_2791992_44_cruisers_salon_port_aft	9
28_2791992_44_cruisers_salon_starboard	9
29_2791992_44_cruisers_salon_starboard_seating	9
30_2791992_44_cruisers_galley1	9
31_2791992_44_cruisers_galley2	9
32_2791992_44_cruisers_dinette	9
33_2791992_44_cruisers_master_stateroom	9
34_2791992_44_cruisers_master_stateroom_port	9
35_2791992_44_cruisers_master_stateroom_starboard	9
37_2791992_44_cruisers_master_stateroom_head	10
36_2791992_44_cruisers_master_stateroom_forward	10
38_2791992_44_cruisers_master_stateroom_tub_shower	10
39_2791992_44_cruisers_forward_guest_stateroom	10
40_2791992_44_cruisers_forward_guest_stateroom_port	10
41_2791992_44_cruisers_forward_guest_stateroom_starboard	10
42_2791992_44_cruisers_starboard_guest_stateroom	10
43_2791992_44_cruisers_guest_head	10
44_2791992_44_cruisers_washer_dryer	11
45_2791992_44_cruisers_engine_room_access	11
46_2791992_44_cruisers_engine_room_forward	11

47_2791992_44_cruisers_engine_room_aft	11
49_2791992_44_cruisers_port_racor_fuel_filter	11
48_2791992_44_cruisers_port_main_engine	11
51_2791992_44_cruisers_starboard_racor_fuel_filter	11
50_2791992_44_cruisers_starboard_main_engine	11
52_2791992_44_cruisers_oil_change_system	12
53_2791992_44_cruisers_water_heater	12
54_2791992_44_cruisers_generator_sound_box	12
55_2791992_44_cruisers_generator	12
57_2791992_44_cruisers_battery_charger	12
56_2791992_44_cruisers_generator_racor_fuel_filter	12
CONTACTS	13
Contact details	13
Telephones	13
Office hours	13
Address	13

SPECIFICATIONS

Overview

Paradise is a 2002 44' Cruisers 4450 motoryacht in good condition. She offers twin Volvo Penta 480 HP diesel main engines, Onan 11 kW generator, main engines and generator fresh water flushing system and a 3 stateroom 2 head layout with a full-beam master stateroom aft. With her 17' attainable height above the waterline, she is a perfect Great Loop candidate.

Basic Information

Category: Motor Yacht

Model Year: 2002

Year Built: 2002

Dimensions

LOA: 44' (13.41mm)

Beam: 15.5

Min Draft: 3' 6" (1.07mm)

Max Draft: 3' 6" (1.07mm)

Speed, Capacities and Weight

Cruise Speed: 18 Knots Kts. (21 MPH)

Max Speed: 26 Knots Kts. (30 MPH)

Water Capacity: 140 Gallons

Holding Tank: 100 Gal Gallons

Fuel Capacity: 500 Gal Gallons

Accommodations

Total Cabins: 3

Total Heads: 2

Hull and Deck Information

Hull Material: Fiberglass

Engine Information

Engines: 1

Manufacturer: Volvo Penta

PHOTOS

0_2791992_44_cruisers_starboard_profile



1_2791992_44_cruisers_starbaord_ aft_profile



2_2791992_44_cruisers_port_ aft_profile



3_2791992_44_cruisers_ aft_profile



4_2791992_44_cruisers_anchor_windlass1



5_2791992_44_cruisers_anchor_windlass2



6_2791992_44_cruisers_foredeck



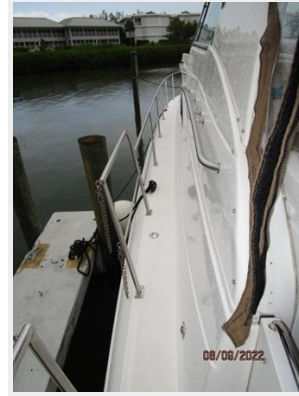
7_2791992_44_cruisers_foredeck_ aft



8_2791992_44_cruisers_port_side_deck1



9_2791992_44_cruisers_port_side_deck2



10_2791992_44_cruisers_starboard_side_deck1



11_2791992_44_cruisers_starbaord_side_deck2



12_2791992_44_cruisers_helm1



13_2791992_44_cruisers_helm2



14_2791992_44_cruisers_helm_port_seating



15_2791992_44_cruisers_sundeck_forward



16_2791992_44_cruisers_sundeck_aft



17_2791992_44_cruisers_sundeck_port



18_2791992_44_cruisers_sundeck_starboard



19_2791992_44_cruisers_sundeck_wetbar



20_2791992_44_cruisers_sundeck_swimplatform_stairs



21_2791992_44_cruisers_tender



22_2791992_44_cruisers_tender_covered



23_2791992_44_cruisers_tender_outboard



24_2791992_44_cruisers_salon_forward



25_2791992_44_cruisers_salon_aft



26_2791992_44_cruisers_salon_port



27_2791992_44_cruisers_salon_port_aft



28_2791992_44_cruisers_salon_starboard



29_2791992_44_cruisers_salon_starboard_seating



30_2791992_44_cruisers_galley1



31_2791992_44_cruisers_galley2



32_2791992_44_cruisers_dinette



33_2791992_44_cruisers_master_stateroom



34_2791992_44_cruisers_master_stateroom_port



35_2791992_44_cruisers_master_stateroom_starboard



36_2791992_44_cruisers_master_stateroom_forward



37_2791992_44_cruisers_master_stateroom_head



38_2791992_44_cruisers_master_stateroom_tub_shower



39_2791992_44_cruisers_forward_guest_stateroom



40_2791992_44_cruisers_forward_guest_stateroom_port 41_2791992_44_cruisers_forward_guest_stateroom_starboard



42_2791992_44_cruisers_starboard_guest_stateroom



43_2791992_44_cruisers_guest_head



44_2791992_44_cruisers_washer_dryer



45_2791992_44_cruisers_engine_room_access



46_2791992_44_cruisers_engine_room_forward



47_2791992_44_cruisers_engine_room_aft



48_2791992_44_cruisers_port_main_engine



49_2791992_44_cruisers_port_racor_fuel_filter



50_2791992_44_cruisers_starboard_main_engine



51_2791992_44_cruisers_starboard_racor_fuel_filter



52_2791992_44_cruisers_oil_change_system



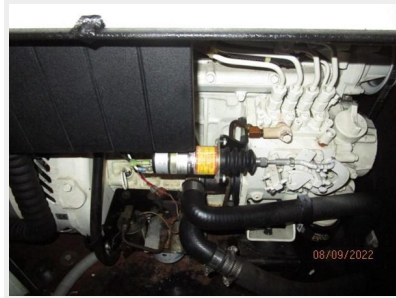
53_2791992_44_cruisers_water_heater



54_2791992_44_cruisers_generator_sound_box



55_2791992_44_cruisers_generator



56_2791992_44_cruisers_generator_racor_fuel_filter



57_2791992_44_cruisers_battery_charger



CONTACTS

Andrey Shestakov, leading yacht broker of the sales department of Shestakov Yacht Sales Inc. Shestakov Yacht Sales Inc., the official representative of the Miami/Fort Lauderdale FL headquarters.

Contact details

Email:
andrey@shestakovyachtsales.com

Web: shestakovyachtsales.com/en/

Telephones

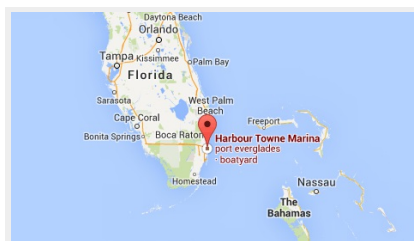
USA: **+1(954)274-4435**

Office hours

Monday - Saturday: **9:00 - 21:00** EDT

Sunday: **closed**

Address



Harbour Towne Marina, 850 NE 3rd
St, STE 213, Dania, FL 33004