

NO NAME — REGAL



Builder: REGAL

Year Built: 2020

Model: Cruising Yacht

Price: PRICE ON APPLICATION

Location: United States

LOA: 38' (11.58mm)

Beam: 11.91

Min Draft: 2' 7" (0.79mm)

Max Draft: 1' 11" (0.58mm)

Cruise Speed: 26.07 Knots Kts. (30 MPH)

Max Speed: 39.1 Knots Kts. (45 MPH)

Our experienced yacht broker, Andrey Shestakov, will help you choose and buy a yacht that best suits your needs **NO NAME — REGAL** from **our catalogue**. Presently, at **Shestakov Yacht Sales Inc.**, we have a wide variety of yachts available on **our sale's list**. We also work in close contact with all the big **yacht manufacturers** from all over the world.

If you would like to buy a yacht **NO NAME — REGAL** or would like help answering any questions concerning purchasing, selling or chartering a yacht, please call **+1(954)274-4435**

TABLE OF CONTENTS

TABLE OF CONTENTS	2
SPECIFICATIONS	4
Overview	4
Basic Information	4
Dimensions	4
Speed, Capacities and Weight	4
Accommodations	5
Hull and Deck Information	5
Engine Information	5
PHOTOS	6
45	13
46	13
47	13
48	13
49	13
50	14
51	14
53	14
52	14
54	14
55	14
56	15
57	15
58	15
59	15
60	15
CONTACTS	16
Contact details	16

Telephones	16
Office hours	16
Address	16

SPECIFICATIONS

Overview

The Regal 38 Grande Coupe is unparalleled in its luxurious style, size, and upscale amenities. With endless entertainment and relaxation, whether in the sun or the salon the 38 Grand Coupe sets a new standard.

Key Features

- Extended Warranty 6/2025
- Joystick Docking
- Low Hours
- New Risers/ Manifolds
- Recent Service/ Bottom Job
- Electric Swim Step

Basic Information

Category: Cruising Yacht

Model Year: 2020

Year Built: 2020

Country: United States

Dimensions

LOA: 38' (11.58mm)

Beam: 11.91

Min Draft: 2' 7" (0.79mm)

Max Draft: 1' 11" (0.58mm)

Speed, Capacities and Weight

Cruise Speed: 26.07 Knots Kts. (30 MPH)

Max Speed: 39.1 Knots Kts. (45 MPH)

Water Capacity: 55 Gallons

Holding Tank: 40 Gal Gallons

Fuel Capacity: 260 Gal Gallons

Accommodations

Total Cabins: 2

Total Heads: 1

Hull and Deck Information

Hull Material: Fiberglass

Engine Information

Engines: 2

Manufacturer: Volvo

Engine Type: Inboard

Fuel Type: Gas/Petrol

PHOTOS



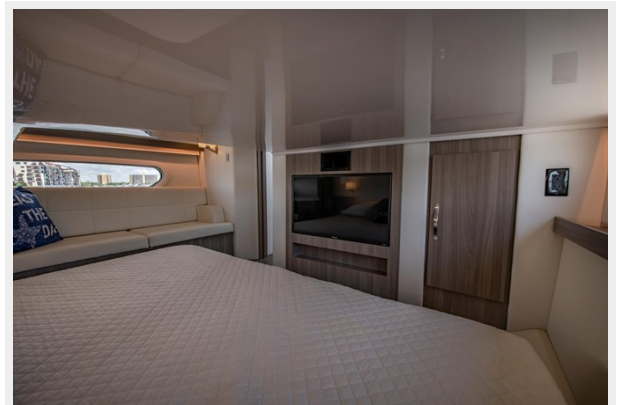














45



46



47



48



49



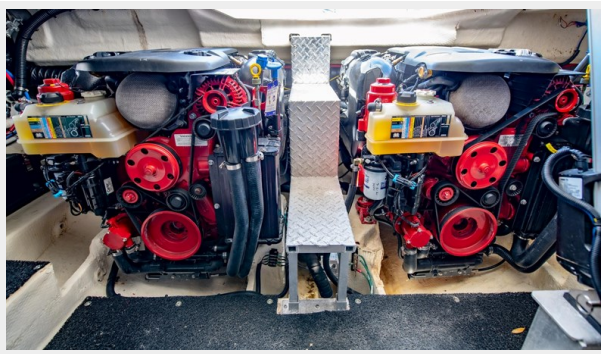
50



51



52



53



54



55



56



57



58



59



60



CONTACTS

Andrey Shestakov, leading yacht broker of the sales department of Shestakov Yacht Sales Inc. Shestakov Yacht Sales Inc., the official representative of the Miami/Fort Lauderdale FL headquarters.

Contact details

Email: **andrey@shestakovyachtsales.com**

Web: shestakovyachtsales.com/en/

Telephones

USA: **+1(954)274-4435**

Office hours

Monday – Saturday: **9:00 - 21:00** EDT

Sunday: **closed**

Address



Harbour Towne Marina, 850 NE 3rd St, STE 213, Dania, FL 33004