

## STILLWATER — BENETEAU



**Builder:** BENETEAU

**Year Built:** 2015

**Model:** cruiser

**Price:** \$549,000 USD

**Location:** United States

**LOA:** 49' (14.94mm)

**Beam:** 14

**Max Draft:** 3' 5" (1.04mm)

**Cruise Speed:** 24 Knots Kts. (28 MPH)

**Max Speed:** 27 Knots Kts. (31 MPH)

Our experienced yacht broker, Andrey Shestakov, will help you choose and buy a yacht that best suits your needs **STILLWATER — BENETEAU** from our catalogue. Presently, at Shestakov Yacht Sales Inc., we have a wide variety of yachts available on our sale's list. We also work in close contact with all the big yacht manufacturers from all over the world.

If you would like to buy a yacht **STILLWATER — BENETEAU** or would like help answering any questions concerning purchasing, selling or chartering a yacht, please call **+1(954)274-4435**

---

# TABLE OF CONTENTS

---

TABLE OF CONTENTS	2
SPECIFICATIONS	3
Overview	3
Basic Information	3
Dimensions	3
Speed, Capacities and Weight	4
Accommodations	4
Hull and Deck Information	4
Engine Information	4
PHOTOS	5
CONTACTS	10
Contact details	10
Telephones	10
Office hours	10
Address	10

---

# SPECIFICATIONS

---

## Overview

---

This Beneteau GT 49 is the highly sought after 3 cabin layout and is in phenomenal condition, with low hours and all the options available!

The Beneteau GT 49 offers beautiful lines, powerful engines, and a timeless design. With its tender garage, this boat makes long trips comfortable and short jaunts exciting. The hydraulic swim platform offers the owner a teak beach or jet ski storage. A massive sunroof allows for plenty of sunlight and fresh air while the cabin glass doors can close the boat up for extended season cruising.

### UPDATES 2021:

Prop Speed

reupholstered sun pad, sunshade, and cockpit lounge

All new carpeting throughout the vessel

All new batteries

ARID Bilge system installed

---

## Basic Information

---

**Category:** cruiser

**Sub Category:** Express

**Model Year:** 2015

**Year Built:** 2015

**Country:** United States

---

## Dimensions

---

**LOA:** 49' (14.94mm)

**Beam:** 14

**Max Draft:** 3' 5" (1.04mm)

---

## Speed, Capacities and Weight

---

**Cruise Speed:** 24 Knots Kts. (28 MPH)

**Max Speed:** 27 Knots Kts. (31 MPH)

**Water Capacity:** 170 Gallons

**Holding Tank:** 20 Gal Gallons

**Fuel Capacity:** 344 Gal Gallons

---

## Accommodations

---

**Total Cabins:** 3

---

## Hull and Deck Information

---

**Hull Material:** Fiberglass

---

## Engine Information

---

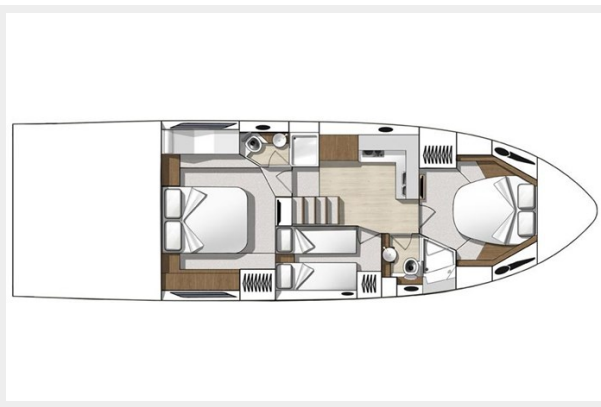
**Engines:** 2

**Manufacturer:** Volvo Penta

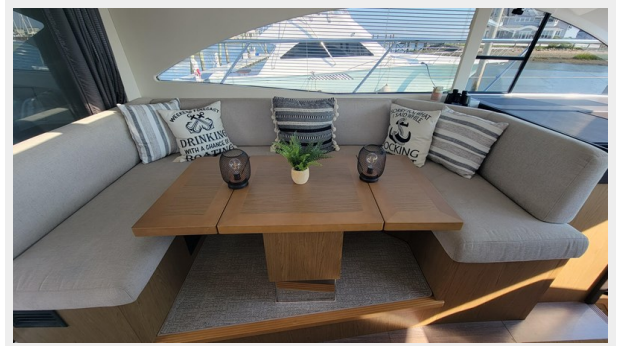
**Engine Type:** Inboard

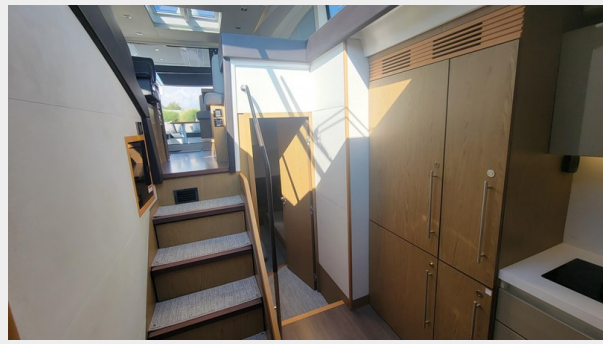
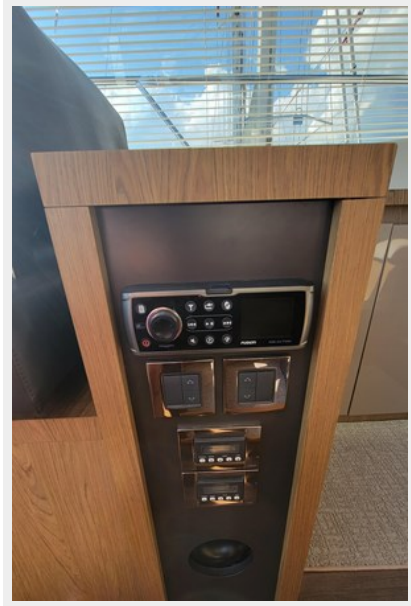
**Fuel Type:** Diesel

# PHOTOS

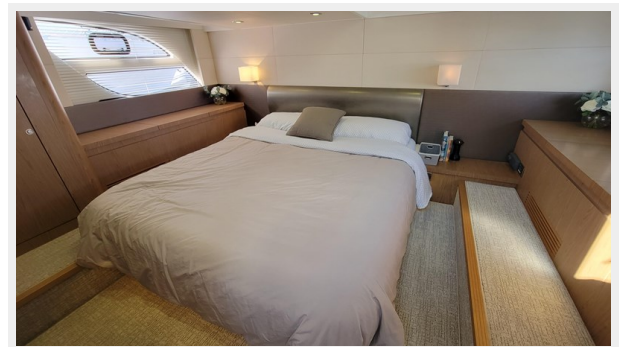
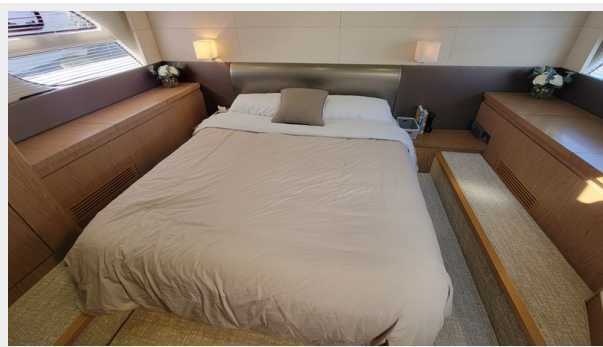
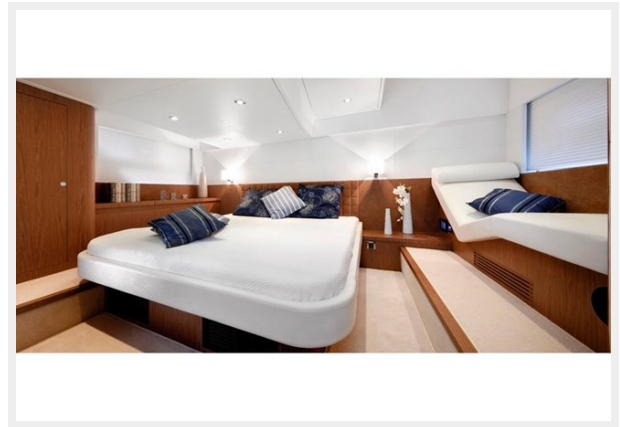
















# CONTACTS

---

Andrey Shestakov, leading yacht broker of the sales department of Shestakov Yacht Sales Inc. Shestakov Yacht Sales Inc., the official representative of the Miami/Fort Lauderdale FL headquarters.

## Contact details

---

Email: [andrey@shestakovyachtsales.com](mailto:andrey@shestakovyachtsales.com)

Web: [shestakovyachtsales.com/en/](http://shestakovyachtsales.com/en/)

## Telephones

---

USA: +1(954)274-4435

## Office hours

---

Monday – Saturday: **9:00 - 21:00** EDT

Sunday: **closed**

## Address

---



Harbour Towne Marina, 850 NE 3rd St,  
STE 213, Dania, FL 33004