

76 YACHT — SUNSEEKER



Builder: SUNSEEKER

Year Built: 2022

Model: Motor Yacht

Price: PRICE ON APPLICATION

Location: United States

LOA: 76' (23.16mm)

Beam: 19.5

Max Draft: 5' 7" (1.7mm)

Max Speed: 25 Knots Kts. (29 MPH)

Our experienced yacht broker, Andrey Shestakov, will help you choose and buy a yacht that best suits your needs **76 Yacht — SUNSEEKER** from our catalogue. Presently, at Shestakov Yacht Sales Inc., we have a wide variety of yachts available on our sale's list. We also work in close contact with all the big yacht manufacturers from all over the world.

If you would like to buy a yacht **76 Yacht — SUNSEEKER** or would like help answering any questions concerning purchasing, selling or chartering a yacht, please call **+1(954)274-4435**

TABLE OF CONTENTS

TABLE OF CONTENTS	2
SPECIFICATIONS	5
Overview	5
Basic Information	6
Dimensions	6
Speed, Capacities and Weight	6
Accommodations	6
Hull and Deck Information	6
Engine Information	7
PHOTOS	8
1_2792476_	8
2_2792476_	8
3_2792476_	8
4_2792476_	8
5_2792476_	8
6_2792476_	8
7_2792476_	9
8_2792476_	9
9_2792476_	9
10_2792476_	9
11_2792476_	9
12_2792476_	9
13_2792476_	10
14_2792476_	10
15_2792476_	10
16_2792476_	10
17_2792476_	10
18_2792476_	10

19_2792476_	11
20_2792476_	11
21_2792476_	11
22_2792476_	11
23_2792476_	11
24_2792476_	11
25_2792476_	12
26_2792476_	12
27_2792476_	12
28_2792476_	12
29_2792476_	12
30_2792476_	12
31_2792476_	13
32_2792476_	13
33_2792476_	13
34_2792476_	13
35_2792476_	13
36_2792476_	13
37_2792476_	14
38_2792476_	14
39_2792476_	14
40_2792476_	14
41_2792476_	14
42_2792476_	14
43_2792476_	15
44_2792476_	15
45_2792476_	15
46_2792476_	15
47_2792476_	15

48_2792476_	15
49_2792476_	16
50_2792476_	16
51_2792476_	16
52_2792476_	16
53_2792476_	16
CONTACTS	17
Contact details	17
Telephones	17
Office hours	17
Address	17

SPECIFICATIONS

Overview

Skip the waiting line and jump on a “like-new” 2022 Sunseeker 76 Yacht right away! Very well taken care of and full of upgrades. Here are some of the best options included:

- New Aft Galley layout!
- Twin MAN v12 1550HP engines with 250hrs
- Twin Cummins Onan 60Hz 29kW generators with 830hrs
- Sleipner SPS66 hull stabilizer unit with Vector Fin VF1050
- Hydraulic Sleipner bow and stern thruster
- Upgraded black painted hardtop with electric canopy and aft electric awning
- Jacuzzi on flybridge
- Beach Club Package included with Hot/Cold shower, BBQ Grill and bench by the transom
- Upgraded cockpit lounge seating, fridge and ice maker
- Upgraded XL Gray water tank
- Flybridge teak decking
- SIMRAD electronics package
- Sleipner hull stabilizer unit with Vector Fin
- 3rd Aft docking station
- Beach Club Package included with overhead Hot/Cold shower and mirror, BBQ Grill and a seating bench
- Upgraded Cockpit fridge and ice maker
- Upgraded Sonos Audio and Sonance Extreme speakers system inside out
- Full-size stainless-steel fridge and two drawer freezer (250 liters fridge capacity and 120 liters freezer capacity)
- Wine cooler, Smeg Stove and Miele microwave oven
- X2 stainless steel drawer fridges with 30 litre capacity fitted under the bow sunbeds
- Full wet bar on flybridge that includes refrigerated cool box, BBQ grill, ice maker, fridge and sink
- Fire alarm system - Fireboy Xintex FR-200 2 zone
- Extra drawer fridge on flybridge
- Additional AC 110v double Socket fitted in the flybridge wet bar
- Sprung mattresses throughout
- Tecma Silence Plus toilets throughout
- 4 Cabin layout. Port Mid Cabin has two single beds with electrically operated slider to form an occasional double
- Full cover package on flybridge, cockpit and bow area
- Slide out jet ski and tender chocks
- Separate Miele washing machine and Miele tumble dryer in crew quarter
- Hydraulic platform

- Oil change system for engines gearboxes and generators
- Being offered by the sole Sunseeker dealer in the East Coast of US

Basic Information

Category: Motor Yacht

Sub Category: Flybridge

Model Year: 2022

Year Built: 2022

Country: United States

Dimensions

LOA: 76' (23.16mm)

Beam: 19.5

Max Draft: 5' 7" (1.7mm)

Speed, Capacities and Weight

Max Speed: 25 Knots Kts. (29 MPH)

Max Speed Range: 340 Kts.

Water Capacity: 370 Gallons

Holding Tank: 115 Gal Gallons

Fuel Capacity: 1585 Gal Gallons

Accommodations

Total Cabins: 4

Total Heads: 4

Hull and Deck Information

Hull Material: Fiberglass

Engine Information

Engines: 2

Manufacturer: MAN

Engine Type: Inboard

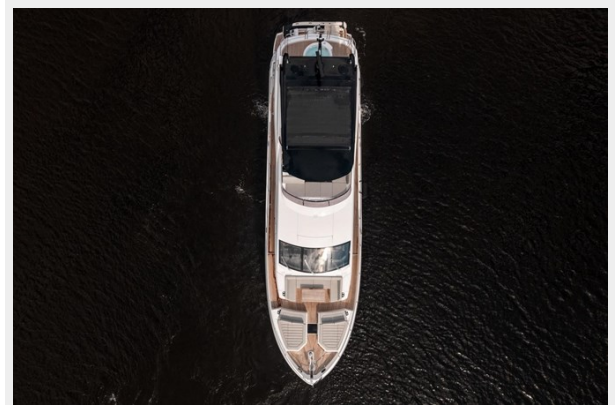
Fuel Type: Diesel

PHOTOS

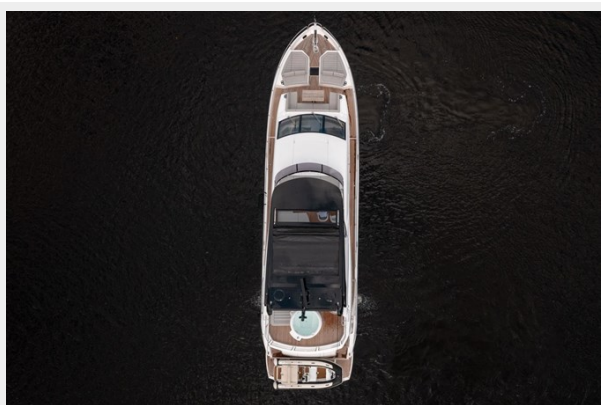
1_2792476_



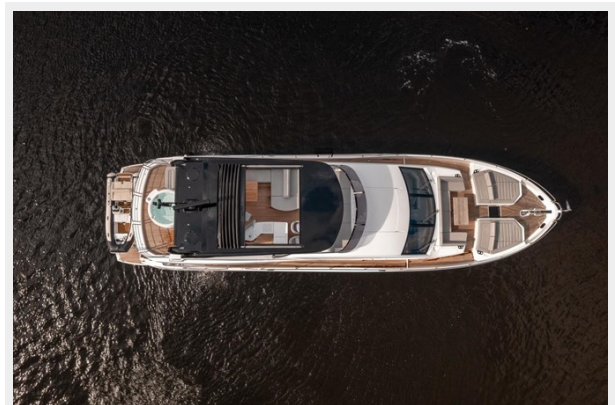
2_2792476_



3_2792476_



4_2792476_



5_2792476_



6_2792476_



7_2792476_



8_2792476_



9_2792476_



10_2792476_



11_2792476_



12_2792476_



13_2792476_



14_2792476_



15_2792476_



16_2792476_



17_2792476_



18_2792476_



19_2792476_



20_2792476_



21_2792476_



22_2792476_



23_2792476_



24_2792476_



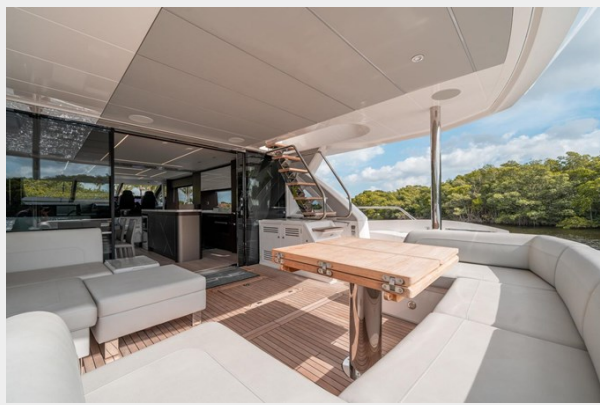
25_2792476_



26_2792476_



27_2792476_



28_2792476_



29_2792476_



30_2792476_



31_2792476_



32_2792476_



33_2792476_



34_2792476_



35_2792476_



36_2792476_



37_2792476_



38_2792476_



39_2792476_



40_2792476_



41_2792476_



42_2792476_



43_2792476_



44_2792476_



45_2792476_



46_2792476_



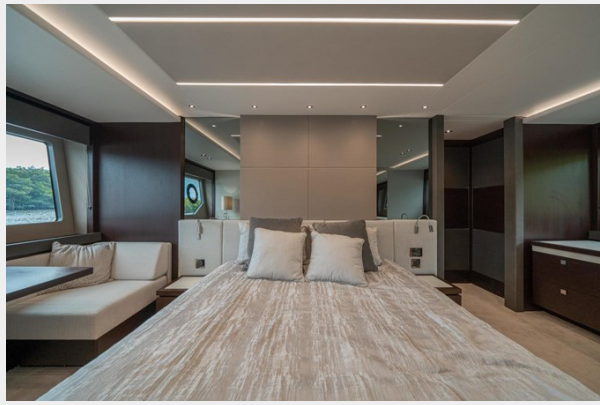
47_2792476_



48_2792476_



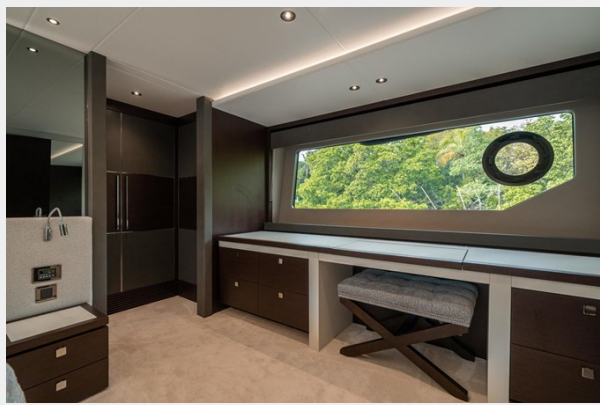
49_2792476_



50_2792476_



51_2792476_



52_2792476_



53_2792476_



CONTACTS

Andrey Shestakov, leading yacht broker of the sales department of Shestakov Yacht Sales Inc. Shestakov Yacht Sales Inc., the official representative of the Miami/Fort Lauderdale FL headquarters.

Contact details

Email: andrey@shestakovyachtsales.com

Web: shestakovyachtsales.com/en/

Telephones

USA: +1(954)274-4435

Office hours

Monday – Saturday: **9:00 - 21:00** EDT

Sunday: **closed**

Address



Harbour Towne Marina, 850 NE 3rd St,
STE 213, Dania, FL 33004