

## LIV MAS — OCEAN ALEXANDER



**Builder:** OCEAN ALEXANDER

**Year Built:** 2017

**Model:** Motor Yacht

**Price:** PRICE ON APPLICATION

**LOA:** 70' 6" (21.49m)

**Beam:** 18.16

**Max Draft:** 5' (1.52m)

Our experienced yacht broker, Andrey Shestakov, will help you choose and buy a yacht that best suits your needs **Liv MAs — OCEAN ALEXANDER** from **our catalogue**. Presently, at **Shestakov Yacht Sales Inc.**, we have a wide variety of yachts available on **our sale's list**. We also work in close contact with all the big **yacht manufacturers** from all over the world.

If you would like to buy a yacht **Liv MAs — OCEAN ALEXANDER** or would like help answering any questions concerning purchasing, selling or chartering a yacht, please call **+1(954)274-4435**

# TABLE OF CONTENTS

TABLE OF CONTENTS	2
SPECIFICATIONS	7
Overview	7
Basic Information	7
Dimensions	7
Speed, Capacities and Weight	7
Accommodations	7
Hull and Deck Information	8
Engine Information	8
PHOTOS	9
8470737_20220830174802957_1_XLARGE	9
8470737_20220830174815273_1_XLARGE	9
8470737_20220830174820361_1_XLARGE	9
8470737_20220830174825353_1_XLARGE	9
8470737_20220830174835863_1_XLARGE	9
8470737_20220830174842180_1_XLARGE	9
8470737_20220830174847392_1_XLARGE	10
8470737_20220830174852589_1_XLARGE	10
8470737_20220830174857566_1_XLARGE	10
8470737_20220830174902371_1_XLARGE	10
8470737_20220830174907508_1_XLARGE	10
8470737_20220830174913616_1_XLARGE	10
8470737_20220830174918399_1_XLARGE	11
8470737_20220830174923725_1_XLARGE	11
8470737_20220830174933753_1_XLARGE	11
8470737_20220830174940167_1_XLARGE	11
8470737_20220830174945752_1_XLARGE	11
8470737_20220830174958849_1_XLARGE	11

---

8470737_20220830175005439_1_XLARGE	12
8470737_20220830175012406_1_XLARGE	12
8470737_20220830175029386_1_XLARGE	12
8470737_20220830175023832_1_XLARGE	12
8470737_20220830175035534_1_XLARGE	12
8470737_20220830175041580_1_XLARGE	12
8470737_20220830175048020_1_XLARGE	13
8470737_20220830175054558_1_XLARGE	13
8470737_20220830175100533_1_XLARGE	13
8470737_20220830175107520_1_XLARGE	13
8470737_20220830175117743_1_XLARGE	13
8470737_20220830175125605_1_XLARGE	13
8470737_20220830175139462_1_XLARGE	14
8470737_20220830175133858_1_XLARGE	14
8470737_20220830175156575_1_XLARGE	14
8470737_20220830175144606_1_XLARGE	14
8470737_20220830175201713_1_XLARGE	14
8470737_20220830175207964_1_XLARGE	14
8470737_20220830175213631_1_XLARGE	15
8470737_20220830175219363_1_XLARGE	15
8470737_20220830175229567_1_XLARGE-1	15
8470737_20220830175224583_1_XLARGE	15
8470737_20220830175229567_1_XLARGE	15
8470737_20220830175239864_1_XLARGE	15
8470737_20220830175257727_1_XLARGE	16
8470737_20220830175303555_1_XLARGE	16
8470737_20220830175318110_1_XLARGE	16
8470737_20220830175310028_1_XLARGE	16
8470737_20220830175324307_1_XLARGE	16

---

---

8470737_20220830175329992_1_XLARGE	16
8470737_20220830175337568_1_XLARGE	17
8470737_20220830175344031_1_XLARGE	17
8470737_20220830175350617_1_XLARGE	17
8470737_20220830175356129_1_XLARGE	17
8470737_20220830174847392_1_XLARGE	17
8470737_20220830174852589_1_XLARGE	17
8470737_20220830174857566_1_XLARGE	18
8470737_20220830174902371_1_XLARGE	18
8470737_20220830174907508_1_XLARGE	18
8470737_20220830174913616_1_XLARGE	18
8470737_20220830174918399_1_XLARGE	18
8470737_20220830174923725_1_XLARGE	18
8470737_20220830174933753_1_XLARGE	19
8470737_20220830174940167_1_XLARGE	19
8470737_20220830174945752_1_XLARGE	19
8470737_20220830174958849_1_XLARGE	19
8470737_20220830175005439_1_XLARGE	19
8470737_20220830175012406_1_XLARGE	19
8470737_20220830175029386_1_XLARGE	20
8470737_20220830175023832_1_XLARGE	20
8470737_20220830175035534_1_XLARGE	20
8470737_20220830175041580_1_XLARGE	20
8470737_20220830175048020_1_XLARGE	20
8470737_20220830175054558_1_XLARGE	20
8470737_20220830175100533_1_XLARGE	20
8470737_20220830175107520_1_XLARGE	20
8470737_20220830175117743_1_XLARGE	21
8470737_20220830175125605_1_XLARGE	21

---



---

8470737_20220830175139462_1_XLARGE	21
8470737_20220830175133858_1_XLARGE	21
8470737_20220830175156575_1_XLARGE	21
8470737_20220830175144606_1_XLARGE	21
8470737_20220830175201713_1_XLARGE	22
8470737_20220830175207964_1_XLARGE	22
8470737_20220830175213631_1_XLARGE	22
8470737_20220830175219363_1_XLARGE	22
8470737_20220830175229567_1_XLARGE-1	22
8470737_20220830175224583_1_XLARGE	22
8470737_20220830175229567_1_XLARGE	23
8470737_20220830175239864_1_XLARGE	23
8470737_20220830175257727_1_XLARGE	23
8470737_20220830175303555_1_XLARGE	23
8470737_20220830175318110_1_XLARGE	23
8470737_20220830175310028_1_XLARGE	23
8470737_20220830175324307_1_XLARGE	24
8470737_20220830175329992_1_XLARGE	24
8470737_20220830175337568_1_XLARGE	24
8470737_20220830175344031_1_XLARGE	24
8470737_20220830175350617_1_XLARGE	24
8470737_20220830175356129_1_XLARGE	24
8470737_20220830175404321_1_XLARGE	25
8470737_20220830175409232_1_XLARGE	25
8470737_20220830175414952_1_XLARGE	25
8470737_20220830175424019_1_XLARGE	25
8470737_20220830175444881_1_XLARGE	25
8470737_20220830175431495_1_XLARGE	25
CONTACTS	26

---

---

Contact details	26
Telephones	26
Office hours	26
Address	26

---

# SPECIFICATIONS

---

## Overview

---

LLC OWNED

Call me and ask what that could mean for you?

Beneath the 70e's striking exterior is solid Ocean Alexander engineering — This model is

MADE IN AMERICA

The 70e's look makes it clear "e" stands for evolution. There is a clear sight line throughout the main deck and

amazing views from large windows. Everywhere you look, you'll see dedication to craftsmanship and know why

Ocean Alexander has earned a sterling reputation for safety, performance and fine engineering.

## Basic Information

---

**Category:** Motor Yacht

**Model Year:** 2017

**Year Built:** 2017

## Dimensions

---

**LOA:** 70' 6" (21.49mm)

**LWL:** 59' 8" (18.19mm)

**Beam:** 18.16

**Max Draft:** 5' (1.52mm)

## Speed, Capacities and Weight

---

**Water Capacity:** 300 Gallons

**Holding Tank:** 100 Gal Gallons

**Fuel Capacity:** 1040 Gal Gallons

## Accommodations

---

**Total Cabins:** 4

**Sleeps:** 10

**Total Heads:** 3

## Hull and Deck Information

---

**Hull Material:** Fiberglass

## Engine Information

---

**Engines:** 2

**Manufacturer:** Volvo Penta

**Engine Type:** Inboard

**Fuel Type:** Diesel

# PHOTOS

8470737\_20220830174802957\_1\_XLARGE 8470737\_20220830174815273\_1\_XLARGE



8470737\_20220830174820361\_1\_XLARGE 8470737\_20220830174825353\_1\_XLARGE



8470737\_20220830174835863\_1\_XLARGE 8470737\_20220830174842180\_1\_XLARGE





8470737\_20220830174847392\_1\_XLARGE 8470737\_20220830174852589\_1\_XLARGE



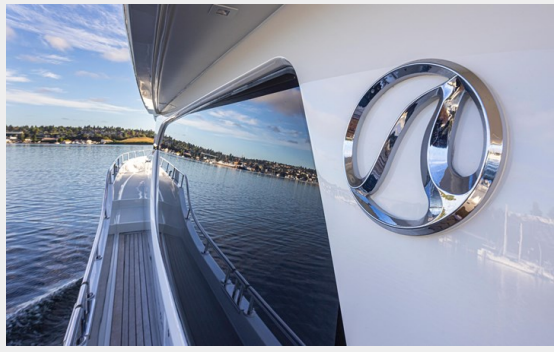
8470737\_20220830174857566\_1\_XLARGE 8470737\_20220830174902371\_1\_XLARGE



8470737\_20220830174907508\_1\_XLARGE 8470737\_20220830174913616\_1\_XLARGE



**8470737\_20220830174918399\_1\_XLARGE 8470737\_20220830174923725\_1\_XLARGE**



**8470737\_20220830174933753\_1\_XLARGE 8470737\_20220830174940167\_1\_XLARGE**



**8470737\_20220830174945752\_1\_XLARGE 8470737\_20220830174958849\_1\_XLARGE**





8470737\_20220830175005439\_1\_XLARGE 8470737\_20220830175012406\_1\_XLARGE



8470737\_20220830175023832\_1\_XLARGE 8470737\_20220830175029386\_1\_XLARGE



8470737\_20220830175035534\_1\_XLARGE 8470737\_20220830175041580\_1\_XLARGE





**8470737\_20220830175048020\_1\_XLARGE 8470737\_20220830175054558\_1\_XLARGE**



**8470737\_20220830175100533\_1\_XLARGE 8470737\_20220830175107520\_1\_XLARGE**



**8470737\_20220830175117743\_1\_XLARGE 8470737\_20220830175125605\_1\_XLARGE**



8470737\_20220830175133858\_1\_XLARGE 8470737\_20220830175139462\_1\_XLARGE



8470737\_20220830175144606\_1\_XLARGE 8470737\_20220830175156575\_1\_XLARGE



8470737\_20220830175201713\_1\_XLARGE 8470737\_20220830175207964\_1\_XLARGE





8470737\_20220830175213631\_1\_XLARGE 8470737\_20220830175219363\_1\_XLARGE



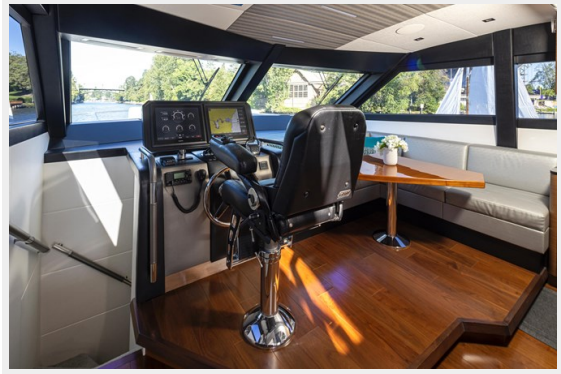
8470737\_20220830175224583\_1\_XLARGE 8470737\_20220830175229567\_1\_XLARGE-1



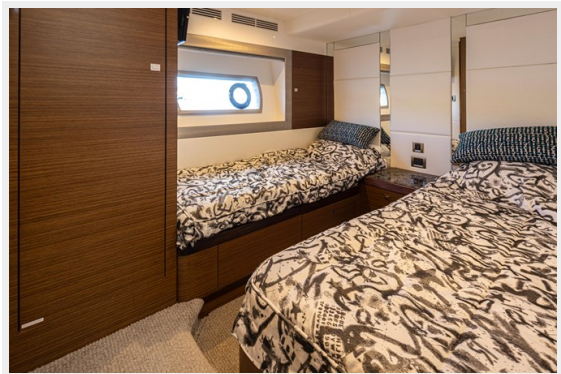
8470737\_20220830175229567\_1\_XLARGE 8470737\_20220830175239864\_1\_XLARGE



8470737\_20220830175257727\_1\_XLARGE 8470737\_20220830175303555\_1\_XLARGE



8470737\_20220830175310028\_1\_XLARGE 8470737\_20220830175318110\_1\_XLARGE



8470737\_20220830175324307\_1\_XLARGE 8470737\_20220830175329992\_1\_XLARGE





8470737\_20220830175337568\_1\_XLARGE 8470737\_20220830175344031\_1\_XLARGE



8470737\_20220830175350617\_1\_XLARGE 8470737\_20220830175356129\_1\_XLARGE



8470737\_20220830174847392\_1\_XLARGE 8470737\_20220830174852589\_1\_XLARGE



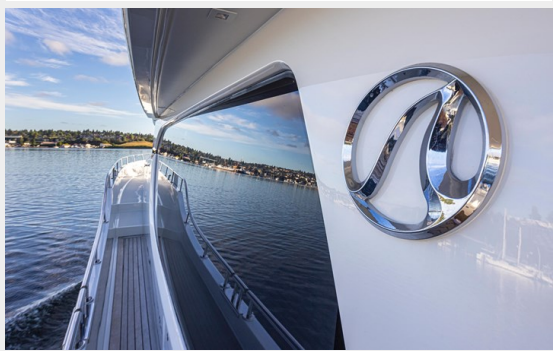
8470737\_20220830174857566\_1\_XLARGE 8470737\_20220830174902371\_1\_XLARGE



8470737\_20220830174907508\_1\_XLARGE 8470737\_20220830174913616\_1\_XLARGE



8470737\_20220830174918399\_1\_XLARGE 8470737\_20220830174923725\_1\_XLARGE





8470737\_20220830174933753\_1\_XLARGE 8470737\_20220830174940167\_1\_XLARGE



8470737\_20220830174945752\_1\_XLARGE 8470737\_20220830174958849\_1\_XLARGE



8470737\_20220830175005439\_1\_XLARGE 8470737\_20220830175012406\_1\_XLARGE





**8470737\_20220830175023832\_1\_XLARGE 8470737\_20220830175029386\_1\_XLARGE**



**8470737\_20220830175035534\_1\_XLARGE 8470737\_20220830175041580\_1\_XLARGE**



**8470737\_20220830175048020\_1\_XLARGE 8470737\_20220830175054558\_1\_XLARGE**



**8470737\_20220830175100533\_1\_XLARGE 8470737\_20220830175107520\_1\_XLARGE**





8470737\_20220830175117743\_1\_XLARGE 8470737\_20220830175125605\_1\_XLARGE



8470737\_20220830175133858\_1\_XLARGE 8470737\_20220830175139462\_1\_XLARGE



8470737\_20220830175144606\_1\_XLARGE 8470737\_20220830175156575\_1\_XLARGE



8470737\_20220830175201713\_1\_XLARGE 8470737\_20220830175207964\_1\_XLARGE



8470737\_20220830175213631\_1\_XLARGE 8470737\_20220830175219363\_1\_XLARGE



8470737\_20220830175224583\_1\_XLARGE 8470737\_20220830175229567\_1\_XLARGE-1





8470737\_20220830175229567\_1\_XLARGE 8470737\_20220830175239864\_1\_XLARGE



8470737\_20220830175257727\_1\_XLARGE 8470737\_20220830175303555\_1\_XLARGE



8470737\_20220830175310028\_1\_XLARGE 8470737\_20220830175318110\_1\_XLARGE



8470737\_20220830175324307\_1\_XLARGE 8470737\_20220830175329992\_1\_XLARGE



8470737\_20220830175337568\_1\_XLARGE 8470737\_20220830175344031\_1\_XLARGE



8470737\_20220830175350617\_1\_XLARGE 8470737\_20220830175356129\_1\_XLARGE





8470737\_20220830175404321\_1\_XLARGE 8470737\_20220830175409232\_1\_XLARGE



8470737\_20220830175414952\_1\_XLARGE 8470737\_20220830175424019\_1\_XLARGE



8470737\_20220830175431495\_1\_XLARGE 8470737\_20220830175444881\_1\_XLARGE



# CONTACTS

---

Andrey Shestakov, leading yacht broker of the sales department of Shestakov Yacht Sales Inc. Shestakov Yacht Sales Inc., the official representative of the Miami/Fort Lauderdale FL headquarters.

## Contact details

---

Email: **andrey@shestakovyachtsales.com**

Web: [shestakovyachtsales.com/en/](http://shestakovyachtsales.com/en/)

## Telephones

---

USA: **+1(954)274-4435**

## Office hours

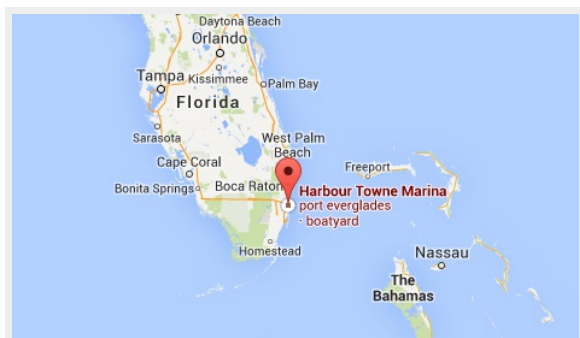
---

Monday - Saturday: **9:00 - 21:00** EDT

Sunday: **closed**

## Address

---



Harbour Towne Marina, 850 NE 3rd St, STE 213, Dania, FL 33004