

LIBERTY — ISA YACHTS



Builder: ISA YACHTS

Year Built: 2011

Model: Mega Yacht

Price: €16,900,000 EUR

Location: France

LOA: 164' 1" (50mm)

Beam: 29.52

Max Draft: 8' 5" (2.55mm)

Cruise Speed: 12 Knots Kts. (14 MPH)

Max Speed: 17 Knots Kts. (20 MPH)

Our experienced yacht broker, Andrey Shestakov, will help you choose and buy a yacht that best suits your needs **LIBERTY — ISA YACHTS** from our catalogue. Presently, at Shestakov Yacht Sales Inc., we have a wide variety of yachts available on our sale's list. We also work in close contact with all the big yacht manufacturers from all over the world.

If you would like to buy a yacht **LIBERTY — ISA YACHTS** or would like help answering any questions concerning purchasing, selling or chartering a yacht, please call **+1(954)274-4435**

TABLE OF CONTENTS

TABLE OF CONTENTS	2
SPECIFICATIONS	4
Overview	4
Basic Information	5
Dimensions	5
Speed, Capacities and Weight	5
Accommodations	5
Hull and Deck Information	5
Engine Information	6
PHOTOS	7
1	7
2	7
3	7
4	7
6.1	7
5	7
6	8
7	8
8.2	8
8.1	8
8.3	8
9.0.0	8
9.0.1	9
9.1	9
9.4	9
9.3	9
9.5	9
9.6	9

10	10
11.1	10
11	10
12.1	10
12	10
13	10
14	11
15	11
17	11
16	11
18	11
19	11
20	12
21	12
22	12
23	12
24	12
25	12
26	13
CONTACTS	14
Contact details	14
Telephones	14
Office hours	14
Address	14

SPECIFICATIONS

Overview

Motor yacht Liberty the 2011 50m ISA 500 Motor Yacht. This phenomenal vessel, as striking and timeless as the Arctic seas it was designed to sail, is a celebration of the prestigious ISA Yachts' heritage, craftsmanship, and innovation. At an impressive length of 50 meters, the ISA 500 is an architectural marvel that revolutionizes the codes of traditional yacht design. As soon as you see it, you will be awestruck by its domineering stature, sleek lines, and buoyant form. The alluring midnight blue painted steel-hull is reminiscent of the inky depths of the ocean, while the stunning silvery superstructure reflects the glittering water surface beneath the moonlight. This vessel is not just a cruising machine; it is a beacon of refined style and grandeur. The ISA 500 is powered by a robust dual-engine system, ensuring top-notch speed and performance. Its cruising range is up to 5000 nautical miles - significantly superior to many of its competitors. Thanks to its advanced propulsion system, it can comfortably reach peak speeds of approximately 16 knots, perfectly blending power with grace. Furthermore, the vessel is equipped with state-of-the-art stabilization systems to ensure smooth cruising, regardless of the sea state. Inside, the ISA 500 is just as breathtaking as its exterior would suggest. Designed by renowned maritime architects, the vessel can comfortably accommodate up to 12 guests in six luxuriously furnished suites. The gentle undertones of ash and walnut with plush upholstery beautifully complement the yacht's airy and spacious interiors. The thoughtful design extends to providing plenty of natural light with large windows in each room and skylights in the communal areas, creating an ambiance of harmony and relaxation. The master suite, located on the main deck, has its private terrace and a full-beam ensuite including a Jacuzzi and a walk-in wardrobe. The remaining guest cabins, each equipped with state-of-the-art entertainment systems and ensuite bathrooms, are located on the lower deck, offering panoramic sea views, ensuring an enjoyable and comfortable stay for every guest onboard. Big social gatherings aren't a problem in this masterpiece. With an elegant saloon, a fully equipped professional-grade galley, and generous outside deck spaces, entertaining guests on the ISA 500 is always a delight. The top sun deck flaunts a bar, a grill, and a whirlpool tub, offering an envious space for lounging, alfresco dining, and soaking up the sun. The crew quarters, designed for a team of nine, are fully fitted to ensure the utmost comfort for the crew onboard. The yacht's cutting-edge navigation and communication systems ensure safe and confident handling even under challenging weather conditions, making it a vessel reliable under any circumstances. The rugged yet sophisticated ISA 500 also provides amply for outdoor adventure enthusiasts. It comes packed with a wide selection of water toys and equipment—an on-board garage houses a jet ski, scuba diving gear, fishing equipment, and several tenders, making it perfectly equipped for any water-based fun or exploration. In conclusion, the 2011 50m ISA Yachts ISA 500 Motor Yacht is an epitome of excellence in design, elegance, and marine engineering. A testament to British craftsmanship, it's a floating palace that delivers unabated luxury, ensuring its owners and their guests experience a trip like never before. It truly is a yacht for those that will not settle for anything less but the best. So, be prepared to set sail on a journey marked by sophistication, comfort, and an unmatched experience on the crystal-clear azure waters.

Basic Information

Category: Mega Yacht

Sub Category: Mega Yacht

Model Year: 2011

Year Built: 2011

Refit Type: 10 YEARS REFIT

Country: France

Dimensions

LOA: 164' 1" (50mm)

Beam: 29.52

Max Draft: 8' 5" (2.55mm)

Speed, Capacities and Weight

Cruise Speed: 12 Knots Kts. (14 MPH)

Cruise Speed Range: 4400

Max Speed: 17 Knots Kts. (20 MPH)

Gross Tonnage: 495 Pounds

Water Capacity: 15000 Gallons

Fuel Capacity: 22982.97 Gal Gallons

Accommodations

Total Cabins: 6

Sleeps: 13

Hull and Deck Information

Hull Material: Steel

Exterior Designer: Andrea Vallicelli

Interior Designer: Rene Van Der Velden

Engine Information

Engines: 2

Manufacturer: MTU

Fuel Type: Diesel

PHOTOS

1



2



3



4



5



6.1



6



7



8.1



8.2



8.3



9.0.0



9.0.1



9.1



9.3



9.4



9.5



9.6



10



11.1



11



12.1



12



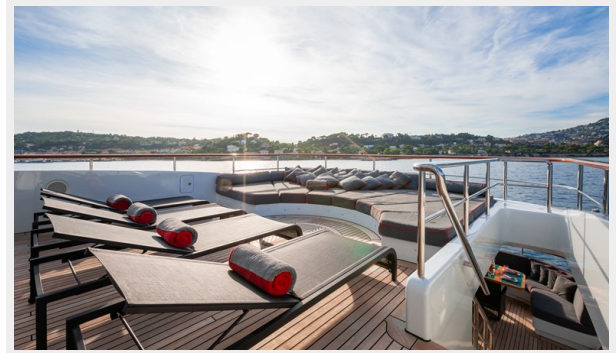
13



14



15



16



17



18



19



20



21



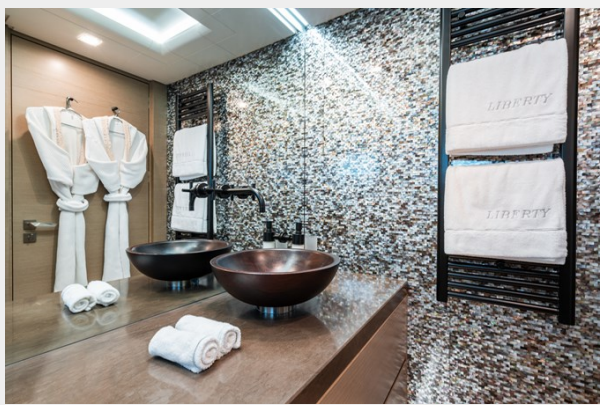
22



23



24



25



26



CONTACTS

Andrey Shestakov, leading yacht broker of the sales department of Shestakov Yacht Sales Inc. Shestakov Yacht Sales Inc., the official representative of the Miami/Fort Lauderdale FL headquarters.

Contact details

Email: andrey@shestakovyachtsales.com

Web: shestakovyachtsales.com/en/

Telephones

USA: +1(954)274-4435

Office hours

Monday – Saturday: **9:00 - 21:00** EDT

Sunday: **closed**

Address



Harbour Towne Marina, 850 NE 3rd St,
STE 213, Dania, FL 33004