

CLARE'S ESCAPE — VIKING



Builder: VIKING

LOA: 35' (10.67mm)

Year Built: 1985

Beam: 13.08

Model: Sport Fisherman

Price: PRICE ON APPLICATION

Location: United States

Our experienced yacht broker, Andrey Shestakov, will help you choose and buy a yacht that best suits your needs **Clare's Escape — VIKING** from our catalogue. Presently, at Shestakov Yacht Sales Inc., we have a wide variety of yachts available on our sale's list. We also work in close contact with all the big yacht manufacturers from all over the world.

If you would like to buy a yacht **Clare's Escape — VIKING** or would like help answering any questions concerning purchasing, selling or chartering a yacht, please call **+1(954)274-4435**

TABLE OF CONTENTS

TABLE OF CONTENTS	2
SPECIFICATIONS	5
Overview	5
Basic Information	5
Dimensions	5
Speed, Capacities and Weight	5
Accommodations	5
Hull and Deck Information	5
Engine Information	6
PHOTOS	7
2	7
3	7
4	7
5	7
6	7
7	7
8	8
9	8
10	8
11	8
12	8
13	8
14	9
15	9
16	9
17	9
18	9
19	9

20	10
21	10
22	10
23	10
24	10
25	10
26	11
27	11
28	11
29	11
30	11
31	11
32	12
33	12
34	12
35	12
36	12
37	12
38	13
39	13
40	13
41	13
42	13
43	13
44	14
45	14
46	14
47	14
48	14

49	14
50	15
51	15
52	15
53	15
54	15
55	15
CONTACTS	16
Contact details	16
Telephones	16
Office hours	16
Address	16

SPECIFICATIONS

Overview

One of the best maintained boats in the area. There is a partial list below here and in the details section on some of the upgrades. All the canvas and vinyl on the bridge is new and very high-end. The top has a custom extension that goes all the way to the back of the arch, which is drier with rain blowing from the rear. The cockpit canvas is new as well. Check out the photos and details. Call for an appointment. This boat is only shown by 24 hour advanced notice. You want to see this one. You will NOT be disappointed.

Basic Information

Category: Sport Fisherman

Model Year: 1985

Year Built: 1985

Country: United States

Dimensions

LOA: 35' (10.67m)

Beam: 13.08

Speed, Capacities and Weight

Gross Tonnage: 20000 Pounds

Water Capacity: 110 Gallons

Holding Tank: 35 Gal Gallons

Fuel Capacity: 300 Gal Gallons

Accommodations

Total Cabins: 1

Total Heads: 1

Hull and Deck Information

Hull Material: Fiberglass

Engine Information

Engines: 2

Manufacturer: Cummins

Engine Type: Inboard

Fuel Type: Diesel

PHOTOS

2



3



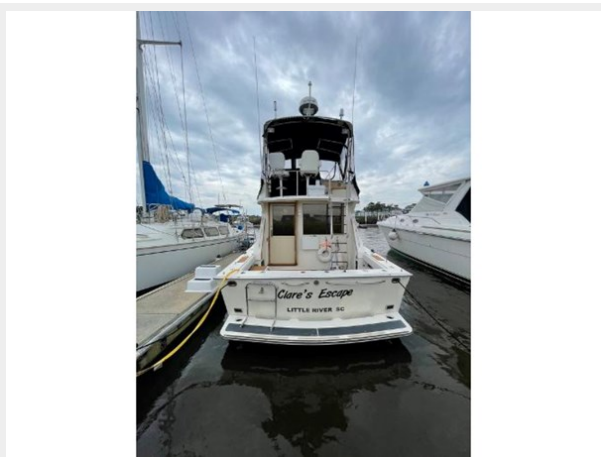
4



5



6



7



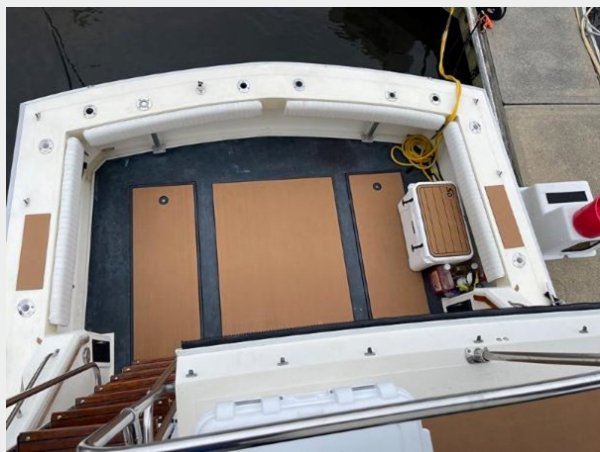
8



9



10



11



12



13



14



15



16



17



18



19



20



21



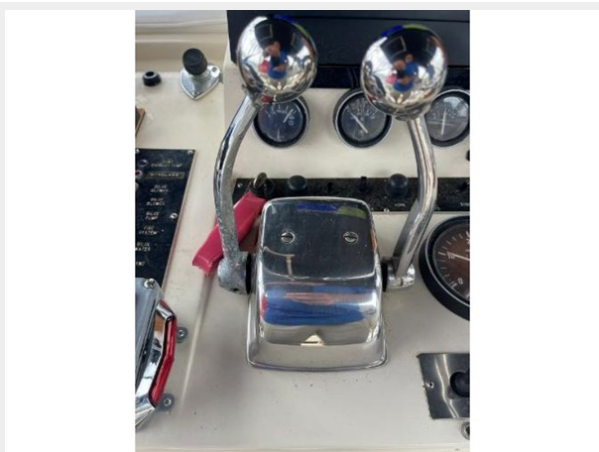
22



23



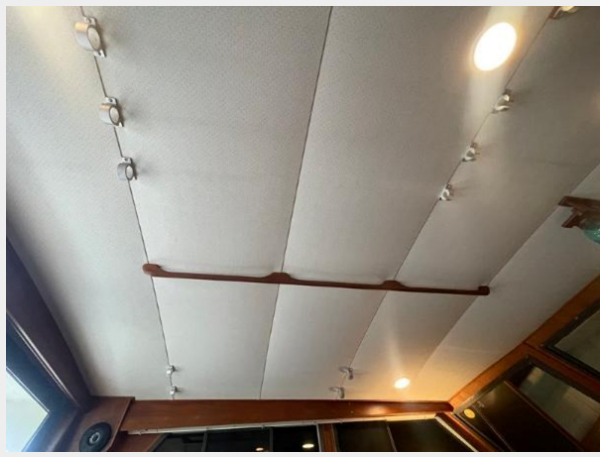
24



25



26



27



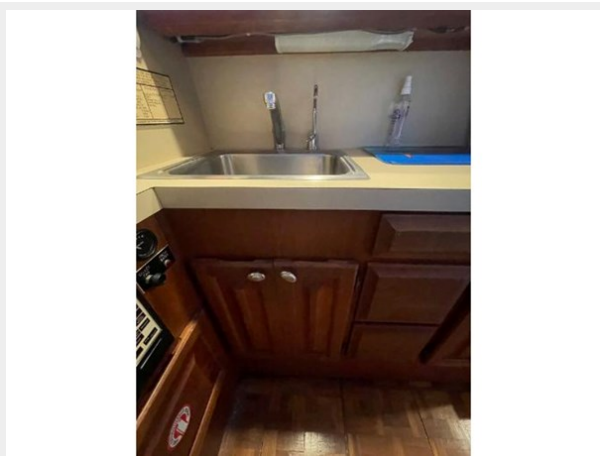
28



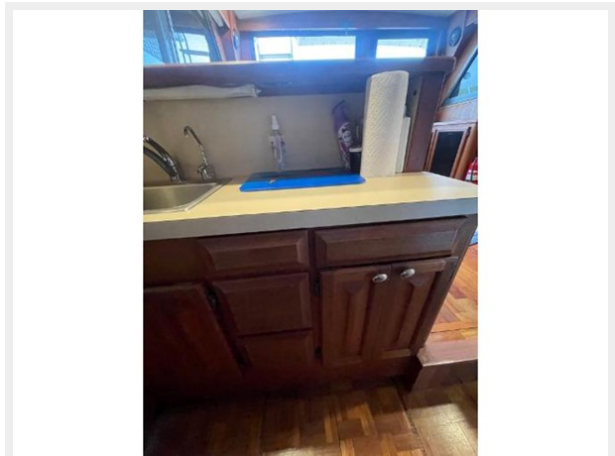
29



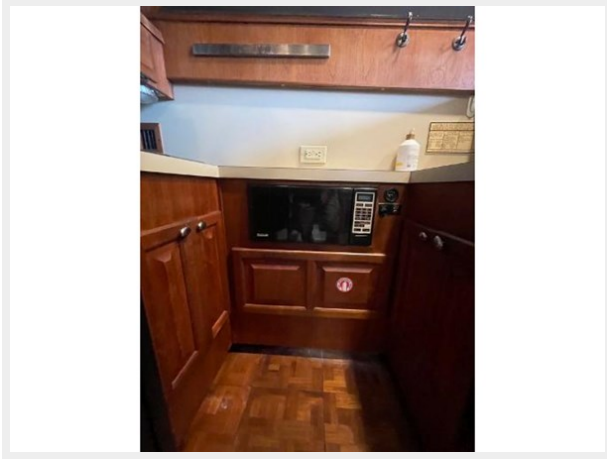
30



31



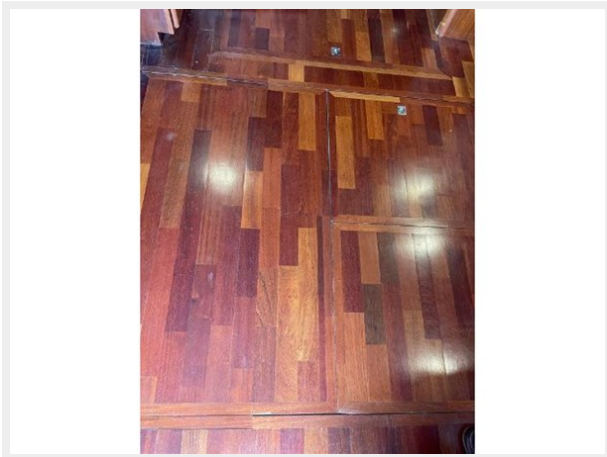
32



33



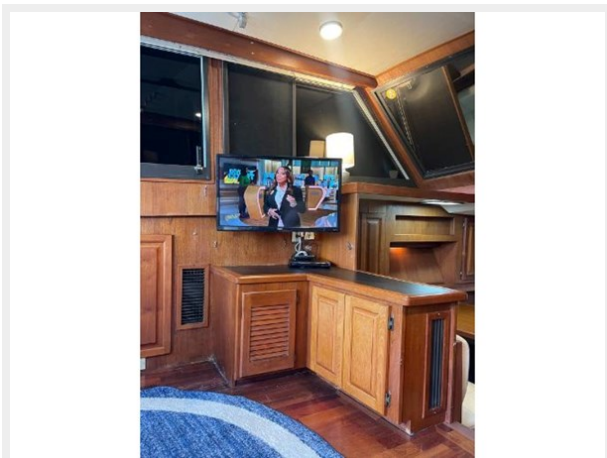
34



35



36



37



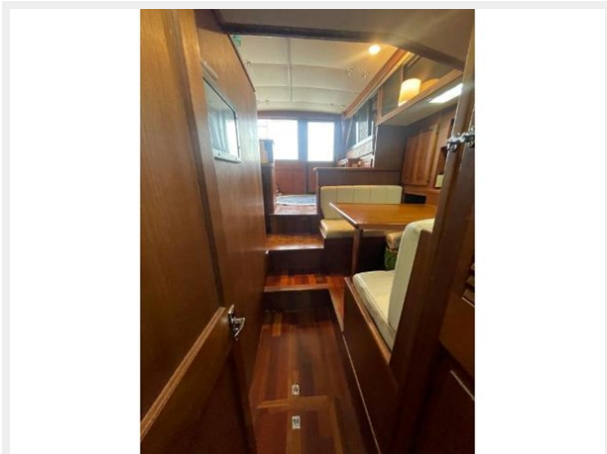
38



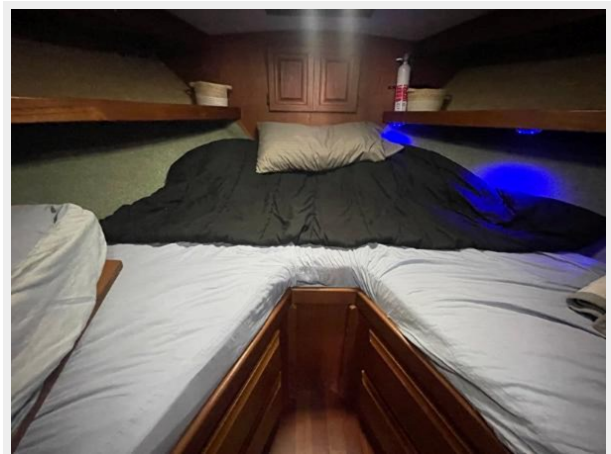
39



40



41



42



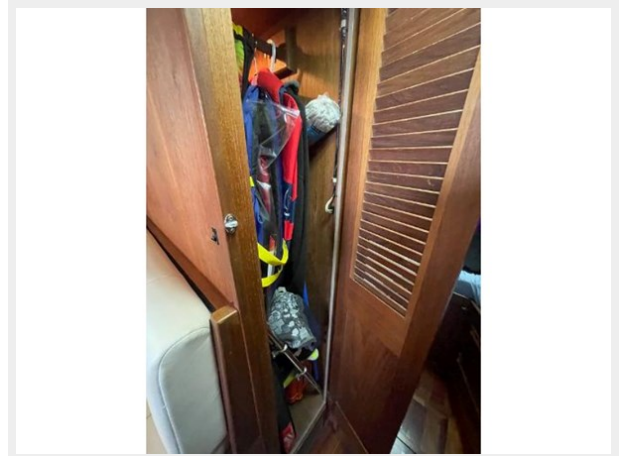
43



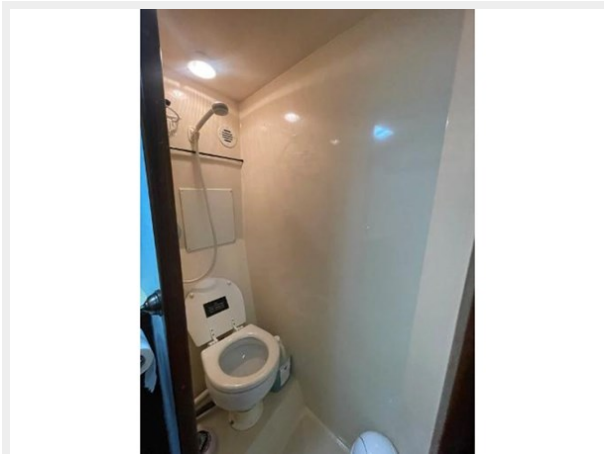
44



45



46



47



48



49



50



51



52



53



54



55



CONTACTS

Andrey Shestakov, leading yacht broker of the sales department of Shestakov Yacht Sales Inc. Shestakov Yacht Sales Inc., the official representative of the Miami/Fort Lauderdale FL headquarters.

Contact details

Email: andrey@shestakovyachtsales.com

Web: shestakovyachtsales.com/en/

Telephones

USA: +1(954)274-4435

Office hours

Monday – Saturday: **9:00 - 21:00** EDT

Sunday: **closed**

Address



Harbour Towne Marina, 850 NE 3rd St,
STE 213, Dania, FL 33004