

IMAGINE — RIVIERA



Builder: RIVIERA

Year Built: 2013

Model: Aft Cabin

Price: \$675,000 USD

Location: United States

LOA: 50' (15.24mm)

Beam: 15.58

Max Draft: 3' 11" (1.19mm)

Our experienced yacht broker, Andrey Shestakov, will help you choose and buy a yacht that best suits your needs **IMAGINE — RIVIERA** from our catalogue. Presently, at Shestakov Yacht Sales Inc., we have a wide variety of yachts available on our sale's list. We also work in close contact with all the big yacht manufacturers from all over the world.

If you would like to buy a yacht **IMAGINE — RIVIERA** or would like help answering any questions concerning purchasing, selling or chartering a yacht, please call **+1(954)274-4435**

TABLE OF CONTENTS

TABLE OF CONTENTS	2
SPECIFICATIONS	4
Overview	4
Basic Information	4
Dimensions	5
Speed, Capacities and Weight	5
Accommodations	5
Hull and Deck Information	5
Engine Information	5
PHOTOS	6
Riviera -14	6
Riviera -15	6
Riviera -16	6
Riviera -17	6
Riviera -18	6
Riviera -19	6
Riviera -20	7
Main	7
main 3	7
main 2	7
Riviera -11	8
Riviera -12	8
Riviera -13	9
Riviera -02	15
Riviera -01	16
Riviera -04	16
Riviera -05	16
Riviera -03	16

Riviera -06	17
Riviera -07	17
Riviera -08	17
Riviera -09	17
Riviera -10	18
CONTACTS	21
Contact details	21
Telephones	21
Office hours	21
Address	21

SPECIFICATIONS

Overview

This is a fantastic opportunity. Riviera Sport Yacht is custom built with a groundbreaking layout providing one-level living complemented by an expansive lower lounge as well, she also features a tender garage, hydraulic swim platform, and so much more.

April 2022 major engine, pod, and generator services. Invoices for excess of 30k for services completed. Impressive boat to run.

Recent Major Updates:

- NEW 16 inch Garmin screens
- DOCKMATE INSTALLED
- ALL AIR UNITS HAVE BEEN REPLACED / ALL NEW 3 units air conditioning
- NEW Upholstery Salon Couches
- All new soft goods / Canvas
- New Garage actuator
- New Sunroof motor and seals
- New Refrigerator
- New Bilge pumps
- Fresh Bottom Paint
- Upgraded Anchor
- New Ice Maker

Major detailing; This 2013 Riviera is a must see and ride.

Basic Information

Category: Aft Cabin

Sub Category: Aft Cabin

Model Year: 2013

Year Built: 2013

Country: United States

Dimensions

LOA: 50' (15.24mm)

Beam: 15.58

Max Draft: 3' 11" (1.19mm)

Speed, Capacities and Weight

Water Capacity: 198 Gallons

Holding Tank: 40 Gal Gallons

Fuel Capacity: 308 Gal Gallons

Accommodations

Total Cabins: 2

Total Berths: 2

Hull and Deck Information

Hull Material: Fiberglass

Engine Information

Engines: 2

Manufacturer: Cummins

Engine Type: Inboard

Fuel Type: Diesel

PHOTOS

Riviera -14



Riviera -15



Riviera -16



Riviera -17



Riviera -18



Riviera -19



Riviera -20



Main

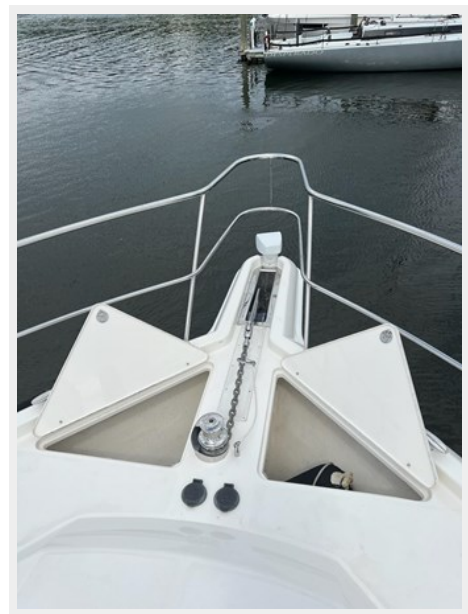


main 2



main 3





Riviera -11

Riviera -12

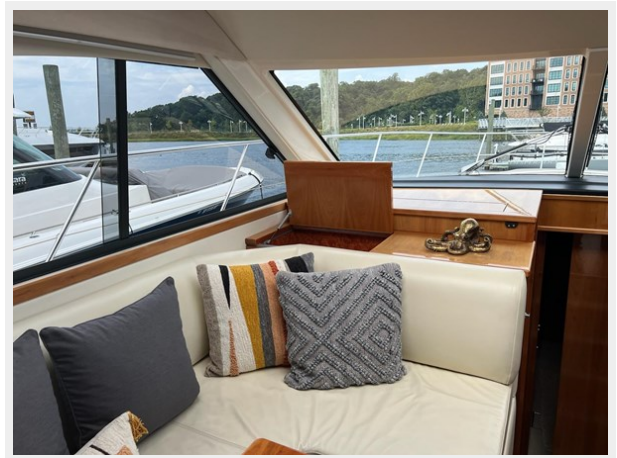




Riviera -13















Riviera -02



Riviera -01



Riviera -04



Riviera -05



Riviera -03



Riviera -06



Riviera -07



Riviera -08

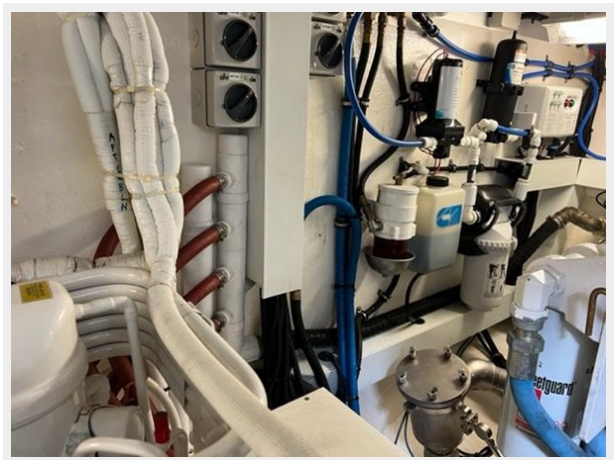
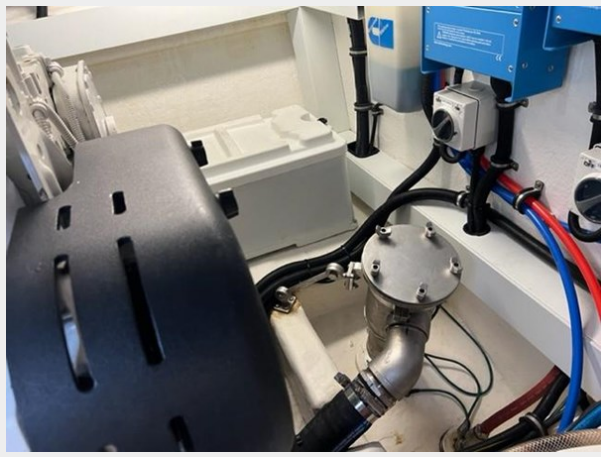


Riviera -09



Riviera -10







CONTACTS

Andrey Shestakov, leading yacht broker of the sales department of Shestakov Yacht Sales Inc. Shestakov Yacht Sales Inc., the official representative of the Miami/Fort Lauderdale FL headquarters.

Contact details

Email: andrey@shestakovyachtsales.com

Web: shestakovyachtsales.com/en/

Telephones

USA: +1(954)274-4435

Office hours

Monday – Saturday: **9:00 - 21:00** EDT

Sunday: **closed**

Address



Harbour Towne Marina, 850 NE 3rd St,
STE 213, Dania, FL 33004