

## GYPSY DAZUR — TRUMPY



**Builder:** TRUMPY

**LOA:** 55' (16.76mm)

**Year Built:** 1956

**Beam:** 13.83

**Model:** trawler

**Max Draft:** 4' 6" (1.37mm)

**Price:** PRICE ON APPLICATION

**Location:** United States

Our experienced yacht broker, Andrey Shestakov, will help you choose and buy a yacht that best suits your needs **Gypsy dAzur — TRUMPY** from our catalogue. Presently, at Shestakov Yacht Sales Inc., we have a wide variety of yachts available on our sale's list. We also work in close contact with all the big yacht manufacturers from all over the world.

If you would like to buy a yacht **Gypsy dAzur — TRUMPY** or would like help answering any questions concerning purchasing, selling or chartering a yacht, please call **+1(954)274-4435**

# TABLE OF CONTENTS

---

TABLE OF CONTENTS	2
SPECIFICATIONS	6
Overview	6
Basic Information	6
Dimensions	6
Speed, Capacities and Weight	6
Accommodations	7
Hull and Deck Information	7
Engine Information	7
PHOTOS	8
8467030_20220831120851196_1_XLARGE	8
8467030_20220831083416014_1_XLARGE	8
8467030_20220901100157231_1_XLARGE	8
8467030_20220912113814845_1_XLARGE	8
8467030_20220912113817528_1_XLARGE	9
8467030_20220831083406458_1_XLARGE	9
8467030_20220901100150375_1_XLARGE	9
8467030_20220831083356434_1_XLARGE	9
8467030_20220912113733046_1_XLARGE	10
8467030_20220831080557712_1_XLARGE	10
8467030_20220901100119805_1_XLARGE	10
8467030_20220901043632465_1_XLARGE	10
8467030_20220912113641775_1_XLARGE	10
8467030_20220912113713336_1_XLARGE	10
8467030_20220831074756594_1_XLARGE	11
8467030_20220901040100224_1_XLARGE	11
8467030_20220901100126041_1_XLARGE	11
8467030_20220901040040383_1_XLARGE	11

---

8467030_20220831074220700_1_XLARGE	11
8467030_20220901043624800_1_XLARGE	11
8467030_20220831074804384_1_XLARGE	12
8467030_20220831074229718_1_XLARGE	12
8467030_20220831074238723_1_XLARGE	12
8467030_20220831074345860_1_XLARGE	12
8467030_20220831074748541_1_XLARGE	12
8467030_20220831074830573_1_XLARGE	12
8467030_20220912113627300_1_XLARGE	13
8467030_20220831074954837_1_XLARGE	13
8467030_20220901100209156_1_XLARGE	13
8467030_20220912113632995_1_XLARGE	13
8467030_20220831080549250_1_XLARGE	13
8467030_20220831080714632_1_XLARGE	13
8467030_20220831080950664_1_XLARGE	14
8467030_20220912113715978_1_XLARGE	14
8467030_20220831081000694_1_XLARGE	14
8467030_20220831081012933_1_XLARGE	14
8467030_20220831082021747_1_XLARGE	14
8467030_20220831081024125_1_XLARGE	14
8467030_20220912120514065_1_XLARGE	15
8467030_20220912113739063_1_XLARGE	15
8467030_20220912113745222_1_XLARGE	15
8467030_20220912113751488_1_XLARGE	15
8467030_20220912113756950_1_XLARGE	16
8467030_20220831080635892_1_XLARGE	16
8467030_20220912113807695_1_XLARGE	16
8467030_20220912113647831_1_XLARGE	16
8467030_20220912113646798_1_XLARGE	17

---

8467030_20220912113645192_1_XLARGE	17
8467030_20220912113802514_1_XLARGE	17
8467030_20220912113650785_1_XLARGE	17
8467030_20220912113656067_1_XLARGE	18
8467030_20220912113700990_1_XLARGE	18
8467030_20220831081043408_1_XLARGE	18
8467030_20220831081052092_1_XLARGE	18
8467030_20220831081102180_1_XLARGE	18
8467030_20220831081952388_1_XLARGE	18
8467030_20220912113811659_1_XLARGE	19
8467030_20220831082011965_1_XLARGE	19
8467030_20220901043639941_1_XLARGE	19
8467030_20220901100055322_1_XLARGE	19
8467030_20220901100101223_1_XLARGE	20
8467030_20220901100058087_1_XLARGE	20
8467030_20220901100108108_1_XLARGE	20
8467030_20220901100112330_1_XLARGE	20
8467030_20220901100135495_1_XLARGE	21
8467030_20220901100235972_1_XLARGE	21
8467030_20220901100202983_1_XLARGE	21
8467030_20220901100214800_1_XLARGE	21
8467030_20220912113636864_1_XLARGE	22
8467030_20220912113709650_1_XLARGE	22
8467030_20220912113719509_1_XLARGE	22
8467030_20220912113704967_1_XLARGE	22
8467030_20220912113723618_1_XLARGE	22
8467030_20220901040055332_1_XLARGE	22
8467030_20220901100225269_1_XLARGE	23
8467030_20220901040046033_1_XLARGE	23

---

8467030_20220901100220358_1_XLARGE	23
8467030_20220901100230568_1_XLARGE	23
8467030_20220901040050847_1_XLARGE	24
8467030_20220901100104214_1_XLARGE	24
CONTACTS	25
Contact details	25
Telephones	25
Office hours	25
Address	25

---

# SPECIFICATIONS

---

## Overview

---

Entertain and cruise in classic style!!

Took a nostalgic ride down 'Memory Lane', (actually the St. Johns River) on 8/30/22.

If you can't handle having everyone on the docks and other boats staring at you, don't buy this one!! She's a real 'head turner'.

Featured in Millionaire Magazine in 1997. Registered as an antique vessel in Florida.

Bottom has been fiberglassed!!

Master Stateroom aft with queen berth. Crew quarters forward with separate head and shower.

Please call or email for private viewing.

## Basic Information

---

**Category:** trawler

**Sub Category:** Pilothouse

**Model Year:** 1956

**Year Built:** 1956

**Country:** United States

## Dimensions

---

**LOA:** 55' (16.76mm)

**Beam:** 13.83

**Max Draft:** 4' 6" (1.37mm)

## Speed, Capacities and Weight

---

**Water Capacity:** 150 Gallons

**Holding Tank:** 60 Gal Gallons

**Fuel Capacity:** 500 Gal Gallons

---

## Accommodations

---

**Total Cabins:** 4

---

## Hull and Deck Information

---

**Hull Material:** Wood

---

## Engine Information

---

**Engines:** 2

**Manufacturer:** Detroit Diesel

**Engine Type:** Inboard

**Fuel Type:** Diesel

# PHOTOS

8467030\_20220831120851196\_1\_XLARGE



8467030\_20220831083416014\_1\_XLARGE



8467030\_20220901100157231\_1\_XLARGE

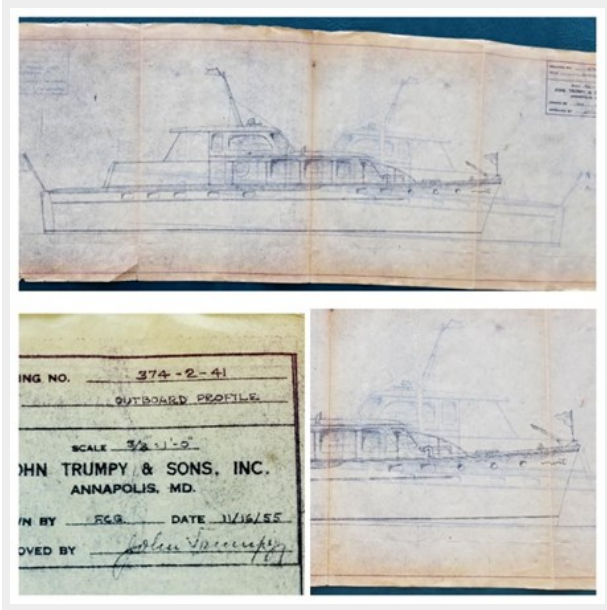


8467030\_20220912113814845\_1\_XLARGE





8467030\_20220912113817528\_1\_XLARGE



8467030\_20220831083406458\_1\_XLARGE



8467030\_20220831083356434\_1\_XLARGE



8467030\_20220901100150375\_1\_XLARGE



8467030\_20220912113733046\_1\_XLARGE



8467030\_20220831080557712\_1\_XLARGE



8467030\_20220901100119805\_1\_XLARGE

8467030\_20220901043632465\_1\_XLARGE



8467030\_20220912113641775\_1\_XLARGE

8467030\_20220912113713336\_1\_XLARGE





8467030\_20220831074756594\_1\_XLARGE



8467030\_20220901040100224\_1\_XLARGE



8467030\_20220901100126041\_1\_XLARGE



8467030\_20220901040040383\_1\_XLARGE



8467030\_20220901043624800\_1\_XLARGE



8467030\_20220831074220700\_1\_XLARGE



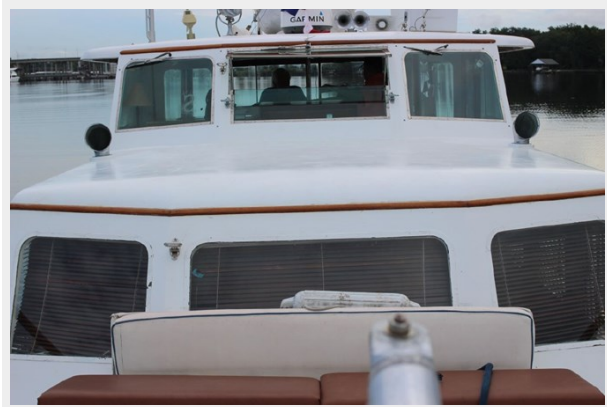
8467030\_20220831074804384\_1\_XLARGE



8467030\_20220831074229718\_1\_XLARGE



8467030\_20220831074238723\_1\_XLARGE



8467030\_20220831074345860\_1\_XLARGE



8467030\_20220831074748541\_1\_XLARGE



8467030\_20220831074830573\_1\_XLARGE





8467030\_20220831074954837\_1\_XLARGE

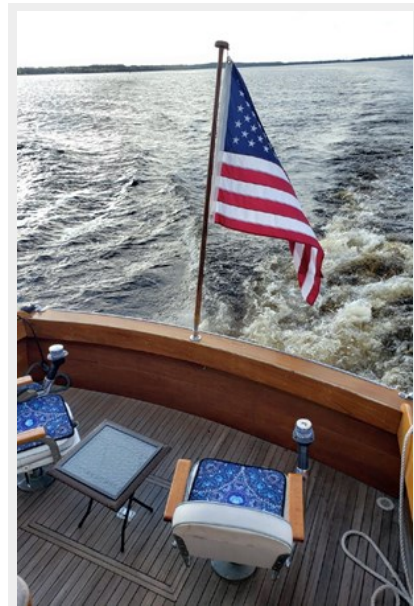


8467030\_20220912113627300\_1\_XLARGE

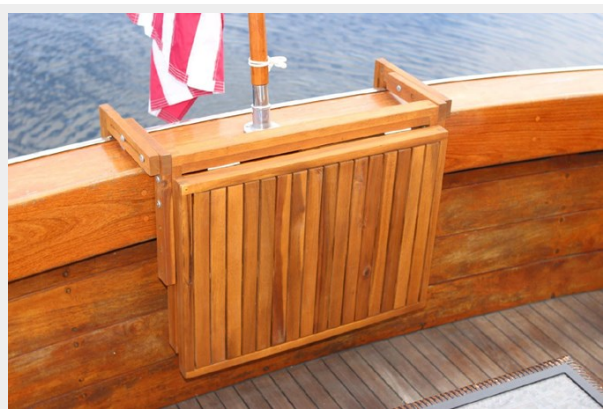


8467030\_20220901100209156\_1\_XLARGE

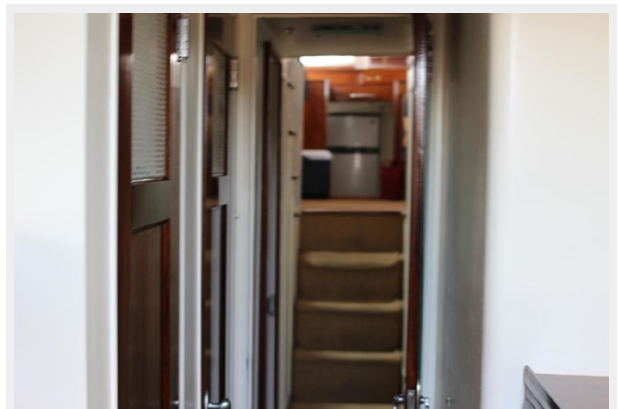
8467030\_20220912113632995\_1\_XLARGE



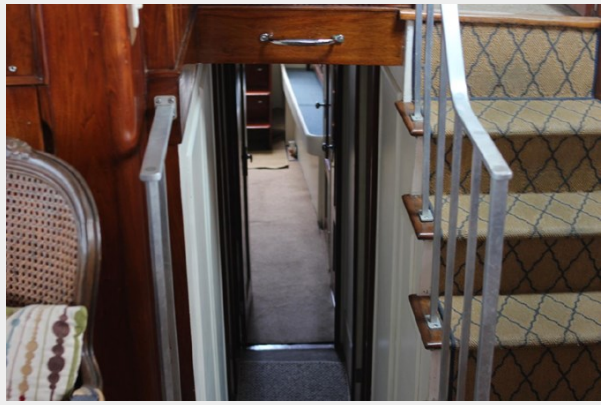
8467030\_20220831080549250\_1\_XLARGE



8467030\_20220831080714632\_1\_XLARGE



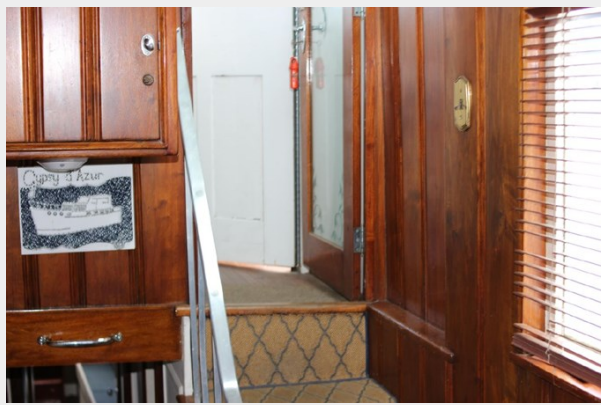
8467030\_20220831080950664\_1\_XLARGE



8467030\_20220912113715978\_1\_XLARGE



8467030\_20220831081000694\_1\_XLARGE



8467030\_20220831081012933\_1\_XLARGE



8467030\_20220831082021747\_1\_XLARGE



8467030\_20220831081024125\_1\_XLARGE





8467030\_20220912120514065\_1\_XLARGE



8467030\_20220912113739063\_1\_XLARGE



8467030\_20220912113745222\_1\_XLARGE



8467030\_20220912113751488\_1\_XLARGE



8467030\_20220912113756950\_1\_XLARGE



8467030\_20220831080635892\_1\_XLARGE



8467030\_20220912113807695\_1\_XLARGE



8467030\_20220912113647831\_1\_XLARGE





8467030\_20220912113646798\_1\_XLARGE

8467030\_20220912113645192\_1\_XLARGE



8467030\_20220912113802514\_1\_XLARGE

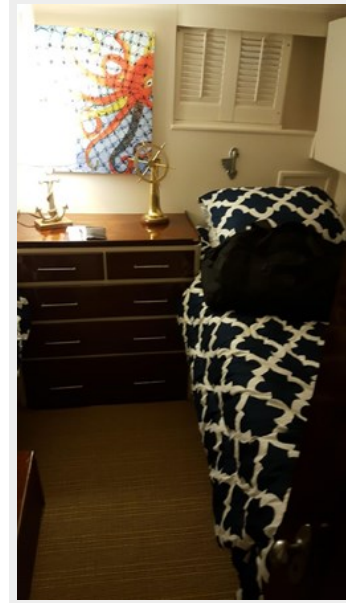
8467030\_20220912113650785\_1\_XLARGE



8467030\_20220912113656067\_1\_XLARGE



8467030\_20220912113700990\_1\_XLARGE



8467030\_20220831081043408\_1\_XLARGE



8467030\_20220831081052092\_1\_XLARGE



8467030\_20220831081102180\_1\_XLARGE

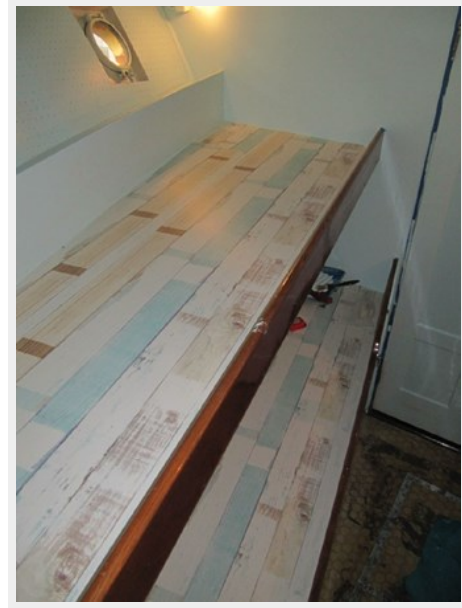


8467030\_20220831081952388\_1\_XLARGE





8467030\_20220912113811659\_1\_XLARGE



8467030\_20220831082011965\_1\_XLARGE



8467030\_20220901043639941\_1\_XLARGE



8467030\_20220901100055322\_1\_XLARGE



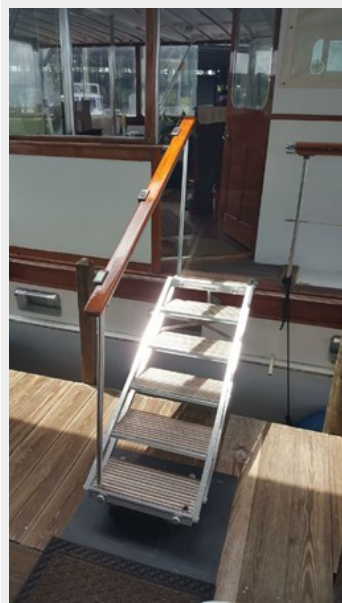
8467030\_20220901100101223\_1\_XLARGE



8467030\_20220901100058087\_1\_XLARGE



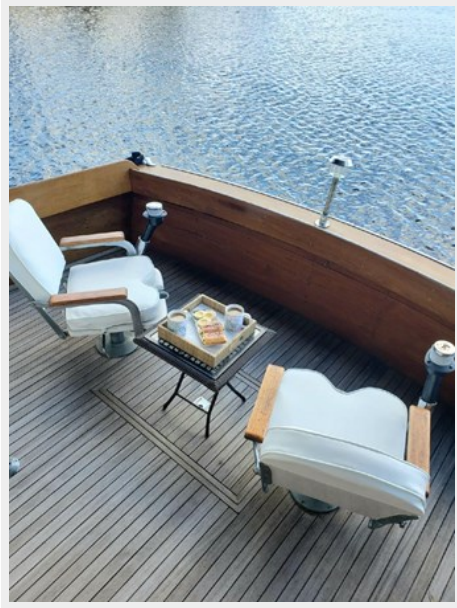
8467030\_20220901100108108\_1\_XLARGE



8467030\_20220901100112330\_1\_XLARGE



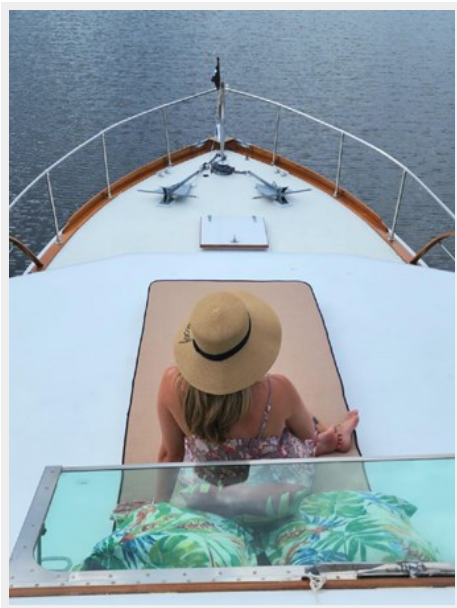
8467030\_20220901100135495\_1\_XLARGE



8467030\_20220901100235972\_1\_XLARGE



8467030\_20220901100202983\_1\_XLARGE



8467030\_20220901100214800\_1\_XLARGE





8467030\_20220912113636864\_1\_XLARGE



8467030\_20220912113709650\_1\_XLARGE



8467030\_20220912113704967\_1\_XLARGE



8467030\_20220912113719509\_1\_XLARGE



8467030\_20220912113723618\_1\_XLARGE



8467030\_2022091040055332\_1\_XLARGE



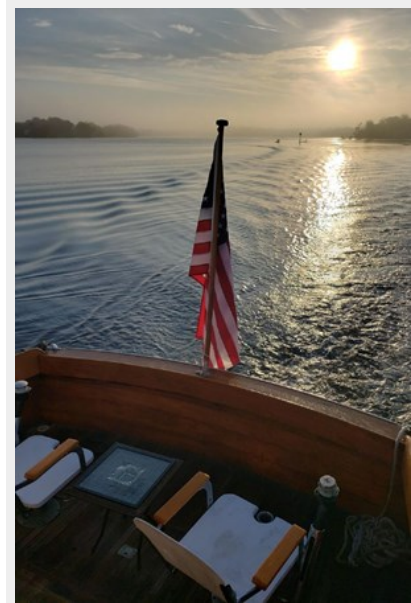
8467030\_20220901100225269\_1\_XLARGE

8467030\_20220901040046033\_1\_XLARGE



8467030\_20220901100220358\_1\_XLARGE

8467030\_20220901100230568\_1\_XLARGE



8467030\_20220901040050847\_1\_XLARGE



8467030\_20220901100104214\_1\_XLARGE





# CONTACTS

---

Andrey Shestakov, leading yacht broker of the sales department of Shestakov Yacht Sales Inc. Shestakov Yacht Sales Inc., the official representative of the Miami/Fort Lauderdale FL headquarters.

## Contact details

---

Email: [andrey@shestakovyachtsales.com](mailto:andrey@shestakovyachtsales.com)

Web: [shestakovyachtsales.com/en/](http://shestakovyachtsales.com/en/)

## Telephones

---

USA: +1(954)274-4435

## Office hours

---

Monday – Saturday: **9:00 - 21:00** EDT

Sunday: **closed**

## Address

---



Harbour Towne Marina, 850 NE 3rd St,  
STE 213, Dania, FL 33004