

SEA DOG — MAINSHIP



Builder: MAINSHIP

LOA: 34' (10.36mm)

Year Built: 2000

Beam: 12.25

Model: Cruising Yacht

Max Draft: 3' 3" (0.99mm)

Price: PRICE ON APPLICATION

Location: United States

Our experienced yacht broker, Andrey Shestakov, will help you choose and buy a yacht that best suits your needs **Sea Dog — MAINSHIP** from our catalogue. Presently, at Shestakov Yacht Sales Inc., we have a wide variety of yachts available on our sale's list. We also work in close contact with all the big yacht manufacturers from all over the world.

If you would like to buy a yacht **Sea Dog — MAINSHIP** or would like help answering any questions concerning purchasing, selling or chartering a yacht, please call **+1(954)274-4435**

TABLE OF CONTENTS

TABLE OF CONTENTS	2
SPECIFICATIONS	5
Overview	5
Basic Information	5
Dimensions	5
Speed, Capacities and Weight	5
Accommodations	5
Hull and Deck Information	6
Engine Information	6
PHOTOS	7
8474775_20220901073719642_1_XLARGE	7
8474775_20220901073800012_1_XLARGE	7
8474775_20220901073920624_1_XLARGE	7
8474775_20220901073944247_1_XLARGE	7
8474775_20220901073820167_1_XLARGE	8
8474775_20220901073741935_1_XLARGE	8
8474775_20220901073834115_1_XLARGE	8
8474775_20220901073839950_1_XLARGE	8
8474775_20220901073850698_1_XLARGE	9
8474775_20220901073856072_1_XLARGE	9
8474775_20220901073915103_1_XLARGE	9
8474775_20220901073901435_1_XLARGE	9
8474775_20220901073949376_1_XLARGE	10
8474775_20220901074008434_1_XLARGE	10
8474775_20220901074020619_1_XLARGE	10
8474775_20220901074003148_1_XLARGE	10
8474775_20220901074013528_1_XLARGE	10
8474775_20220901074033998_1_XLARGE	10

8474775_20220901074402690_1_XLARGE	11
8474775_20220901074413621_1_XLARGE	11
8474775_20220901074148449_1_XLARGE	11
8474775_20220901074259123_1_XLARGE	11
8474775_20220901074253535_1_XLARGE	11
8474775_20220901074049079_1_XLARGE	11
8474775_20220901074427891_1_XLARGE	12
8474775_20220901074107645_1_XLARGE	12
8474775_20220901074134467_1_XLARGE	12
8474775_20220901074120852_1_XLARGE	12
8474775_20220901074353078_1_XLARGE	12
8474775_20220901074343524_1_XLARGE	12
8474775_20220901074327745_1_XLARGE	13
8474775_20220901074231518_1_XLARGE	13
8474775_20220901074247826_1_XLARGE	13
8474775_20220901074202223_1_XLARGE	13
8474775_20220901074215791_1_XLARGE	13
8474775_20220901074501717_1_XLARGE	13
8474775_20220901074438144_1_XLARGE	14
8474775_20220901074450221_1_XLARGE	14
8474775_20220901074554563_1_XLARGE	14
8474775_20220901074515215_1_XLARGE	14
8474775_20220901074540759_1_XLARGE	14
8474775_20220901074527423_1_XLARGE	14
8474775_20220901074610808_1_XLARGE	15
8474775_20220901074508622_1_XLARGE	15
8474775_20220901074312755_1_XLARGE	15
8474775_20220901074848668_1_XLARGE	15
8474775_20220901074747067_1_XLARGE	15

8474775_20220901074707595_1_XLARGE	15
8474775_20220901074731734_1_XLARGE	16
8474775_20220901074624750_1_XLARGE	16
8474775_20220901074653690_1_XLARGE	16
8474775_20220901074815903_1_XLARGE	16
8474775_20220901074639123_1_XLARGE	16
8474775_20220901074802325_1_XLARGE	16
8474775_20220901074827179_1_XLARGE	17
8474775_20220901074919374_1_XLARGE	17
8474775_20220901074906578_1_XLARGE	17
CONTACTS	18
Contact details	18
Telephones	18
Office hours	18
Address	18

SPECIFICATIONS

Overview

2000 34' Mainship Pilot with Custom Rigid Top

Yanmar 350HP Diesel only 1455 Hours, Phasor 4.5kW Generator, 4212 Garmin GPS/Chart/Radar, Bow and Stern Thrusters, Simrad Auto Pilot AP22, VacuFlush Head, Flat Screen TV, Teak Inlay in Forward Cabin, Halon System, Oil Change System, Windlass.

This is a Very Nice Vessel

Basic Information

Category: Cruising Yacht

Sub Category: Downeast

Model Year: 2000

Year Built: 2000

Country: United States

Dimensions

LOA: 34' (10.36mm)

Beam: 12.25

Max Draft: 3' 3" (0.99mm)

Speed, Capacities and Weight

Water Capacity: 70 Gallons

Holding Tank: 20 Gal Gallons

Fuel Capacity: 250 Gal Gallons

Accommodations

Total Cabins: 1

Hull and Deck Information

Hull Material: Fiberglass

Engine Information

Engines: 1

Manufacturer: Yanmar

Engine Type: Inboard

Fuel Type: Diesel

PHOTOS

8474775_20220901073719642_1_XLARGE



8474775_20220901073800012_1_XLARGE



8474775_20220901073920624_1_XLARGE



8474775_20220901073944247_1_XLARGE



8474775_20220901073820167_1_XLARGE



8474775_20220901073741935_1_XLARGE



8474775_20220901073834115_1_XLARGE



8474775_20220901073839950_1_XLARGE



8474775_20220901073850698_1_XLARGE



8474775_20220901073856072_1_XLARGE



8474775_20220901073915103_1_XLARGE

8474775_20220901073901435_1_XLARGE



8474775_20220901073949376_1_XLARGE



8474775_20220901074008434_1_XLARGE



8474775_20220901074020619_1_XLARGE



8474775_20220901074003148_1_XLARGE



8474775_20220901074013528_1_XLARGE



8474775_20220901074033998_1_XLARGE



8474775_20220901074402690_1_XLARGE



8474775_20220901074413621_1_XLARGE



8474775_20220901074148449_1_XLARGE



8474775_20220901074259123_1_XLARGE



8474775_20220901074253535_1_XLARGE



8474775_20220901074049079_1_XLARGE



8474775_20220901074427891_1_XLARGE



8474775_20220901074107645_1_XLARGE



8474775_20220901074134467_1_XLARGE



8474775_20220901074120852_1_XLARGE



8474775_20220901074353078_1_XLARGE

8474775_20220901074343524_1_XLARGE



8474775_20220901074327745_1_XLARGE



8474775_20220901074231518_1_XLARGE



8474775_20220901074247826_1_XLARGE



8474775_20220901074202223_1_XLARGE



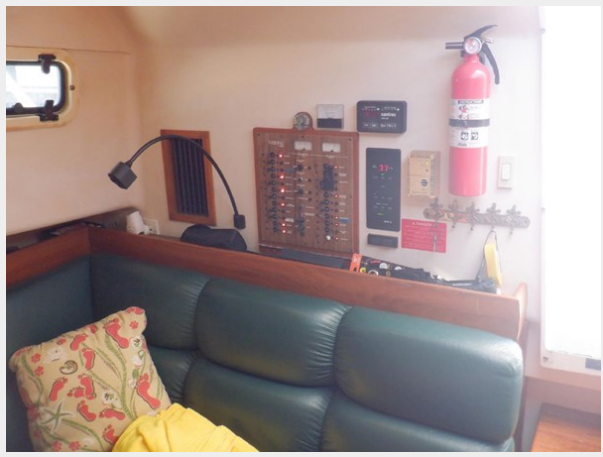
8474775_20220901074215791_1_XLARGE



8474775_20220901074501717_1_XLARGE



8474775_20220901074438144_1_XLARGE



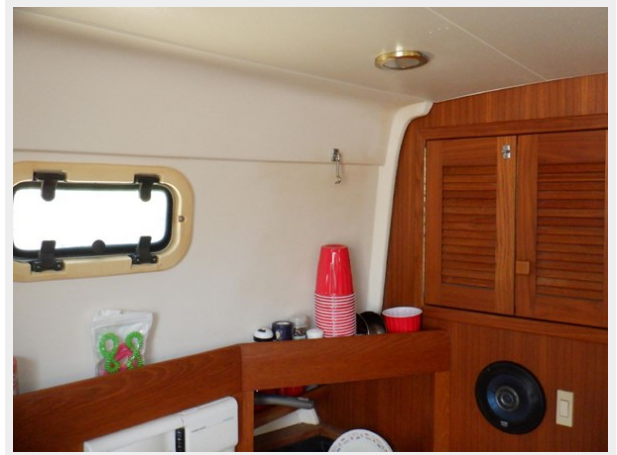
8474775_20220901074450221_1_XLARGE



8474775_20220901074554563_1_XLARGE



8474775_20220901074515215_1_XLARGE



8474775_20220901074540759_1_XLARGE

8474775_20220901074527423_1_XLARGE



8474775_20220901074610808_1_XLARGE

8474775_20220901074508622_1_XLARGE



8474775_20220901074312755_1_XLARGE

8474775_20220901074848668_1_XLARGE



8474775_20220901074747067_1_XLARGE

8474775_20220901074707595_1_XLARGE



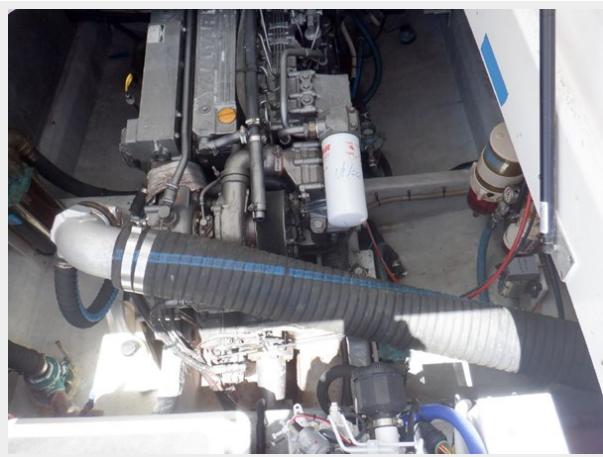
8474775_20220901074731734_1_XLARGE



8474775_20220901074624750_1_XLARGE



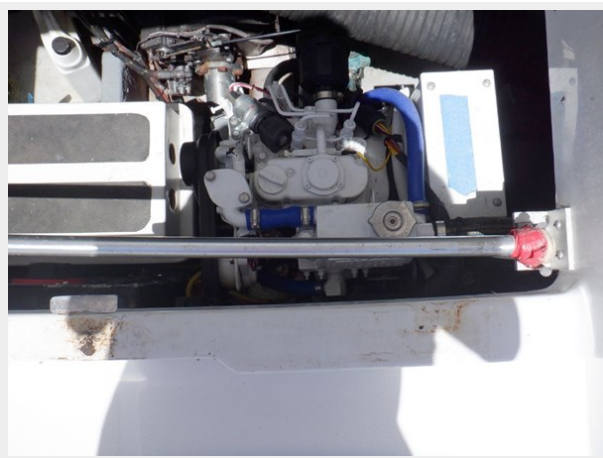
8474775_20220901074653690_1_XLARGE



8474775_20220901074815903_1_XLARGE



8474775_20220901074639123_1_XLARGE

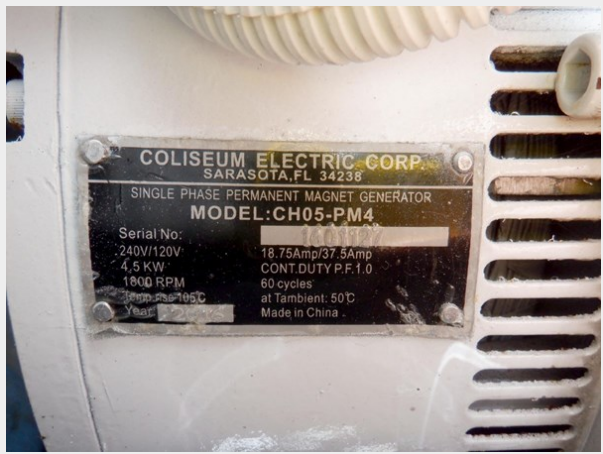


8474775_20220901074802325_1_XLARGE

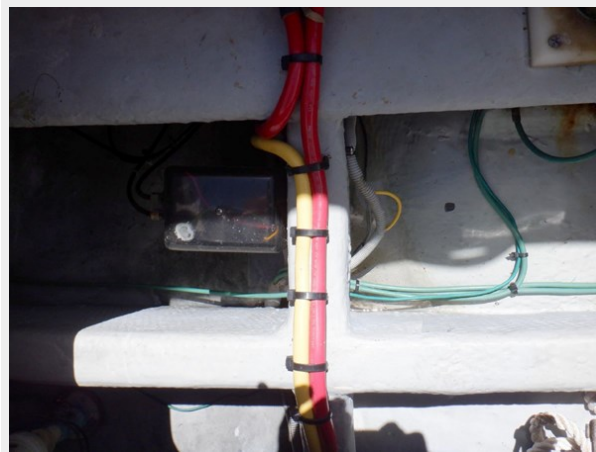


8474775_20220901074827179_1_XLARGE

8474775_20220901074919374_1_XLARGE



8474775_20220901074906578_1_XLARGE



CONTACTS

Andrey Shestakov, leading yacht broker of the sales department of Shestakov Yacht Sales Inc. Shestakov Yacht Sales Inc., the official representative of the Miami/Fort Lauderdale FL headquarters.

Contact details

Email: andrey@shestakovyachtsales.com

Web: shestakovyachtsales.com/en/

Telephones

USA: +1(954)274-4435

Office hours

Monday – Saturday: **9:00 - 21:00** EDT

Sunday: **closed**

Address



Harbour Towne Marina, 850 NE 3rd St,
STE 213, Dania, FL 33004