

## GATSBY — HINCKLEY



**Builder:** HINCKLEY

**Year Built:** 2001

**Model:** Boats

**Price:** PRICE ON APPLICATION

**Location:** United States

**LOA:** 36' (10.97mm)

**Beam:** 10

**Min Draft:** 1' 6" (0.46mm)

**Max Draft:** 2' (0.61mm)

**Max Speed:** 27 Knots Kts. (31 MPH)

Our experienced yacht broker, Andrey Shestakov, will help you choose and buy a yacht that best suits your needs **GATSBY — HINCKLEY** from our catalogue. Presently, at Shestakov Yacht Sales Inc., we have a wide variety of yachts available on our sale's list. We also work in close contact with all the big yacht manufacturers from all over the world.

If you would like to buy a yacht **GATSBY — HINCKLEY** or would like help answering any questions concerning purchasing, selling or chartering a yacht, please call **+1(954)274-4435**

# TABLE OF CONTENTS

TABLE OF CONTENTS	2
SPECIFICATIONS	5
Basic Information	5
Dimensions	5
Speed, Capacities and Weight	5
Accommodations	5
Hull and Deck Information	5
Engine Information	5
PHOTOS	6
Cockpit sunshade	6
Cockpit seating	6
Aft seating	6
Cushion over engine box	6
Cockpit table	6
Helm	6
Hours Sept 15 2022	7
Helm	7
Stidd helm chair	7
Helm storage	7
Companion seat	7
Electrical panel	7
Forward facing cockpit seating	8
015 - Pilothouse overhead	8
016 - Engine	8
Engine	8
Engine	8
JetStick control box	8
020 - Emergency hand pump	9

021 - Battery shutoffs	9
022 - V-berth	9
023 - V-berth	9
024 - Looking aft to galley	9
025 - V-berth	9
026 - Galley	10
027 - V-berth	10
028 - Head	10
029 - Head and door to cockpit	10
VacuFlush	10
Galley with steps up to cockpit	10
Step storage	11
033 - Cabin storage	11
Propane shutoff	11
Cool box	11
036- Cockpit storage	11
037 - Helm	11
038 - JetStick	12
039 - Pilothouse	12
040 - Helm	12
041 - Foredeck	12
Windlass	12
Trunk cabin	12
Teak hand rail	13
045 - Cabin top	13
Cockpit cover	13
047 - Bow view	13
Starboard bow	13
049 - Starboard profile	13

---

050 - Starboard stern	14
Transom	14
052 - Port stern	14
Port profile	14
054 - Port bow	14
CONTACTS	15
Contact details	15
Telephones	15
Office hours	15
Address	15

# SPECIFICATIONS

## Basic Information

Category: Boats	Model Year: 2001
Year Built: 2001	Country: United States

## Dimensions

LOA: 36' (10.97mm)	Beam: 10
Min Draft: 1' 6" (0.46mm)	Max Draft: 2' (0.61mm)

## Speed, Capacities and Weight

Max Speed: 27 Knots Kts. (31 MPH)	Water Capacity: 30 Gallons
Holding Tank: 25 Gal Gallons	Fuel Capacity: 160 Gal Gallons

## Accommodations

Total Cabins: 1
-----------------

## Hull and Deck Information

Hull Material: Composite Infused Vinylester	Hull Configuration: Modified V-Hull
Hull Designer: Hinckley	Exterior Designer: Hinckley

## Engine Information

Engines: 1	Manufacturer: Yanmar
Engine Type: Inboard	Fuel Type: Diesel



# PHOTOS

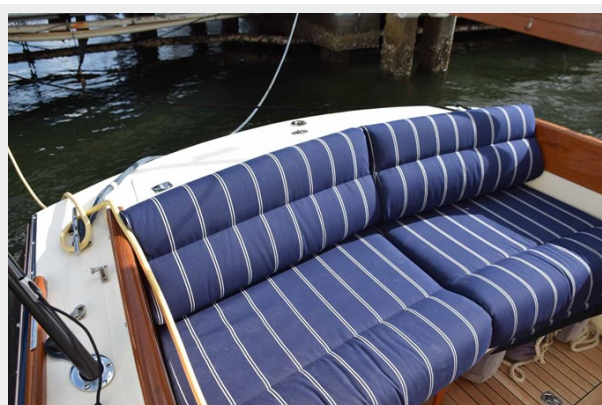
### Cockpit sunshade



### Cockpit seating



### Aft seating



### Cushion over engine box



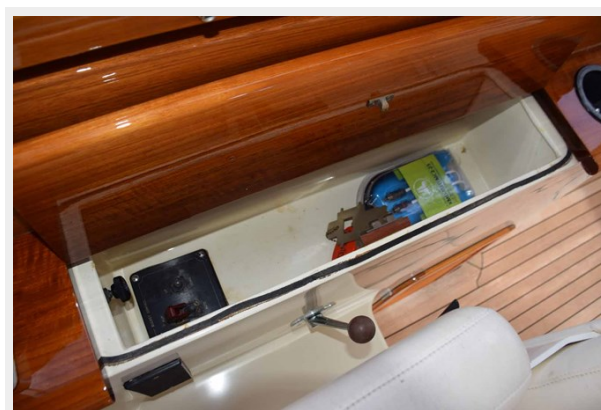
### Cockpit table



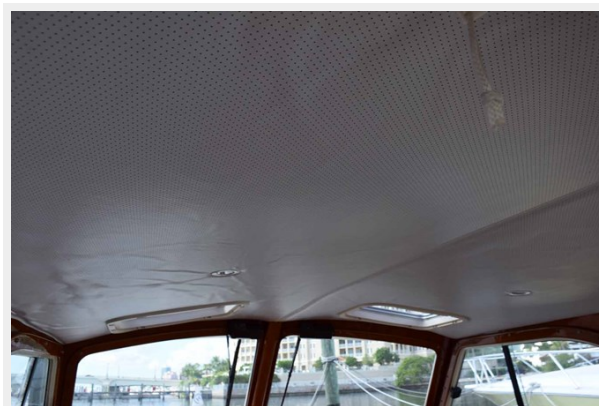
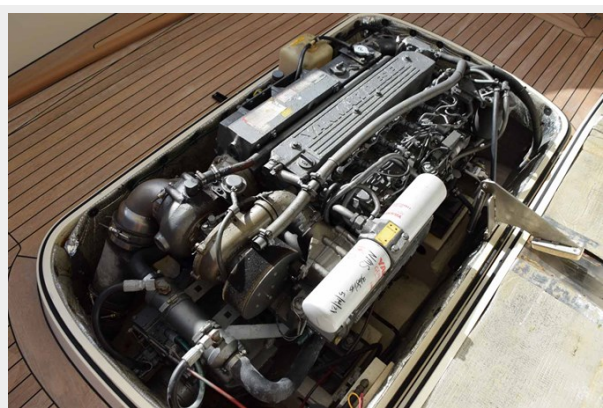
### Helm





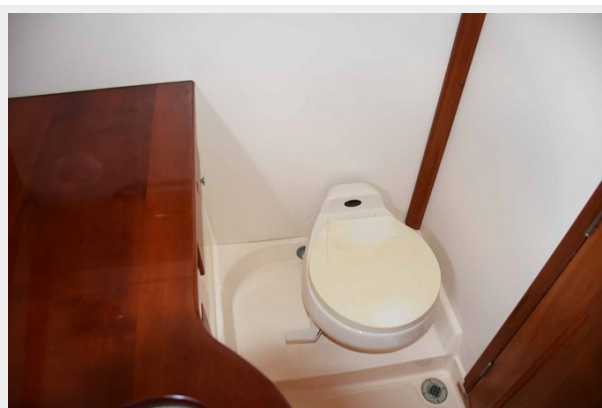
**Hours Sept 15 2022****Helm****Stidd helm chair****Helm storage****Companion seat****Electrical panel**



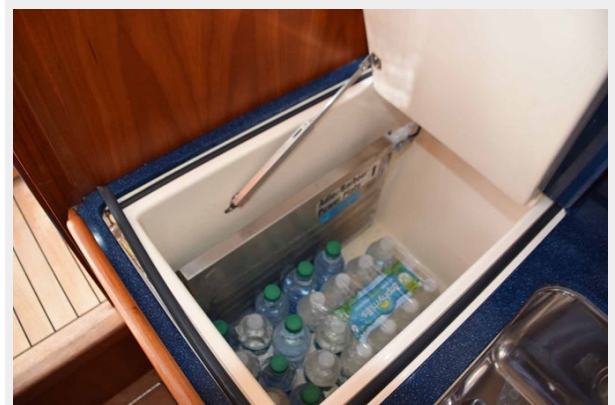
**Forward facing cockpit seating****015 - Pilothouse overhead****016 - Engine****Engine****Engine****JetStick control box**



**020 - Emergency hand pump****021 - Battery shutoffs****022 - V-berth****023 - V-berth****024 - Looking aft to galley****025 - V-berth**

**026 - Galley****027 - V-berth****028 - Head****029 - Head and door to cockpit****VacuFlush****Galley with steps up to cockpit**



**Step storage****033 - Cabin storage****Propane shutoff****Cool box****036- Cockpit storage****037 - Helm**



**038 - JetStick****039 - Pilothouse****040 - Helm****041 - Foredeck****Windlass****Trunk cabin**

**Teak hand rail****045 - Cabin top****Cockpit cover****047 - Bow view****Starboard bow****049 - Starboard profile**



**050 - Starboard stern****Transom****052 - Port stern****Port profile****054 - Port bow**



# CONTACTS

---

Andrey Shestakov, leading yacht broker of the sales department of Shestakov Yacht Sales Inc. Shestakov Yacht Sales Inc., the official representative of the Miami/Fort Lauderdale FL headquarters.

## Contact details

---

Email: **andrey@shestakovyachtsales.com**

Web: [shestakovyachtsales.com/en/](http://shestakovyachtsales.com/en/)

## Telephones

---

USA: **+1(954)274-4435**

## Office hours

---

Monday – Saturday: **9:00 - 21:00 EDT**

Sunday: **closed**

## Address

---



Harbour Towne Marina, 850 NE 3rd St,  
STE 213, Dania, FL 33004