

BLISS EASY — SANLORENZO



Builder: SANLORENZO

Year Built: 2009

Model: Motor Yacht

Price: PRICE ON APPLICATION

Location: China

LOA: 126' 4" (38.5mm)

Beam: 24.93

Min Draft: 9' 5" (2.85mm)

Cruise Speed: 22 Knots Kts. (25 MPH)

Max Speed: 26 Knots Kts. (30 MPH)

Our experienced yacht broker, Andrey Shestakov, will help you choose and buy a yacht that best suits your needs **BLISS EASY — SANLORENZO** from our catalogue. Presently, at Shestakov Yacht Sales Inc., we have a wide variety of yachts available on our sale's list. We also work in close contact with all the big yacht manufacturers from all over the world.

If you would like to buy a yacht **BLISS EASY — SANLORENZO** or would like help answering any questions concerning purchasing, selling or chartering a yacht, please call **+1(954)274-4435**

TABLE OF CONTENTS

TABLE OF CONTENTS	2
SPECIFICATIONS	4
Overview	4
Basic Information	4
Dimensions	4
Speed, Capacities and Weight	4
Accommodations	4
Hull and Deck Information	5
Engine Information	5
PHOTOS	6
BLISS EASY 2	6
BLISS EASY 1	6
BLISS EASY 3	6
BLISS EASY 4	6
BLISS EASY 5	6
BLISS EASY 6	6
BLISS EASY 7	7
BLISS EASY 8	7
BLISS EASY 9	7
BLISS EASY 10	7
BLISS EASY 11	7
BLISS EASY 12	7
BLISS EASY 13	7
BLISS EASY 14	7
BLISS EASY 15	8
BLISS EASY 16	8
BLISS EASY 17	8
BLISS EASY 18	8

BLISS EASY 19	8
CONTACTS	9
Contact details	9
Telephones	9
Office hours	9
Address	9

SPECIFICATIONS

Overview

With its Inventive styling and unexpected touches, the feeling on board this 40 meter is open and modern with no space wasted. Every detail has been carefully considered, giving more room for perfect social spaces as well as stylish privacy for both owners and guests.

Flooded with natural light, the interior is uncluttered and unfussy. Accented by simple lines, a calming place where a rich combination of contemporary design and luxurious textiles offer peaceful comfort. The striking metallic exterior of this all-aluminium yacht, gives BLISS EASY a cool industrial feel. A raw and grounded concept, yet refined with perfect detail and finish.

Basic Information

Category: Motor Yacht

Model Year: 2009

Year Built: 2009

Country: China

Dimensions

LOA: 126' 4" (38.5mm)

Beam: 24.93

Min Draft: 9' 5" (2.85mm)

Speed, Capacities and Weight

Cruise Speed: 22 Knots Kts. (25 MPH)

Cruise Speed Range: 1000

Max Speed: 26 Knots Kts. (30 MPH)

Gross Tonnage: 317 Pounds

Water Capacity: 6000 Gallons

Fuel Capacity: 7925.16 Gal Gallons

Accommodations

Total Cabins: 5

Hull and Deck Information

Hull Material: Aluminum

Deck Material: Teak

Exterior Designer: Francesco Paszkowsk

Interior Designer: Francesco Paszkowski

Engine Information

Engines: 1

Manufacturer: MTU

PHOTOS

BLISS EASY 1



BLISS EASY 2



BLISS EASY 3



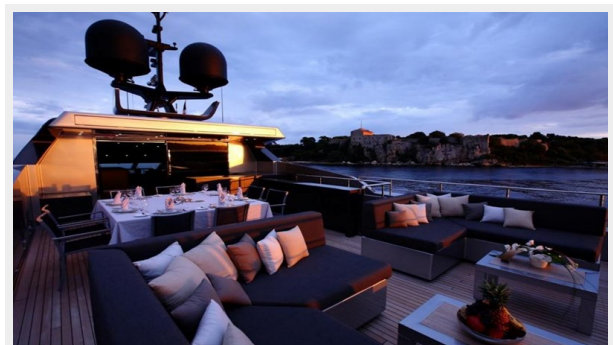
BLISS EASY 4



BLISS EASY 5



BLISS EASY 6



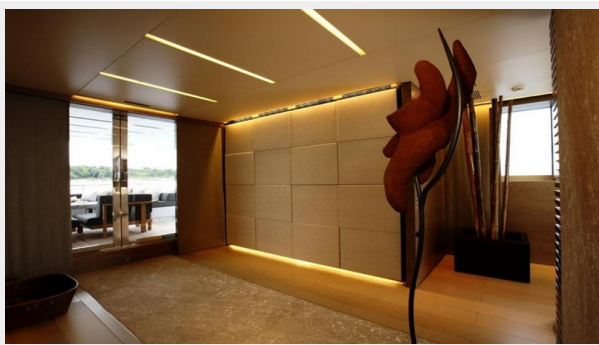
BLISS EASY 7



BLISS EASY 8



BLISS EASY 9



BLISS EASY 10



BLISS EASY 11



BLISS EASY 12



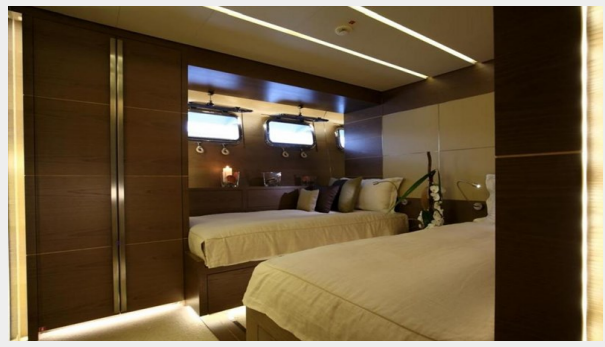
BLISS EASY 13



BLISS EASY 14



BLISS EASY 15



BLISS EASY 16



BLISS EASY 17



BLISS EASY 18



BLISS EASY 19



CONTACTS

Andrey Shestakov, leading yacht broker of the sales department of Shestakov Yacht Sales Inc. Shestakov Yacht Sales Inc., the official representative of the Miami/Fort Lauderdale FL headquarters.

Contact details

Email: andrey@shestakovyachtsales.com

Web: shestakovyachtsales.com/en/

Telephones

USA: +1(954)274-4435

Office hours

Monday – Saturday: **9:00 - 21:00** EDT

Sunday: **closed**

Address



Harbour Towne Marina, 850 NE 3rd St,
STE 213, Dania, FL 33004