

MAURA — REGAL



Builder: REGAL

Year Built: 2018

Model: Motor Yacht

Price: PRICE ON APPLICATION

Location: United States

LOA: 42' (12.8mm)

Beam: 13

Max Draft: 3' 5" (1.04mm)

Cruise Speed: 26.07 Knots Kts. (30 MPH)

Max Speed: 31.28 Knots Kts. (36 MPH)

Our experienced yacht broker, Andrey Shestakov, will help you choose and buy a yacht that best suits your needs **Maura — REGAL** from our catalogue. Presently, at Shestakov Yacht Sales Inc., we have a wide variety of yachts available on our sale's list. We also work in close contact with all the big yacht manufacturers from all over the world.

If you would like to buy a yacht **Maura — REGAL** or would like help answering any questions concerning purchasing, selling or chartering a yacht, please call **+1(954)274-4435**

TABLE OF CONTENTS

TABLE OF CONTENTS	2
SPECIFICATIONS	3
Overview	3
Basic Information	3
Dimensions	3
Speed, Capacities and Weight	3
Accommodations	4
Hull and Deck Information	4
Engine Information	4
PHOTOS	5
CONTACTS	12
Contact details	12
Telephones	12
Office hours	12
Address	12

SPECIFICATIONS

Overview

Low Hours! Slip available in Miami!

Easy to see, located in Miami Beach, FL! The seller has kept "Maura" in great condition, well maintained, and offers all the features. This two-stateroom vessel can be enjoyable in a climate-controlled environment also, her retractable sunroof, compactable aft sliding doors becoming one with the water is a breeze! Powered with Volvo IPS 500's only 320 hours, freshly serviced pods, main engines, and generator. Operation of this vessel could not be easier while handling with joystick feature. Beautifully placed accent lighting with dimming capabilities throughout the interior, creating a great ambiance, grilling on the aft deck while the TV plays soft music. Reach out today to get a unplug and play pleasure cruiser!

Basic Information

Category: Motor Yacht

Model Year: 2018

Year Built: 2018

Country: United States

Dimensions

LOA: 42' (12.8mm)

Beam: 13

Max Draft: 3' 5" (1.04mm)

Speed, Capacities and Weight

Cruise Speed: 26.07 Knots Kts. (30 MPH)

Max Speed: 31.28 Knots Kts. (36 MPH)

Water Capacity: 73 Gallons

Holding Tank: 34 Gal Gallons

Fuel Capacity: 258 Gal Gallons

Accommodations

Total Cabins: 2

Total Heads: 2

Hull and Deck Information

Hull Material: Fiberglass

Engine Information

Engines: 2

Manufacturer: Volvo

Engine Type: Inboard

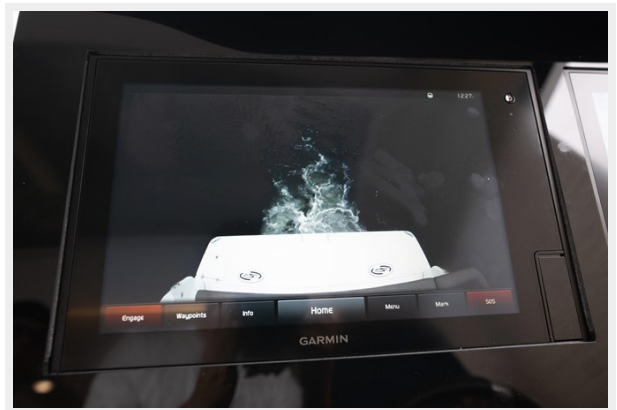
Fuel Type: Diesel

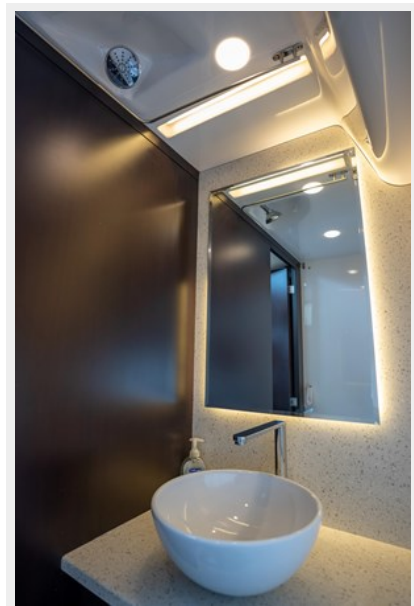
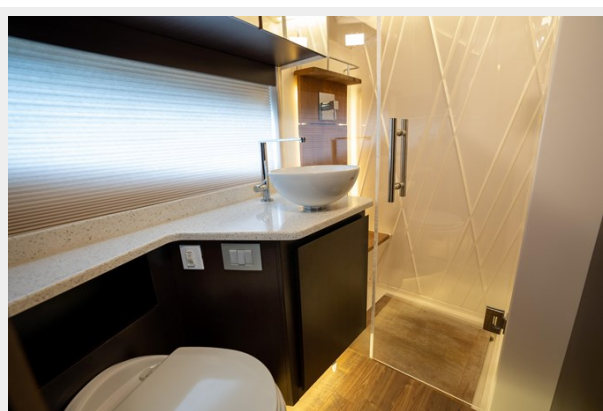
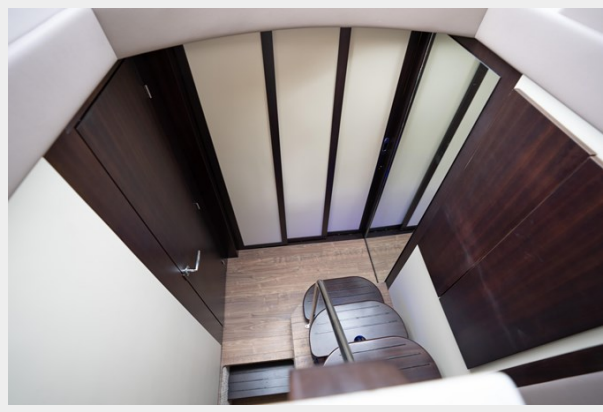
PHOTOS















CONTACTS

Andrey Shestakov, leading yacht broker of the sales department of Shestakov Yacht Sales Inc. Shestakov Yacht Sales Inc., the official representative of the Miami/Fort Lauderdale FL headquarters.

Contact details

Email: andrey@shestakovyachtsales.com

Web: shestakovyachtsales.com/en/

Telephones

USA: +1(954)274-4435

Office hours

Monday – Saturday: **9:00 - 21:00** EDT

Sunday: **closed**

Address



Harbour Towne Marina, 850 NE 3rd St,
STE 213, Dania, FL 33004