

KNOT FOR SAIL — MARINE TRADER



Builder: MARINE TRADER

LOA: 40' (12.19m)

Year Built: 1982

Beam: 13.33

Model: trawler

Max Draft: 3' 6" (1.07m)

Price: PRICE ON APPLICATION

Location: United States

Our experienced yacht broker, Andrey Shestakov, will help you choose and buy a yacht that best suits your needs **Knot For Sail — MARINE TRADER** from our catalogue. Presently, at Shestakov Yacht Sales Inc., we have a wide variety of yachts available on our sale's list. We also work in close contact with all the big yacht manufacturers from all over the world.

If you would like to buy a yacht **Knot For Sail — MARINE TRADER** or would like help answering any questions concerning purchasing, selling or chartering a yacht, please call **+1(954)274-4435**

TABLE OF CONTENTS

TABLE OF CONTENTS	2
SPECIFICATIONS	4
Overview	4
Basic Information	5
Dimensions	5
Speed, Capacities and Weight	5
Accommodations	5
Hull and Deck Information	5
Engine Information	5
PHOTOS	6
0_2790208_	6
1_2790208_	6
2_2790208_	6
3_2790208_	6
4_2790208_	7
5_2790208_	7
7_2790208_	7
6_2790208_	7
8_2790208_	7
9_2790208_	7
10_2790208_	8
11_2790208_	8
12_2790208_	8
13_2790208_	8
14_2790208_	8
15_2790208_	8
16_2790208_	9
17_2790208_	9

18_2790208_	9
19_2790208_	9
20_2790208_	10
21_2790208_	10
CONTACTS	11
Contact details	11
Telephones	11
Office hours	11
Address	11

SPECIFICATIONS

Overview

While Knot for Sale has an “ETY” hull identification number same as a Marine Trader and is labeled as so. It’s a 40’ Ocean Marine Trawler made by Alexander Chueh. He was just out of the Army and had very little money when he started building boats. He understood that to build boats required a mold and buying a new or making one, was too expensive. So, he bought a used mold from Marine Trader and that is why all of Alexander Chueh’s earlier boats share the Marine Trader “ETV” HIN numbers.

Alexander Cheuh knew that on-top of making a better-quality boat, he needed to make changes in order for his yachts would not be confused with Marine Traders. He made the following modifications:

1. Ocean Marine windows have a rounded corner trim on all windows, inside and out. Where Marine Trader windows are rectangular and not rounded.
2. Ocean Marine Ed Monk style lap straks are more deeply grooved compared to Marine Trader.
3. Ocean Marine have thicker 3"x2" oval teak handrails, Marine Traders do not.
4. Ocean Marine has large Ed Monk style hawsers, Marine Trader’s hawsers opening are reduced in size around the decks.
5. Both the wooden splash and bumper guards are smaller on the Marine Trader.
6. The hull on an Ocean Marine yacht is solid hand-laid fiberglass, with no wood in between layers.
7. The interior woodwork craftsmanship inside an Ocean Marine are far superior to a Marine Trader.

Later, Alexander Chueh opened another company called Alexander Marine and is when he started building the Ocean Alexander. His son, John Chueh, is running Alexander Marine today.

Knot for Sail has only had Two Owners and the same owner for the last 28 years. This beautiful 40’ Double Cabin has been well taken care of and is ready to take new owners on their next adventures!!

A popular model, the 40 Double Cabin was introduced in 1980 when fuel-efficient trawlers were extremely popular in the U.S. market. One of the better-quality imports of her era, she rides on a solid fiberglass, semi-displacement hull with hard chines, moderate beam, and a long keel for improved directional stability. The standard two-stateroom floorplan of the Ocean 40 is arranged with the galley to starboard in the salon and a walkaround queen bed in the aft cabin. A lower

helm was standard, and port and starboard doors in the salon provide convenient deck access.

Basic Information

Category: trawler

Model Year: 1982

Year Built: 1982

Country: United States

Dimensions

LOA: 40' (12.19mm)

LWL: 36' (10.97mm)

Beam: 13.33

Max Draft: 3' 6" (1.07mm)

Speed, Capacities and Weight

Water Capacity: 200 Gallons

Fuel Capacity: 400 Gal Gallons

Accommodations

Total Cabins: 3

Total Heads: 2

Hull and Deck Information

Hull Material: Fiberglass

Engine Information

Engines: 1

Manufacturer: Ford Lehman

Engine Type: Inboard

Fuel Type: Diesel

PHOTOS

0_2790208_



1_2790208_



2_2790208_



3_2790208_



4_2790208_



5_2790208_



7_2790208_



6_2790208_



8_2790208_



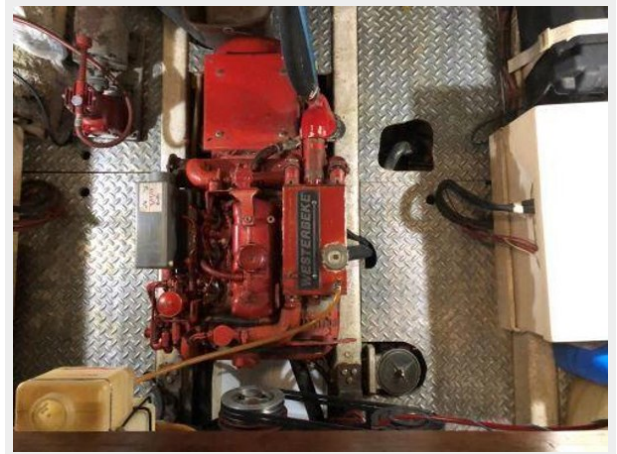
9_2790208_



10_2790208_



11_2790208_



12_2790208_



13_2790208_



14_2790208_



15_2790208_



16_2790208_



17_2790208_



18_2790208_



19_2790208_



20_2790208_



21_2790208_



CONTACTS

Andrey Shestakov, leading yacht broker of the sales department of Shestakov Yacht Sales Inc. Shestakov Yacht Sales Inc., the official representative of the Miami/Fort Lauderdale FL headquarters.

Contact details

Email: andrey@shestakovyachtsales.com

Web: shestakovyachtsales.com/en/

Telephones

USA: +1(954)274-4435

Office hours

Monday – Saturday: **9:00 - 21:00** EDT

Sunday: **closed**

Address



Harbour Towne Marina, 850 NE 3rd St,
STE 213, Dania, FL 33004