

REMARKABLE — SEA RAY



Builder: [SEA RAY](#)

Year Built: 2013

Model: Cruising Yacht

Price: **PRICE ON APPLICATION**

LOA: 54' (16.46mm)

Beam: 15.25

Max Draft: 4' 1" (1.24mm)

Our experienced yacht broker, Andrey Shestakov, will help you choose and buy a yacht that best suits your needs **REMARKABLE — SEA RAY** from **our catalogue**. Presently, at **Shestakov Yacht Sales Inc.**, we have a wide variety of yachts available on **our sale's list**. We also work in close contact with all the big **yacht manufacturers** from all over the world.

If you would like to buy a yacht **REMARKABLE — SEA RAY** or would like help answering any questions concerning purchasing, selling or chartering a yacht, please call **+1(954)274-4435**

TABLE OF CONTENTS

TABLE OF CONTENTS	2
SPECIFICATIONS	5
Basic Information	5
Dimensions	5
Speed, Capacities and Weight	5
Accommodations	5
Hull and Deck Information	5
Engine Information	6
PHOTOS	7
Port profile	7
Port bow profile	7
Bow profile	7
Port quarter profile	7
Stern profile	7
Aerial view	7
Cockpit	8
Galley/Salon area	8
Stbd profile 2	8
Guest stateroom	8
Swim platform	8
Transom sunpad	8
Extended sunpad	9
Cockpit looking aft	9
Cockpit settee	9
Cockpit wet bar	9
Cockpit grill	9
Helm companion lounge	9
Helm	10

Helm chairs	10
Port profile 2	10
Helm dashboard	10
Salon	10
Steps to the salon	10
Salon skylight	11
Galley	11
TV in the master stateroom with large mirror	11
Master stateroom	11
Master head/shower	11
Master vanity sink	11
Storage in the master head	12
Guest stateroom view 2	12
TV and storage in the guest stateroom	12
Storage area in the guest stateroom	12
Guest head/shower	13
Stern profile 2	13
Engine room	13
Engine room view 2	13
Engine room view 3	13
Engine room view 4	13
Main DC breaker panel	14
Generator	14
Stbd profile 3	14
Cockpit enclosure	14
Aft extension sunbrella	14
Windshield cover	14
Bow sunpads	15
Side deck	15

Stbd profile 4	15
Helm side window	15
Windshield	15
SmartCraft VesselView	15
Transom	16
Stbd profile 5	16
Stbd profile 6	16
Transom sunpad view 2	16
Thruster control	16
Helm switch panel	16
Stbd profile 7	17
Cuisinart convection microwave oven	17
540 Sundancer underway	17
Bose speakers	17
CONTACTS	18
Contact details	18
Telephones	18
Office hours	18
Address	18

SPECIFICATIONS

Basic Information

Category: Cruising Yacht

Sub Category: Express

Model Year: 2013

Year Built: 2013

Dimensions

LOA: 54' (16.46mm)

Beam: 15.25

Max Draft: 4' 1" (1.24mm)

Speed, Capacities and Weight

Water Capacity: 150 Gallons

Holding Tank: 68 Gal Gallons

Fuel Capacity: 600 Gal Gallons

Accommodations

Total Cabins: 2

Total Berths: 3

Sleeps: 6

Total Heads: 2

Hull and Deck Information

Hull Material: Fiberglass

Hull Configuration: Semi-Displacement

Hull Color: White

Engine Information

Engines: 2

Manufacturer: Cummins

Engine Type: Inboard

Fuel Type: Diesel

PHOTOS

Port profile



Port bow profile



Bow profile



Port quarter profile



Stern profile



Aerial view



Cockpit



Galley/Salon area



Guest stateroom



Stbd profile 2



Swim platform



Transom sunpad



Extended sunpad



Cockpit looking aft



Cockpit settee



Cockpit wet bar



Cockpit grill



Helm companion lounge



Helm



Helm chairs



Helm dashboard



Port profile 2



Steps to the salon



Salon



Salon skylight



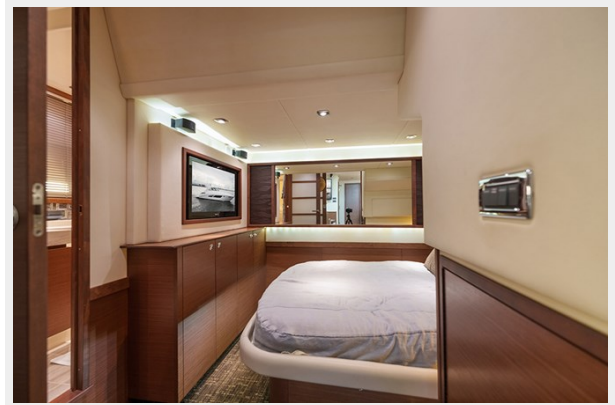
Galley



Master stateroom



TV in the master stateroom with large mirror



Master head/shower



Master vanity sink



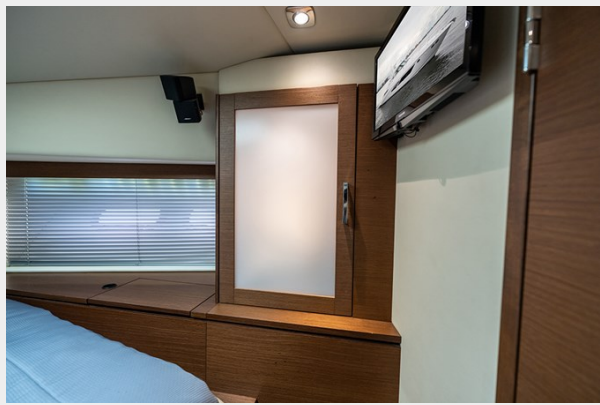
Storage in the master head



Guest stateroom view 2



TV and storage in the guest stateroom



Storage area in the guest stateroom



Guest head/shower



Stern profile 2



Engine room



Engine room view 2



Engine room view 3



Engine room view 4



Main DC breaker panel



Generator



Stbd profile 3



Cockpit enclosure



Aft extension sunbrella



Windshield cover



Bow sunpads



Side deck



Stbd profile 4



Helm side window



Windshield



SmartCraft VesseView



Stbd profile 5



Transom



Transom sunpad view 2



Stbd profile 6



Thruster control



Helm switch panel



Stbd profile 7



Cuisinart convection microwave oven



Bose speakers



540 Sundancer underway



CONTACTS

Andrey Shestakov, leading yacht broker of the sales department of Shestakov Yacht Sales Inc. Shestakov Yacht Sales Inc., the official representative of the Miami/Fort Lauderdale FL headquarters.

Contact details

Email: **andrey@shestakovyachtsales.com**

Web: shestakovyachtsales.com/en/

Telephones

USA: **+1(954)274-4435**

Office hours

Monday – Saturday: **9:00 - 21:00** EDT

Sunday: **closed**

Address



Harbour Towne Marina, 850 NE 3rd St, STE 213, Dania, FL 33004