

LONG'S ISLAND — SEA RAY



Builder: SEA RAY

Year Built: 1991

Model: cruiser

Price: PRICE ON APPLICATION

Location: United States

LOA: 50' 8" (15.44mm)

Beam: 15

Max Draft: 4' (1.22mm)

Cruise Speed: 20 Knots Kts. (23 MPH)

Max Speed: 26 Knots Kts. (30 MPH)

Our experienced yacht broker, Andrey Shestakov, will help you choose and buy a yacht that best suits your needs **Long's Island — SEA RAY** from our catalogue. Presently, at Shestakov Yacht Sales Inc., we have a wide variety of yachts available on our sale's list. We also work in close contact with all the big yacht manufacturers from all over the world.

If you would like to buy a yacht **Long's Island — SEA RAY** or would like help answering any questions concerning purchasing, selling or chartering a yacht, please call **+1(954)274-4435**

TABLE OF CONTENTS

TABLE OF CONTENTS	2
SPECIFICATIONS	5
Overview	5
Basic Information	5
Dimensions	5
Speed, Capacities and Weight	5
Accommodations	5
Hull and Deck Information	6
Engine Information	6
PHOTOS	7
DSC04197	7
DSC04198	7
DSC04240	7
DSC04204	7
DSC04203	8
DSC04233	8
DSC04205	8
DSC04202	8
DSC04201	8
DSC04199	8
DSC04200	9
DSC04206	9
DSC04207	9
DSC04209	9
DSC04208	9
DSC04210	9
DSC04211	10
DSC04212	10

DSC04213	10
DSC04232	10
DSC04230	10
DSC04214	10
DSC04215	11
DSC04216	11
DSC04217	11
DSC04218	11
DSC04219	11
DSC04220	11
DSC04221	12
DSC04222	12
DSC04223	12
DSC04224	12
DSC04225	12
DSC04226	12
DSC04227	13
DSC04228	13
DSC04229	13
DSC04231	13
DSC04234	13
DSC04235	13
DSC04236	14
DSC04237	14
DSC04238	14
DSC04239	14
CONTACTS	15
Contact details	15
Telephones	15

Office hours	15
Address	15

SPECIFICATIONS

Overview

Updated inside and out this 480 Sundancer is truly one of one. Her inviting two cabin / two head layout offers a massive salon with equally large galley. This 480 has been updated throughout including just having a new Bow Thruster installed. This boat is definitely a must see.

Basic Information

Category: cruiser

Sub Category: Express

Model Year: 1991

Year Built: 1991

Country: United States

Dimensions

LOA: 50' 8" (15.44mm)

Beam: 15

Max Draft: 4' (1.22mm)

Speed, Capacities and Weight

Cruise Speed: 20 Knots Kts. (23 MPH)

Max Speed: 26 Knots Kts. (30 MPH)

Water Capacity: 150 Gallons

Holding Tank: 68 Gal Gallons

Fuel Capacity: 500 Gal Gallons

Accommodations

Total Cabins: 2

Total Heads: 2

Hull and Deck Information

Hull Material: Fiberglass

Engine Information

Engines: 2

Manufacturer: Detroit Diesel

Engine Type: Inboard

Fuel Type: Diesel

PHOTOS

DSC04197



DSC04198



DSC04240



DSC04204



DSC04203



DSC04233



DSC04205



DSC04202



DSC04201



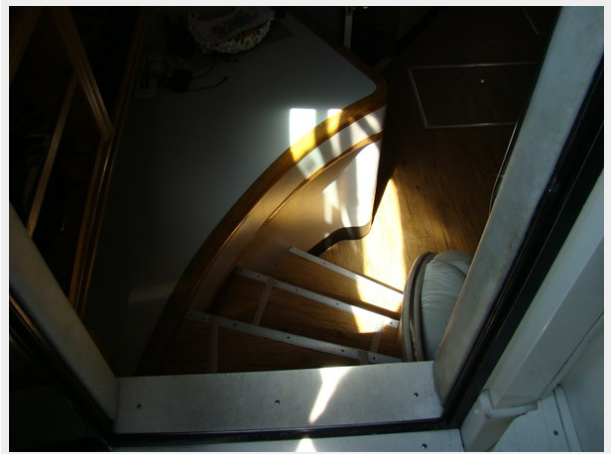
DSC04199



DSC04200



DSC04206



DSC04207



DSC04209



DSC04208



DSC04210



DSC04211



DSC04212



DSC04213



DSC04232



DSC04230



DSC04214



DSC04215



DSC04216



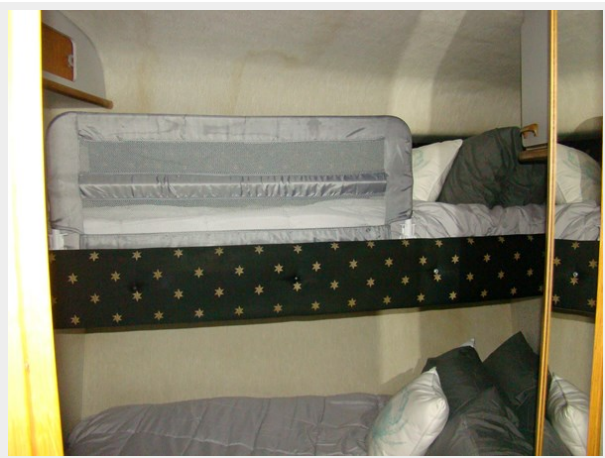
DSC04217



DSC04218



DSC04219



DSC04220



DSC04221



DSC04222



DSC04223



DSC04224



DSC04225



DSC04226



DSC04227



DSC04228



DSC04229



DSC04231



DSC04234



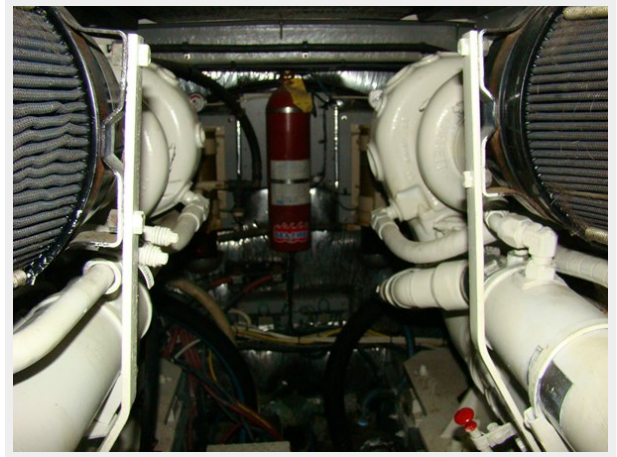
DSC04235



DSC04236



DSC04237



DSC04238



DSC04239



CONTACTS

Andrey Shestakov, leading yacht broker of the sales department of Shestakov Yacht Sales Inc. Shestakov Yacht Sales Inc., the official representative of the Miami/Fort Lauderdale FL headquarters.

Contact details

Email: andrey@shestakovyachtsales.com

Web: shestakovyachtsales.com/en/

Telephones

USA: +1(954)274-4435

Office hours

Monday – Saturday: **9:00 - 21:00** EDT

Sunday: **closed**

Address



Harbour Towne Marina, 850 NE 3rd St,
STE 213, Dania, FL 33004