

## BLUE MOON — SEA RANGER



**Builder:** SEA RANGER

**Year Built:** 1981

**Model:** Trawler Yacht

**Price:** PRICE ON APPLICATION

**Location:** United States

**LOA:** 45' (13.72mm)

**Beam:** 14.75

**Min Draft:** 4' 2" (1.27mm)

**Max Draft:** 4' 3" (1.3mm)

**Cruise Speed:** 8 Knots Kts. (9 MPH)

**Max Speed:** 11 Knots Kts. (13 MPH)

Our experienced yacht broker, Andrey Shestakov, will help you choose and buy a yacht that best suits your needs **BLUE MOON — SEA RANGER** from our catalogue. Presently, at Shestakov Yacht Sales Inc., we have a wide variety of yachts available on our sale's list. We also work in close contact with all the big yacht manufacturers from all over the world.

If you would like to buy a yacht **BLUE MOON — SEA RANGER** or would like help answering any questions concerning purchasing, selling or chartering a yacht, please call **+1(954)274-4435**

# TABLE OF CONTENTS

TABLE OF CONTENTS	2
SPECIFICATIONS	6
Overview	6
Basic Information	6
Dimensions	6
Speed, Capacities and Weight	6
Accommodations	7
Hull and Deck Information	7
Engine Information	7
PHOTOS	8
1_2793302_	8
2_2793302_	8
3_2793302_	8
4_2793302_	8
5_2793302_	8
6_2793302_	8
7_2793302_	9
8_2793302_	9
9_2793302_	9
10_2793302_	9
11_2793302_	9
12_2793302_	9
13_2793302_	10
14_2793302_	10
15_2793302_	10
16_2793302_	10
17_2793302_	10
18_2793302_	10

---

19_2793302_	11
20_2793302_	11
21_2793302_	11
22_2793302_	11
23_2793302_	11
24_2793302_	11
25_2793302_	12
26_2793302_	12
27_2793302_	12
28_2793302_	12
29_2793302_	12
30_2793302_	12
31_2793302_	13
32_2793302_	13
33_2793302_	13
34_2793302_	13
35_2793302_	13
36_2793302_	13
37_2793302_	14
38_2793302_	14
39_2793302_	14
40_2793302_	14
41_2793302_	14
42_2793302_	14
43_2793302_	15
44_2793302_	15
45_2793302_	15
46_2793302_	15
47_2793302_	15

---

---

48_2793302_	15
49_2793302_	16
50_2793302_	16
51_2793302_	16
52_2793302_	16
53_2793302_	16
54_2793302_	16
55_2793302_	17
56_2793302_	17
57_2793302_	17
58_2793302_	17
59_2793302_	17
60_2793302_	17
61_2793302_	18
62_2793302_	18
63_2793302_	18
64_2793302_	18
65_2793302_	18
66_2793302_	18
67_2793302_	19
68_2793302_	19
69_2793302_	19
70_2793302_	19
71_2793302_	19
72_2793302_	19
73_2793302_	20
74_2793302_	20
75_2793302_	20
76_2793302_	20

---

77_2793302_	20
CONTACTS	21
Contact details	21
Telephones	21
Office hours	21
Address	21

---

# SPECIFICATIONS

---

## Overview

---

BLUE MOON is a 1981 45' Sea Ranger built by C & L Marine in Kaohsiung, Taiwan.

Blue Moon offers a Volvo TAMD-40 165 Hp main engine, Borg Warner Velvet Drive reverse reduction gear.

8kW Westerbeke diesel generator, ProMariner 1220 20 amp charger, Xantrex TC 20 Truecharge 10 TB, Lowrance LCX-28 c HD, Furuno Radar, Lowrance Link 8, WESMAR Thruster, AIS, rigid bottom dinghy with outboard, cockpit for easy docking and locking, both the master and guest staterooms have larger size berths. Larger comfortably sized head makes this model special along with it's layout.

This Pilothouse trawler has new fuel tanks, new shaft, 2 wheels recently balanced, windless rebuilt, new fresh water pump in the main engine & new engine circulation pump, both heat exchangers in both engines have been serviced in 2021, new bottom 2021.

## Basic Information

---

**Category:** Trawler Yacht

**Model Year:** 1981

**Year Built:** 1981

**Country:** United States

## Dimensions

---

**LOA:** 45' (13.72mm)

**LWL:** 39' 8" (12.09mm)

**Beam:** 14.75

**Min Draft:** 4' 2" (1.27mm)

**Max Draft:** 4' 3" (1.3mm)

## Speed, Capacities and Weight

---

**Cruise Speed:** 8 Knots Kts. (9 MPH)

**Max Speed:** 11 Knots Kts. (13 MPH)

**Water Capacity:** 200 Gallons

**Holding Tank:** 30 Gal Gallons

**Fuel Capacity:** 612 Gal Gallons

---

## Accommodations

---

**Total Cabins:** 2

**Total Heads:** 1

---

## Hull and Deck Information

---

**Hull Material:** Fiberglass

---

## Engine Information

---

**Engines:** 1

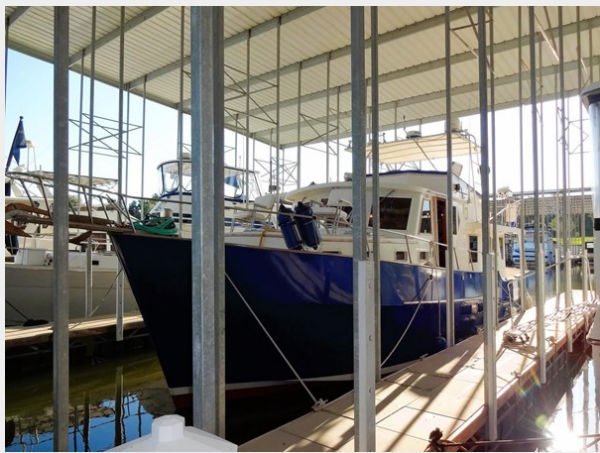
**Manufacturer:** Volvo

**Engine Type:** Inboard

**Fuel Type:** Diesel

# PHOTOS

1\_2793302\_



2\_2793302\_



3\_2793302\_



4\_2793302\_



5\_2793302\_



6\_2793302\_

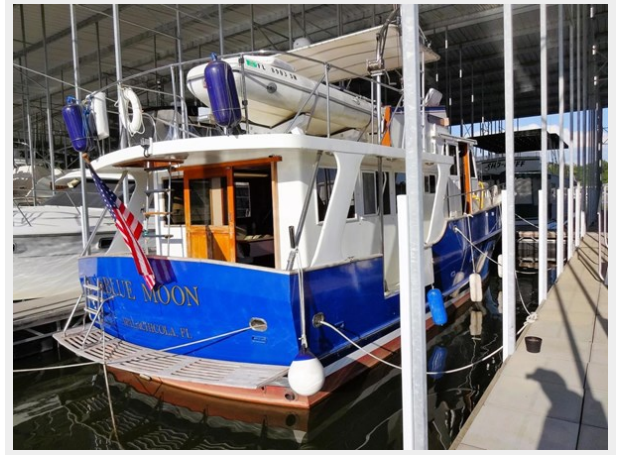




7\_2793302\_



8\_2793302\_



9\_2793302\_



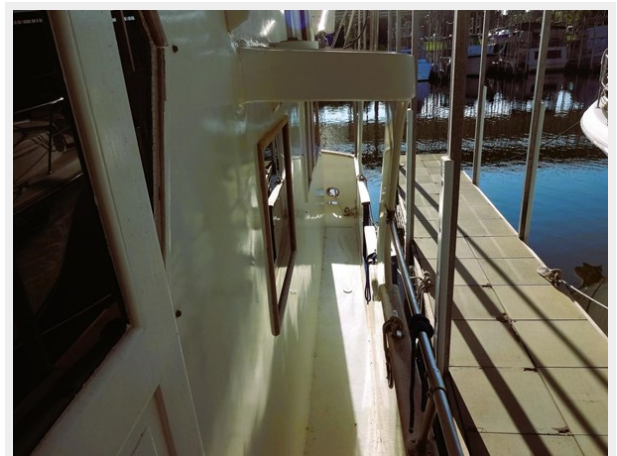
10\_2793302\_



11\_2793302\_



12\_2793302\_



13\_2793302\_



14\_2793302\_



15\_2793302\_



16\_2793302\_



17\_2793302\_



18\_2793302\_



19\_2793302\_



20\_2793302\_



21\_2793302\_



22\_2793302\_



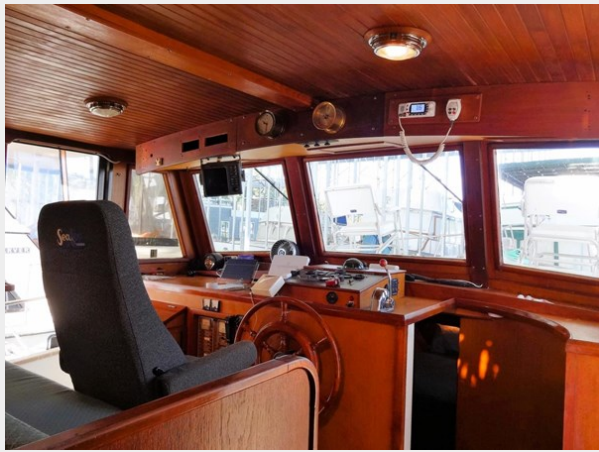
23\_2793302\_



24\_2793302\_



25\_2793302\_



26\_2793302\_



27\_2793302\_



28\_2793302\_



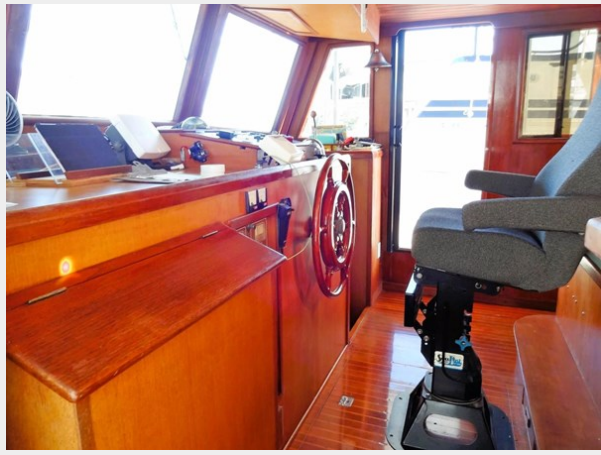
29\_2793302\_



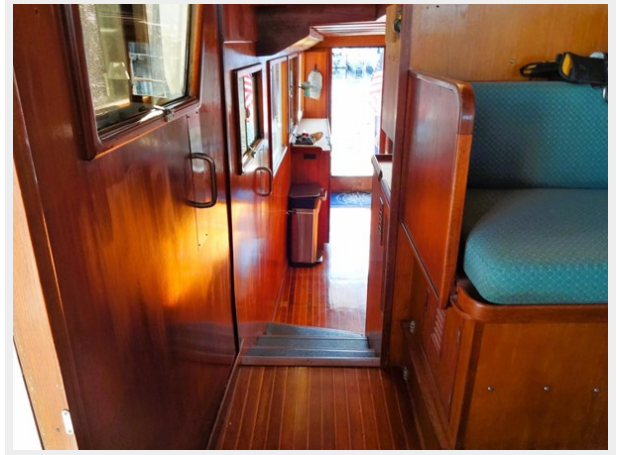
30\_2793302\_



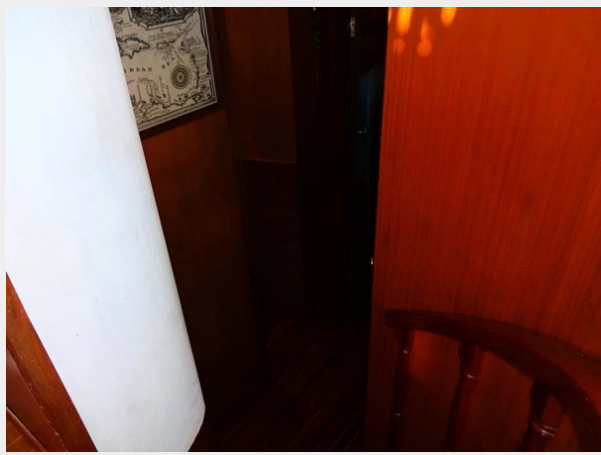
31\_2793302\_



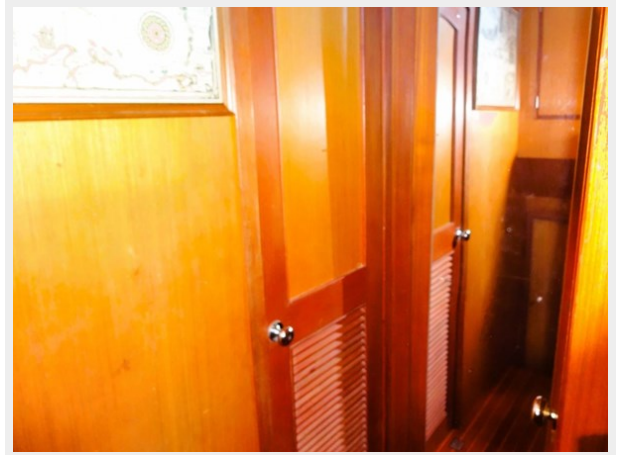
32\_2793302\_



33\_2793302\_



34\_2793302\_



35\_2793302\_



36\_2793302\_



37\_2793302\_



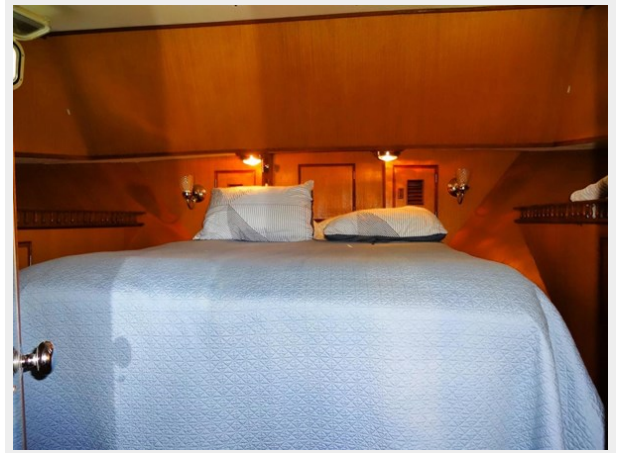
38\_2793302\_



39\_2793302\_



40\_2793302\_



41\_2793302\_



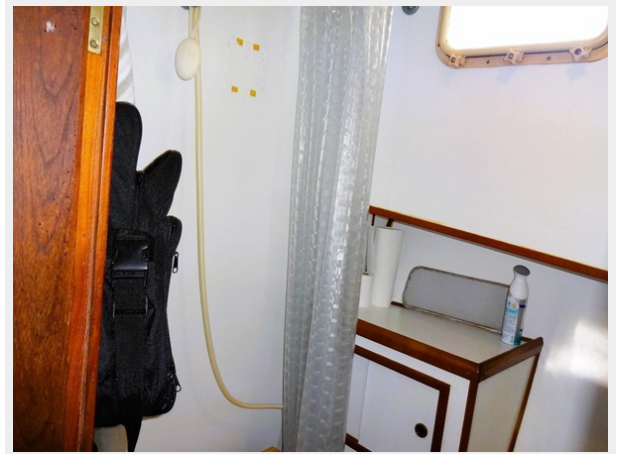
42\_2793302\_



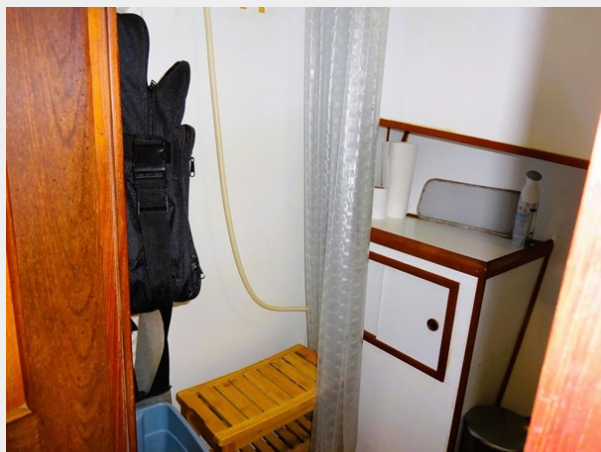
43\_2793302\_



44\_2793302\_



45\_2793302\_



46\_2793302\_



47\_2793302\_



48\_2793302\_



49\_2793302\_



50\_2793302\_



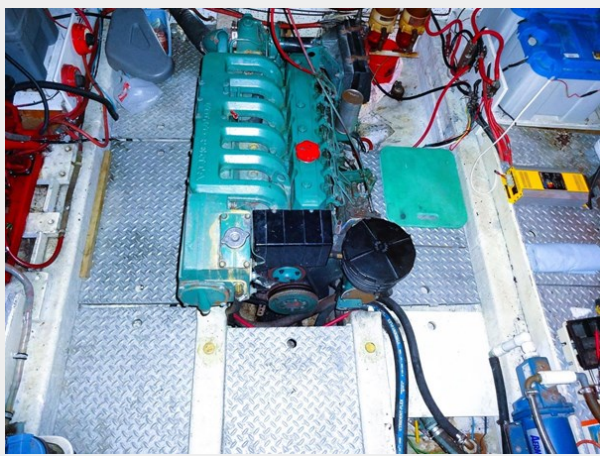
51\_2793302\_



52\_2793302\_



53\_2793302\_



54\_2793302\_





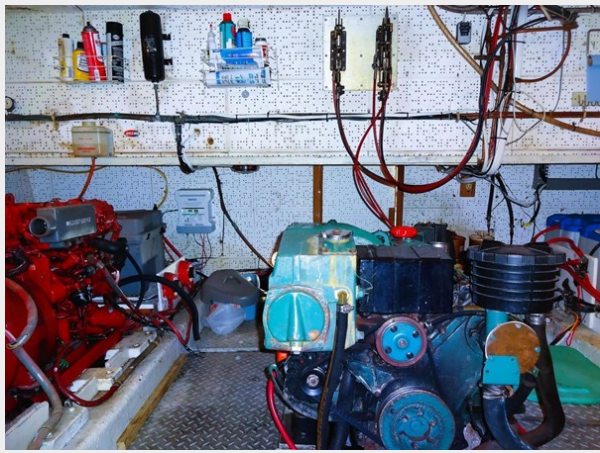
55\_2793302\_



56\_2793302\_



57\_2793302\_



58\_2793302\_



59\_2793302\_



60\_2793302\_



61\_2793302\_



62\_2793302\_



63\_2793302\_



64\_2793302\_



65\_2793302\_



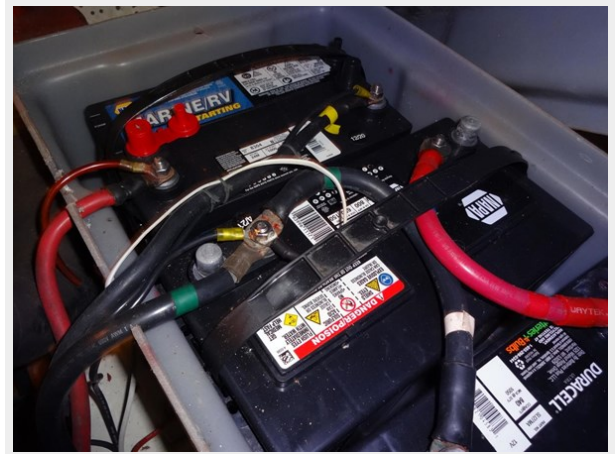
66\_2793302\_



67\_2793302\_



68\_2793302\_



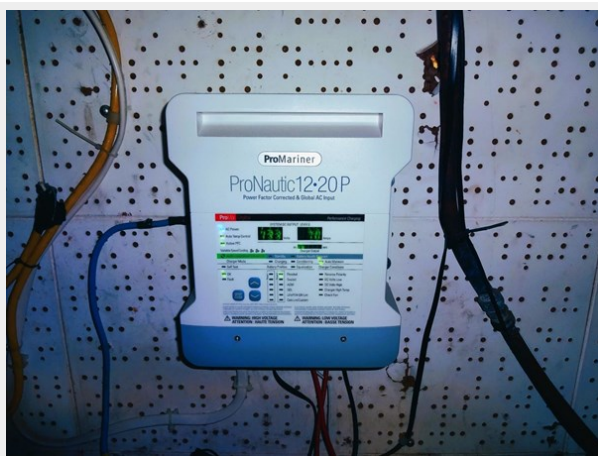
69\_2793302\_



70\_2793302\_



71\_2793302\_



72\_2793302\_



73\_2793302\_



74\_2793302\_



75\_2793302\_



76\_2793302\_



77\_2793302\_



# CONTACTS

---

Andrey Shestakov, leading yacht broker of the sales department of Shestakov Yacht Sales Inc. Shestakov Yacht Sales Inc., the official representative of the Miami/Fort Lauderdale FL headquarters.

## Contact details

---

Email: [andrey@shestakovyachtsales.com](mailto:andrey@shestakovyachtsales.com)

Web: [shestakovyachtsales.com/en/](http://shestakovyachtsales.com/en/)

## Telephones

---

USA: +1(954)274-4435

## Office hours

---

Monday – Saturday: **9:00 - 21:00** EDT

Sunday: **closed**

## Address

---



Harbour Towne Marina, 850 NE 3rd St,  
STE 213, Dania, FL 33004